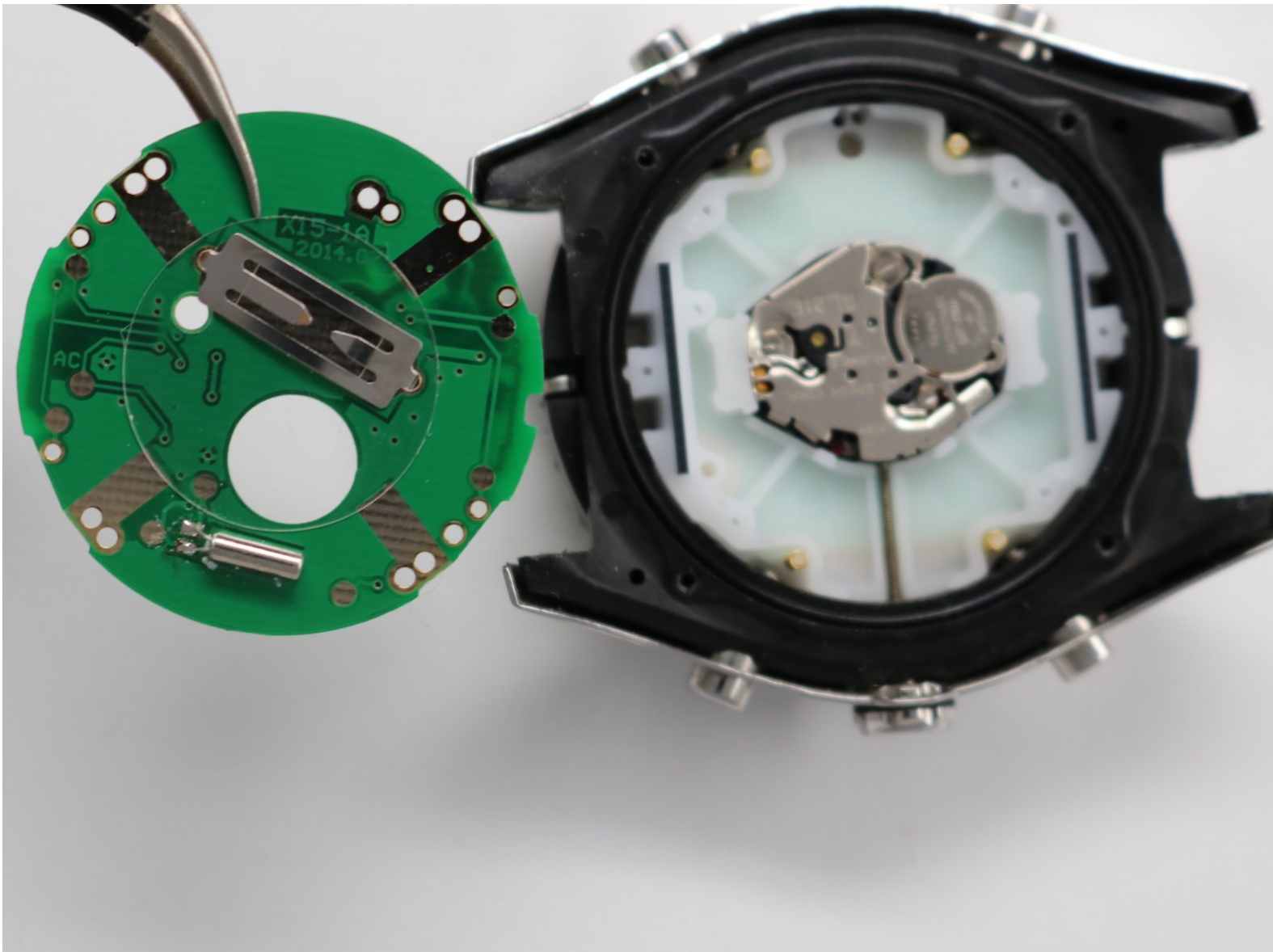




Quiksilver The Fifty50 Circuit Board Replacement

Use this guide to remove the circuit board in your Quiksilver The Fifty50 watch.

Written By: Sue Giske



INTRODUCTION

This replacement guide will teach someone how to successfully remove the circuit board from their Quiksilver The Fifty50 sports watch. Before getting started make sure to grab the tools necessary and at least skim the instructions once to understand what it will look like while you are removing the circuit board, that way there will be no surprises as you go through the steps.



TOOLS:

- [Phillips #00 Screwdriver](#) (1)
- [Tweezers](#) (1)
- [Magnetic Telescoping Pick-Up Tool](#) (1)

Step 1 — Strap



- Place the watch (face down) on a solid surface.
 - Carefully use the screwdriver and push in one side of the strap.
 - Slowly remove the strap by pushing back one of the hidden metallic holders for the strap.
- i** If you are having difficulty trying to take off the strap, feel free to use a 3.5 flat head screw driver, or any kind of tool that make this step easier.

Step 2



- Gently pull the pin out of the strap.

i Carefully handle the small metallic holder, as they are sharp and may be hard to find if fall out.

Step 3 — Back Panel



- Remove the four 1.1 mm screws holding the back panel in place using the Phillips #00 screwdriver.

Step 4



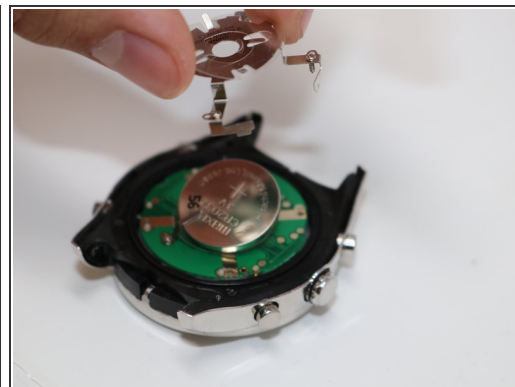
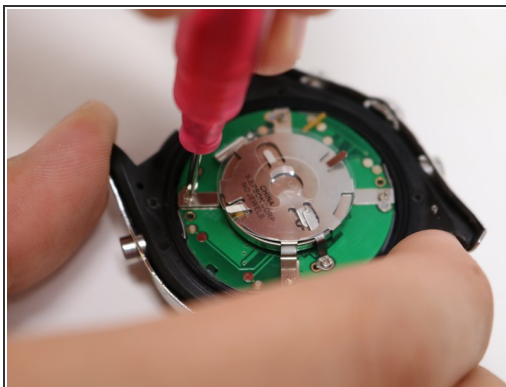
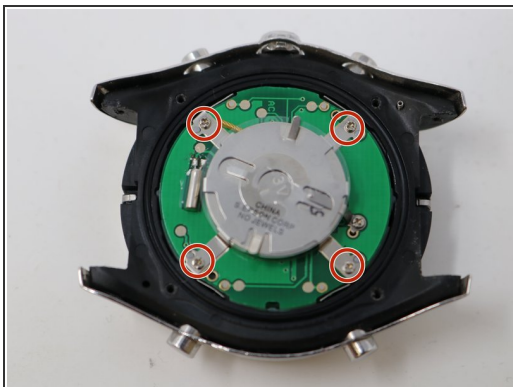
- Carefully separate the panel off of the watch.
- ⓘ Careful not to lose the four 1.1 mm screw or else the back panel will not be able to put back.

Step 5 — Analog Battery



- Carefully lift the white plastic circular out of the watch.

Step 6



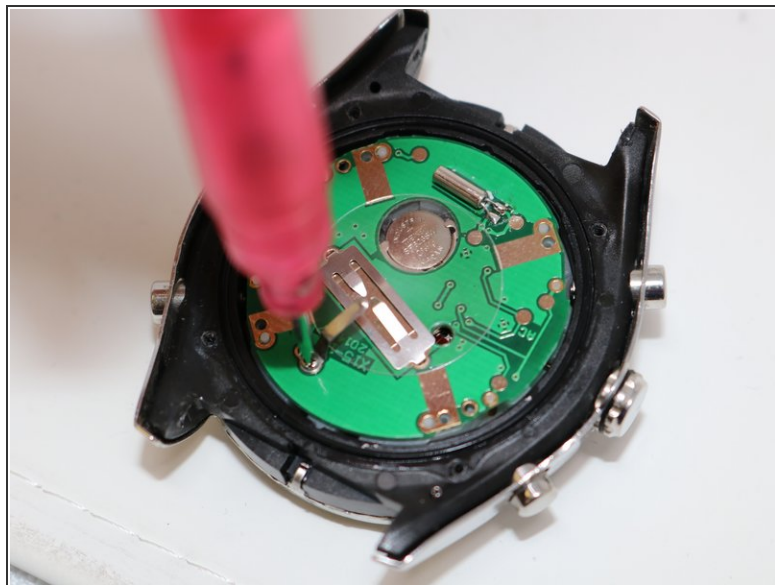
- Remove the four 1.1 mm screws located on the metallic holder using the Phillips #00 screwdriver.

Step 7



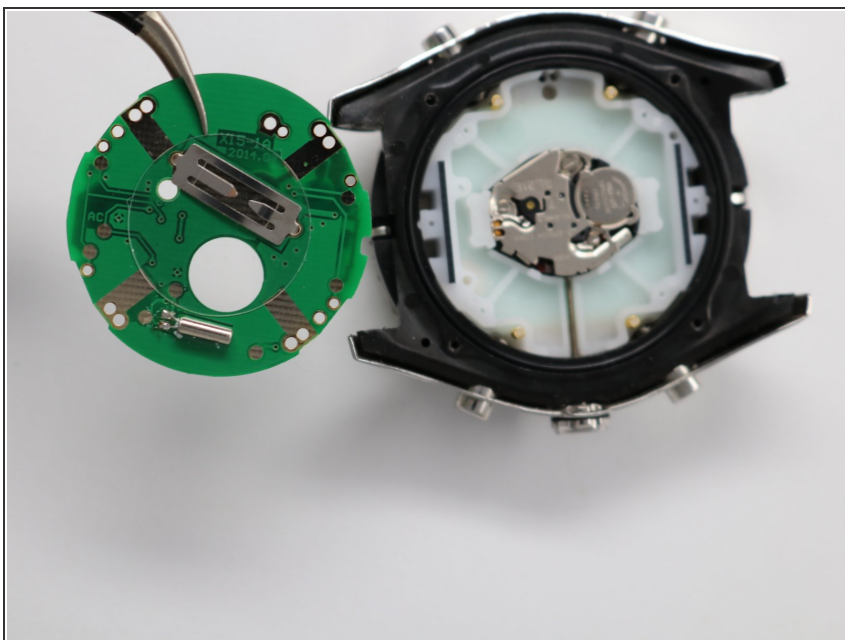
- Remove the large circular Analog battery.

Step 8 — Circuit Board



- Using the Phillips #00 screwdriver, remove the two 1 mm screws holding the circuit board to the device.

Step 9



- Remove the green circular chip using a pair of tweezers.

To reassemble your device, follow these instructions in reverse order.

This document was generated on 2020-02-26 02:02:48 PM (MST).

