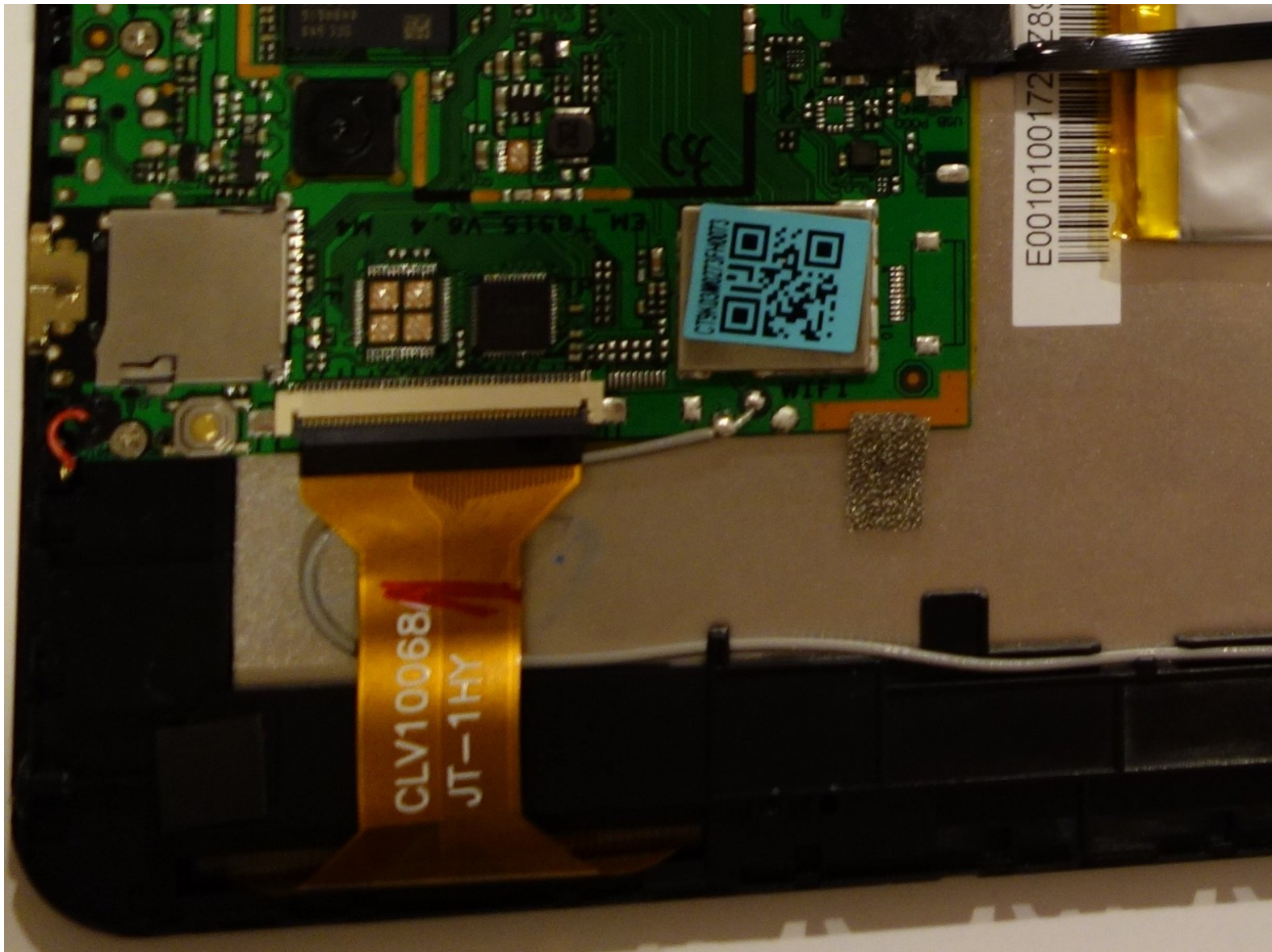




RCA 10 Viking Pro RCT6K03W13 Antenna Replacement

This guide will talk you through the process of replacing the antenna in your RCA 10 Viking Pro RCT6K03W13.

Written By: Ryan Wickett

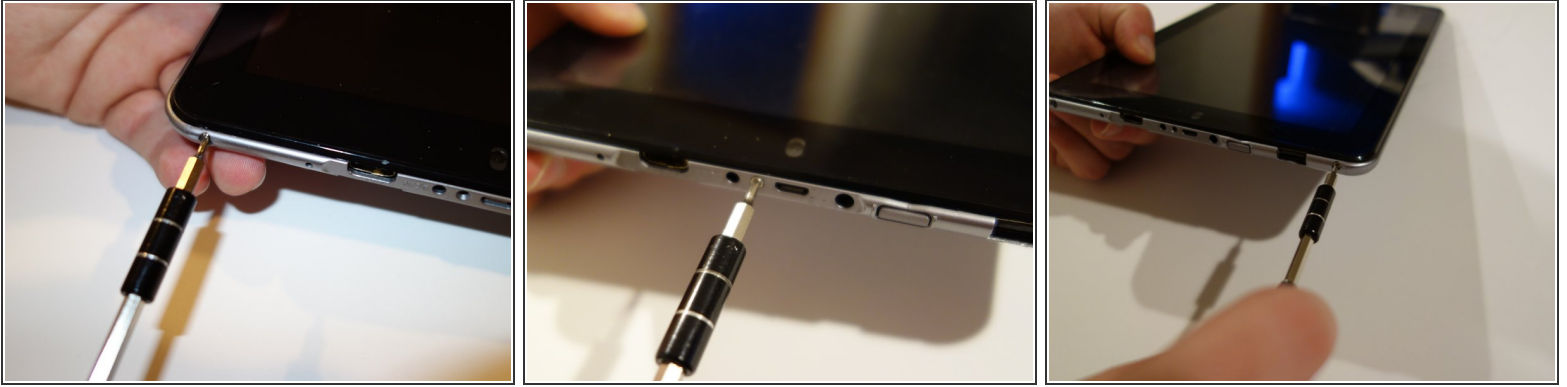




TOOLS:

- [Spudger](#) (1)
 - [Phillips #00 Screwdriver](#) (1)
 - [Soldering Iron](#) (1)
-

Step 1 — Backplate



- Remove the three Phillips #00 screws at the bottom of the device.

Step 2



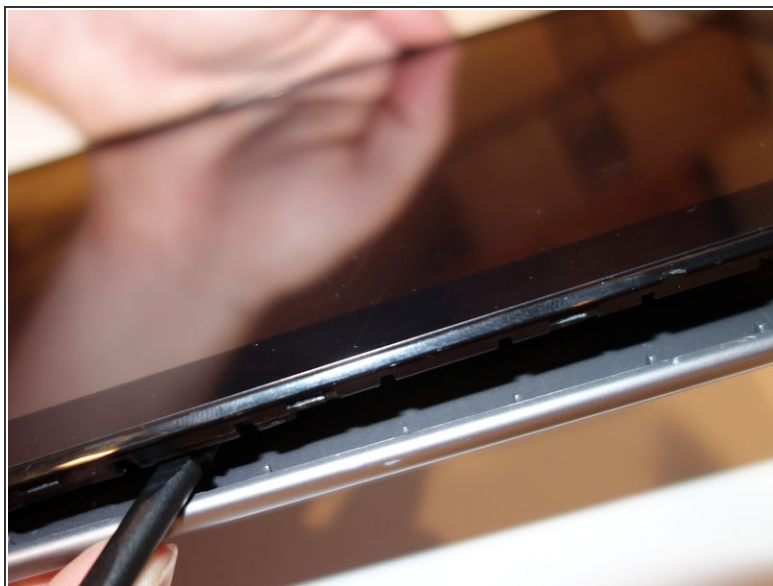
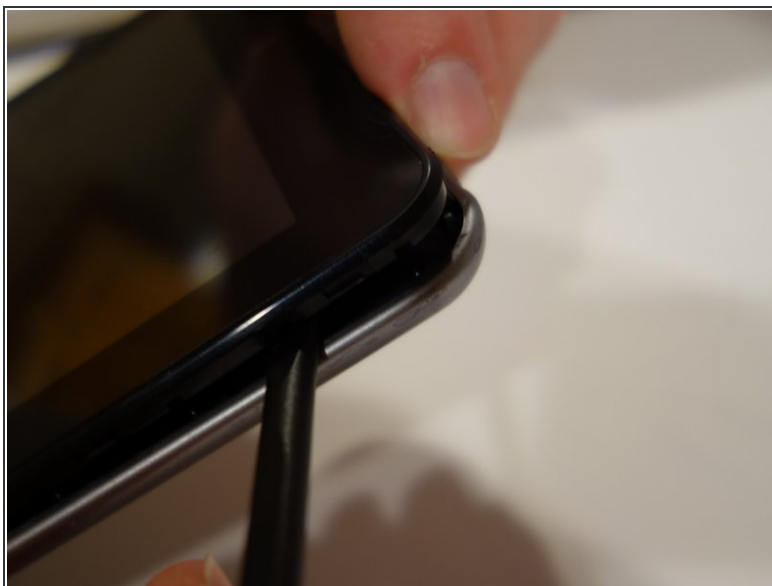
- Remove the two Phillips #00 screws to the left and right of the keyboard connector.

Step 3



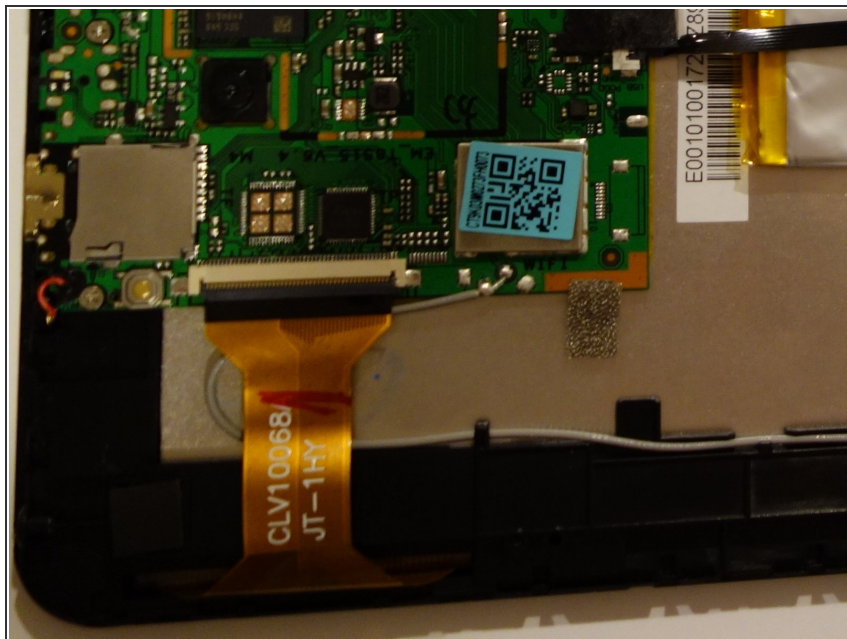
- Pull on one of the bottom corners to begin to pull off the back plate.

Step 4



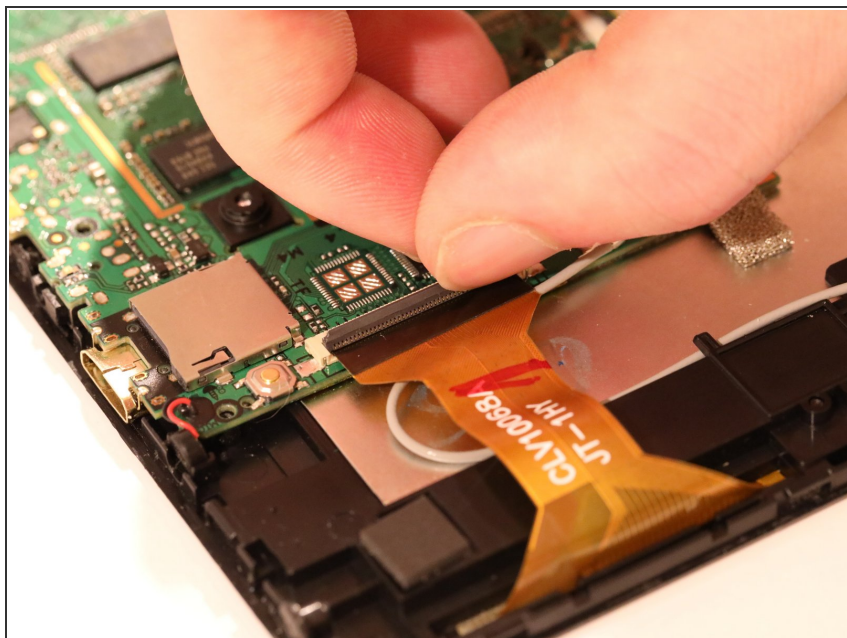
- Work around the outside of the chassis, using the spudger to pry the backplate off.
- ⓘ After doing this for about half the device, the backplate should pop right off.

Step 5 — Antenna



- Identify the grey wire on the right side of the device.

Step 6



- Remove the orange ribbon cable over the wire.

Step 7



- Remove the antenna using a soldering iron.

To reassemble your device, follow these instructions in reverse order.