



RCA 10 Viking Pro RCT6K03W13 Backplate Replacement

The purpose of this guide is to show how to remove and replace the backplate of the RCA 10 Viking Pro RCT6K03W13.

Written By: Ryan Wickett

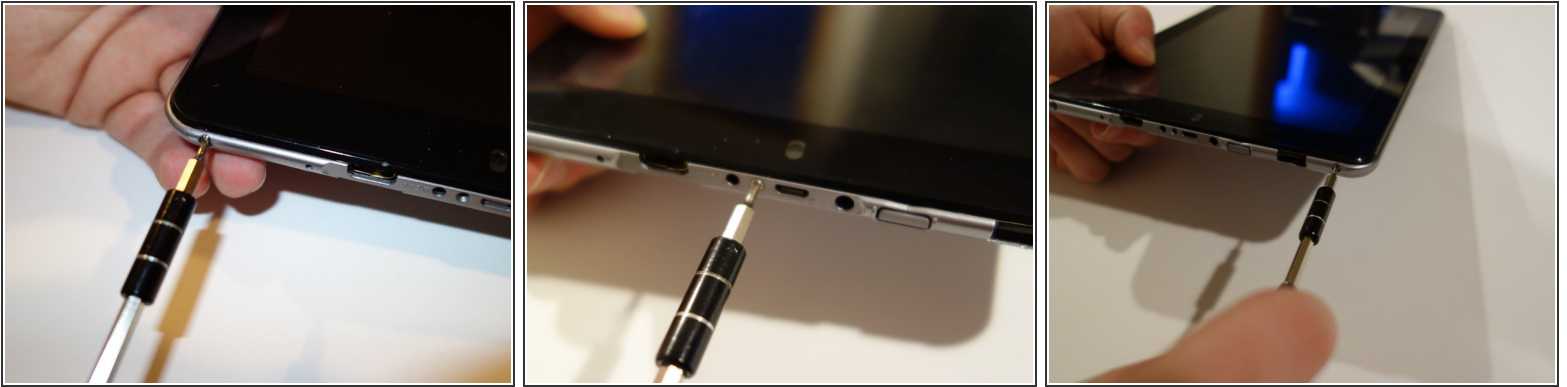




TOOLS:

- [Spudger](#) (1)
 - [Phillips #00 Screwdriver](#) (1)
-

Step 1 — Backplate



- Remove the three Phillips #00 screws at the bottom of the device.

Step 2



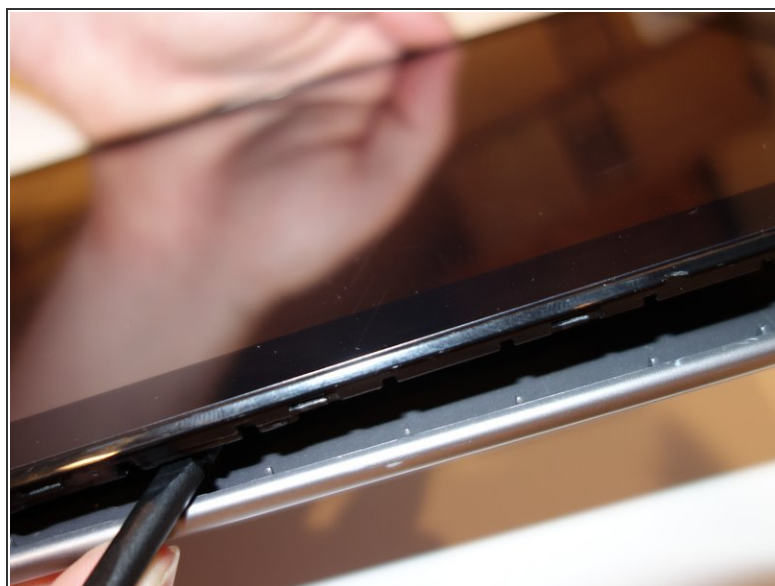
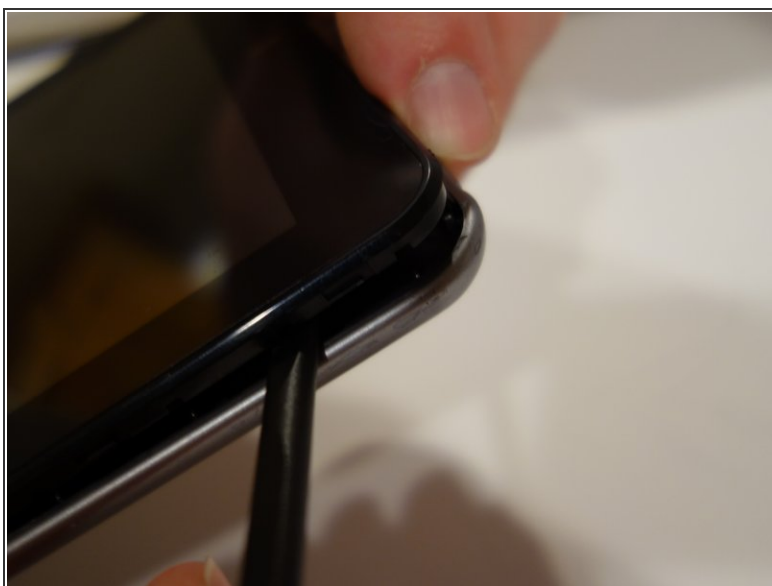
- Remove the two Phillips #00 screws to the left and right of the keyboard connector.

Step 3



- Pull on one of the bottom corners to begin to pull off the back plate.

Step 4



- Work around the outside of the chassis, using the spudger to pry the backplate off.
- ⓘ After doing this for about half the device, the backplate should pop right off.

To reassemble your device, follow these instructions in reverse order.