



RCA 10 Viking Pro RCT6K03W13 Battery Replacement

Use this guide to replace the battery in your RCA 10 Viking Pro RCT6K03W13.

Written By: Ryan Wickett



INTRODUCTION

This guide will talk you through the process of replacing the battery in your RCA 10 Viking Pro RCT6K03W13.



TOOLS:

- [Spudger](#) (1)
 - [Phillips #00 Screwdriver](#) (1)
-

Step 1 — Backplate



- Remove the three Phillips #00 screws at the bottom of the device.

Step 2



- Remove the two Phillips #00 screws to the left and right of the keyboard connector.

Step 3



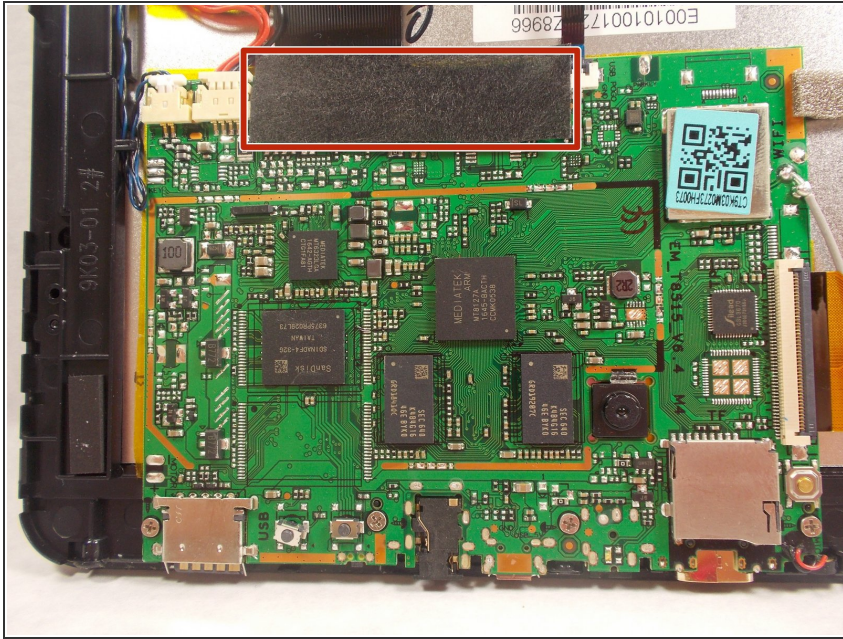
- Pull on one of the bottom corners to begin to pull off the back plate.

Step 4



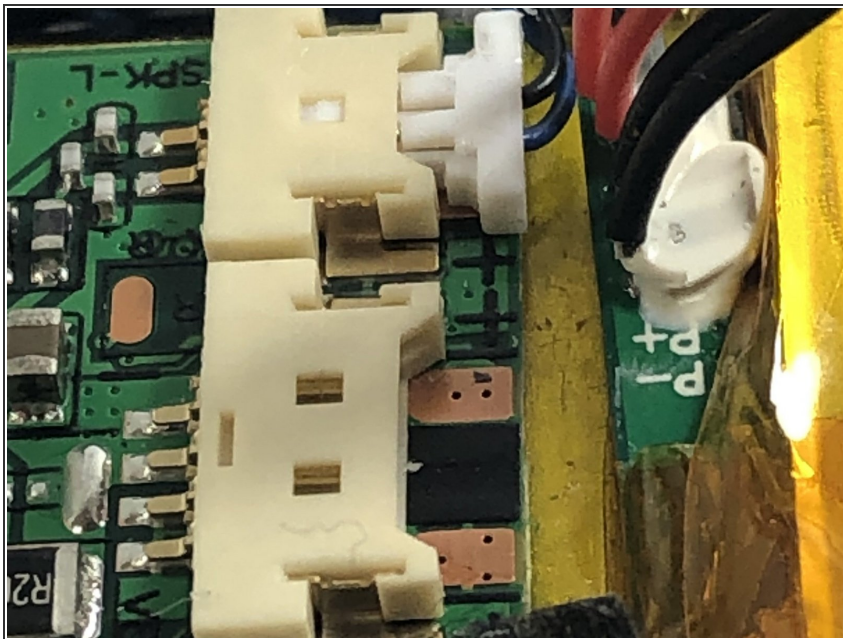
- Work around the outside of the chassis, using the spudger to pry the backplate off.
- ⓘ After doing this for about half the device, the backplate should pop right off.

Step 5 — Battery



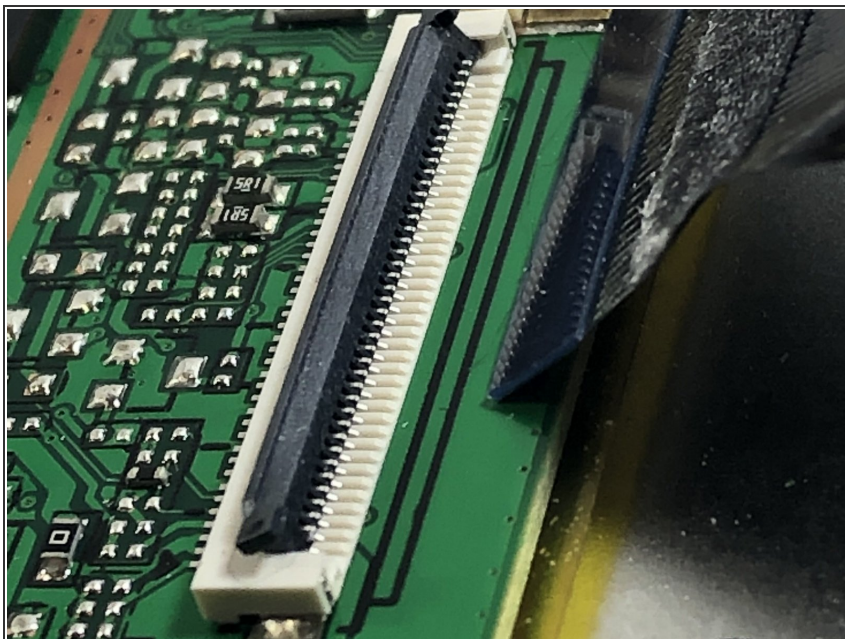
- Remove the tape over the connectors on the motherboard and other side of the battery.

Step 6



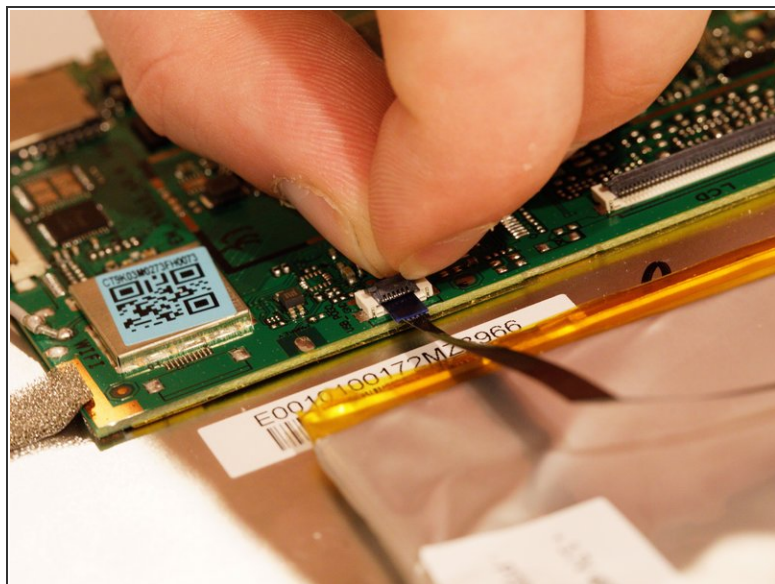
- Disconnect the red and black keyboard wires connecting the battery to the motherboard.

Step 7



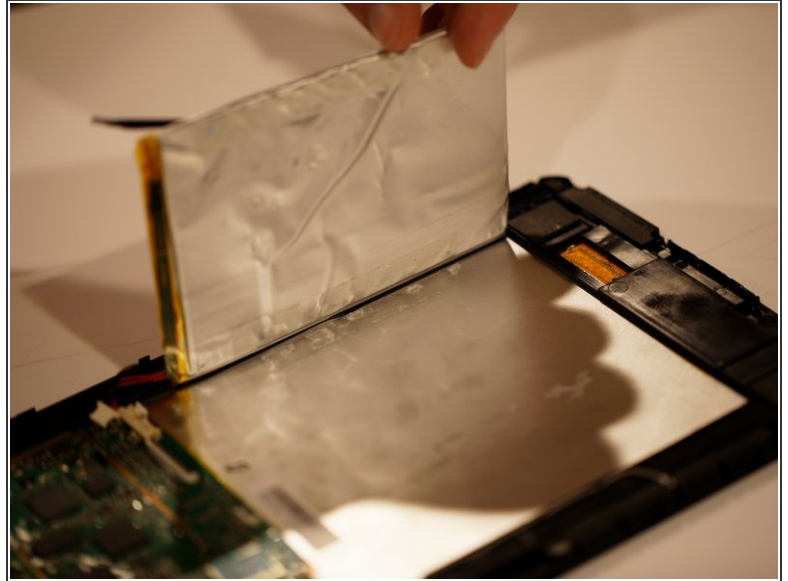
- Disconnect the black ribbon cable running over the battery. Flip up the black clamp and pull the cable out.

Step 8



- Remove the cable over the battery connecting the motherboard and the power connector.
- Flip up the black clamp and pull the cable out.

Step 9



- Pull out battery. It is taped to the device so it is safe to pull out.
- ⚠ Look for damage to the battery. If damaged, make sure to not get any acid on your fingers.

To reassemble your device, follow these instructions in reverse order.