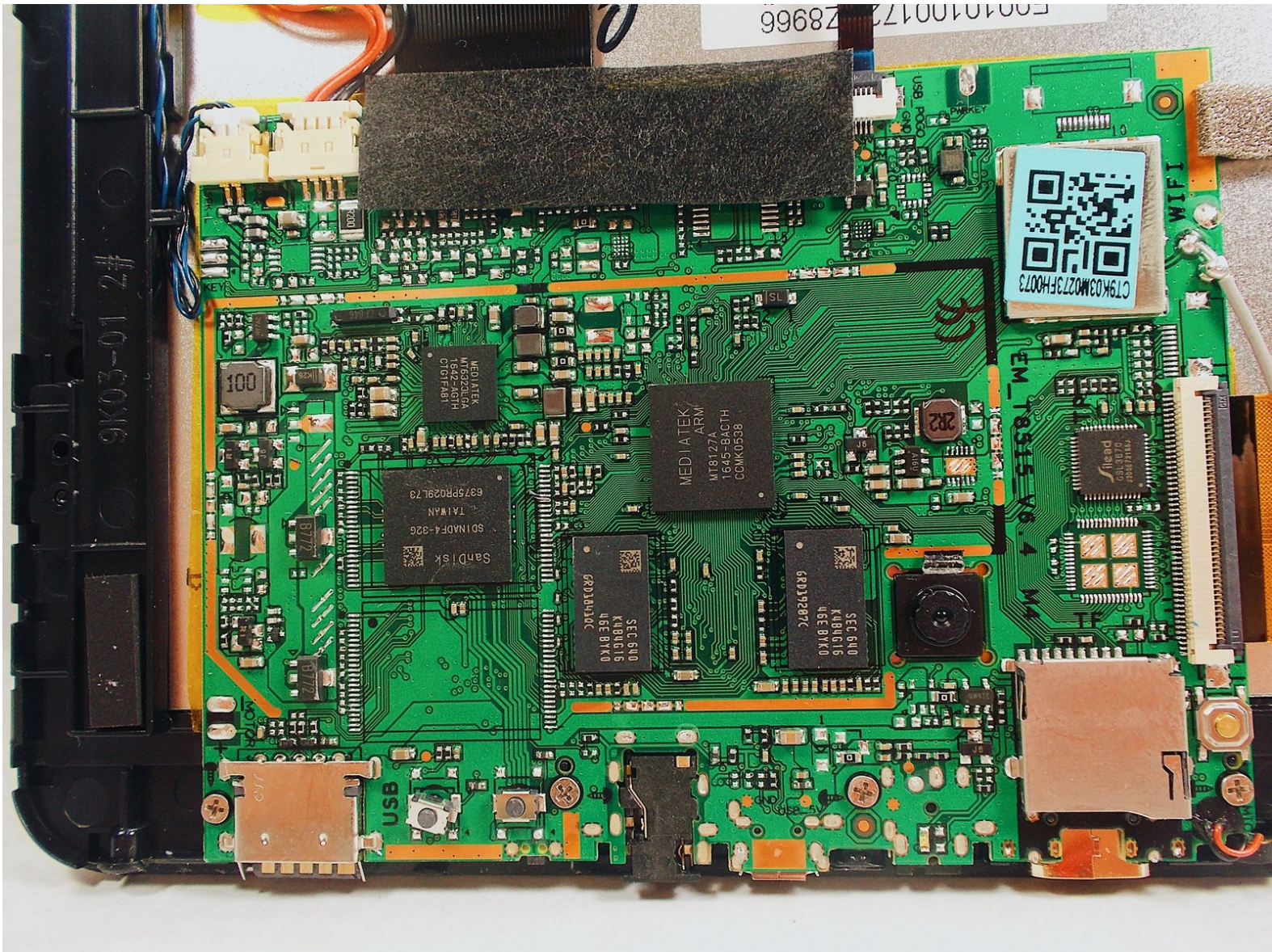




# RCA 10 Viking Pro RCT6K03W13 Motherboard Replacement

This guide will teach the user how to replace the motherboard for the RCA 10 Viking Pro RCT6K03W13.

Written By: Marcus Elysee



This document was generated on 2020-02-14 12:17:15 PM (MST).



## TOOLS:

- [Soldering Iron](#) (1)
  - [Spudger](#) (1)
  - [Phillips #00 Screwdriver](#) (1)
-



## Step 1 — Backplate



- Remove the three Phillips #00 screws at the bottom of the device.

## Step 2



- Remove the two Phillips #00 screws to the left and right of the keyboard connector.

### Step 3



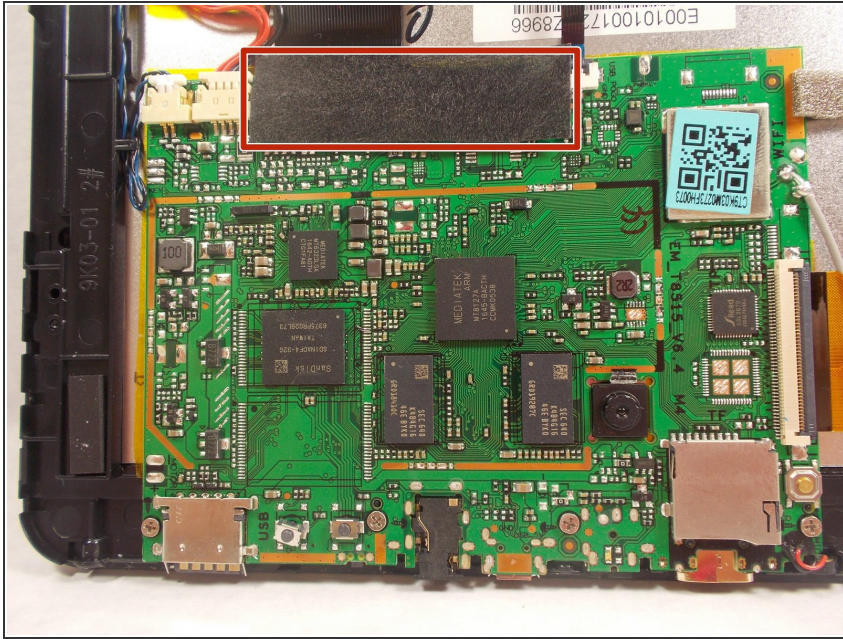
- Pull on one of the bottom corners to begin to pull off the back plate.

### Step 4



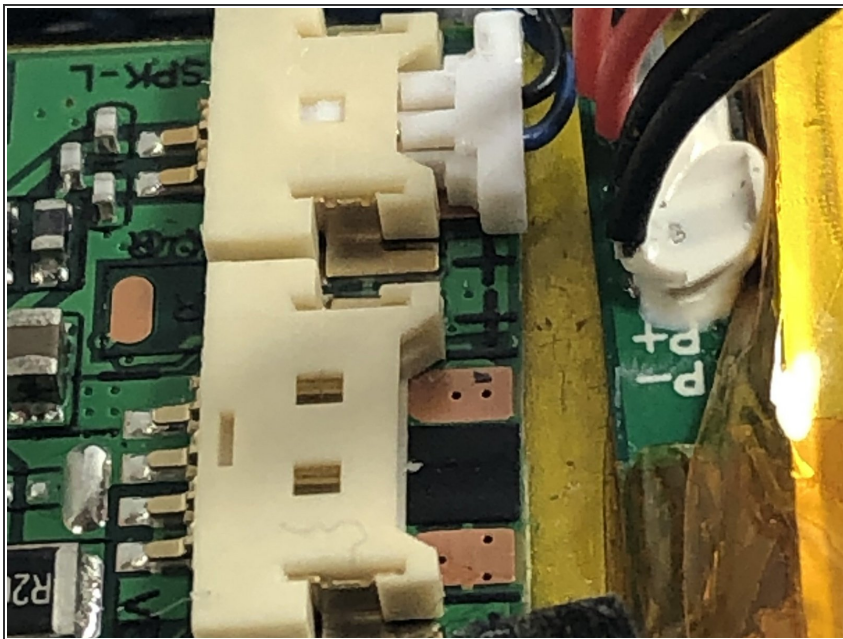
- Work around the outside of the chassis, using the spudger to pry the backplate off.
- ⓘ After doing this for about half the device, the backplate should pop right off.

## Step 5 — Battery



- Remove the tape over the connectors on the motherboard and other side of the battery.

## Step 6



- Disconnect the red and black keyboard wires connecting the battery to the motherboard.

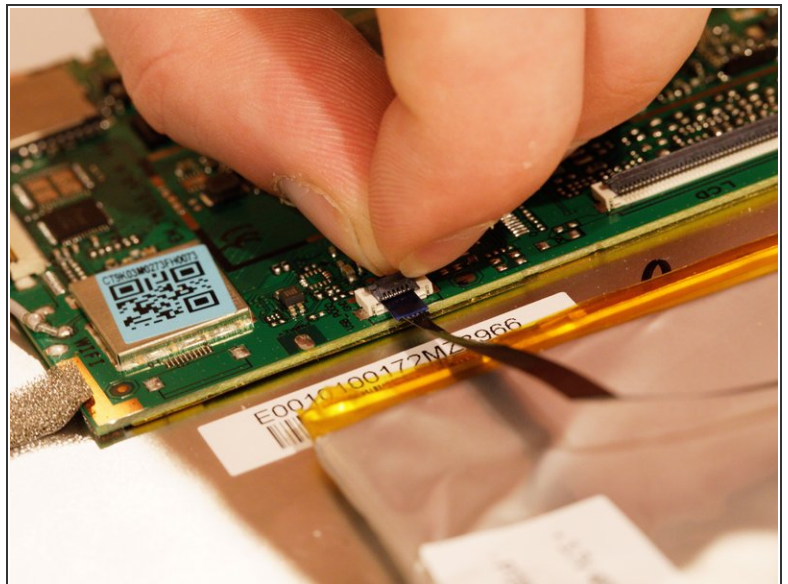


## Step 7



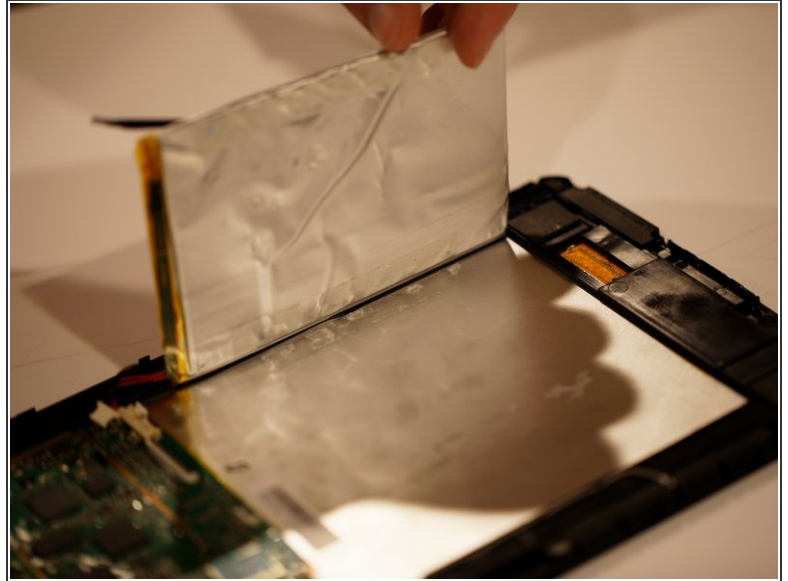
- Disconnect the black ribbon cable running over the battery. Flip up the black clamp and pull the cable out.

## Step 8



- Remove the cable over the battery connecting the motherboard and the power connector.
- Flip up the black clamp and pull the cable out.

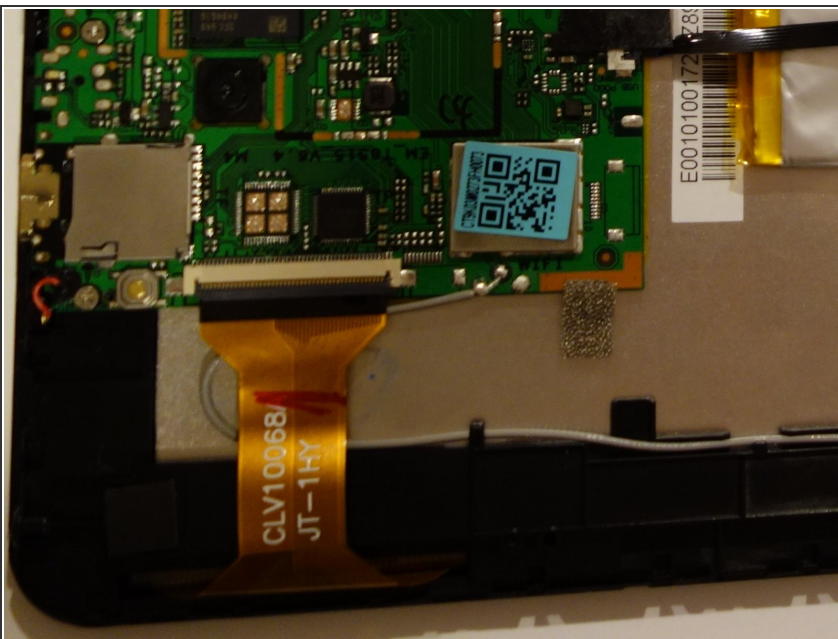
## Step 9



- Pull out battery. It is taped to the device so it is safe to pull out.

⚠ Look for damage to the battery. If damaged, make sure to not get any acid on your fingers.

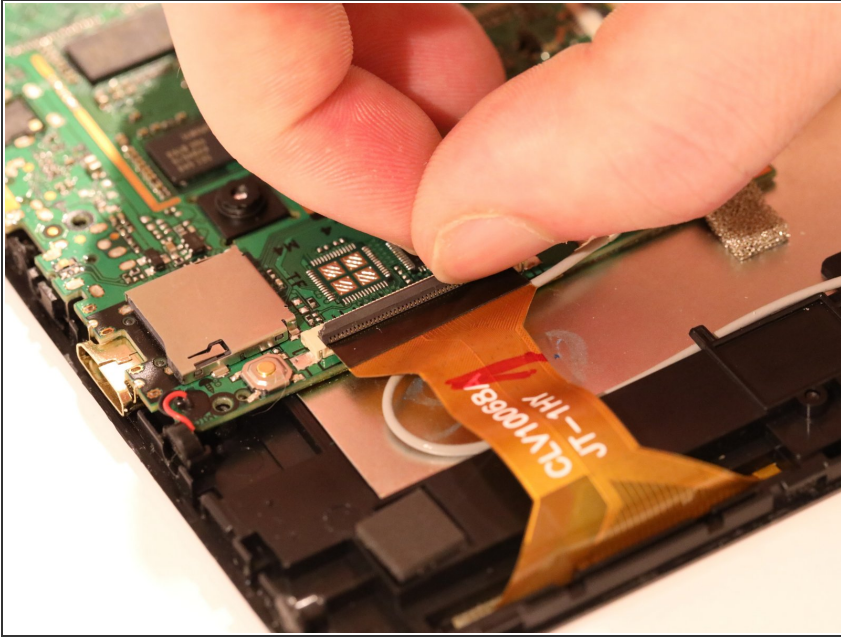
## Step 10 — Antenna



- Identify the grey wire on the right side of the device.



## Step 11



- Remove the orange ribbon cable over the wire.

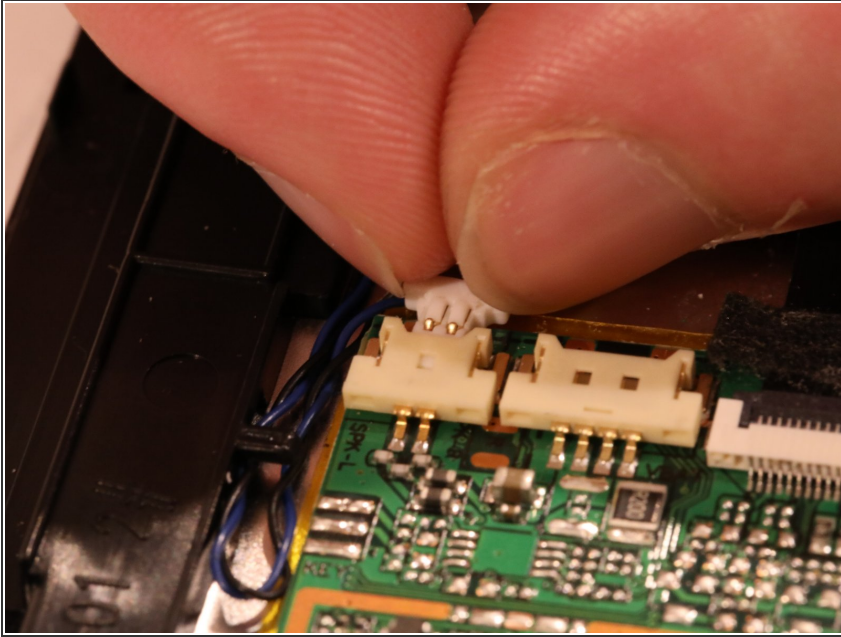
## Step 12



- Remove the antenna using a soldering iron.

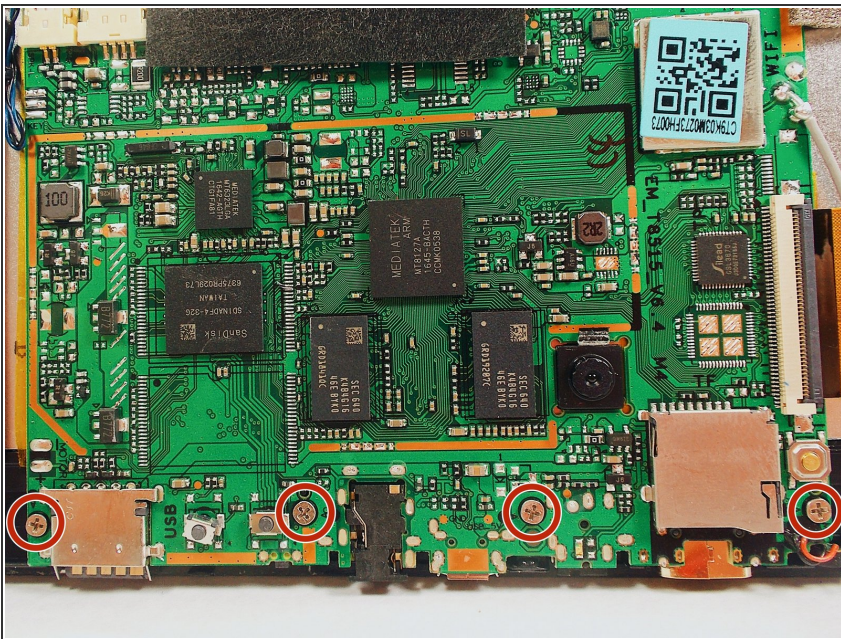


## Step 13 — Motherboard



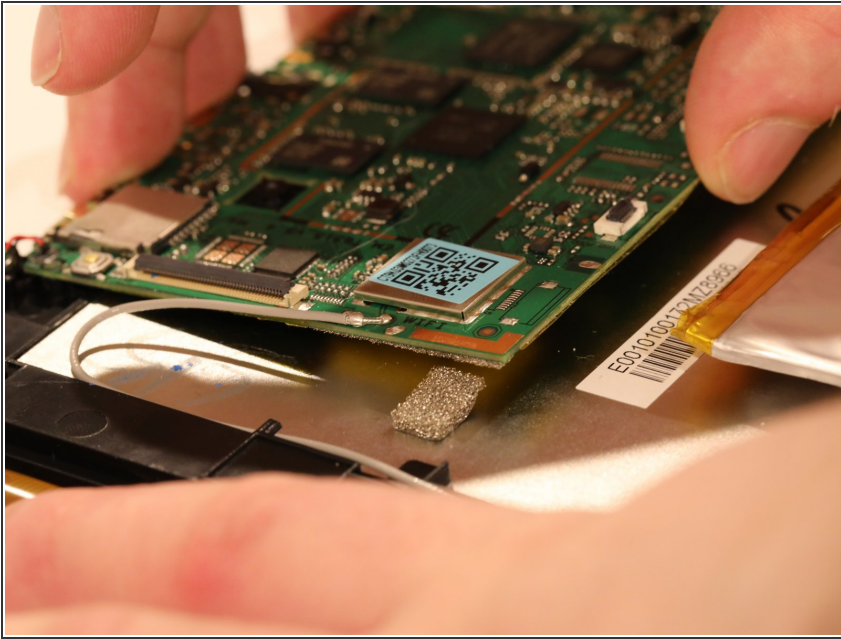
- Remove the blue and black wire from the top of the motherboard.

## Step 14



- Remove the screws from the motherboard.

## Step 15



- Remove the motherboard.

To reassemble your device, follow these instructions in reverse order.