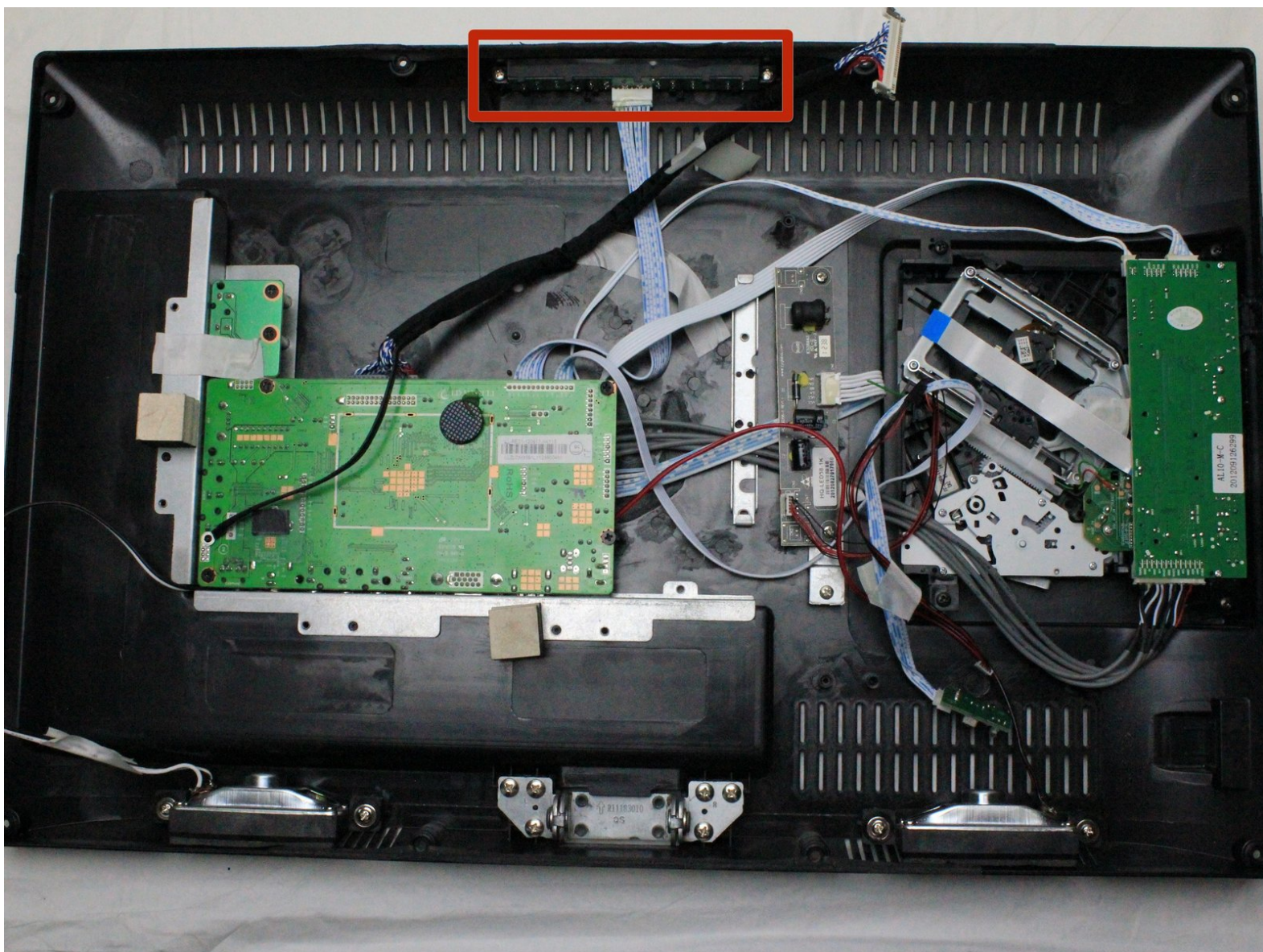




RCA 22" DECK215R HDTV Button Replacement

This guide will show you how to remove the buttons on the top of the RCA DECK215R HDTV. These buttons include volume, channel, and input.

Written By: Patrick Soper



INTRODUCTION

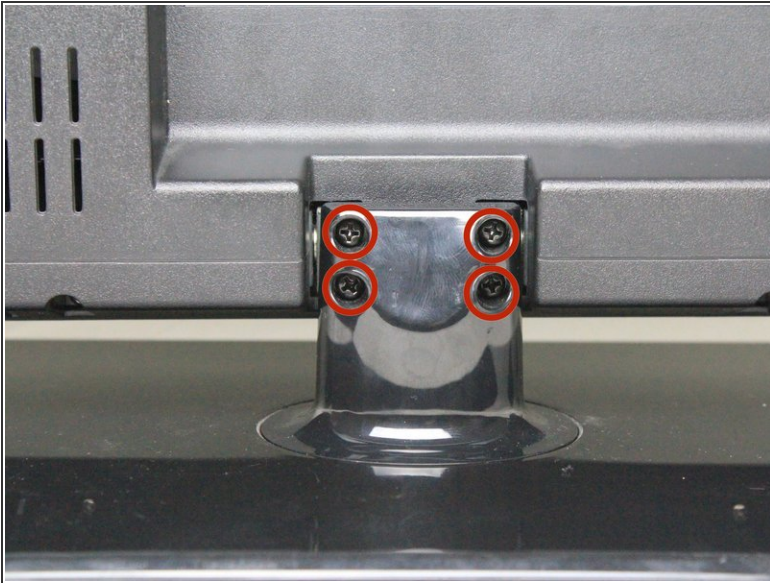
If your buttons are stuck and you made sure nothing is wedged around them, this guide will show you how to replace them. This button replacement guide applies only to the buttons on top of the TV controlling power, source, menu, channel, and volume. The buttons controlling the DVD drive are connected to the TV frame and are not replaceable.




TOOLS:

- [Phillips #0 Screwdriver](#) (1)
 - [Phillips #2 Screwdriver](#) (1)
 - [iFixit Opening Tools](#) (1)
-

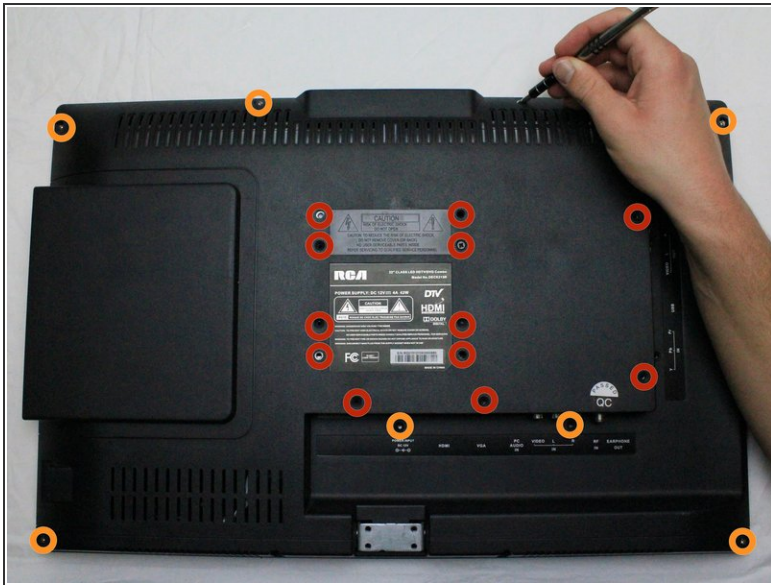
Step 1 — Removing the Stand



 Before disassembling your television, ensure that all cables are unplugged from their power source to avoid serious injury or death from electrocution.

- Lay the TV flat with the screen facing down.
- Remove the four, 12mm Phillips #2 screws from the back of the TV stand. Support the TV from underneath as you remove the screws, so the bottom does not fall on the table.
- Remove the stand by lifting it away from the TV's backing.

Step 2 — Removing the Back Panel



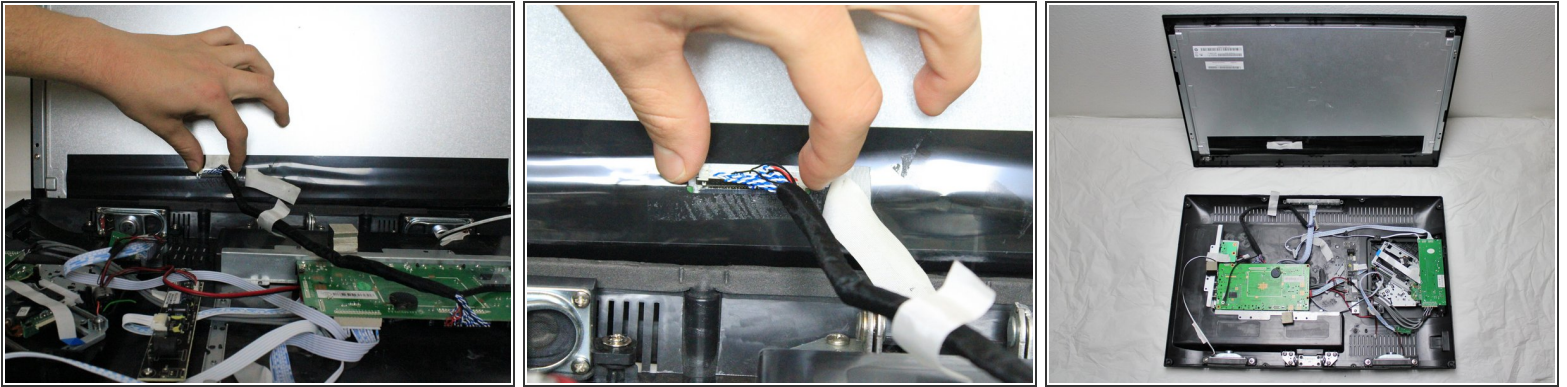
- Remove the twelve, 6mm Phillips #2 screws from the middle of the TV's rear casing.
- Remove the seven, 9mm Phillips #2 screws from the outer edge of the TV's rear casing.
- While holding the screen down, pull the back panel up slowly, ensuring that you do not forcibly disconnect the remaining ribbon cable.

Step 3 — Locate Pin



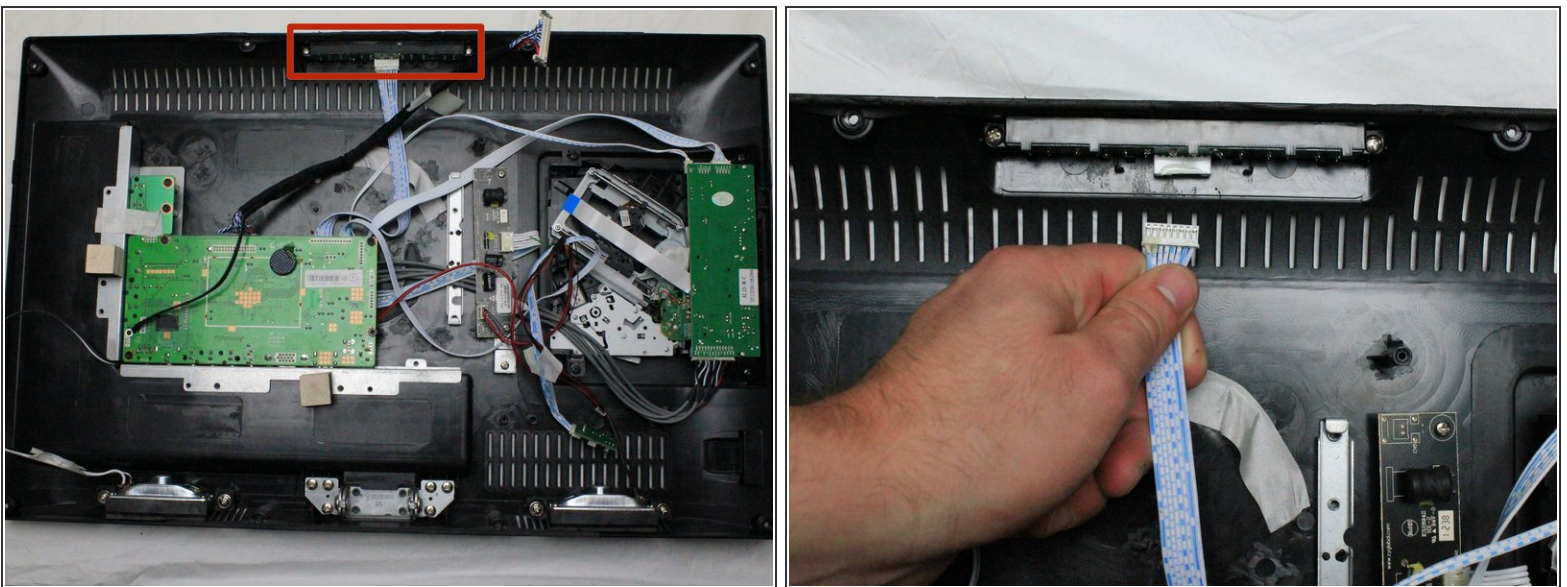
- Position the television to where the back panel is resting on the table and the screen is vertical.
- Peel the tape covering the ribbon cable horizontally.

Step 4



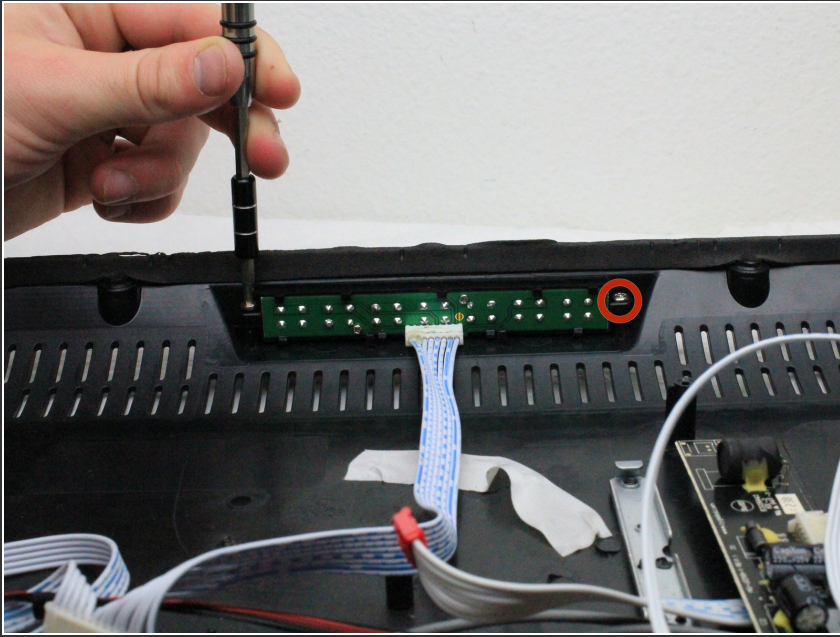
- Pinch the clamps on both sides of the ribbon cable casing to detach it from the screen panel.
- Remove the screen to isolate the back panel.

Step 5 — Button



- Locate the button circuit board on top of the TV plastic frame.
- Remove the blue and white ribbon cable connected to the circuit board by pulling with moderate to heavy force away from the circuit board.

Step 6 — Locating the Top Buttons



- Remove the two 10mm Phillips #2 screws from the top of the button circuit board.

Step 7



- Lightly peel back the TV's plastic frame, pressing down on the buttons from the outside.
- Holding this position, insert a plastic opening tool on top of the button circuit board.
- Apply forward pressure to pry out the circuit board and buttons from the frame.

To reassemble your device, follow these instructions in reverse order.