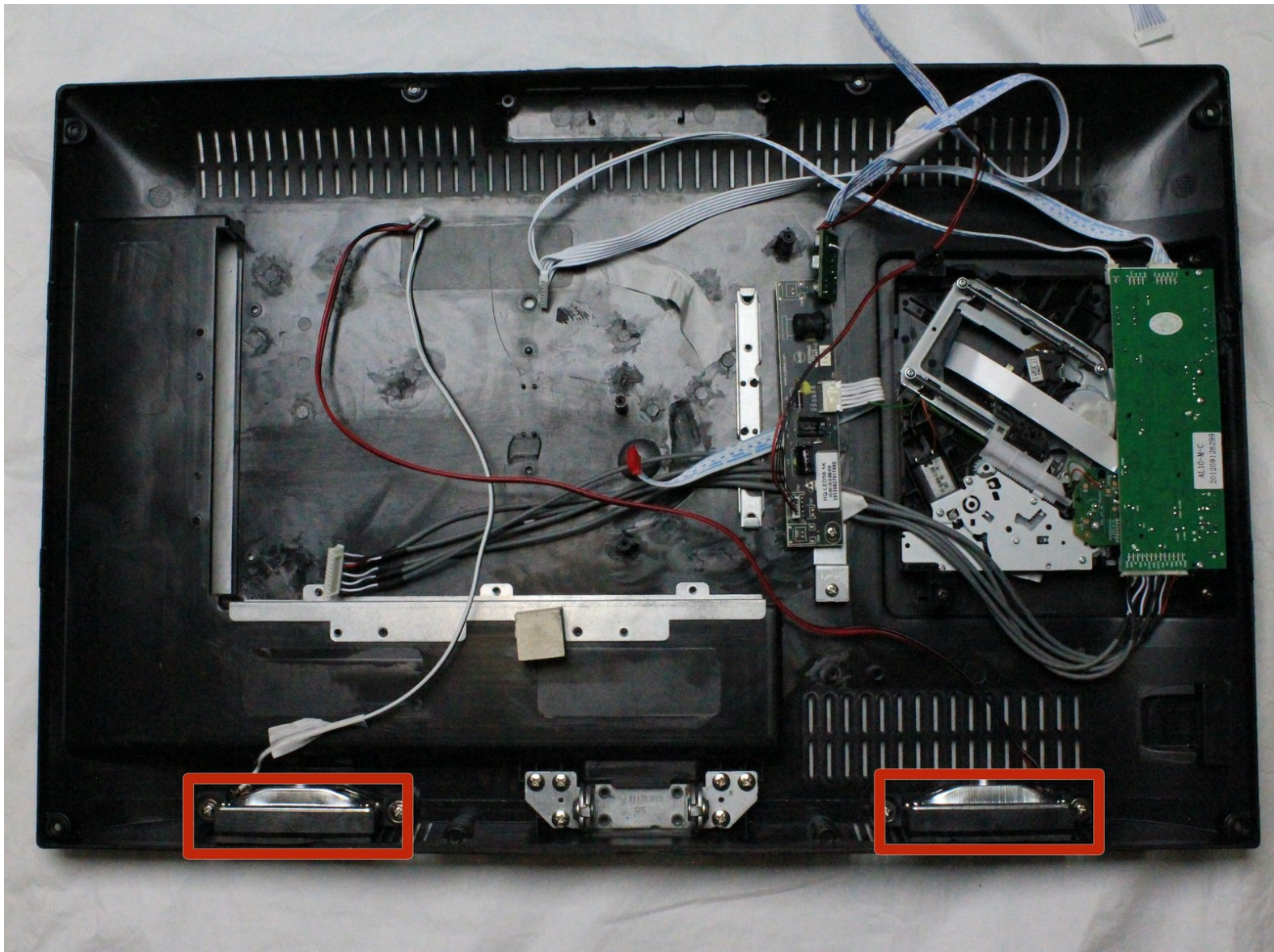




RCA 22" DECK215R HDTV Speaker Replacement

This guide explains how to remove the two speakers from the RCA DECK 215R HDTV.

Written By: Patrick Soper



INTRODUCTION

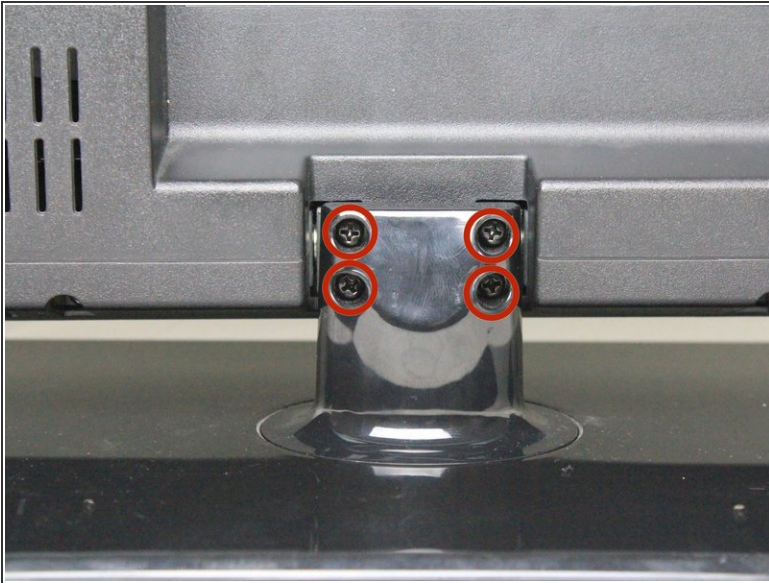
There are two speakers situated on the lower half of the TV. You may choose to upgrade your speakers or these speakers may malfunction and need to be replaced. This guide will teach you how to do so.



TOOLS:

- [Phillips #0 Screwdriver](#) (1)
 - [Phillips #2 Screwdriver](#) (1)
 - [Capacitor Discharge Tool](#) (1)
-

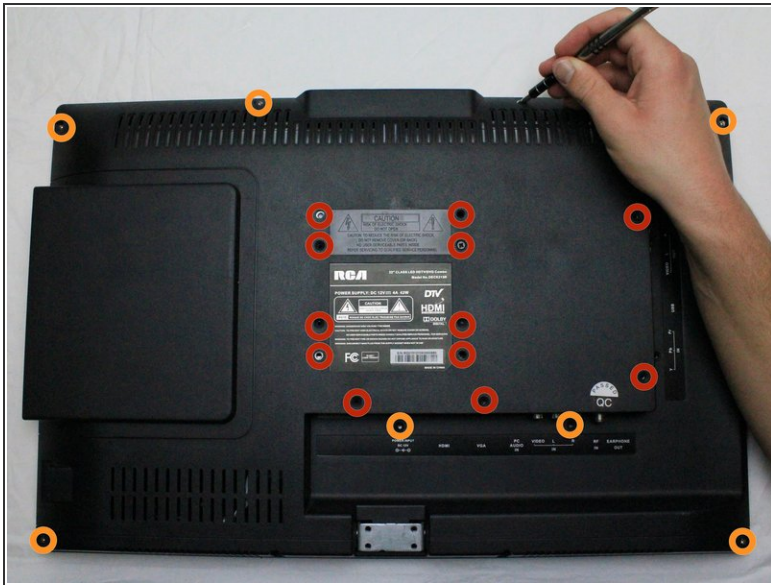
Step 1 — Removing the Stand



⚠ Before disassembling your television, ensure that all cables are unplugged from their power source to avoid serious injury or death from electrocution.

- Lay the TV flat with the screen facing down.
- Remove the four, 12mm Phillips #2 screws from the back of the TV stand. Support the TV from underneath as you remove the screws, so the bottom does not fall on the table.
- Remove the stand by lifting it away from the TV's backing.

Step 2 — Removing the Back Panel



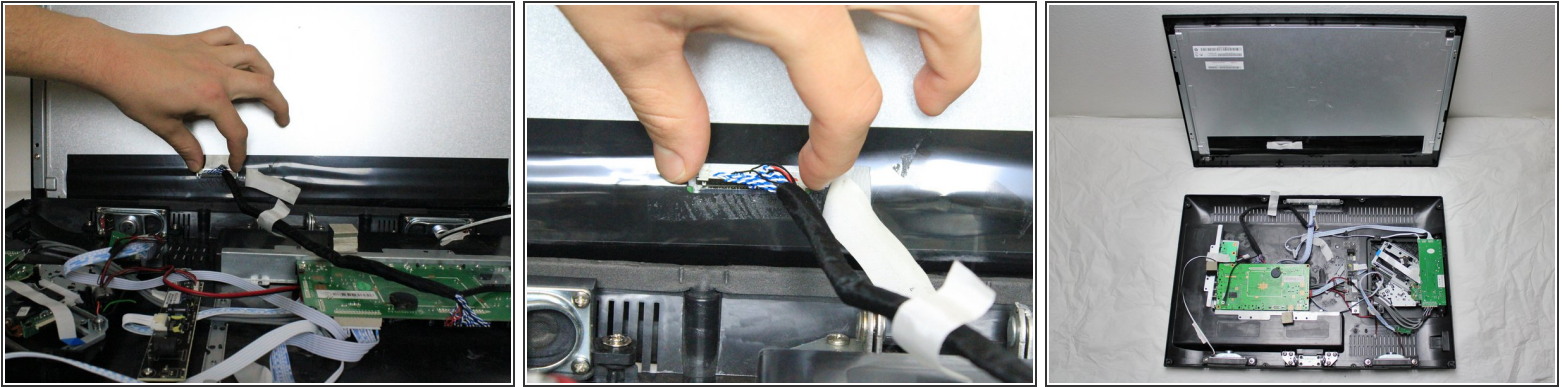
- Remove the twelve, 6mm Phillips #2 screws from the middle of the TV's rear casing.
- Remove the seven, 9mm Phillips #2 screws from the outer edge of the TV's rear casing.
- While holding the screen down, pull the back panel up slowly, ensuring that you do not forcibly disconnect the remaining ribbon cable.

Step 3 — Locate Pin



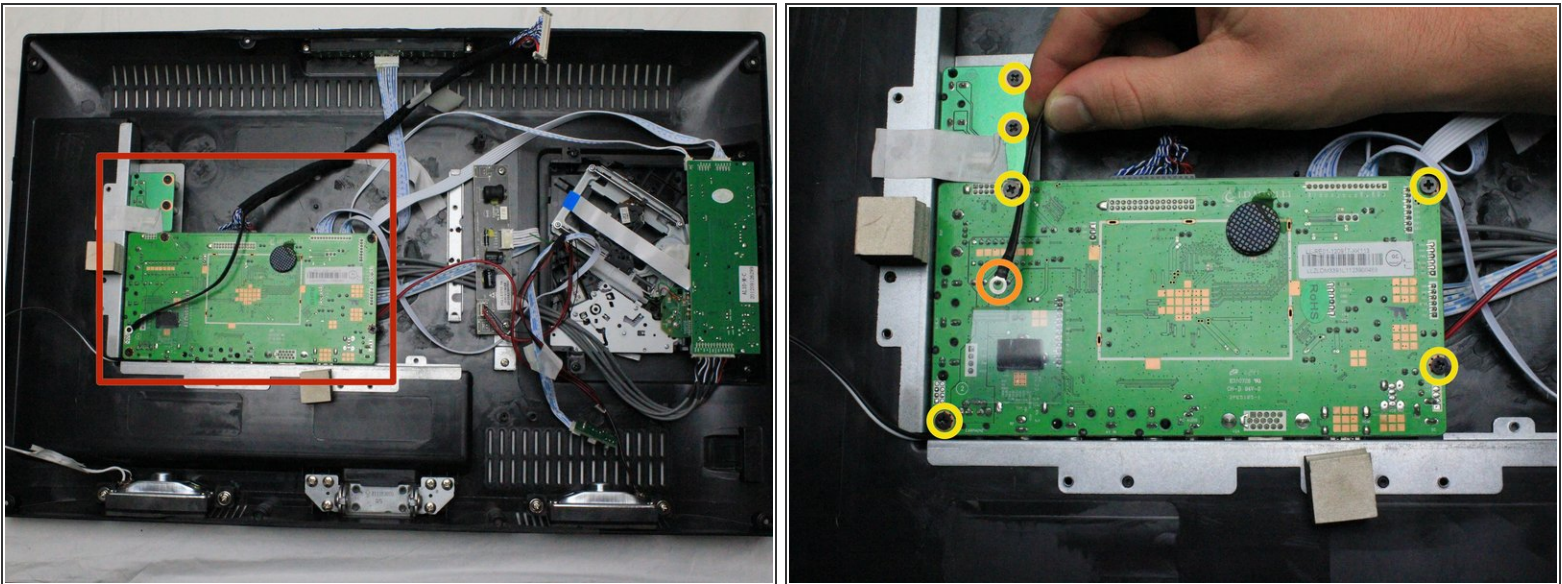
- Position the television to where the back panel is resting on the table and the screen is vertical.
- Peel the tape covering the ribbon cable horizontally.

Step 4



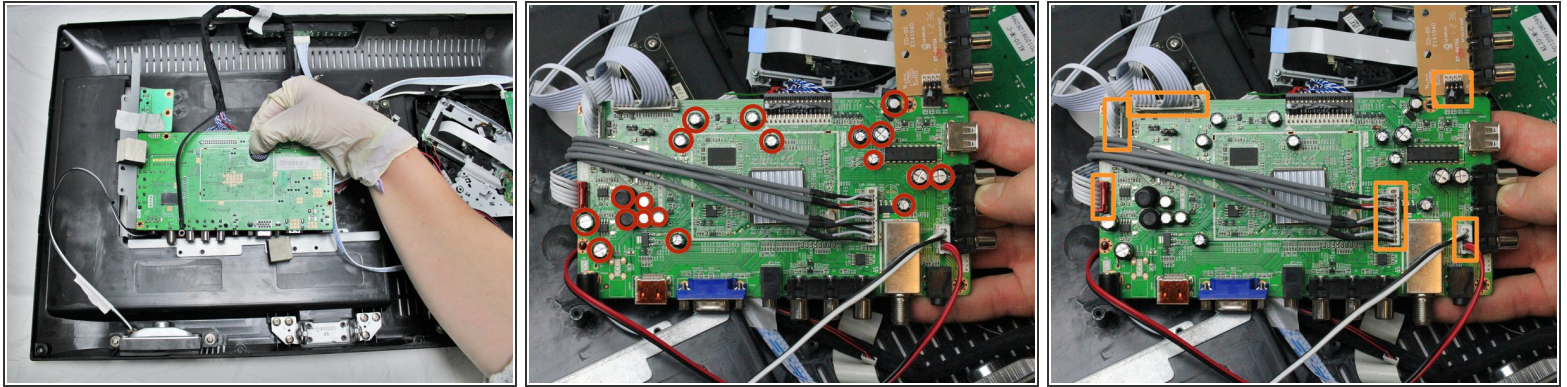
- Pinch the clamps on both sides of the ribbon cable casing to detach it from the screen panel.
- Remove the screen to isolate the back panel.

Step 5 — Detaching the Motherboard



- Identify the motherboard in the rear casing.
- Remove the ground cable from the motherboard by gently lifting it up as shown.
- Remove the six 6mm Phillips #2 screws from the perimeter of the motherboard.

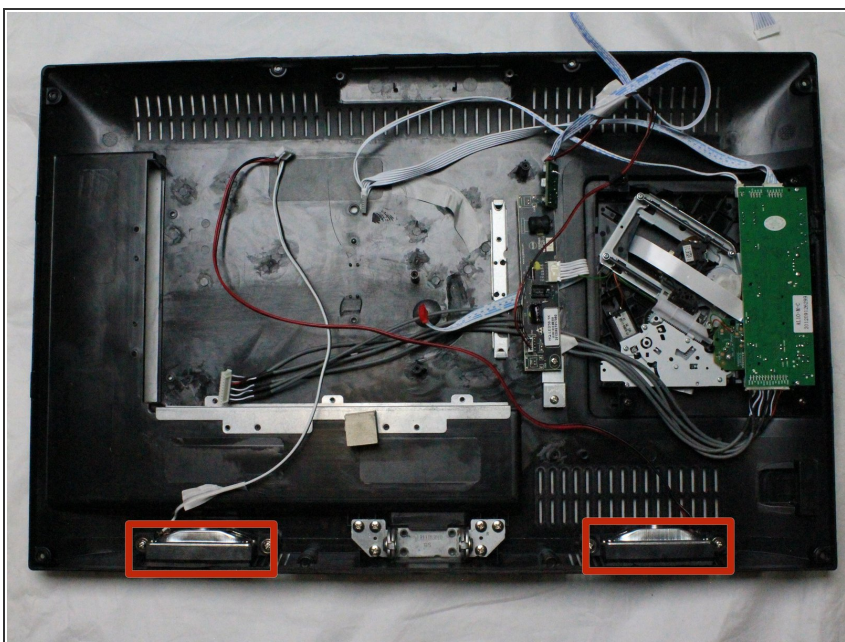
Step 6 — Preparing the Motherboard for Replacement



⚠ Caution: Before you remove the motherboard, be cautious of the many capacitors throughout that could cause serious injury or death. Use a discharge probe to safely rid the capacitors of dangerous charges. The following link provides an instructional video for how to properly complete this step: <https://www.youtube.com/watch?v=M-AlbrbT...>

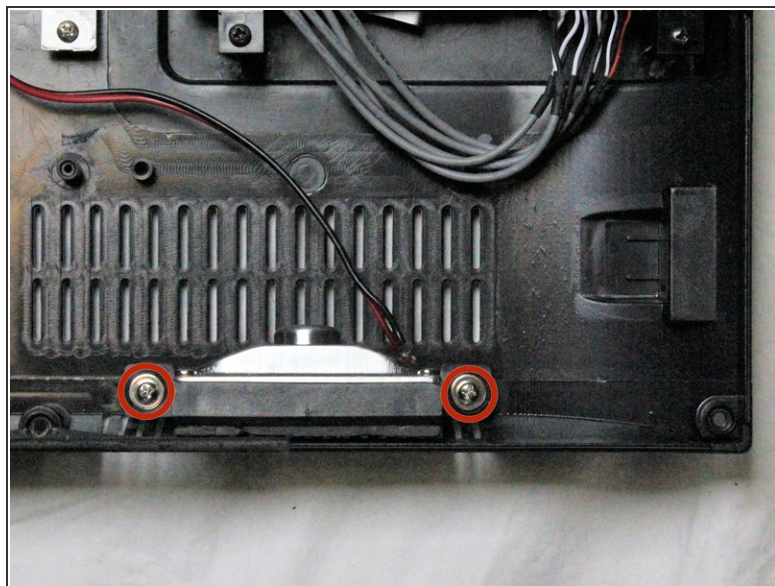
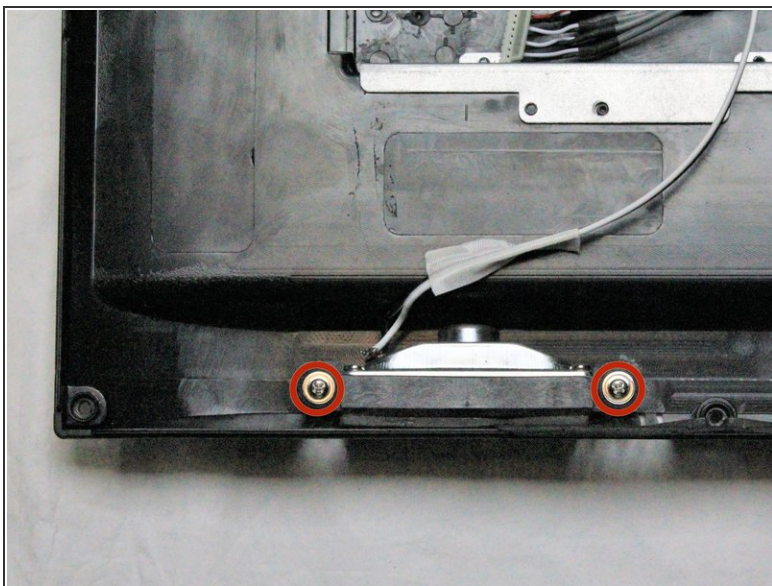
- ① Wearing rubber gloves and rubber soled shoes while working with and near the capacitors ensures greater safety and protection against electric shock. See iFixit's [Project Safety](#) page for additional safety information.
- Remove the motherboard by gripping the rubber stopper as shown and lifting the motherboard up out of its plastic housing.
- Carefully flip the motherboard over and locate the nineteen capacitors.
- Notice the six cables attached to the motherboard. Pull on each cable connector with moderate to heavy force to remove them.

Step 7 — Locate the Speakers



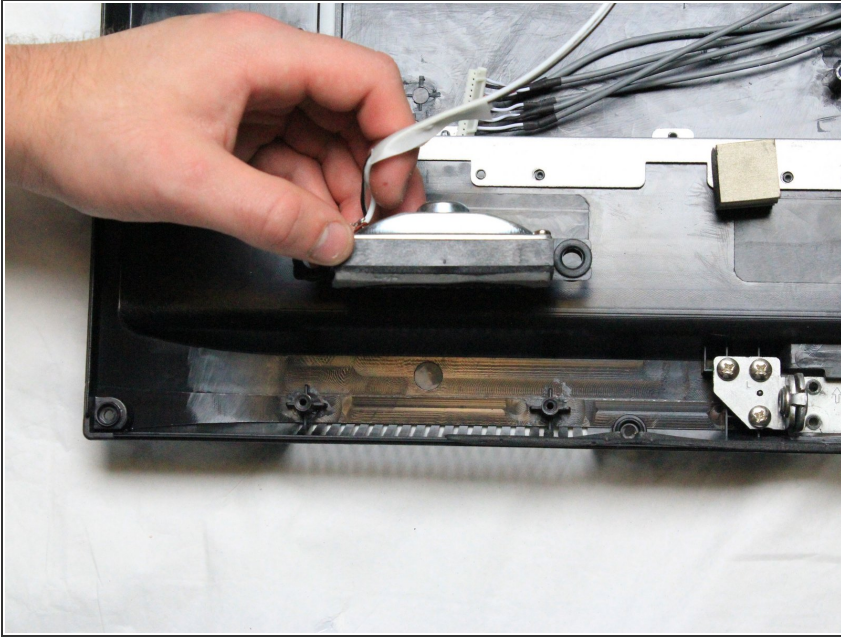
- Locate the two speakers along the bottom of the plastic casing.

Step 8 — Remove the Screws for the Speakers



- Remove the two 12mm Phillips #2 screws from each side of the speaker.
- Repeat the same process for the other speaker.

Step 9 — Remove the Speaker from Both Sides



- Lift up each speaker to remove it from the TV. The wires should already be unplugged from the motherboard and the speakers should now be completely isolated.

To reassemble your device, follow these instructions in reverse order.