



# RCA CC310 Effect Button Circuit Board Replacement

This guide will instruct you to replace the effect button circuit board on the RCA CC310.

Written By: Oliver Adams



---

## INTRODUCTION

This guide will instruct you to replace the effect button circuit board on the RCA CC310.

---

### TOOLS:

- [Phillips #0 Screwdriver](#) (1)
  - [Phillips #1 Screwdriver](#) (1)
  - [Spudger](#) (1)
-

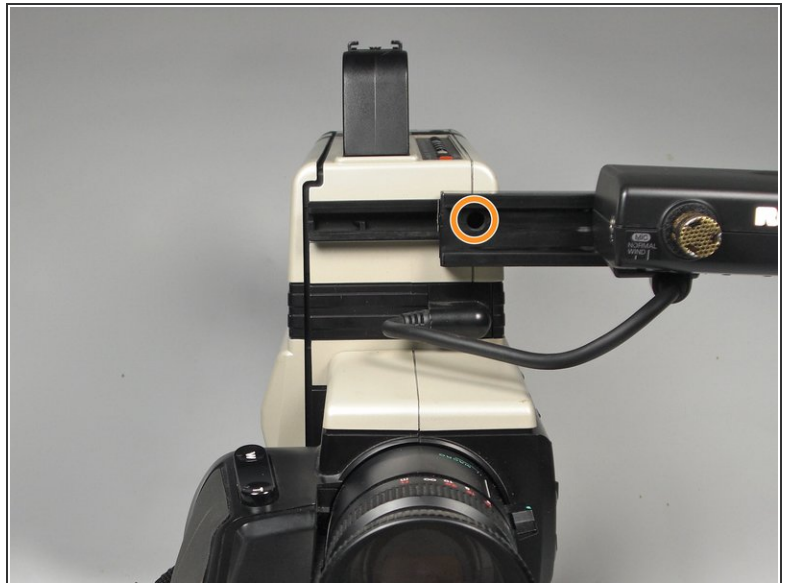
## Step 1 — Disassembling RCA CC310 Left Cover



- Remove the six 7.9mm Phillips #0 screws on the back and bottom.
- Remove the one 3.8mm Phillips #0 screw on the bottom.
- Remove the two 7.5mm Phillips #0 screws on the back and bottom.



## Step 2



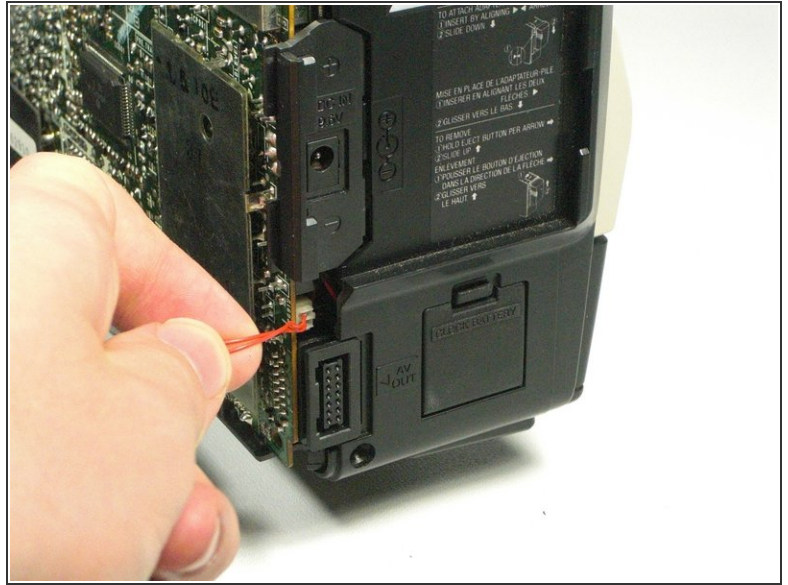
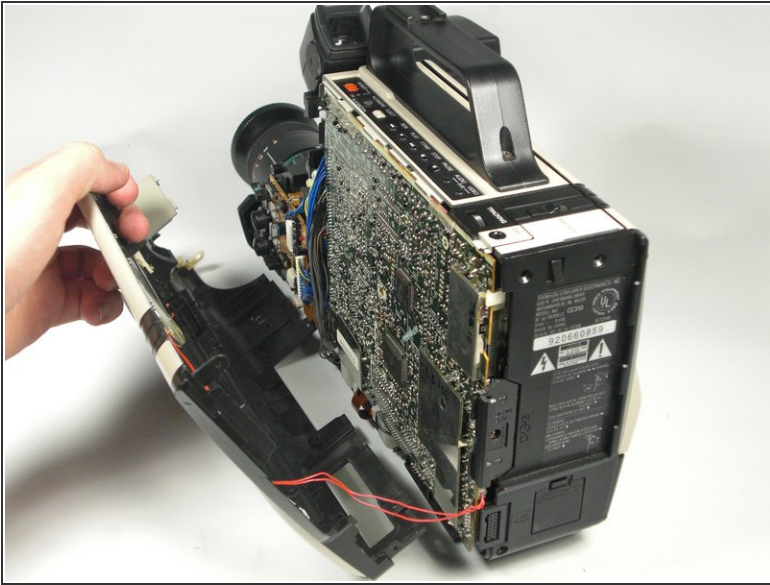
- Remove 5.8mm Phillips #1 screw from the side button panel.
- Slide the viewfinder all the way to the right and remove the 7.9mm Phillips #0 screw.

### Step 3




- Pry along the seam on the top side near the buttons with a spudger.

## Step 4

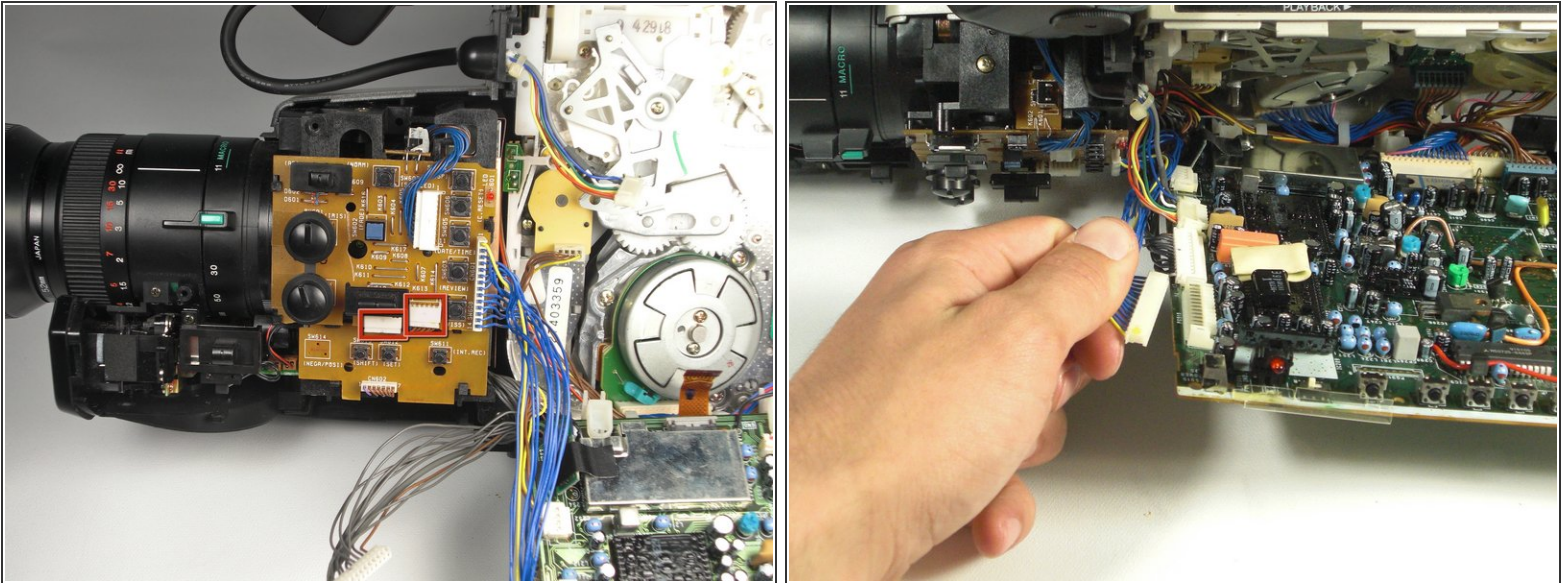


- Pull the left panel away from the rest of the camcorder.
- Unplug the red speaker cable located at the rear of the device.

 Be careful to not pull too hard. The speaker cable is still connected to the panel and it can rip.

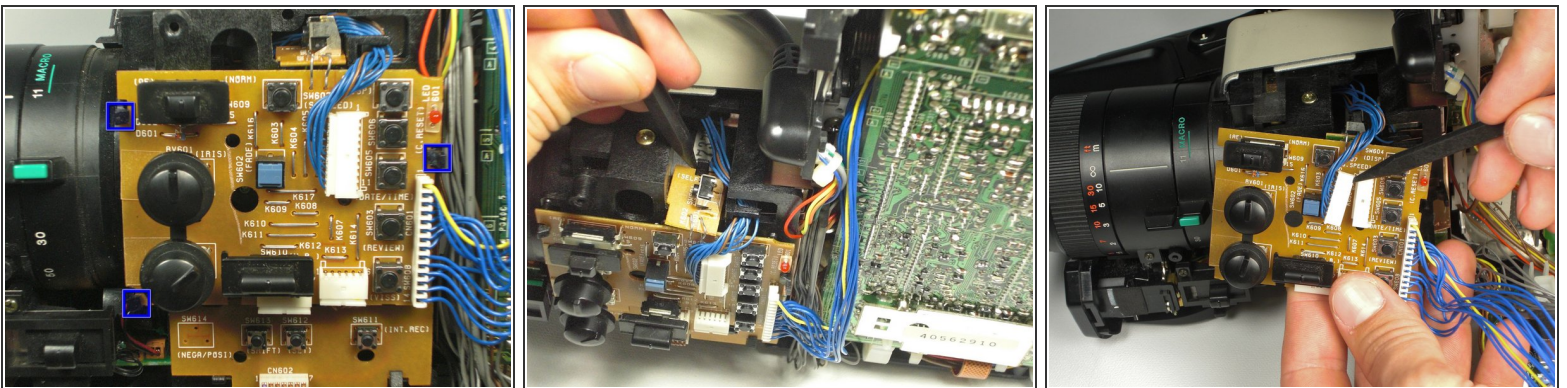


## Step 5 — Effect Button Circuit Board



- Unplug the two cables on the bottom of the effect button circuit board.
- Unplug the cable at the top left side of the mother board.

## Step 6



- Pull the plastic tabs away from the circuit board.
- Pull the board away from the camcorder.
- Use a spudger to help push the mini-circuit board away from the camcorder at the same time.
- Unplug the cable in the middle of the effects board.

To reassemble your device, follow these instructions in reverse order.