



# RCA CC310 Onboard Speaker Replacement

Replacing the onboard speaker for the RCA CC310.

Written By: Oliver Adams



---

# INTRODUCTION

Replacing the onboard speaker for the RCA CC310.

---



## TOOLS:

- [Phillips #0 Screwdriver](#) (1)
  - [Phillips #1 Screwdriver](#) (1)
  - [Spudger](#) (1)
-

## Step 1 — Disassembling RCA CC310 Left Cover



- Remove the six 7.9mm Phillips #0 screws on the back and bottom.
- Remove the one 3.8mm Phillips #0 screw on the bottom.
- Remove the two 7.5mm Phillips #0 screws on the back and bottom.



## Step 2



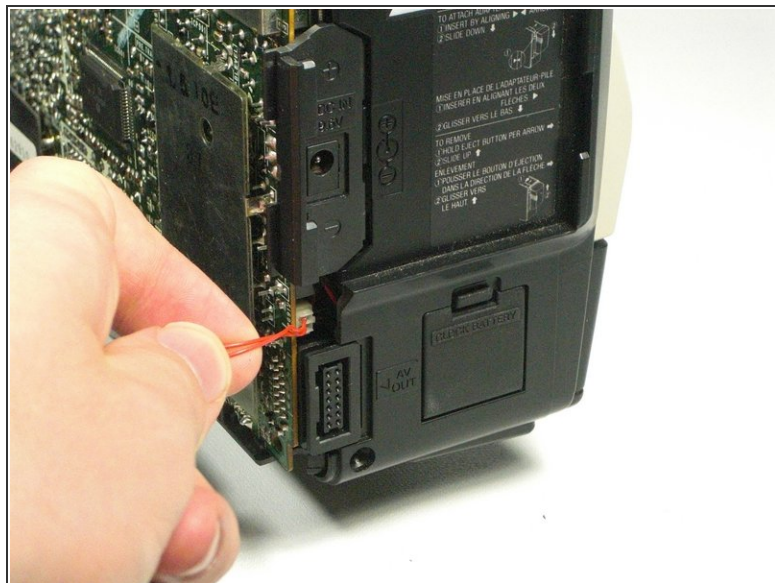
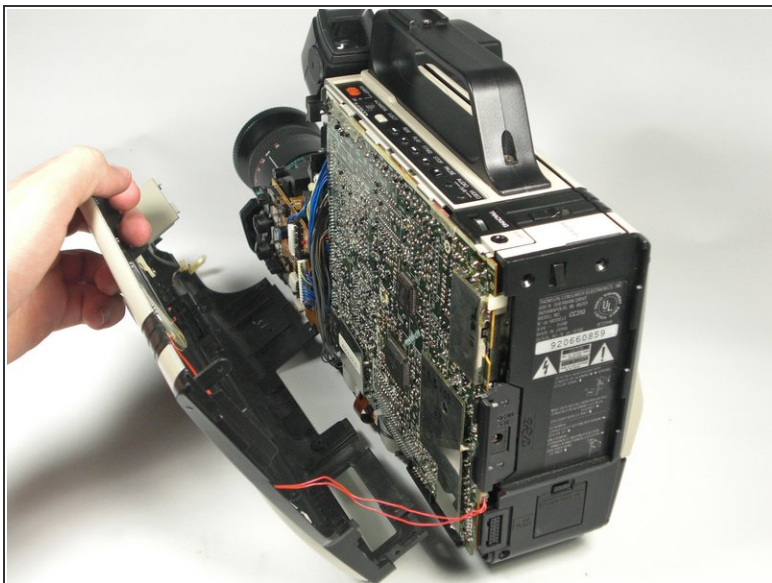
- Remove 5.8mm Phillips #1 screw from the side button panel.
- Slide the viewfinder all the way to the right and remove the 7.9mm Phillips #0 screw.

## Step 3



- Pry along the seam on the top side near the buttons with a spudger.

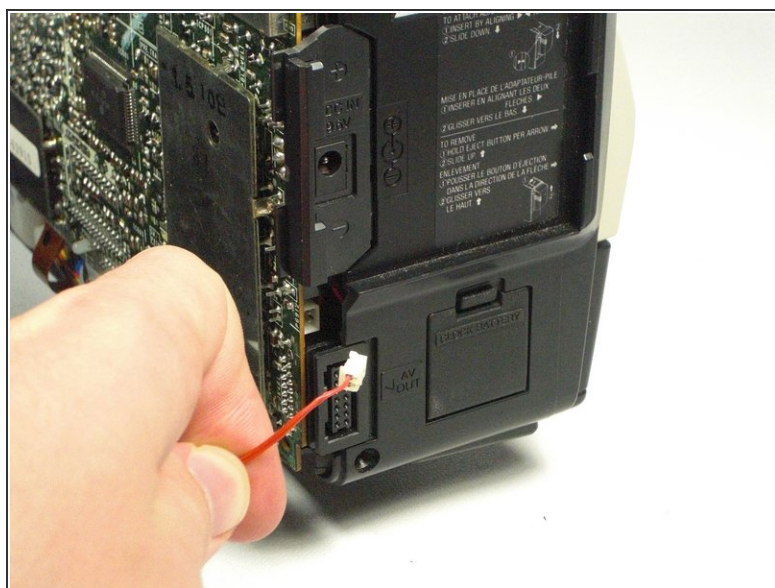
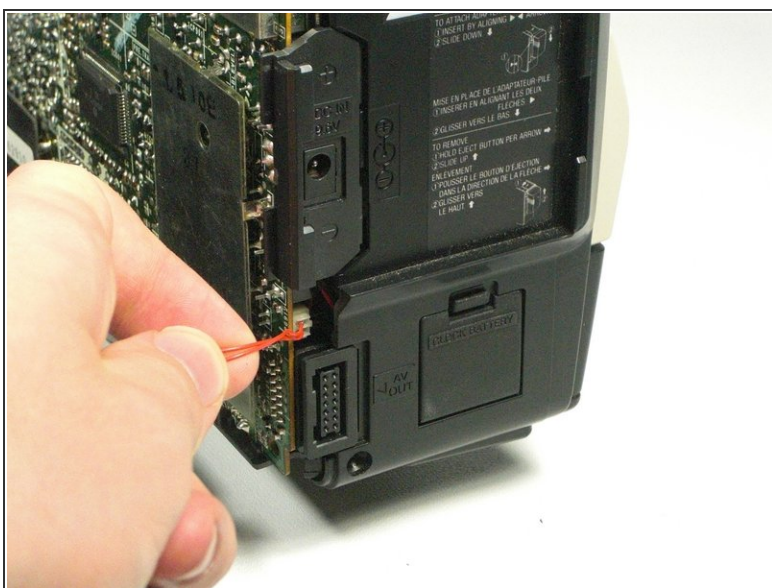
## Step 4



- Pull the left panel away from the rest of the camcorder.
- Unplug the red speaker cable located at the rear of the device.

⚠ Be careful to not pull too hard. The speaker cable is still connected to the panel and it can rip.

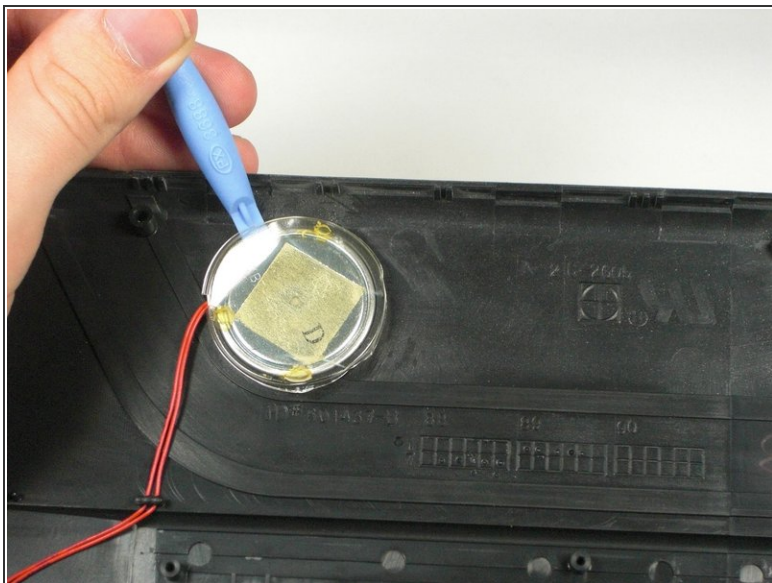
## Step 5 — Onboard Speaker



- Unplug the red cable connecting the speaker to the motherboard.

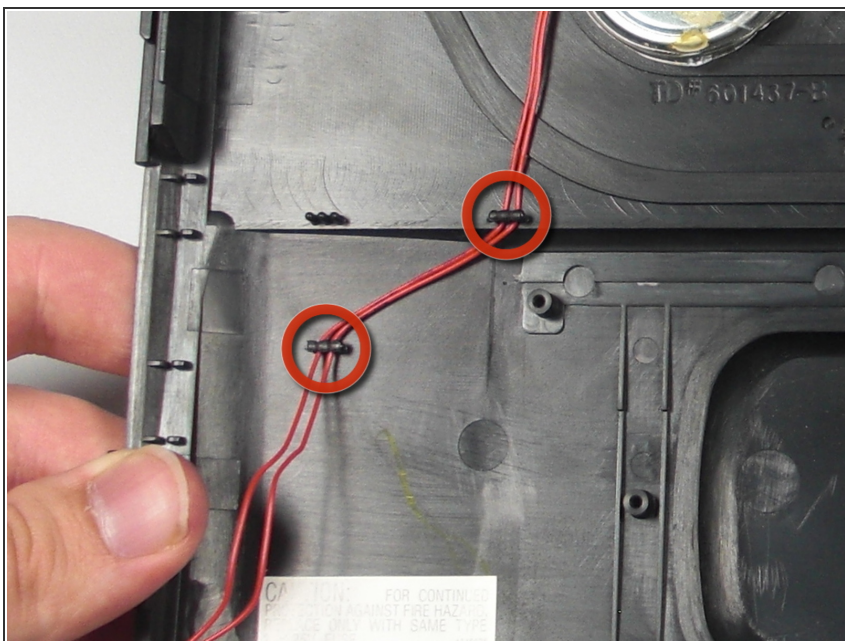


## Step 6



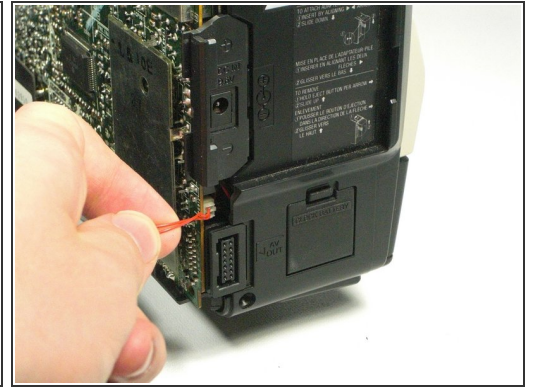
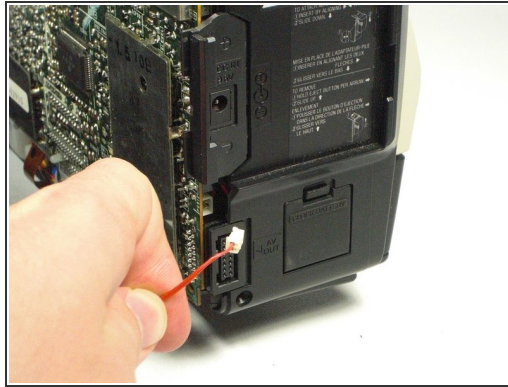
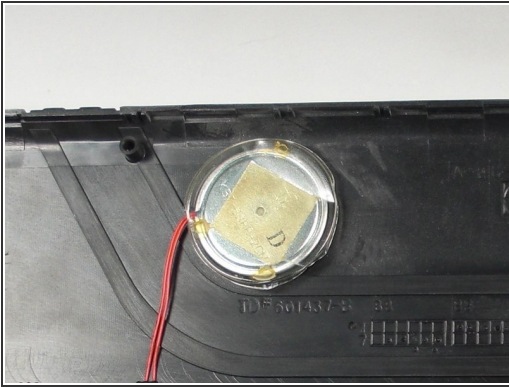
- Locate the speaker on the removed panel. Find the groove on the top left side of the speaker.
- Pry the plastic up with a spudger until the glue breaks and the speaker is detached.

## Step 7



- Break the plastic pieces holding the cable to the panel.
- ⓘ Glue the new cables, with a hot glue gun, back to the panel after replacing the speaker.

## Step 8



- Glue the new speaker to the panel.
- Plug the cable back into the motherboard.

To reassemble your device, follow these instructions in reverse order.