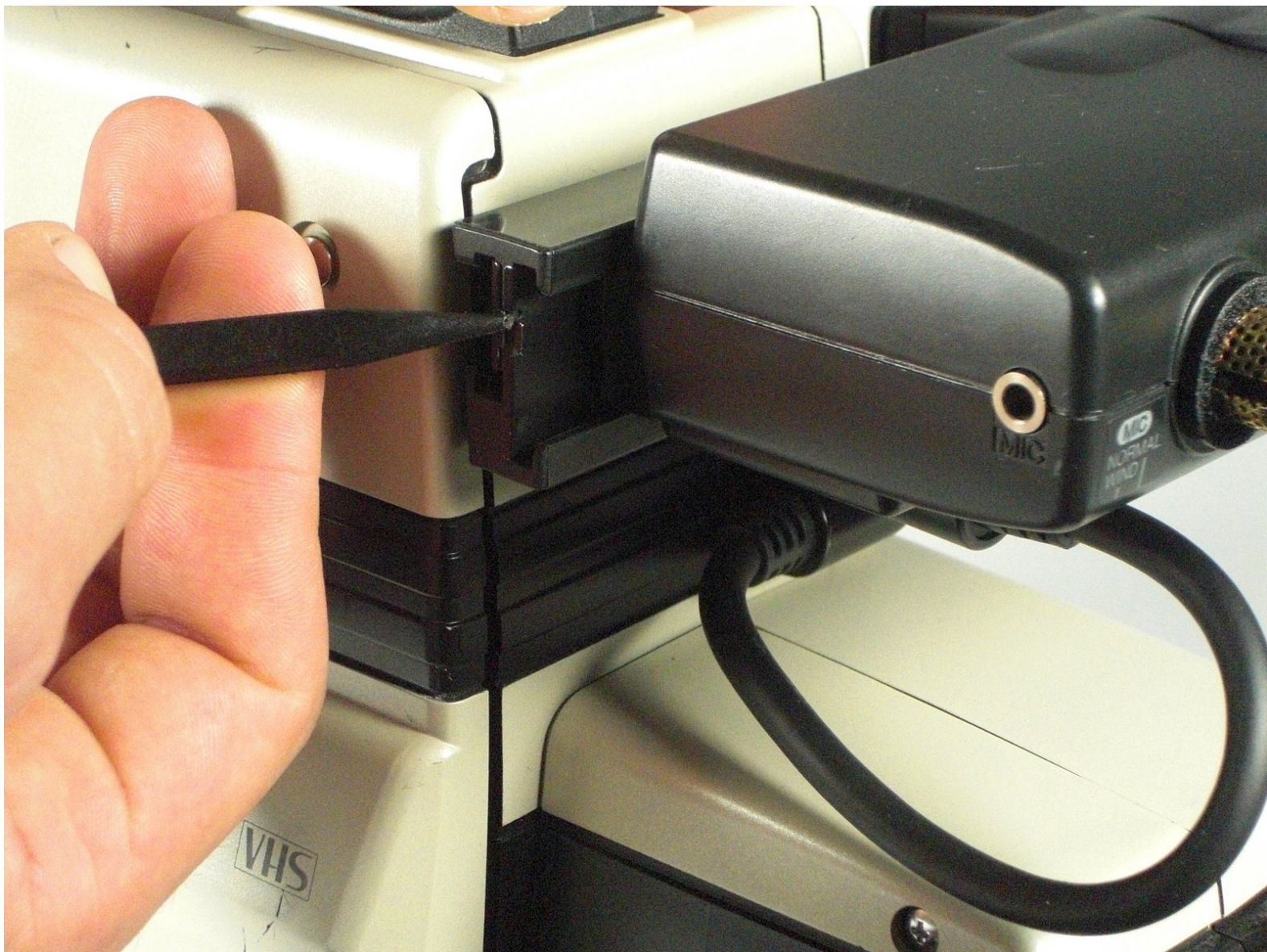




RCA CC310 Viewfinder Replacement

This guide will instruct on how to replace a malfunctioning Viewfinder assembly on the RCA CC310.

Written By: Oliver Adams



INTRODUCTION

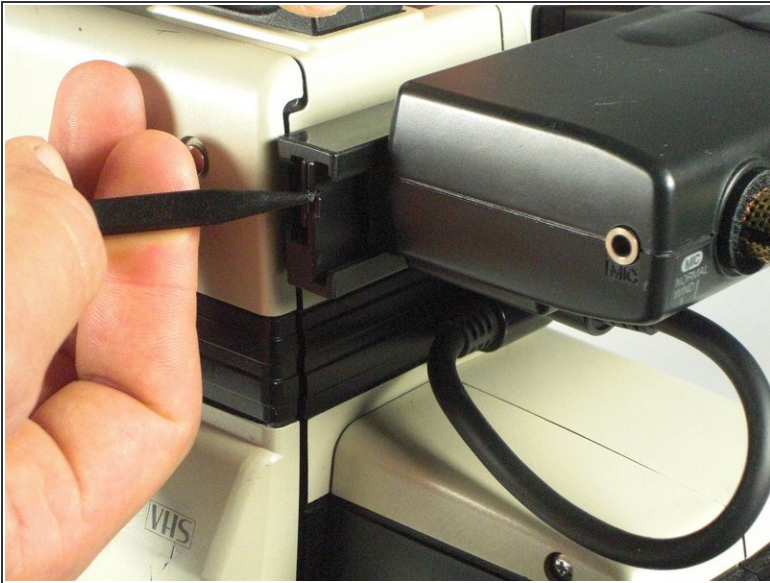
This guide will instruct on how to replace a malfunctioning Viewfinder assembly on the RCA CC310.



TOOLS:

- [Phillips #0 Screwdriver](#) (1)
 - [Spudger](#) (1)
-

Step 1 — Viewfinder



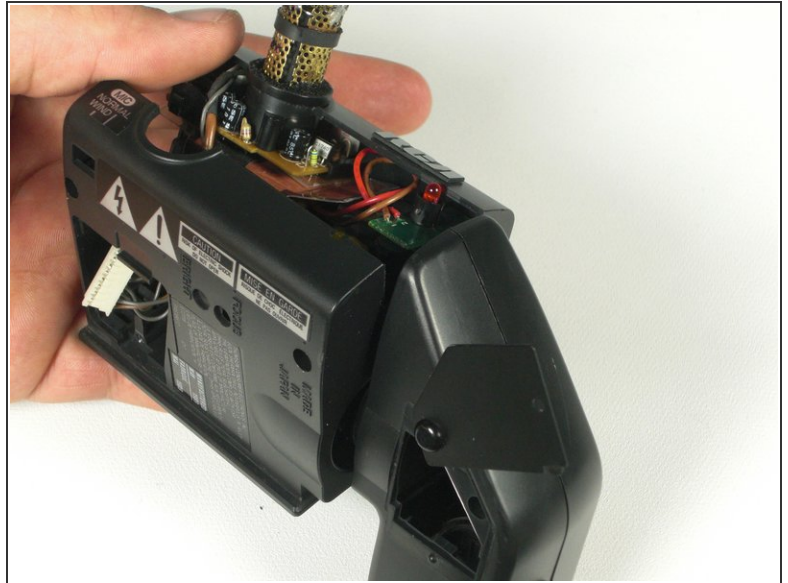
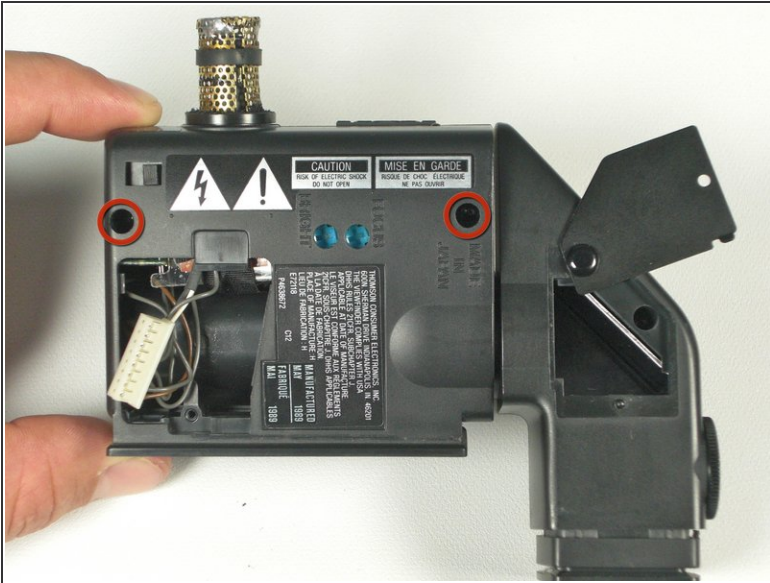
- Slide a spudger between the plastic rail and the metal tab on the left side of the rail. Push away from the camcorder to release the flap.
- ⓘ Pushing the viewfinder assembly to the right makes lifting the flap easier.
- Slide the lifted flap towards the viewfinder assembly until the viewfinder is free from the rail.

Step 2



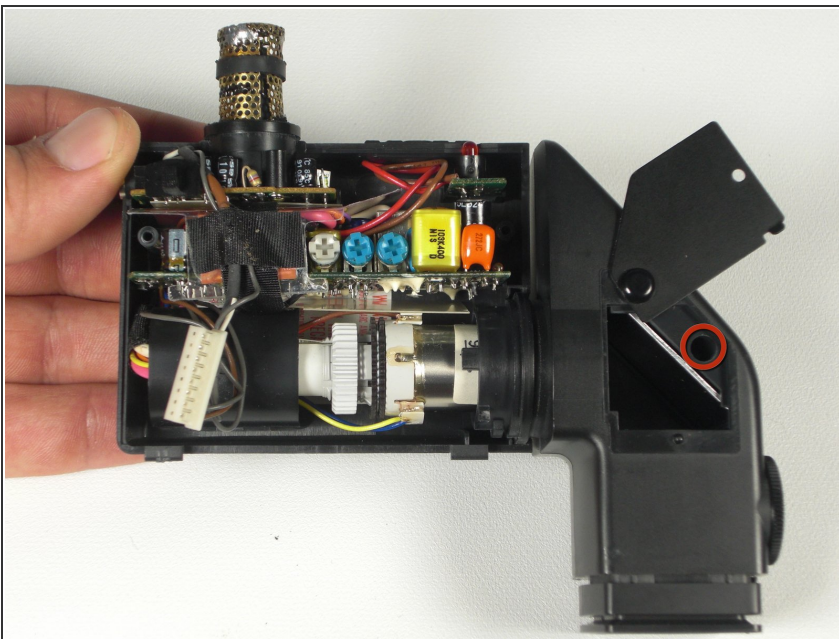
- Unscrew the 7mm ph#0 screw on the underside where the cable connects.
- Lift the plastic where the cable connects off of the viewfinder assembly.
- Disconnect the cable inside by pulling it apart.

Step 3



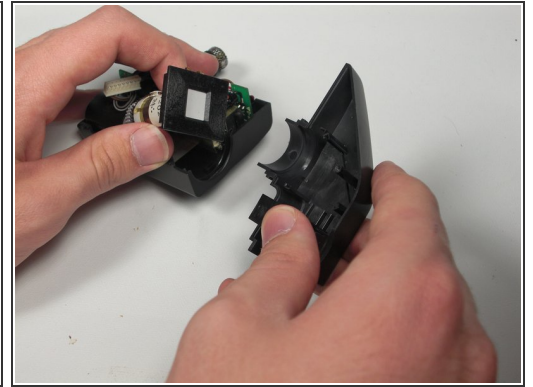
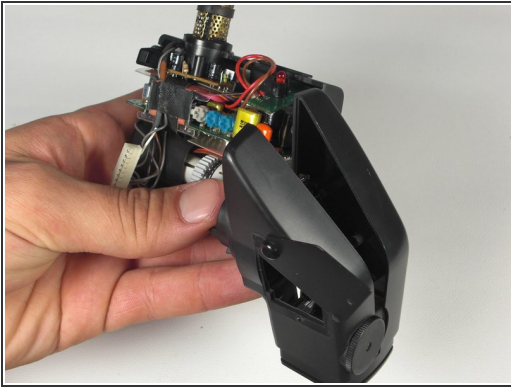
- Unscrew two 7.0mm ph#0 screws on the underside of the viewfinder assembly.
- Lift the viewfinder plastic assembly up and remove.

Step 4



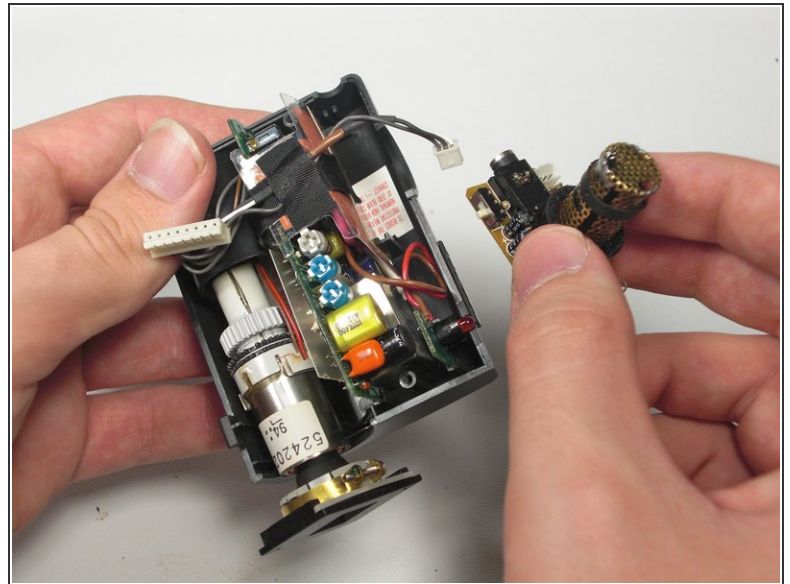
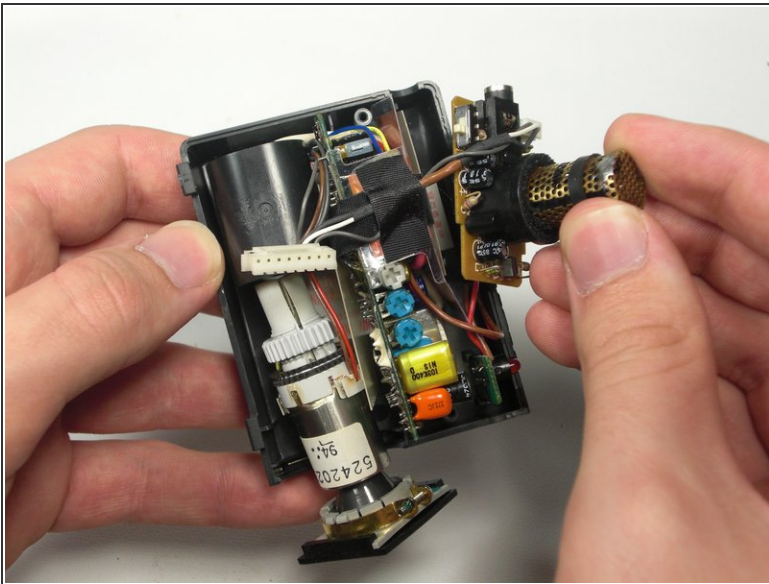
- Flip back the viewfinder access tab.
- Unscrew the 7.0mm ph #0 screw next to the mirror.

Step 5



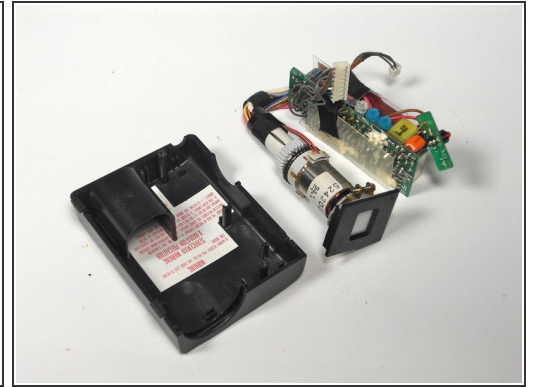
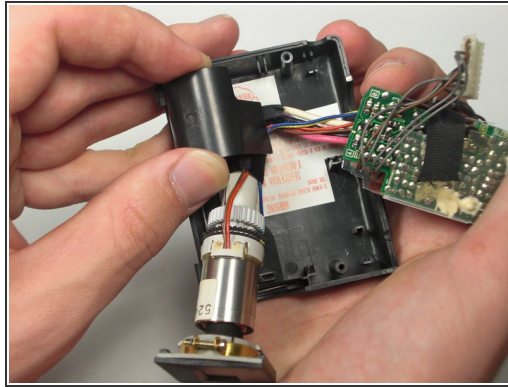
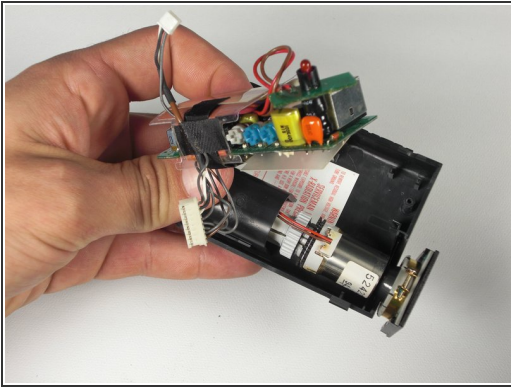
- Lift off both sides of the plastic assembly.
- ⓘ When reassembling, if the housing doesn't connect properly, try turning the focus wheel.

Step 6



- Lift the microphone circuit board straight up.
- Unclip the cable connected to the circuit board.

Step 7



- Lift plastic housing and guide the wires from underneath.
- Lift out the entire circuit board and viewfinder.
- Replace entire circuit board and viewfinder assembly.

To reassemble your device, follow these instructions in reverse order.