



RCA Pro10 Edition Battery Replacement

If your device will no longer hold a charge, you may need to replace the battery. This guide will help you locate the battery and successfully replace it.

Written By: Dayne Russell



INTRODUCTION

Outline what you are going to teach someone how to do.



TOOLS:

- [Plastic Cards](#) (1)
 - [iFixit Opening Tools](#) (1)
-

Step 1 — Speaker



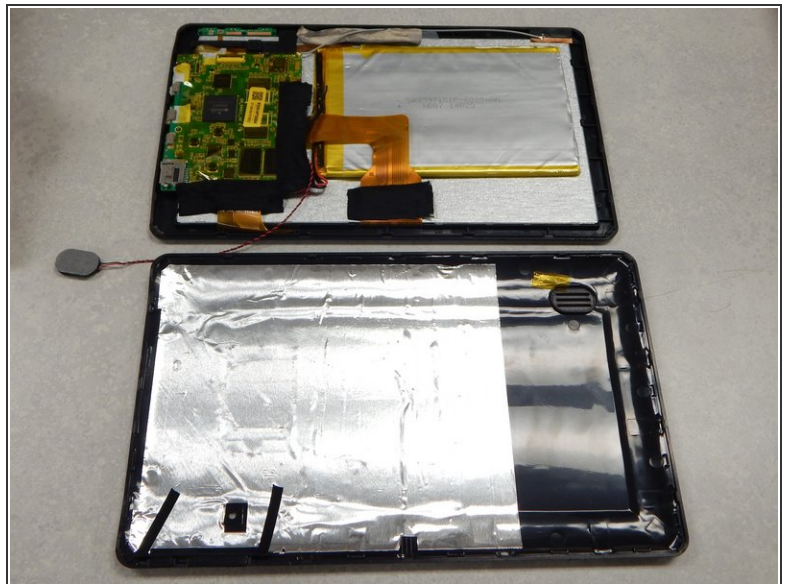
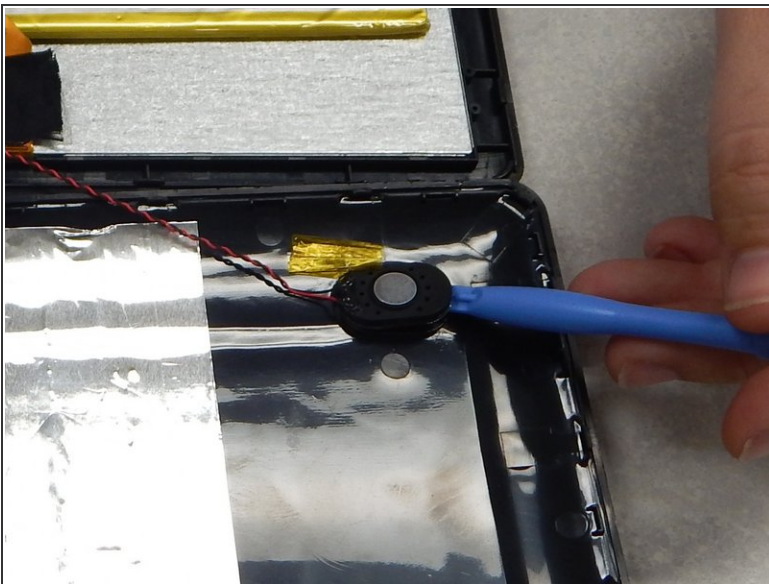
- Using a separating tool, look for a seam in the plastic casing that looks most accessible.
- Use the prying tool to separate the front and back casing, working your way around the perimeter.
- Utilize a card tool or a pick to assist in keeping the case separated.
- ☑ To reassemble the device simply align the two casing halves and pinch to snap together or press down on the edges while the device is on a table.

Step 2



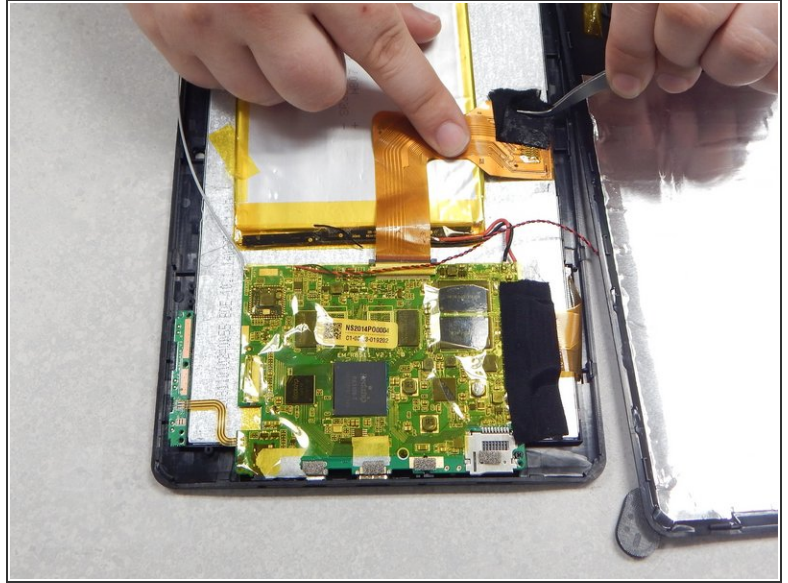
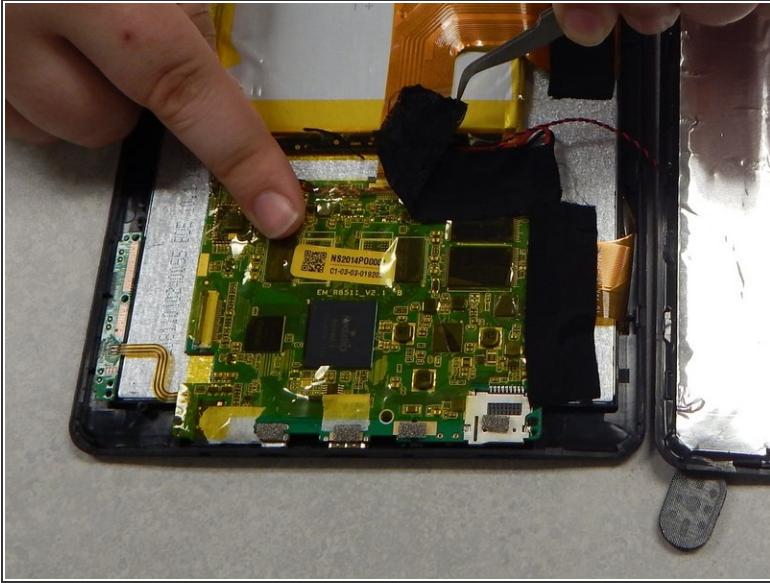
- Flip over the back of the device while keeping it close to the front, the speaker is attached to it.
- Remove the yellow tape securing the speaker to the back casing.

Step 3



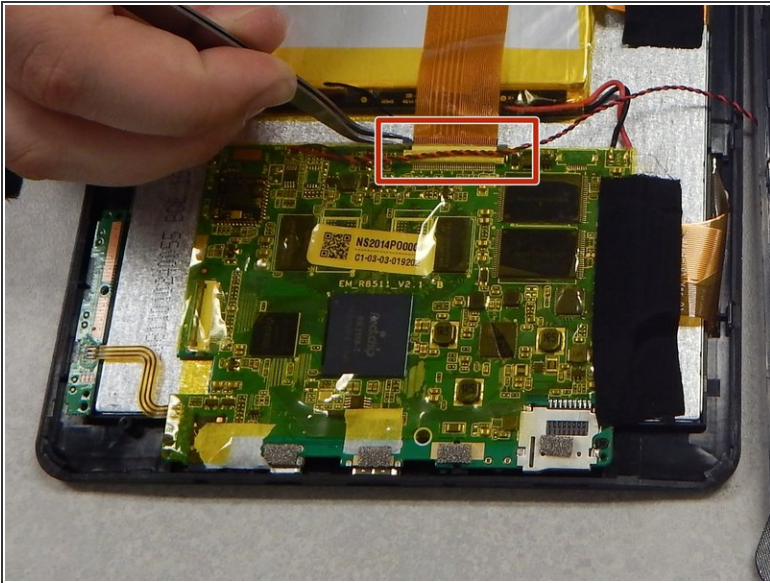
- Use the separating tool to pry the speaker from its surface.
 - ⚠ Use caution when removing the speaker, you may damage the screen.
- Cut or desolder the wires to replace or repair the speaker.

Step 4 — Battery



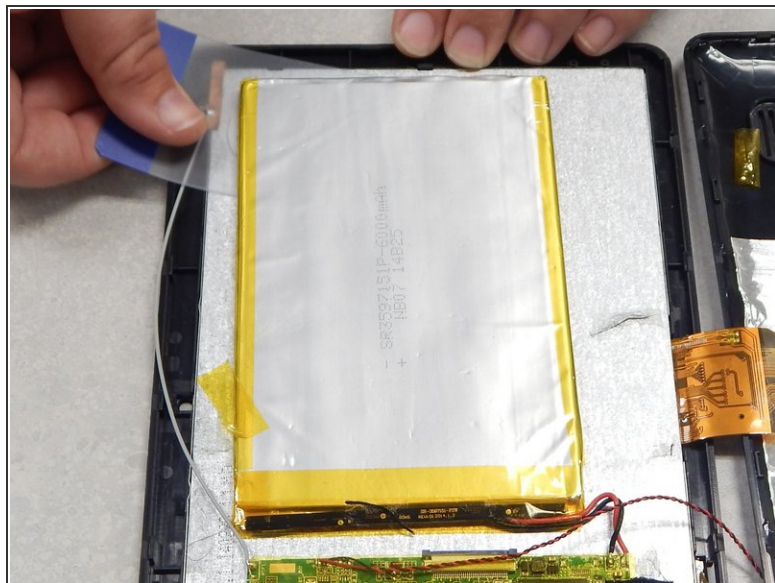
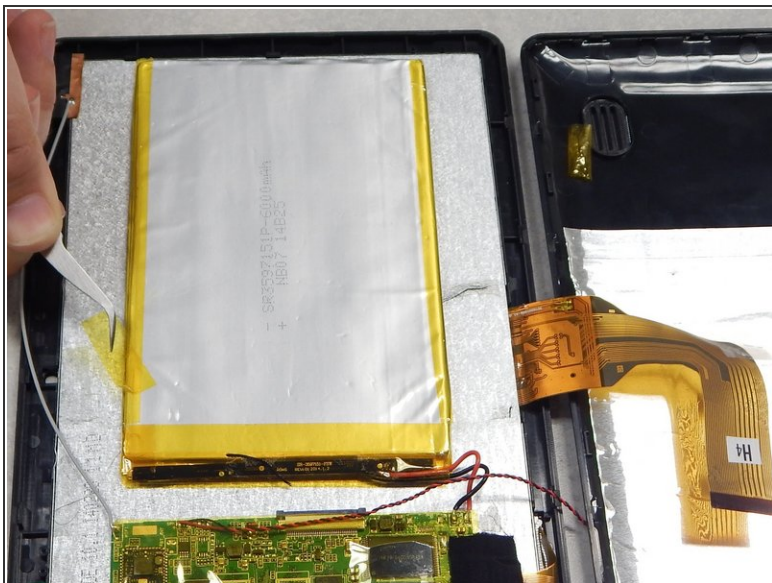
- Peel off the black tape on the battery and main-board.
 - Peel off the black tape securing the screen ribbon cable to the back of the screen.
- ⚠ Use caution to avoid damaging either ribbon cable.

Step 5



- Slide out the ribbon cable lock that is securing the screen ribbon cable.
- Move the ribbon cable out of the way using tape if necessary.

Step 6



- Remove the yellow tape securing the battery to the screen.
- Use a plastic card or pick to separate the battery from the screen.
 - ⚠ Do not bend or puncture battery, battery is difficult to separate from screen.
- Cut or desolder the wires on the battery to remove or replace it.

To reassemble your device, follow these instructions in reverse order.