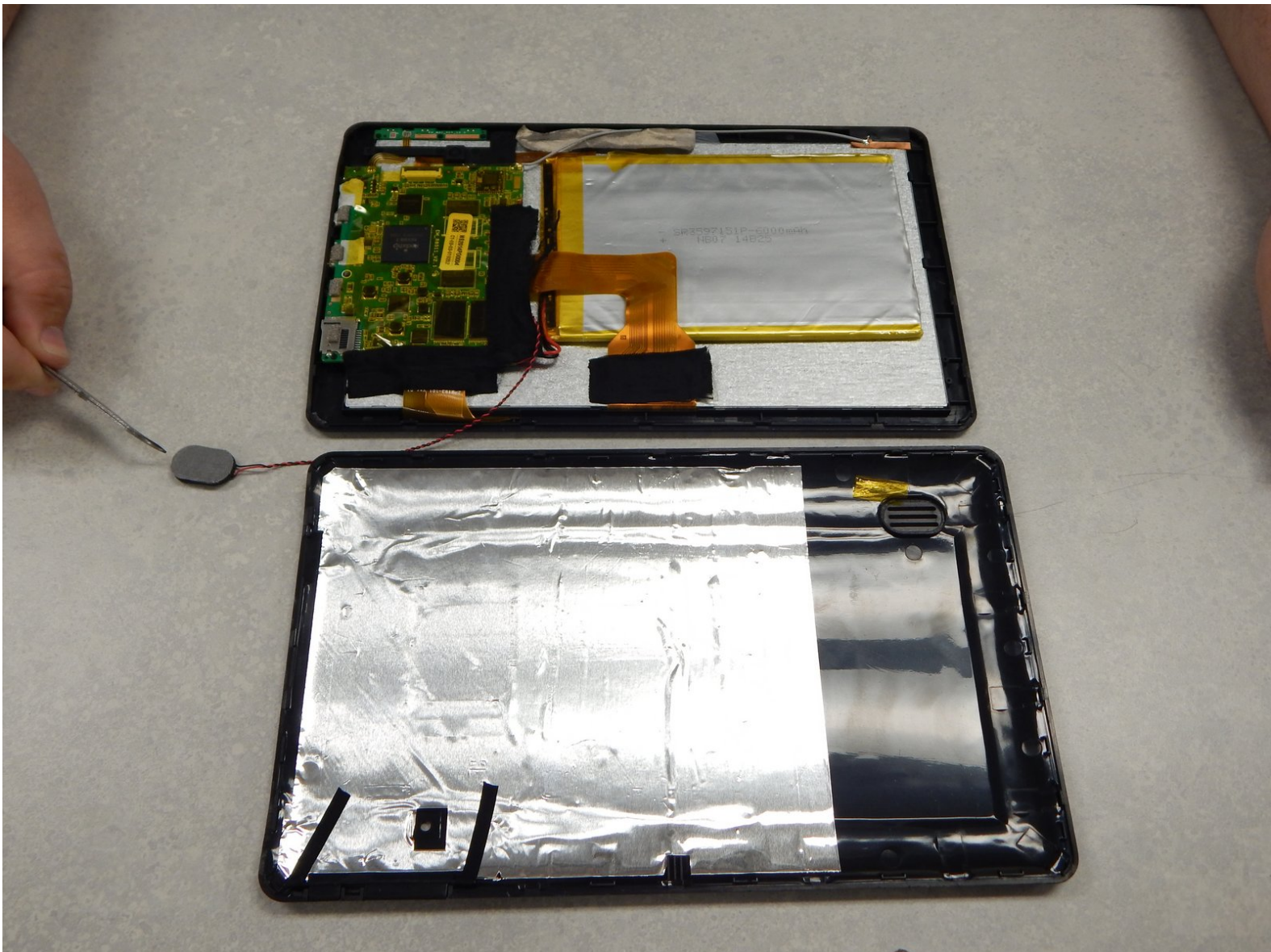




RCA Pro10 Edition Speaker Replacement

If audio is not playing or you are hearing odd noises, you may need to replace the speaker.

Written By: Dayne Russell



INTRODUCTION

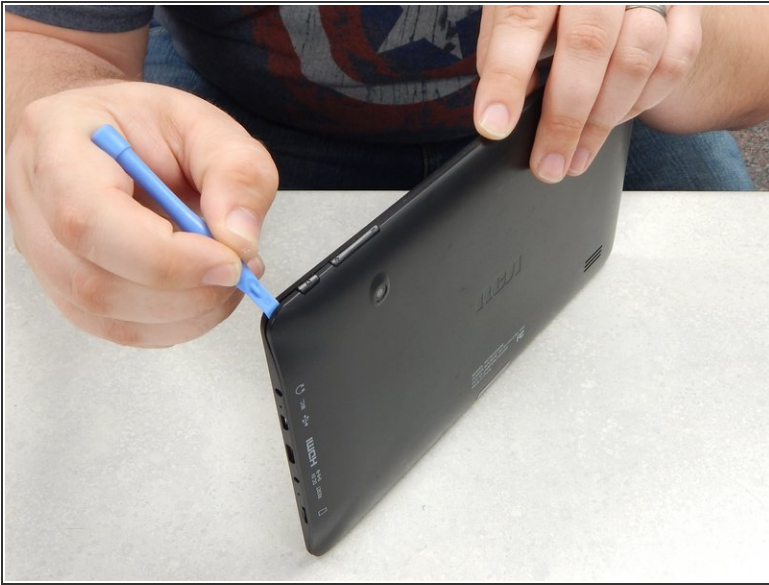
This guide will serve as a step-by-step guide for speaker replacement.



TOOLS:

- [iFixit Opening Tools](#) (1)
 - [Plastic Cards](#) (1)
-

Step 1 — Speaker



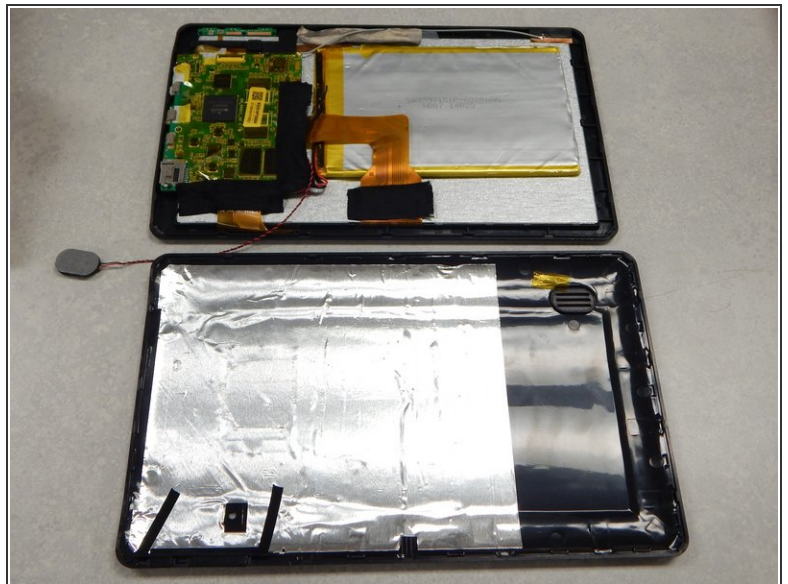
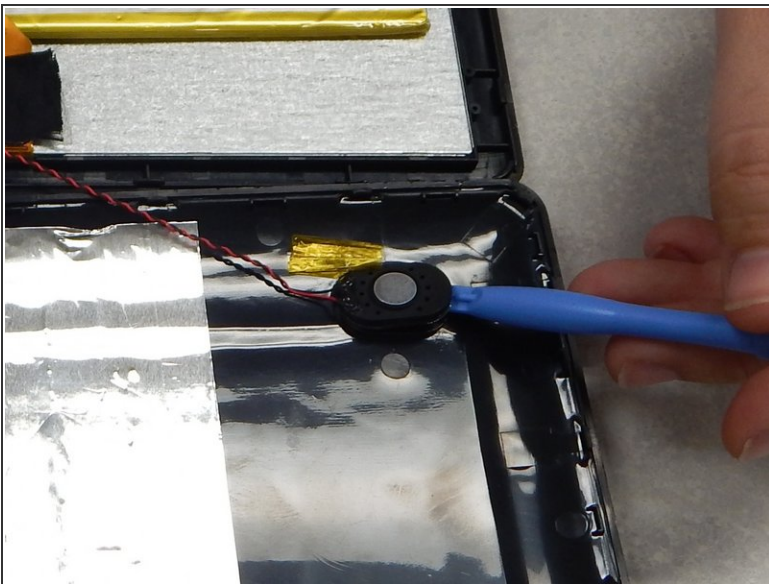
- Using a separating tool, look for a seam in the plastic casing that looks most accessible.
- Use the prying tool to separate the front and back casing, working your way around the perimeter.
- Utilize a card tool or a pick to assist in keeping the case separated.
- ☑ To reassemble the device simply align the two casing halves and pinch to snap together or press down on the edges while the device is on a table.

Step 2



- Flip over the back of the device while keeping it close to the front, the speaker is attached to it.
- Remove the yellow tape securing the speaker to the back casing.

Step 3



- Use the separating tool to pry the speaker from its surface.
 - ⚠ Use caution when removing the speaker, you may damage the screen.
- Cut or desolder the wires to replace or repair the speaker.

To reassemble your device, follow these instructions in reverse order.