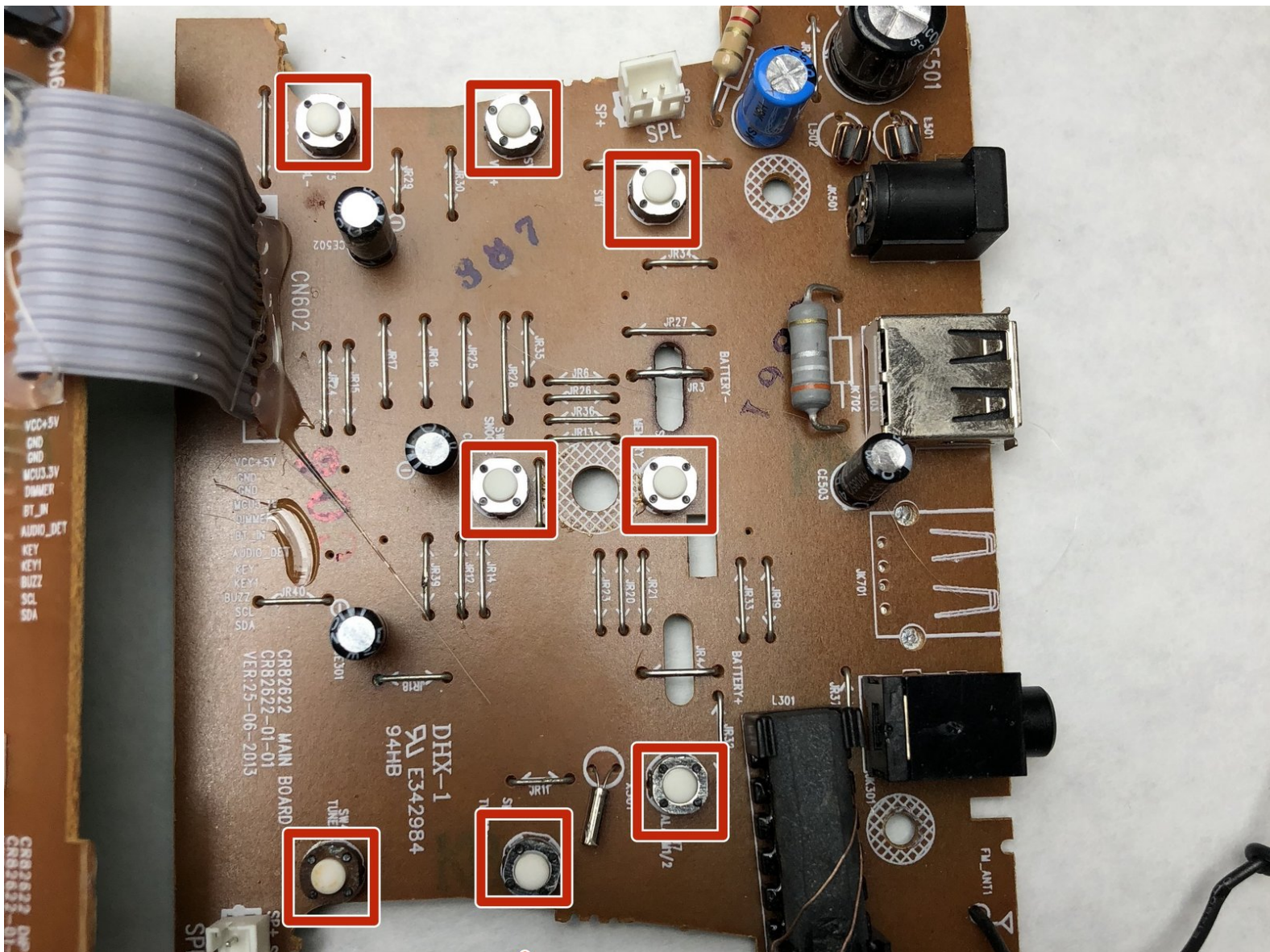




Written By: Josh Excell



Page 1 of 6

INTRODUCTION

This guide will show how to replace buttons on the RCA RCR8622.



TOOLS:

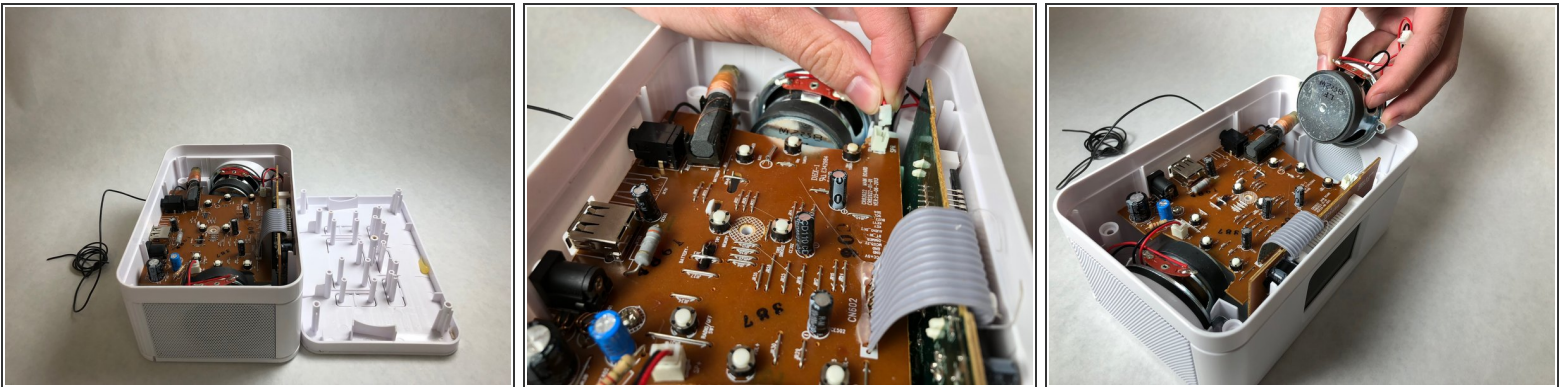
- [Phillips #1 Screwdriver](#) (1)
 - [Phillips #0 Screwdriver](#) (1)
 - [Tweezers](#) (1)
 - [Soldering Iron](#) (1)
-

Step 1 — Speaker



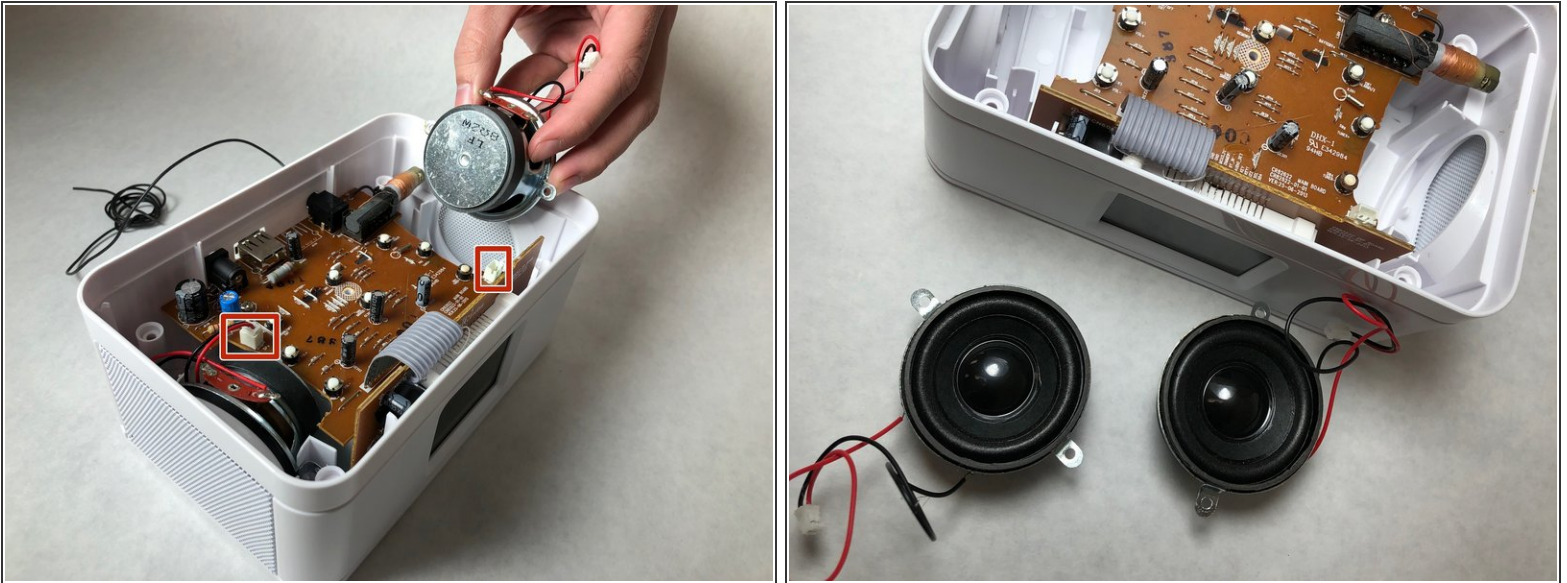
- Remove the casing. Slide the plastic cover with the graphic off the main base. Be careful and hold both sides.
- Flip the device over and unscrew the five 11 mm screws with a Phillip's #1 screwdriver.
 - ⓘ A magnetic screwdriver will help you remove the screws from their slots.

Step 2



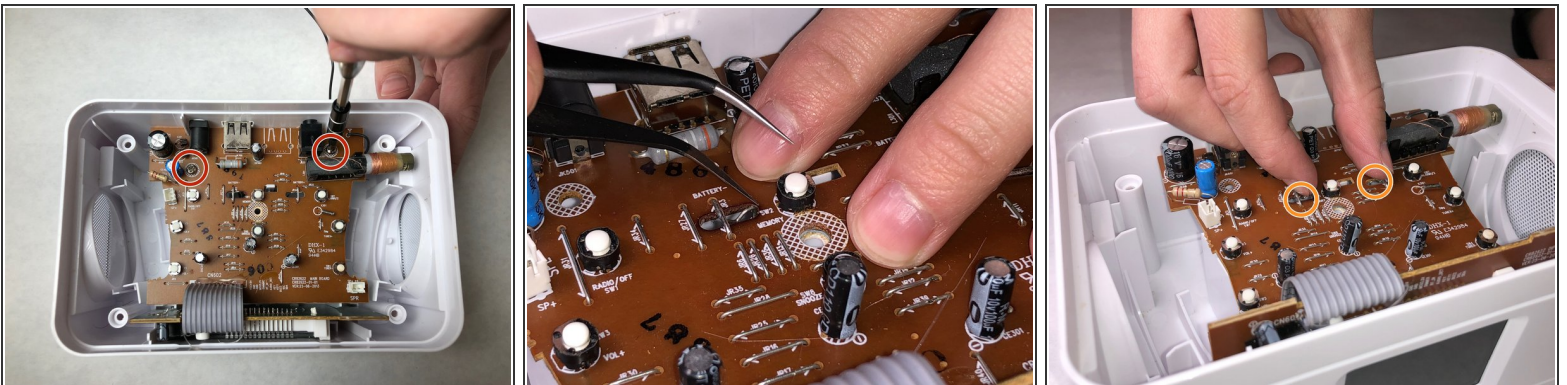
- Pull the top of the device off and look closely at the motherboard. You will see two speakers, one on each side of the device.
- Grab the tweezers and follow the red and black wires leading from the speaker to the motherboard. They will attach to a white casing. Lift the white plug out with the tweezers to disconnect.

Step 3



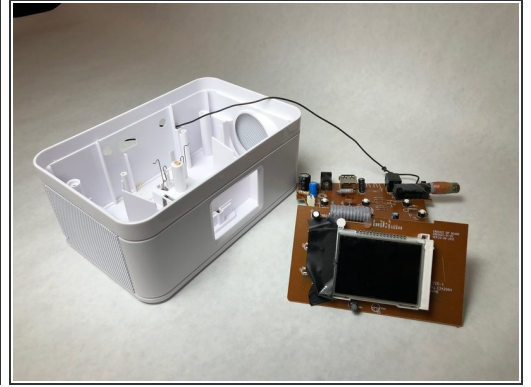
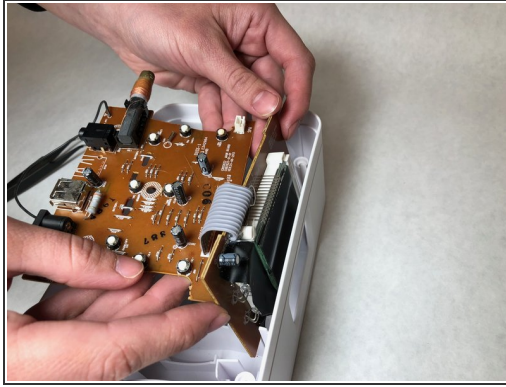
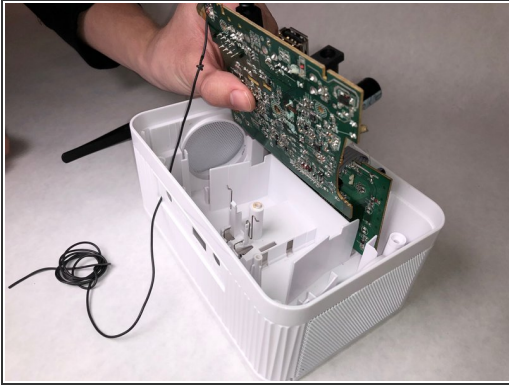
- Grab the speaker and pull upward. The Speakers will be loose.
- ⓘ Repeat this step with the other speaker.

Step 4 — LCD Screen



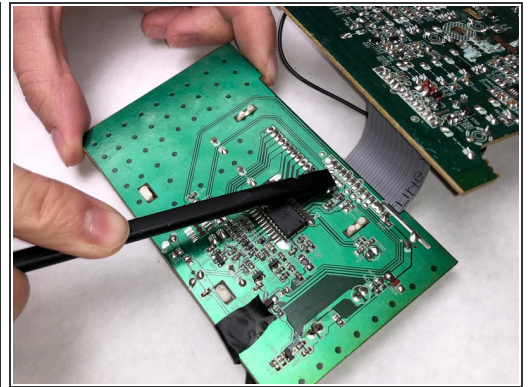
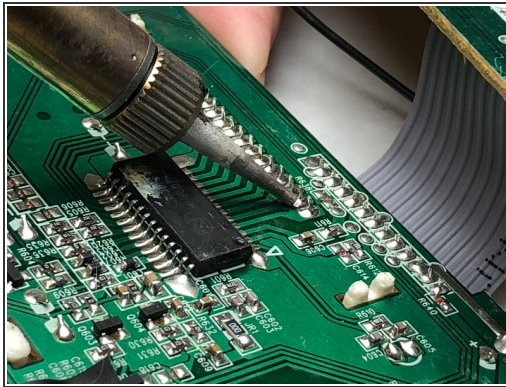
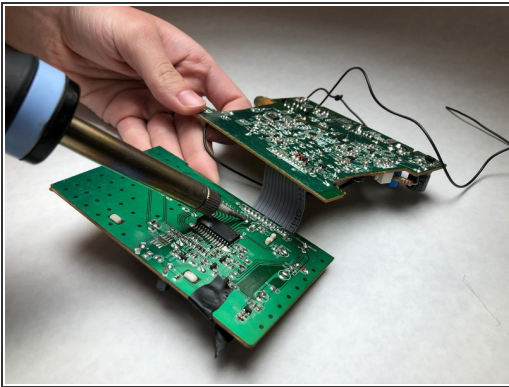
- Remove the two 11mm screws from the motherboard with the Phillip's #1 screwdriver.
- Squeeze the 2 metal prongs on the interior of the motherboard inward until a clicking noise is heard.

Step 5



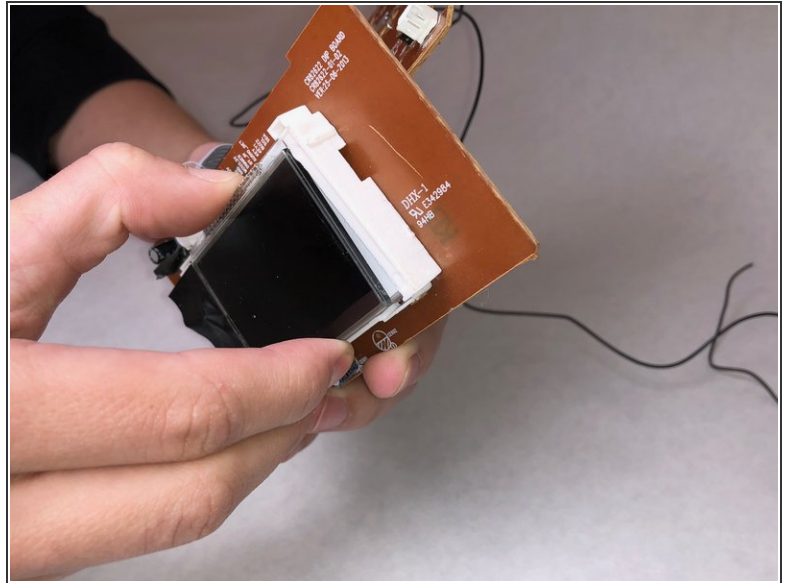
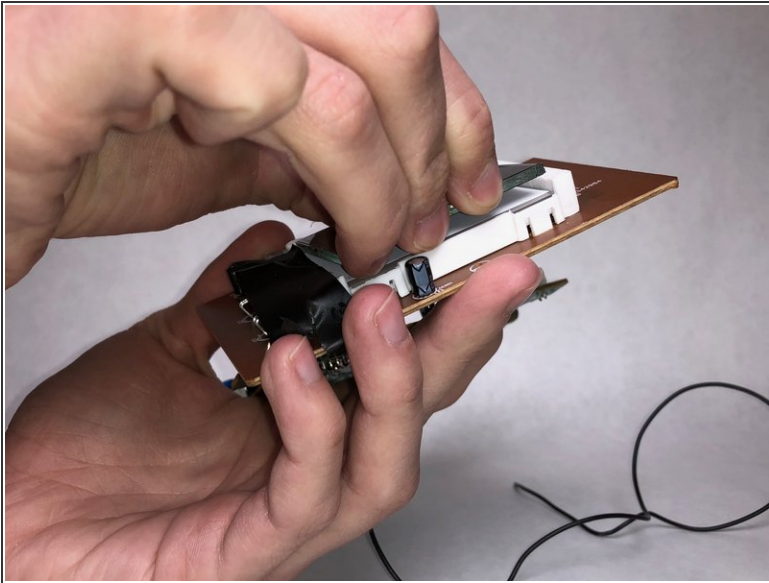
- Lift the motherboard out of the interior of the device.
 - Remove the screen section of the device by lifting upward on the circuit it is connected to by sliding it upwards.
- ☒ Both sections will be connected with a ribbon connection.

Step 6



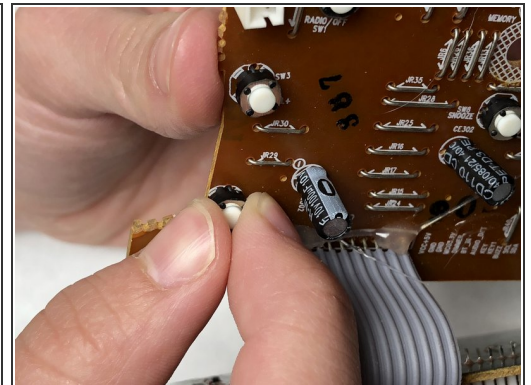
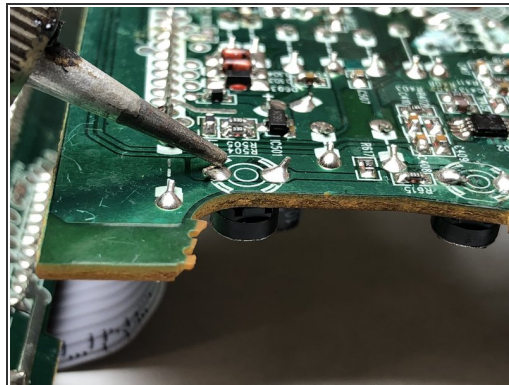
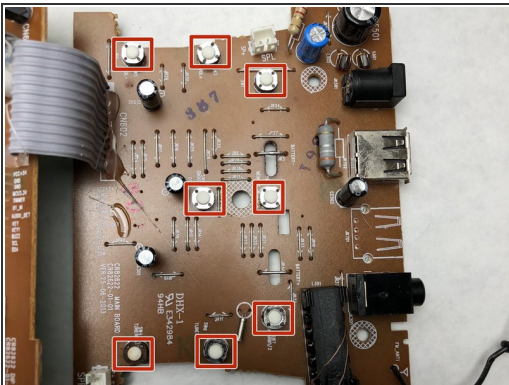
- Flip both components of the circuitry over and from the main motherboard you will see metal pins that lead to the LCD screen.
- Heat the solder around the pins with a soldering iron so the pins can be removed and the screen can be detached. Use a flat object to help push out the pins.

Step 7



- Lift the screen upward, taking care not to allow the films below it to fall out.

Step 8 — Buttons



- Identify which button needs to be changed out. There will be labels on the board indicating functionality of each button.
- Flip the board over and find the button by the circles on the board.
- Solder the 2 pins off the button and pinch the top of the button on the other side to pull off.

To reassemble your device, follow these instructions in reverse order.