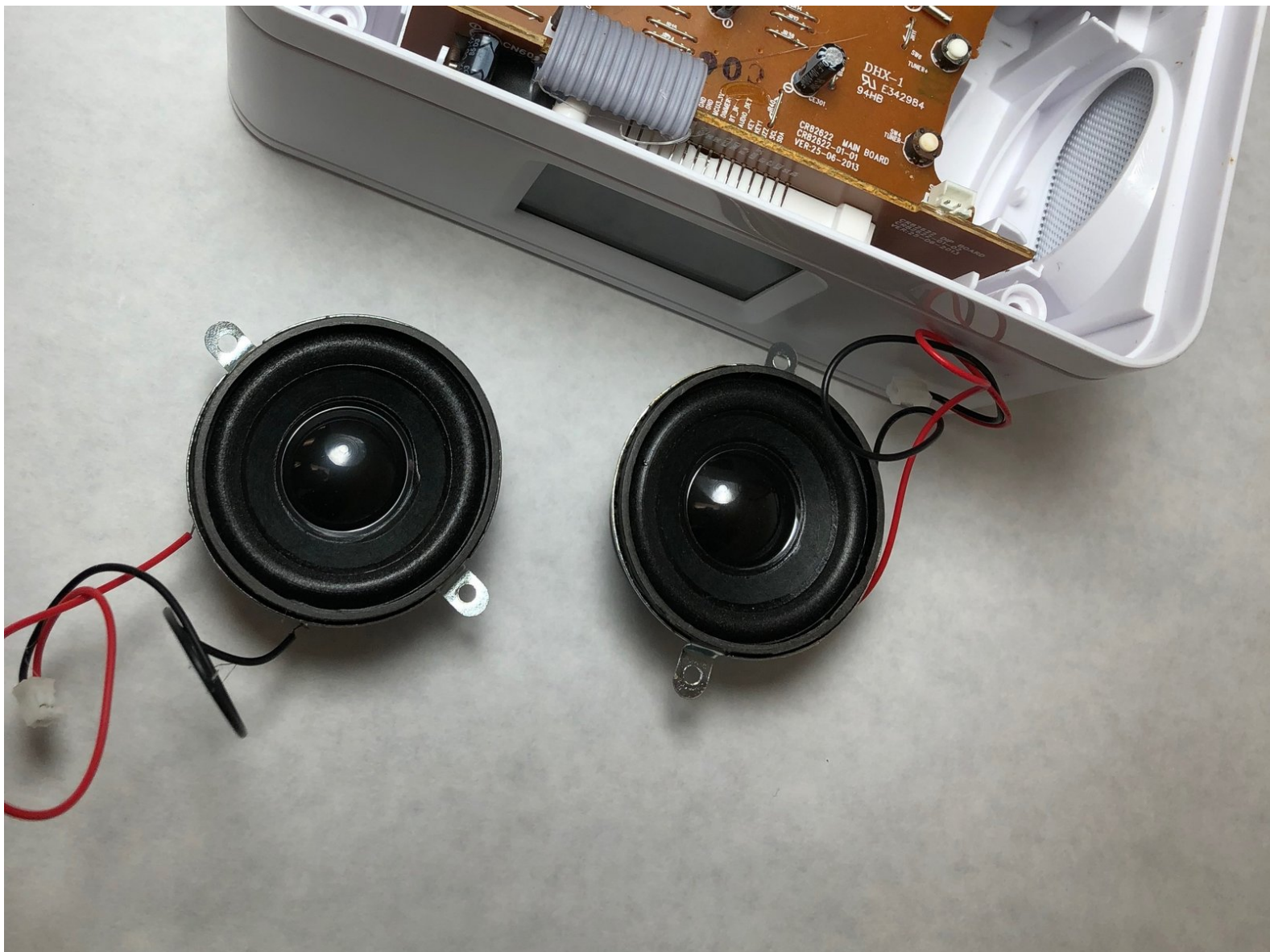




RCA RCR8622 Speaker Replacement

This guide will focus on replacing the speakers on the RCA RCR8622 in a step by step manner.

Written By: Josh Excell



INTRODUCTION

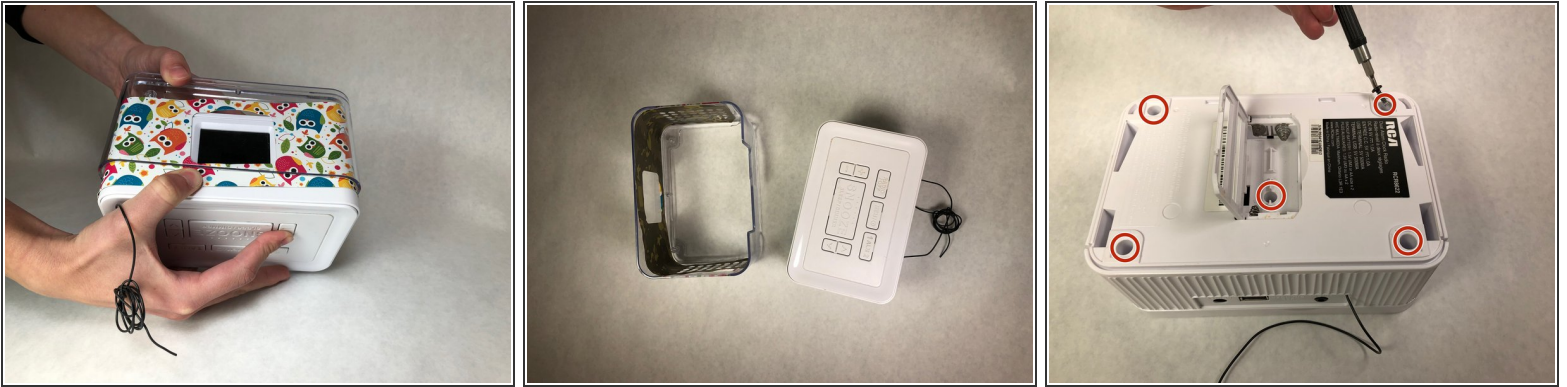
This guide will focus on replacing the speakers on the RCA RCR8622 in a step by step manner.



TOOLS:

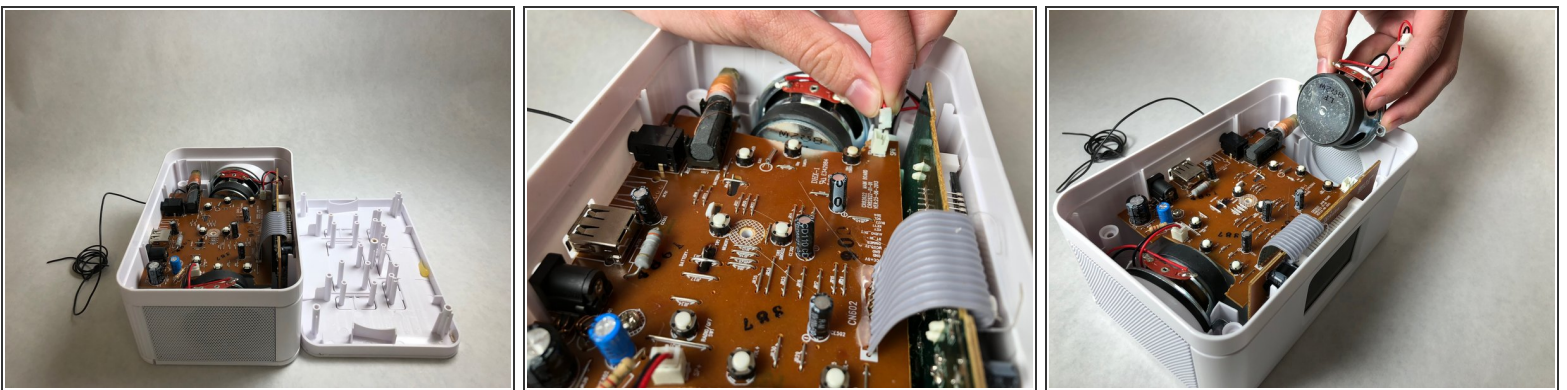
- [Tweezers](#) (1)
 - [Phillips #1 Screwdriver](#) (1)
-

Step 1 — Speaker



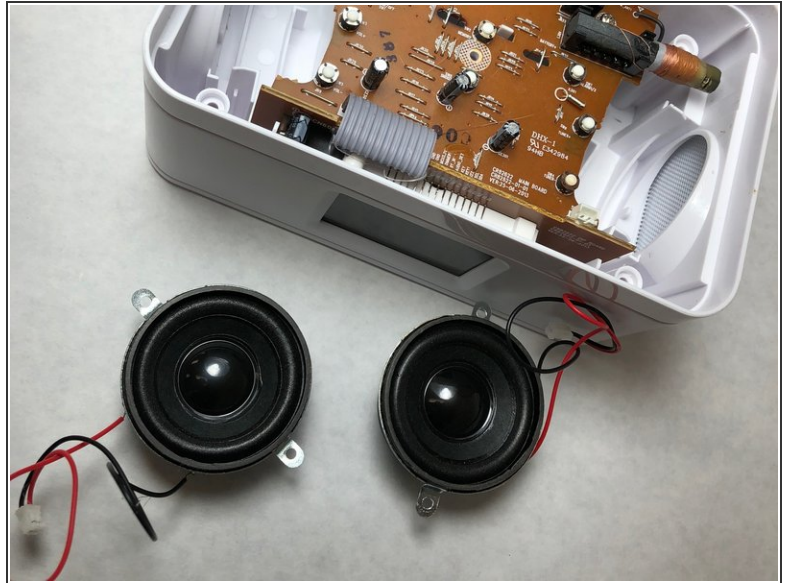
- Remove the casing. Slide the plastic cover with the graphic off the main base. Be careful and hold both sides.
- Flip the device over and unscrew the five 11 mm screws with a Phillip's #1 screwdriver.
 - ⓘ A magnetic screwdriver will help you remove the screws from their slots.

Step 2



- Pull the top of the device off and look closely at the motherboard. You will see two speakers, one on each side of the device.
- Grab the tweezers and follow the red and black wires leading from the speaker to the motherboard. They will attach to a white casing. Lift the white plug out with the tweezers to disconnect.

Step 3



- Grab the speaker and pull upward. The Speakers will be loose.
- ⓘ Repeat this step with the other speaker.

To reassemble your device, follow these instructions in reverse order.