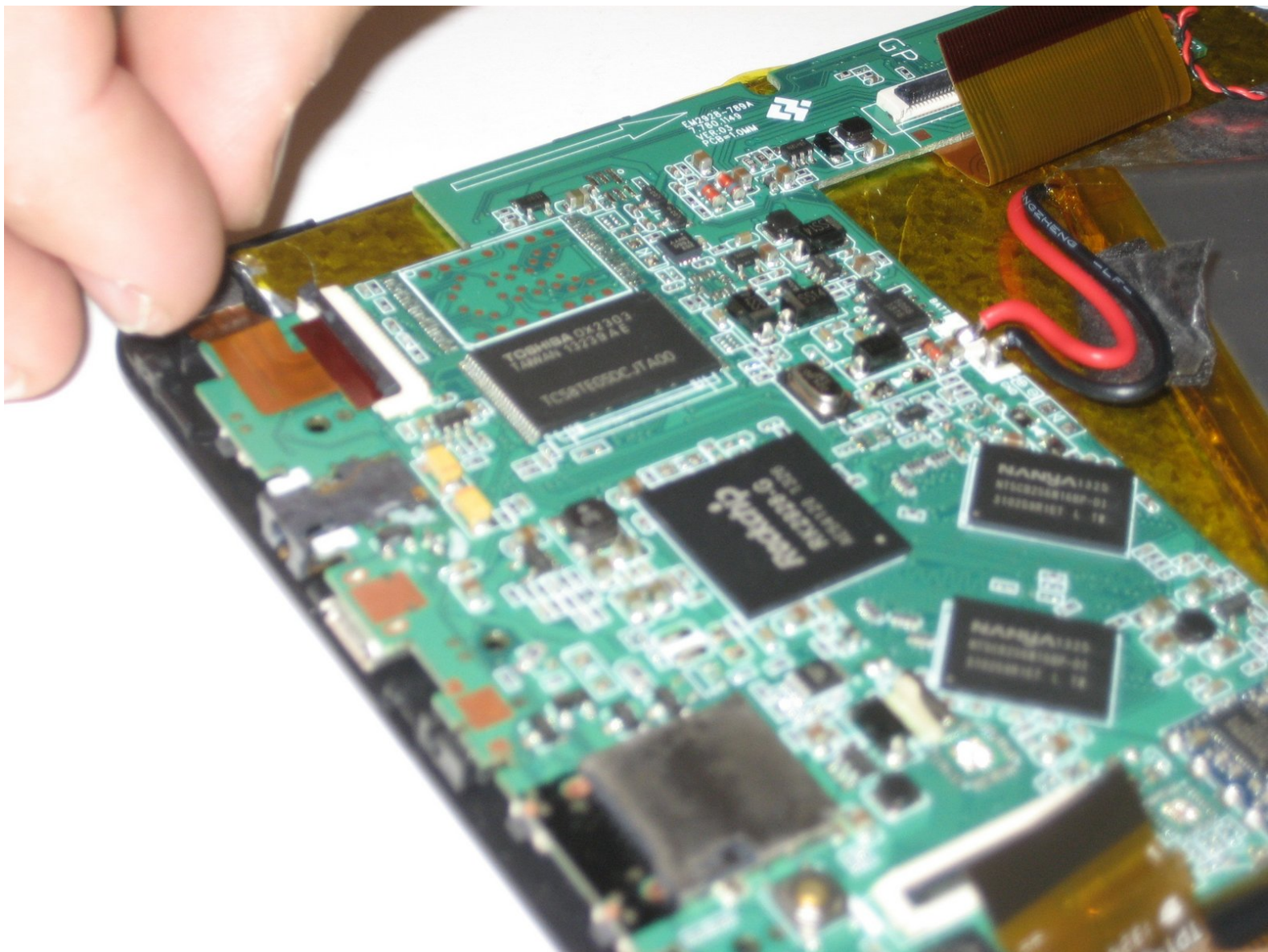




RCA RCT6077W2 Camera Replacement

The camera is attached to the motherboard of the device with a ribbon cable, and is easily replaced if malfunctioning.

Written By: Ryan Williams





TOOLS:

- [Phillips #00 Screwdriver](#) (1)
- [iFixit Opening Picks set of 6](#) (1)

Step 1 — Backplate



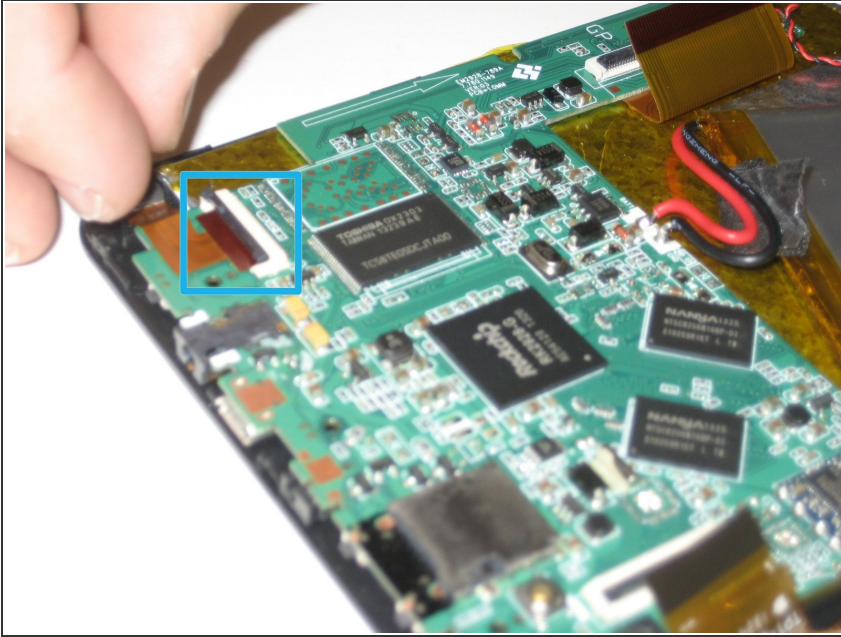
- Remove the two 2.5mm Phillips head screws before attempting to remove the screen from the device.

Step 2



- Run an opening pick around the edge of the screen to loosen it and begin to pry upward.
- When the screen comes up like it has in the photo, it should be able to simply be removed from its casing.
- ⓘ The buttons on the end of the device will be loose when you remove the screen from the backplate. Be careful not to lose them.

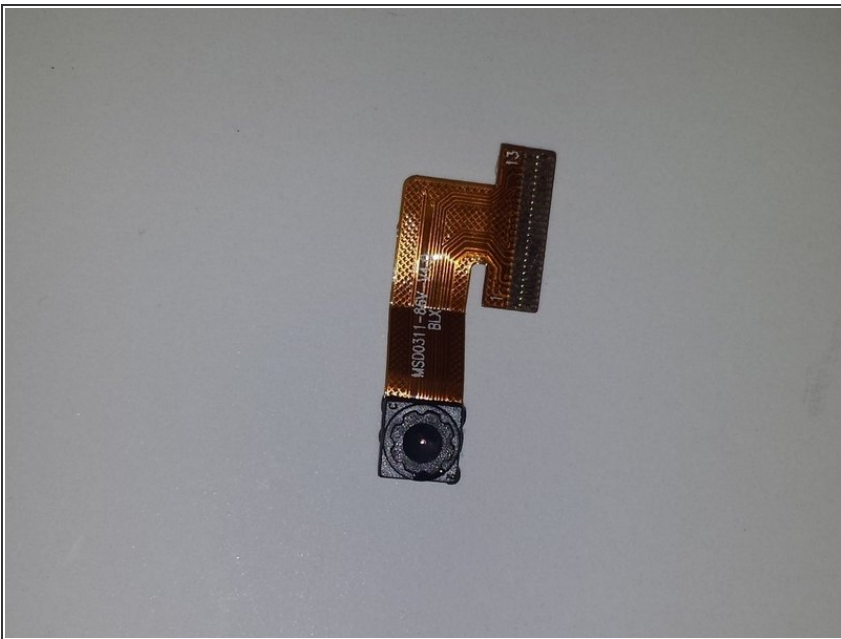
Step 3 — Camera



- The camera is located in the corner of the motherboard, attached by a ribbon cable. Lift up on the black latch that is holding in the ribbon cable and the cable should pop up and out.

⚠ Do not use force to try to remove the ribbon cable. The latch may not be lifted up completely, and force can break the ribbon cable away from its connector.

Step 4



- Once the cable is removed from the motherboard, the entire camera can simply be removed from the device.

To reassemble your device, follow these instructions in reverse order.