



# RCA RCT6203W46 Battery Replacement

This guide replaces a damaged or nonfunctional battery.

Written By: Nicholas Alexander



# INTRODUCTION

A tablet that is unable to turn on is a sign that the battery needs to be replaced. Follow this guide to replace your tablet's battery



## TOOLS:

- [Spudger](#) (1)
- [Phillips #00 Screwdriver](#) (1)
- [Soldering Iron](#) (1)




## PARTS:

- [MH49370 Battery for RCA 10 RCT6203W46](#) (1)

## Step 1 — Battery



 Make sure the device is off to reduce the chance of an electrical shock. To turn off the device, press and hold the power button.

- Use a Phillips #00 Screwdriver to unscrew the 4mm (5/32 in.) screws from the back cover of the tablet.

## Step 2



- Use a spudger to pry the back cover. Start from one edge of the back cover and slide across until the cover is lifted from the tablet body. Repeat for all edges.

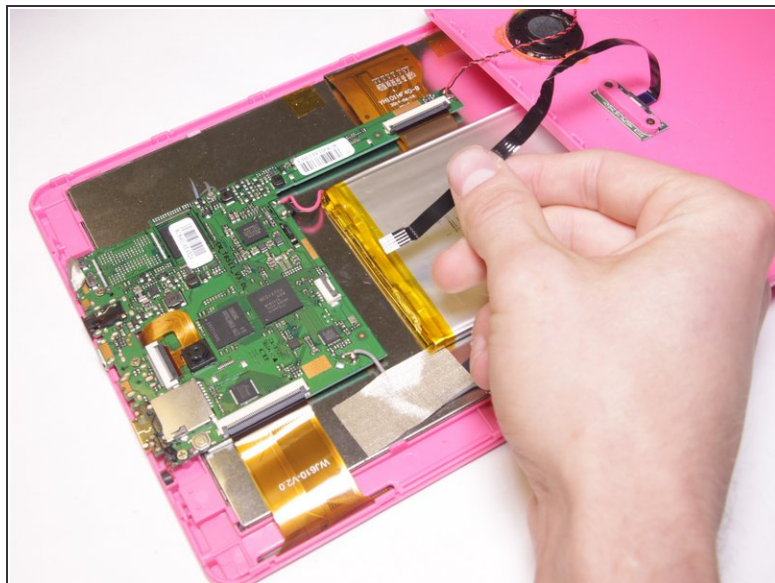
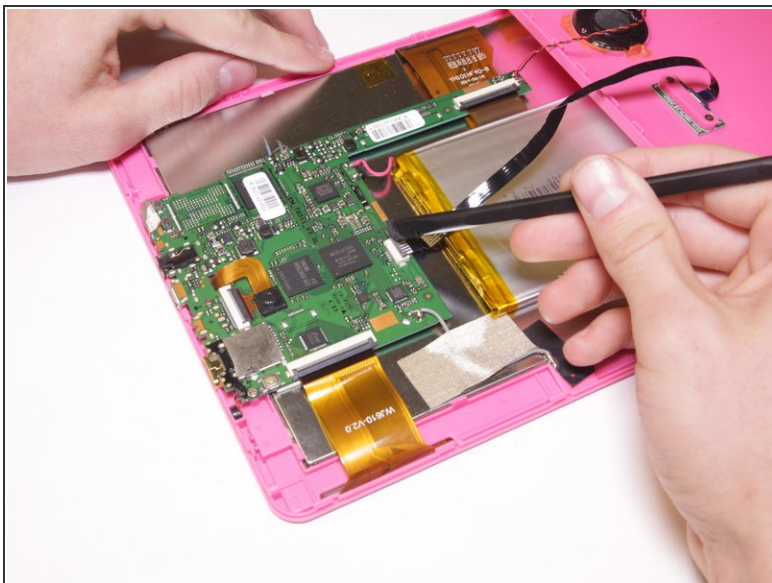
## Step 3



- Open the tablet cover carefully and slowly lengthwise.
- ⓘ The keyboard wire ribbon and rear speaker wire should be intact and connected with the back cover.
- ⚠ Opening the tablet abruptly may tear or damage cover attachments.

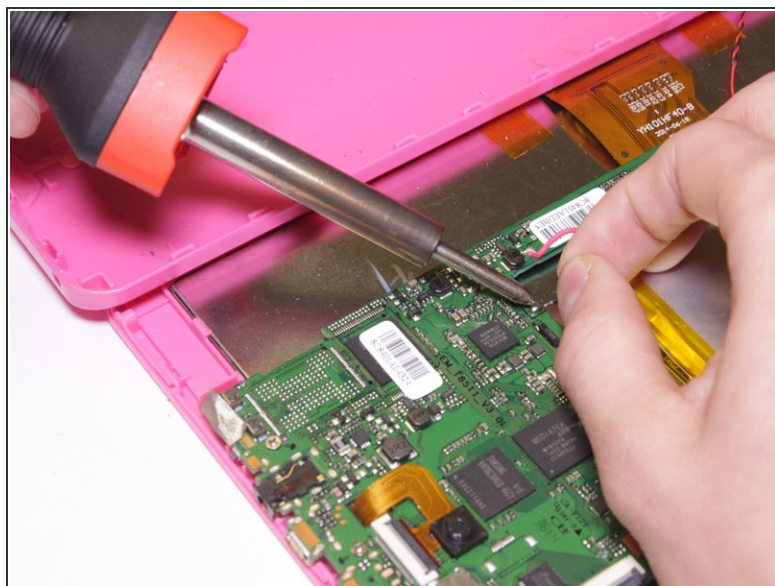


## Step 4



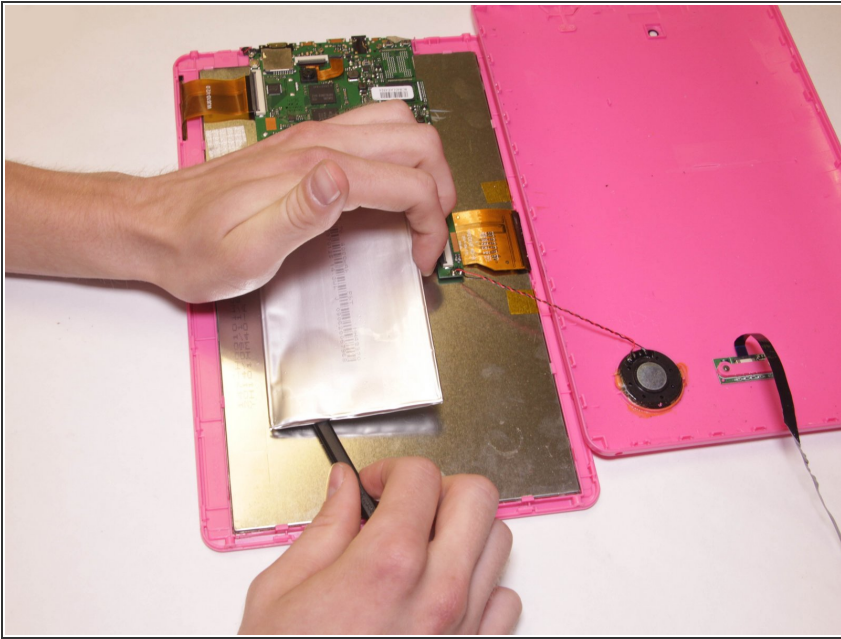
- Use a spudger to flip up the flap of the ZIF connector that holds the keyboard wire ribbon.
- Remove the wire ribbon from clamp.

## Step 5



- Use a soldering iron to melt the solder then remove the red and black wire from the motherboard.

## Step 6



- Use a spudger to pry and slide underneath the battery to unstick it from the LCD metal plate. It may take a good amount of force to remove.
- ⓘ Try to decrease battery deformation by using a spudger rather than prying with your hands.
- ⓘ Do not let battery fall back on adhesive, it will stick back onto the LCD metal plate.
- ⚠ Be careful to not puncture the battery. The battery may ignite or explode.

To reassemble your device, follow these instructions in reverse order.