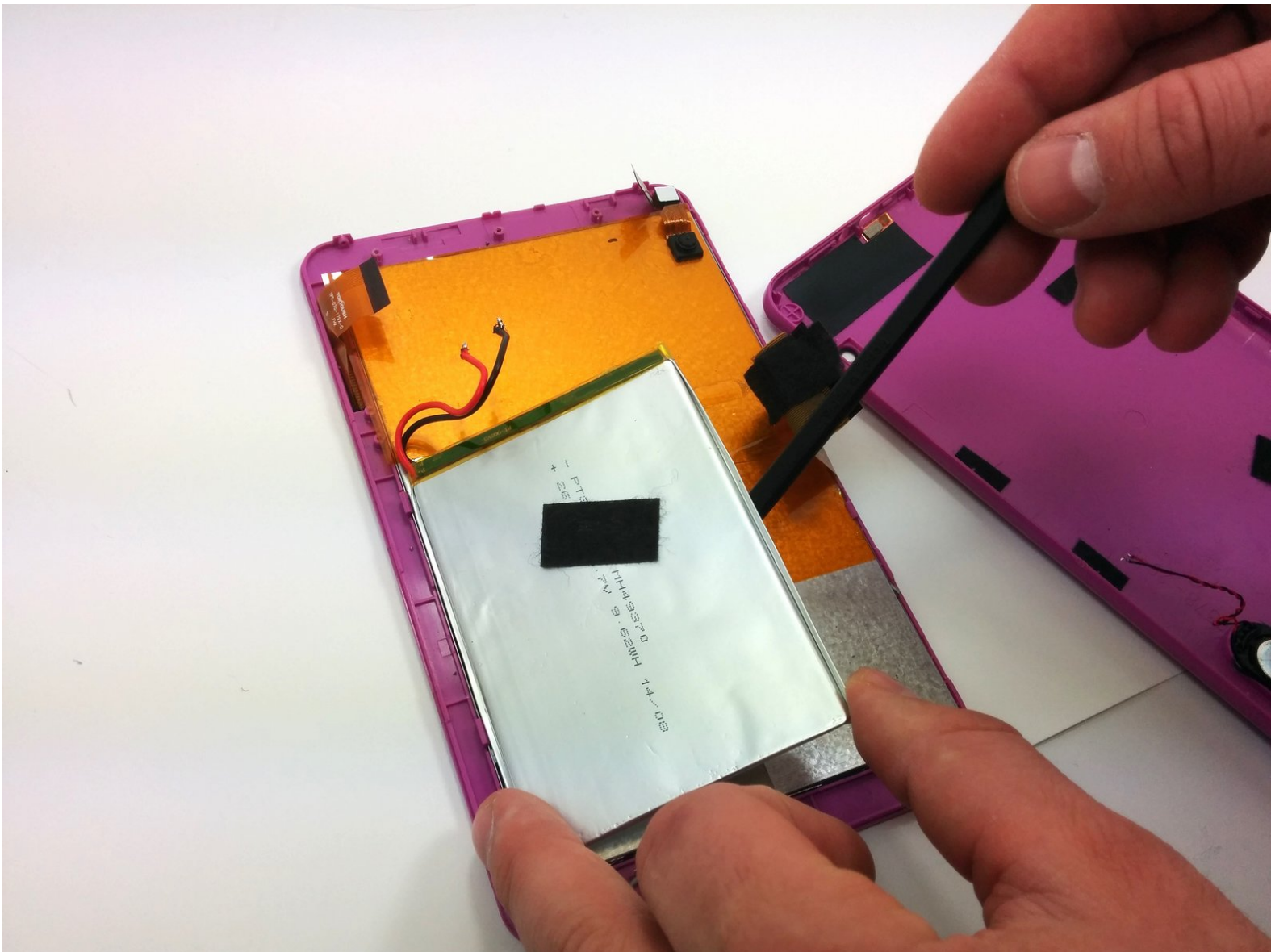




# RCA RCT6272W23 Battery Replacement

Replace the battery on your device.

Written By: Stephen Radachy



# INTRODUCTION

In this guide, you will learn how to replace the battery on your device.

---

## TOOLS:

- [Phillips #00 Screwdriver](#) (1)
  - [iFixit Opening Tools](#) (1)
  - [Soldering Iron](#) (1)
  - [Spudger](#) (1)
-

## Step 1 — Disassembling RCA RCT6272W23 Case



- Use a philips #00 screwdriver to unscrew both 4.064mm screws at the top of the device which hold it together.

## Step 2



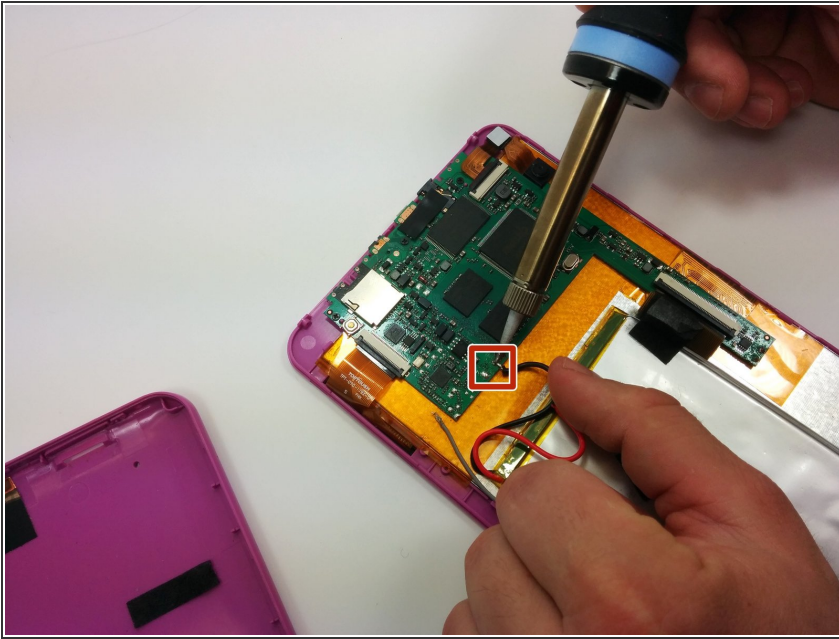
- Press a plastic opening tool into the space between the front and back portions of the case.
- Run it along the perimeter of the device to unhook the many plastic tabs.
- Gently pull both sides apart.



The speaker is connected to the back cover so be careful when separating

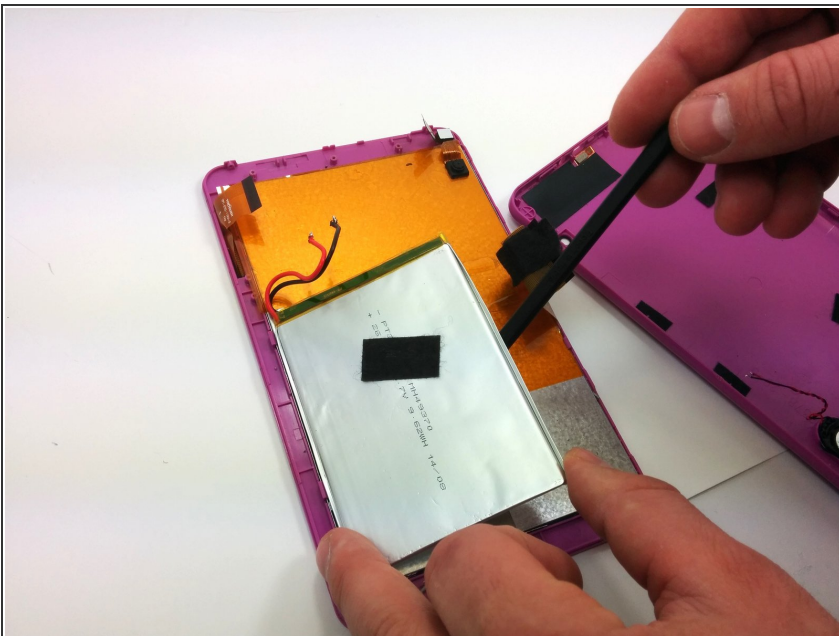


## Step 3 — Battery



- Use a soldering iron to remove the soldered connections from the battery to the motherboard.
- ⚠ For your safety and to ensure a correct repair, be sure to exercise caution when using the soldering iron.
- ⓘ For more information about soldering, check out this [guide](#).

## Step 4



- Using a spudger, pry the battery off of the rest of the body
- ⓘ The battery is taped on with double sided tape. It would be a good idea to have another strip to reattach the battery.

To reassemble your device, follow these instructions in reverse order.