



RCA RCT6272W23 Display Replacement

Replace the display screen on your device

Written By: Ross Pennala



INTRODUCTION

In this guide, you will learn how to replace the display screen on your device



TOOLS:

- [Phillips #00 Screwdriver](#) (1)
 - [iFixit Opening Tools](#) (1)
 - [Soldering Iron](#) (1)
 - [Spudger](#) (1)
-

Step 1 — Case



- Use a philips #00 screwdriver to unscrew both 4.064mm screws at the top of the device which hold it together.

Step 2

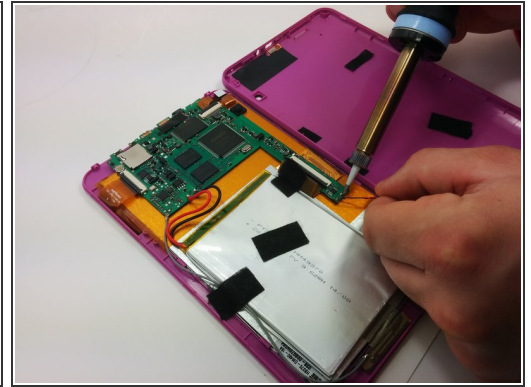
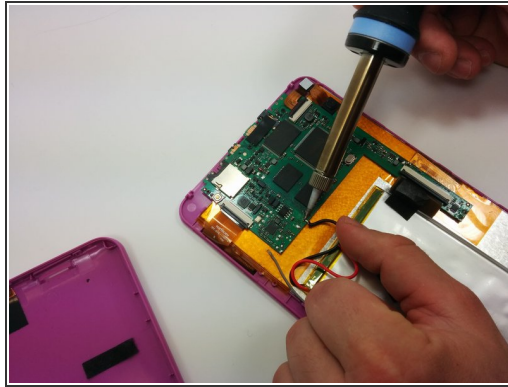


- Press a plastic opening tool into the space between the front and back portions of the case.
- Run it along the perimeter of the device to unhook the many plastic tabs.
- Gently pull both sides apart.



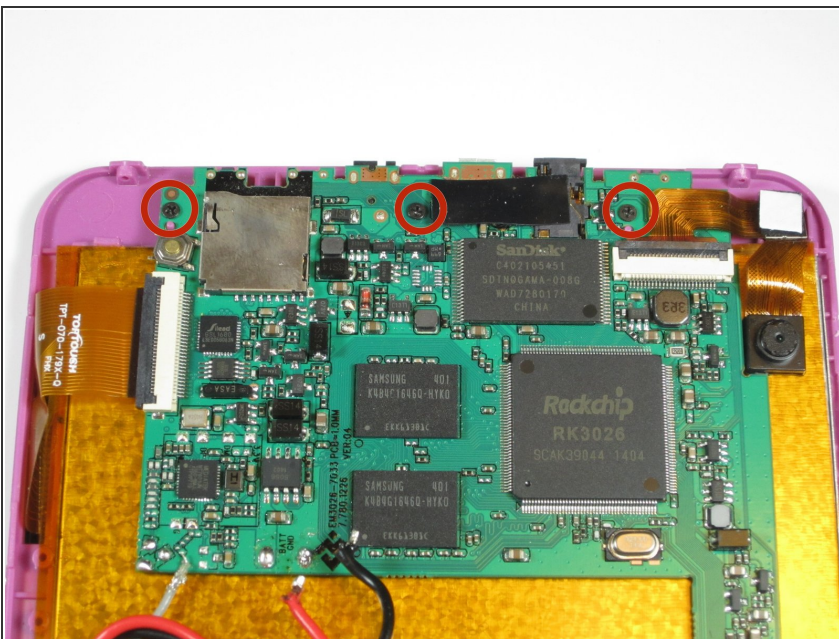
The speaker is connected to the back cover so be careful when separating

Step 3 — Motherboard



- Use a soldering iron to remove the soldered connections on the motherboard
- ⚠ For your safety and to ensure a correct repair, be sure to exercise caution when using the soldering iron.
- ℹ For more information about soldering, check out this [guide](#).

Step 4



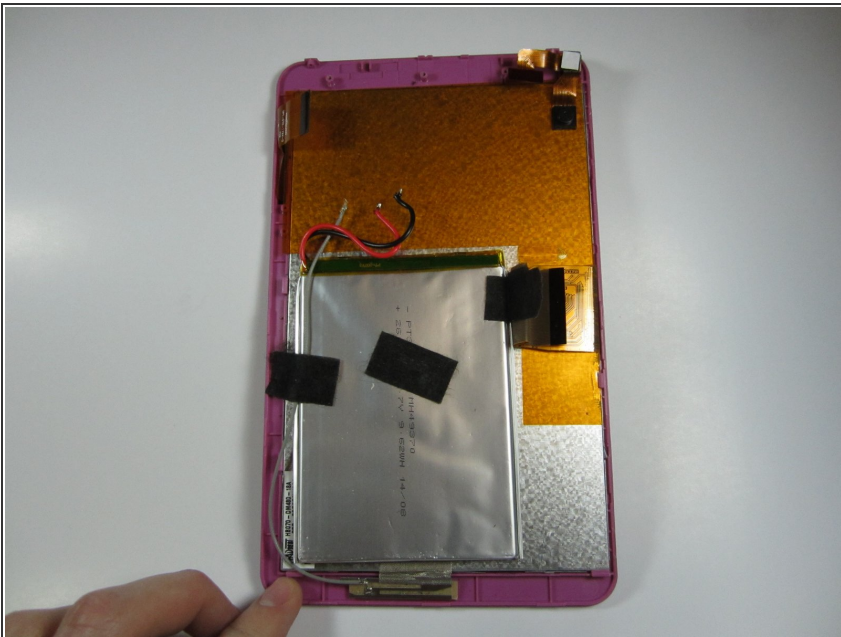
- Use a philips #00 screwdriver to unscrew the three 4.064mm screws which attach the motherboard to the front of the device.

Step 5



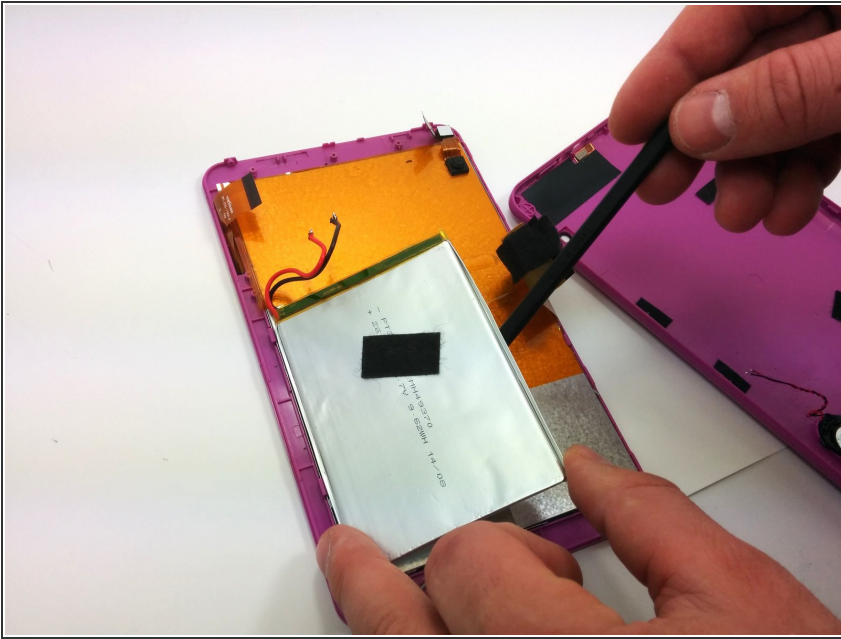
- Use your fingers to pop the three black tabs up to release the flat plastic data transfer cables.

Step 6



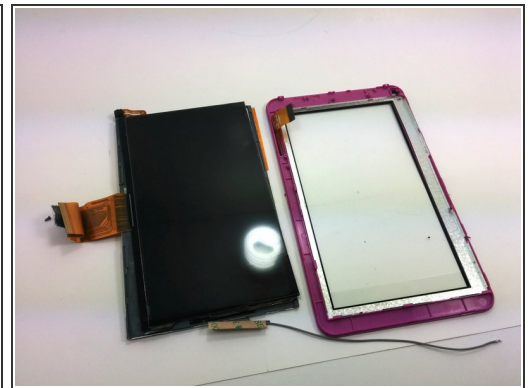
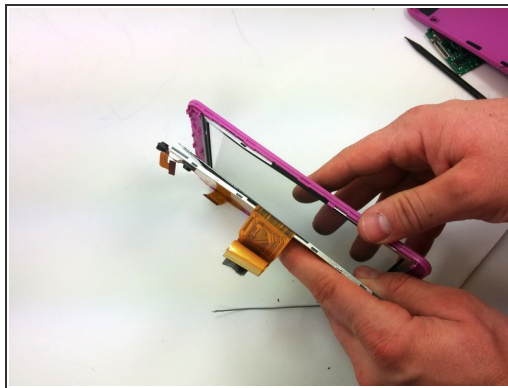
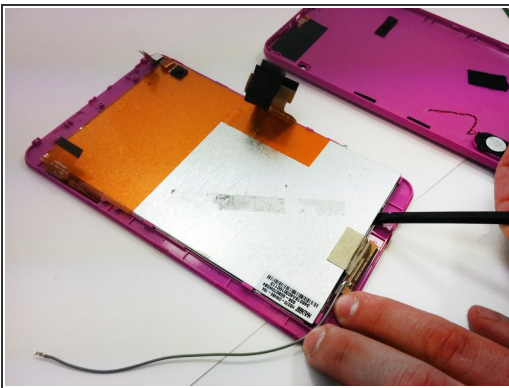
- Pull up the motherboard from the rest of the body.

Step 7 — Display



- Using a plastic opening tool, pry the battery off of the rest of the body
- ⓘ The battery is taped on with double sided tape. It would be a good idea to have another strip to reattach the battery.

Step 8



- Using a spudger, separate the display surface and the front cover
- ⚠ Be careful not to break the tabs that hold the display screen in place
- ⓘ A second spudger may be necessary to help hold the position of the display screen

To reassemble your device, follow these instructions in reverse order.