



# RCA RCT6272W23 Motherboard Replacement

In this guide you will learn how to replace the motherboard on a RCA RCT6272W23

Written By: Stephen Radachy



# INTRODUCTION

In this guide you will learn how to replace the motherboard on a RCA RCT6272W23

---

## TOOLS:

- [Phillips #00 Screwdriver](#) (1)
  - [iFixit Opening Tools](#) (1)
  - [Soldering Iron](#) (1)
-

## Step 1 — Case



- Use a philips #00 screwdriver to unscrew both 4.064mm screws at the top of the device which hold it together.

## Step 2



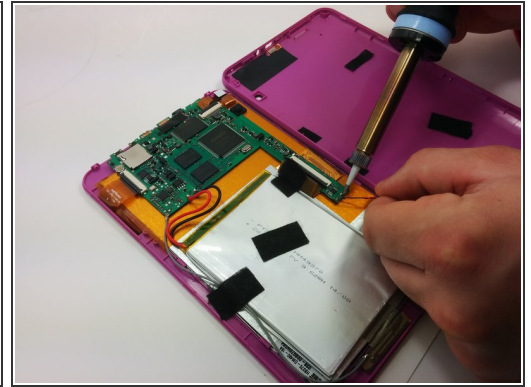
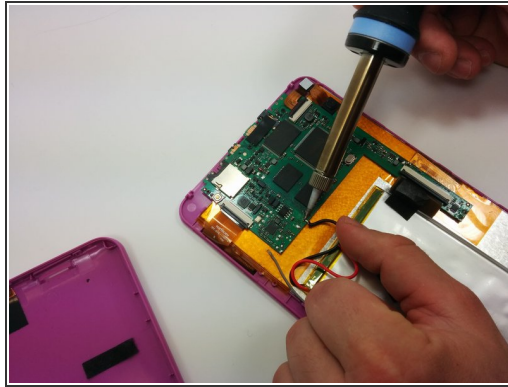
- Press a plastic opening tool into the space between the front and back portions of the case.
- Run it along the perimeter of the device to unhook the many plastic tabs.
- Gently pull both sides apart.



The speaker is connected to the back cover so be careful when separating

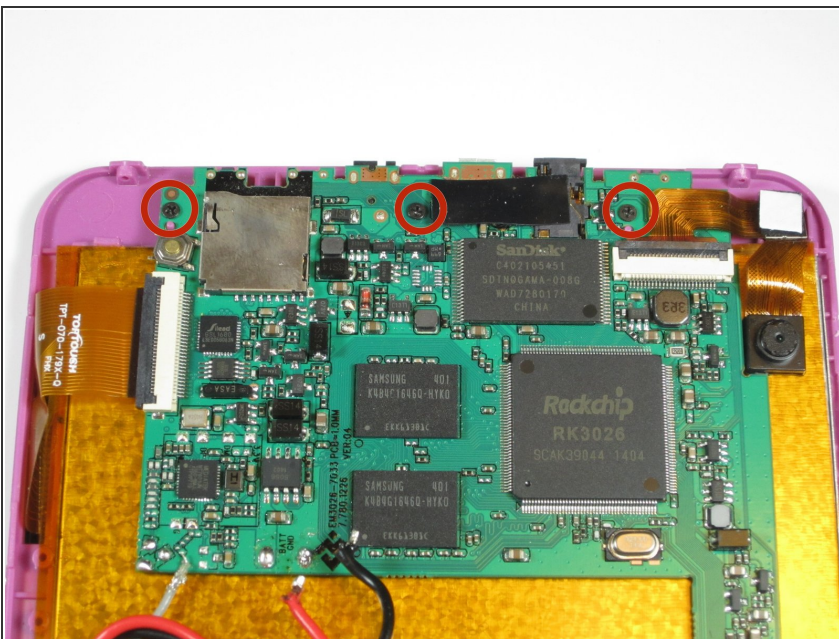


## Step 3 — Motherboard



- Use a soldering iron to remove the soldered connections on the motherboard
- ⚠ For your safety and to ensure a correct repair, be sure to exercise caution when using the soldering iron.
- ℹ For more information about soldering, check out this [guide](#).

## Step 4



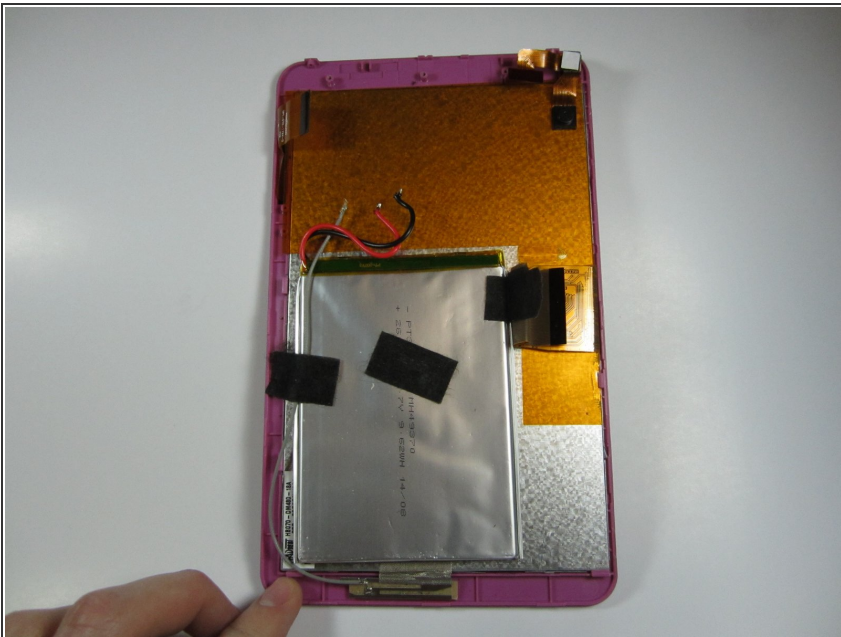
- Use a philips #00 screwdriver to unscrew the three 4.064mm screws which attach the motherboard to the front of the device.

## Step 5



- Use your fingers to pop the three black tabs up to release the flat plastic data transfer cables.

## Step 6



- Pull up the motherboard from the rest of the body.

To reassemble your device, follow these instructions in reverse order.