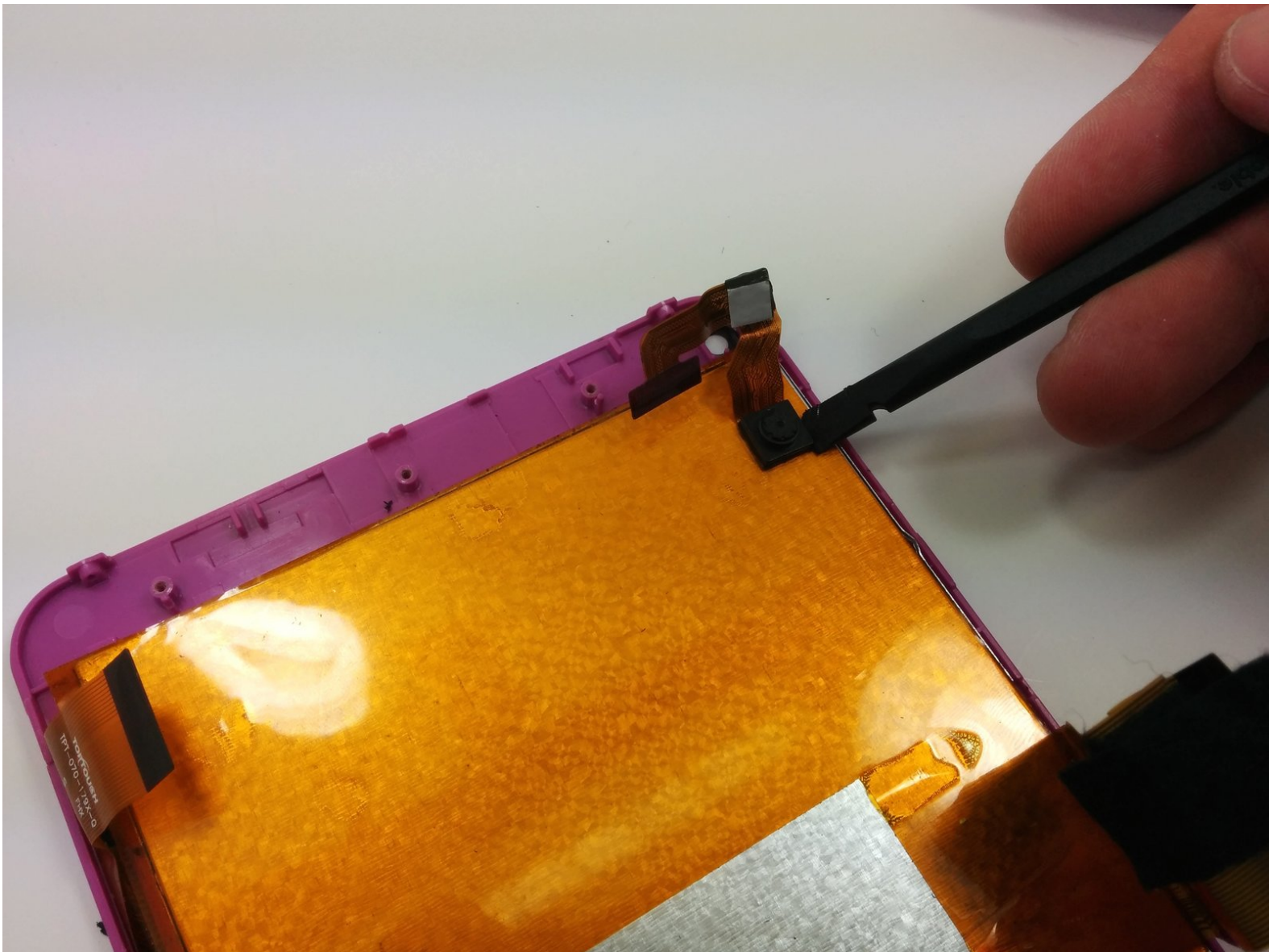




RCA RCT6272W23 Rear Camera Replacement

Replace the rear camera on your device.

Written By: Stephen Radachy



INTRODUCTION

In this guide, you will learn how to replace the rear camera on your device.



TOOLS:

- [Phillips #00 Screwdriver](#) (1)
 - [iFixit Opening Tools](#) (1)
 - [Soldering Iron](#) (1)
 - [Spudger](#) (1)
-

Step 1 — Case



- Use a philips #00 screwdriver to unscrew both 4.064mm screws at the top of the device which hold it together.

Step 2

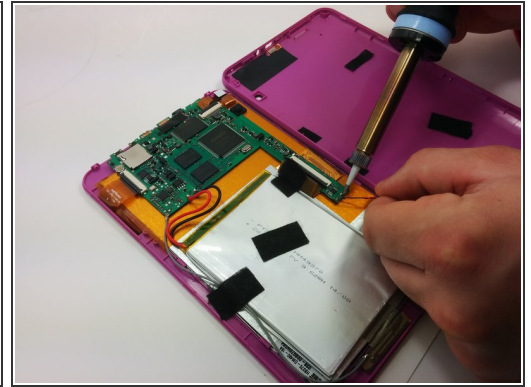
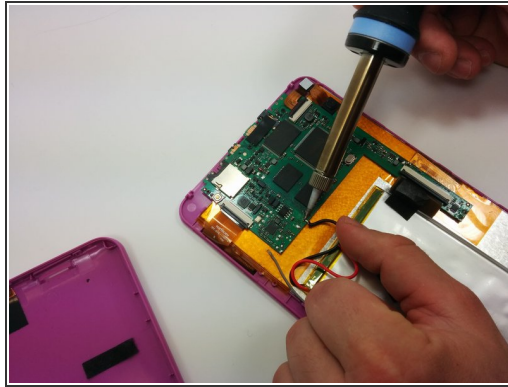


- Press a plastic opening tool into the space between the front and back portions of the case.
- Run it along the perimeter of the device to unhook the many plastic tabs.
- Gently pull both sides apart.



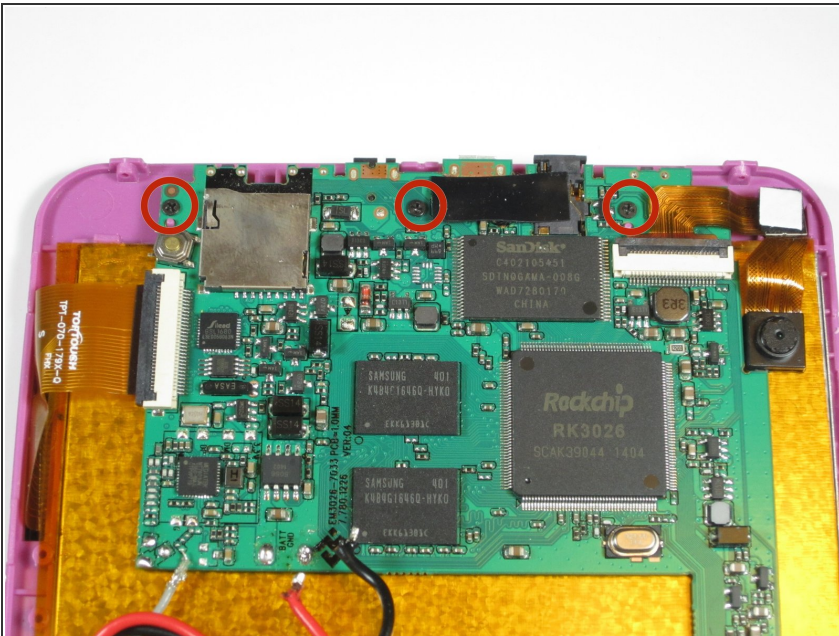
The speaker is connected to the back cover so be careful when separating

Step 3 — Motherboard



- Use a soldering iron to remove the soldered connections on the motherboard
- ⚠ For your safety and to ensure a correct repair, be sure to exercise caution when using the soldering iron.
- ℹ For more information about soldering, check out this [guide](#).

Step 4



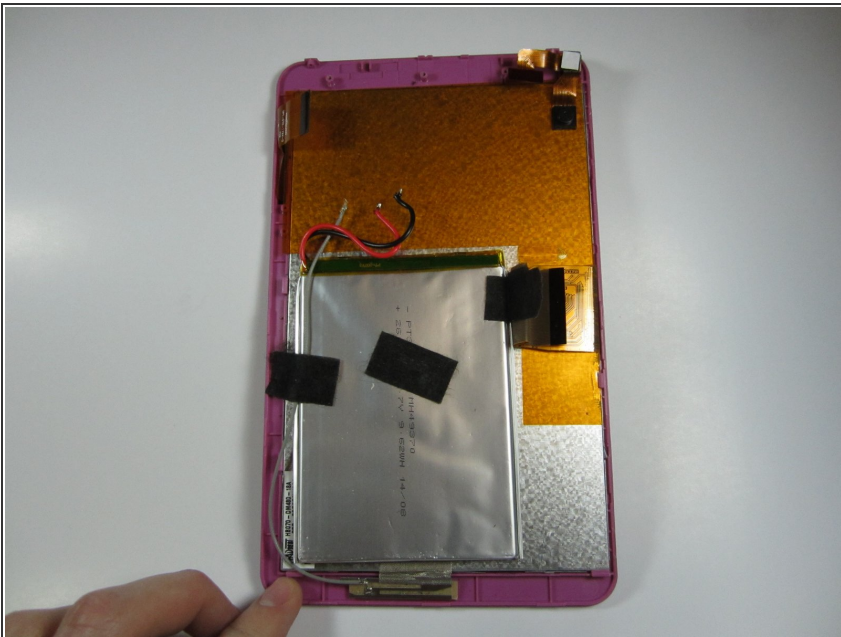
- Use a philips #00 screwdriver to unscrew the three 4.064mm screws which attach the motherboard to the front of the device.

Step 5



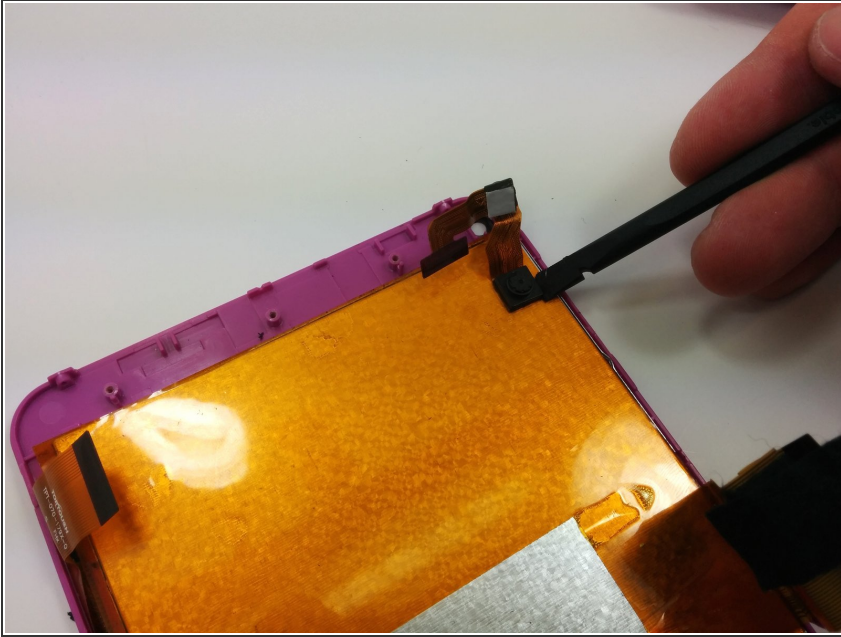
- Use your fingers to pop the three black tabs up to release the flat plastic data transfer cables.

Step 6



- Pull up the motherboard from the rest of the body.

Step 7 — Rear Camera



- Using a spudger, gently pry off the camera from the back of the display

To reassemble your device, follow these instructions in reverse order.