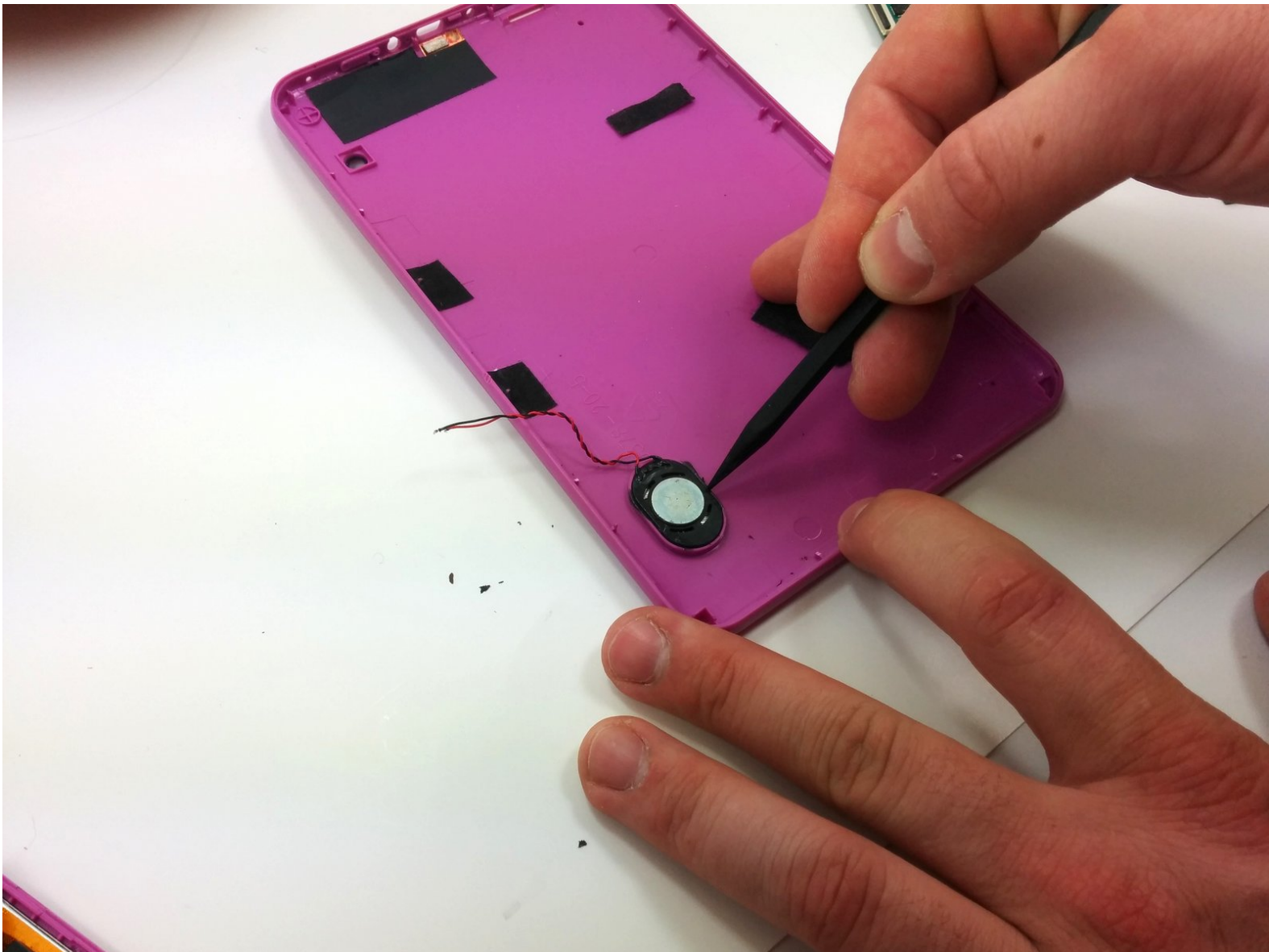




RCA RCT6272W23 Speaker Replacement

Replace the speaker on your device.

Written By: Stephen Radachy



INTRODUCTION

In this guide, you will learn how to replace the speaker on your device.



TOOLS:

- [Phillips #00 Screwdriver](#) (1)
 - [iFixit Opening Tools](#) (1)
 - [Soldering Iron](#) (1)
 - [Spudger](#) (1)
-

Step 1 — Case



- Use a philips #00 screwdriver to unscrew both 4.064mm screws at the top of the device which hold it together.

Step 2

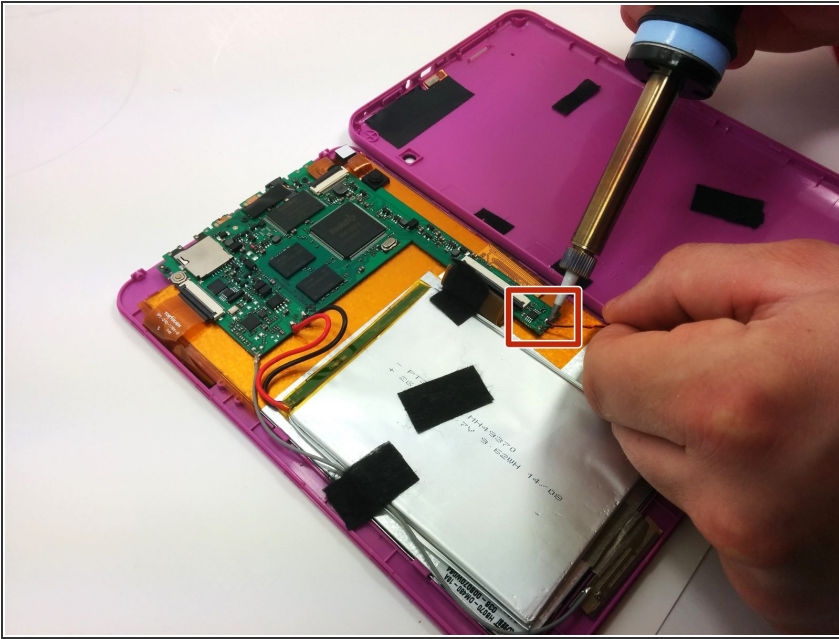


- Press a plastic opening tool into the space between the front and back portions of the case.
- Run it along the perimeter of the device to unhook the many plastic tabs.
- Gently pull both sides apart.



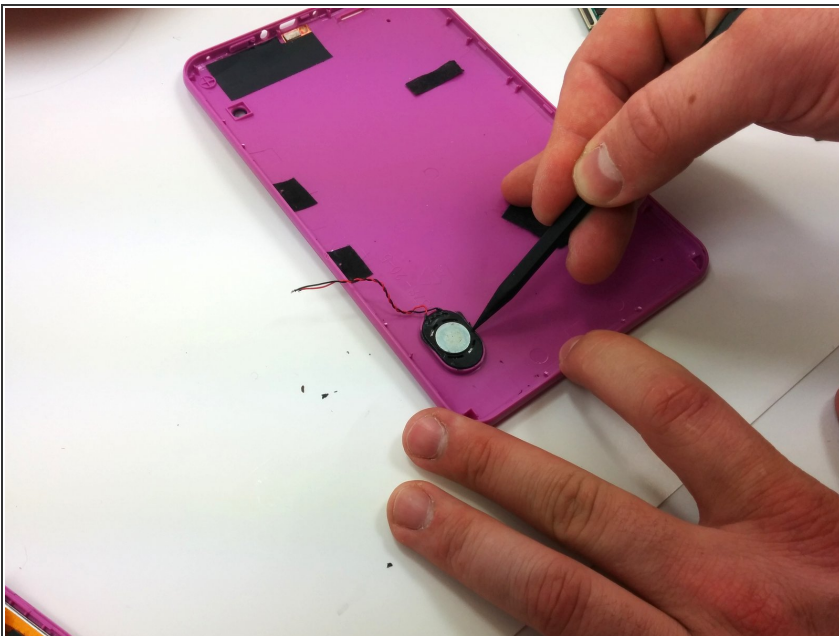
The speaker is connected to the back cover so be careful when separating

Step 3 — Speaker



- Use a Soldering iron to removed the soldered connections for the speaker
- ⚠ For your safety and to ensure a correct repair, be sure to exercise caution when using the soldering iron
- ℹ For more information about soldering, check out this [guide](#).

Step 4



- Using a spudger, gently pry the speaker out of its plastic enclosure.

To reassemble your device, follow these instructions in reverse order.