



RCA RP3715A Display Replacement

This guide will explain how to replace the plastic display panel located on the front of the clock.

Written By: Myles Waiters



INTRODUCTION

This guide will explain in depth how to tear down the clock up until the removal, and replacement of the display. In order to take get to the display the speaker must be removed.



TOOLS:

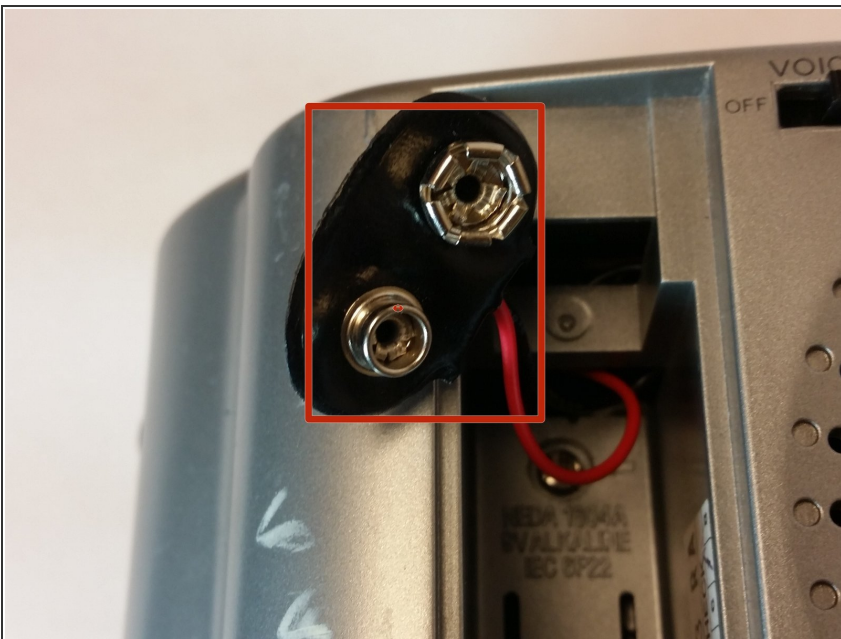
- [Phillips #000 Screwdriver](#) (1)
 - [Spudger](#) (1)
 - [Phillips #00 Screwdriver](#) (1)
-

Step 1 — Reaching the battery terminal.



- Push down on the clip to release pressure. The pull off the plastic cover.

Step 2 — Replacing the battery



- Remove the 9-volt battery from the battery terminal.

Step 3 — Getting inside the device.



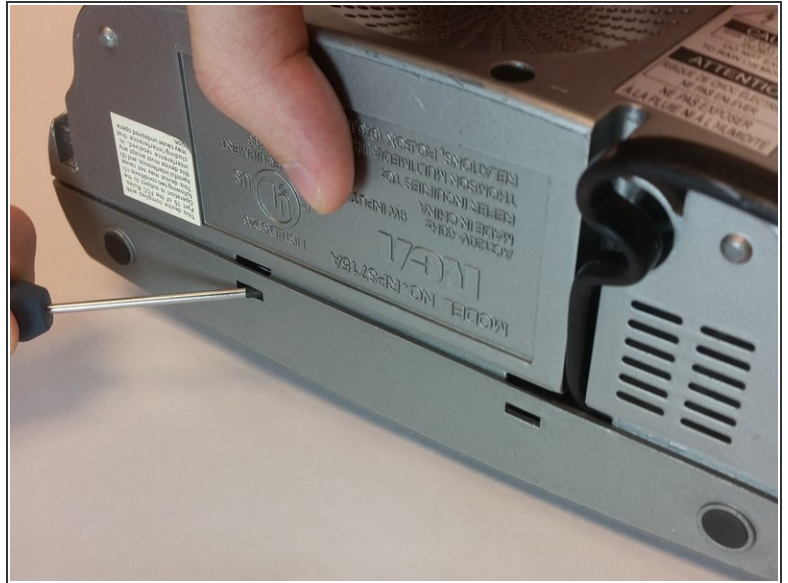
- Take out the six screws located on the back of the device.
- The red screws are 10 mm Phillip's #1. The orange screws are 13 mm Phillips #1.
- Three screws are located on the back panel. One is located inside the battery carriage.
- Two screws are located on the on the back panel on the bottom left and right side.

Step 4 — Relieve extension cord tension.



- Remove the 10 mm Phillip's #1 screw.
- Then remove the metal reinforcement.

Step 5



- Using flathead screwdriver undo the release tabs.

Step 6



- Pry the release tabs with a spudger.
- Start with back of the device on the topside.

Step 7



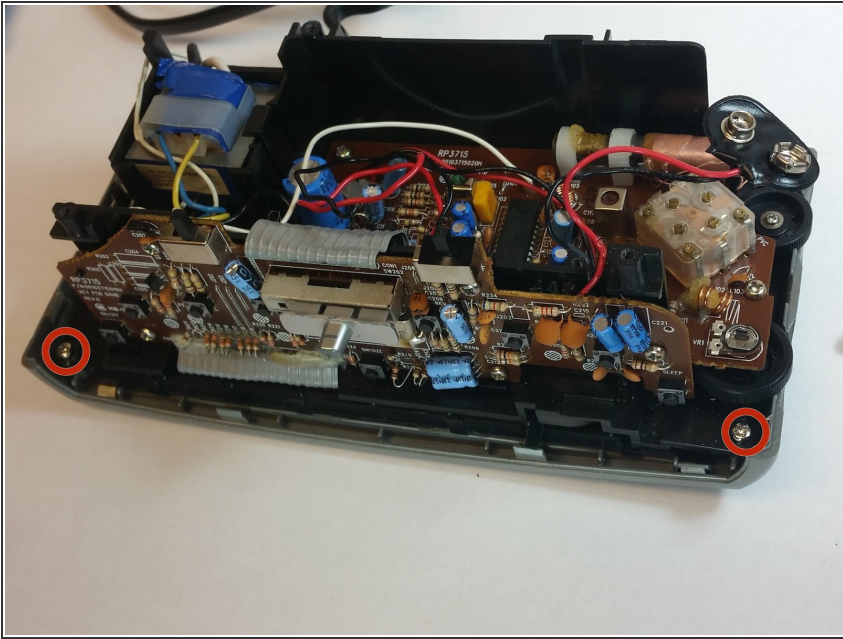
- Pry open both tabs to remove the topside of the clock.

Step 8 — Speaker Replacement



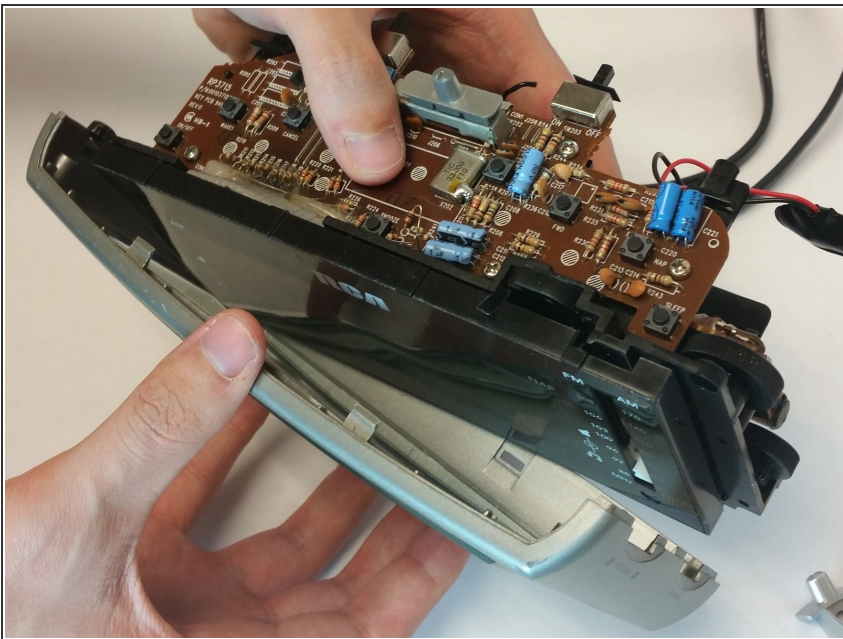
- Remove the two 10mm Phillip's #1 screws. Also remove the two reinforcements holding the speaker in place.

Step 9 — Detaching the front panel



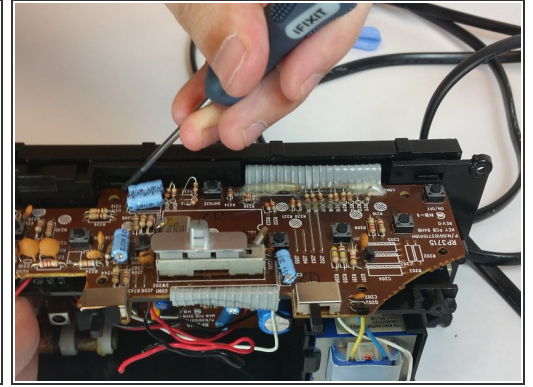
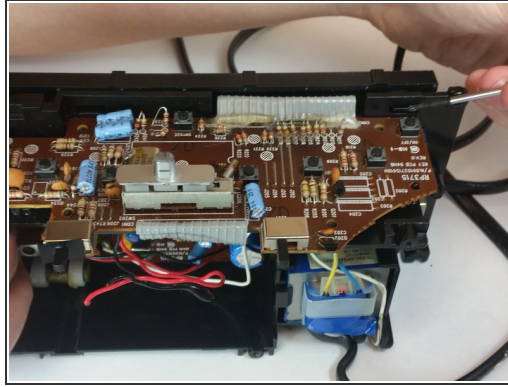
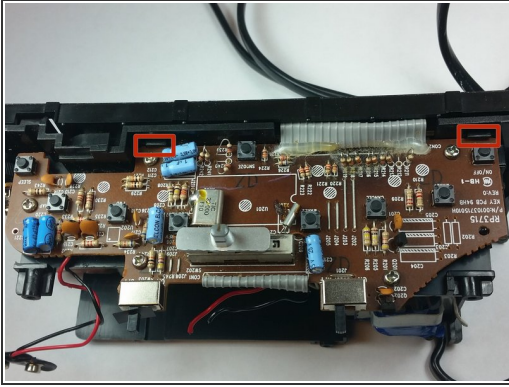
- Remove the two 10 mm Phillip's #1 screws.

Step 10



- Remove the gray panel from the frame.

Step 11 — Unlatch release tabs



- The two latches located in the picture will help take off the display.
- Remove the display.

To reassemble your device, follow these instructions in reverse order.