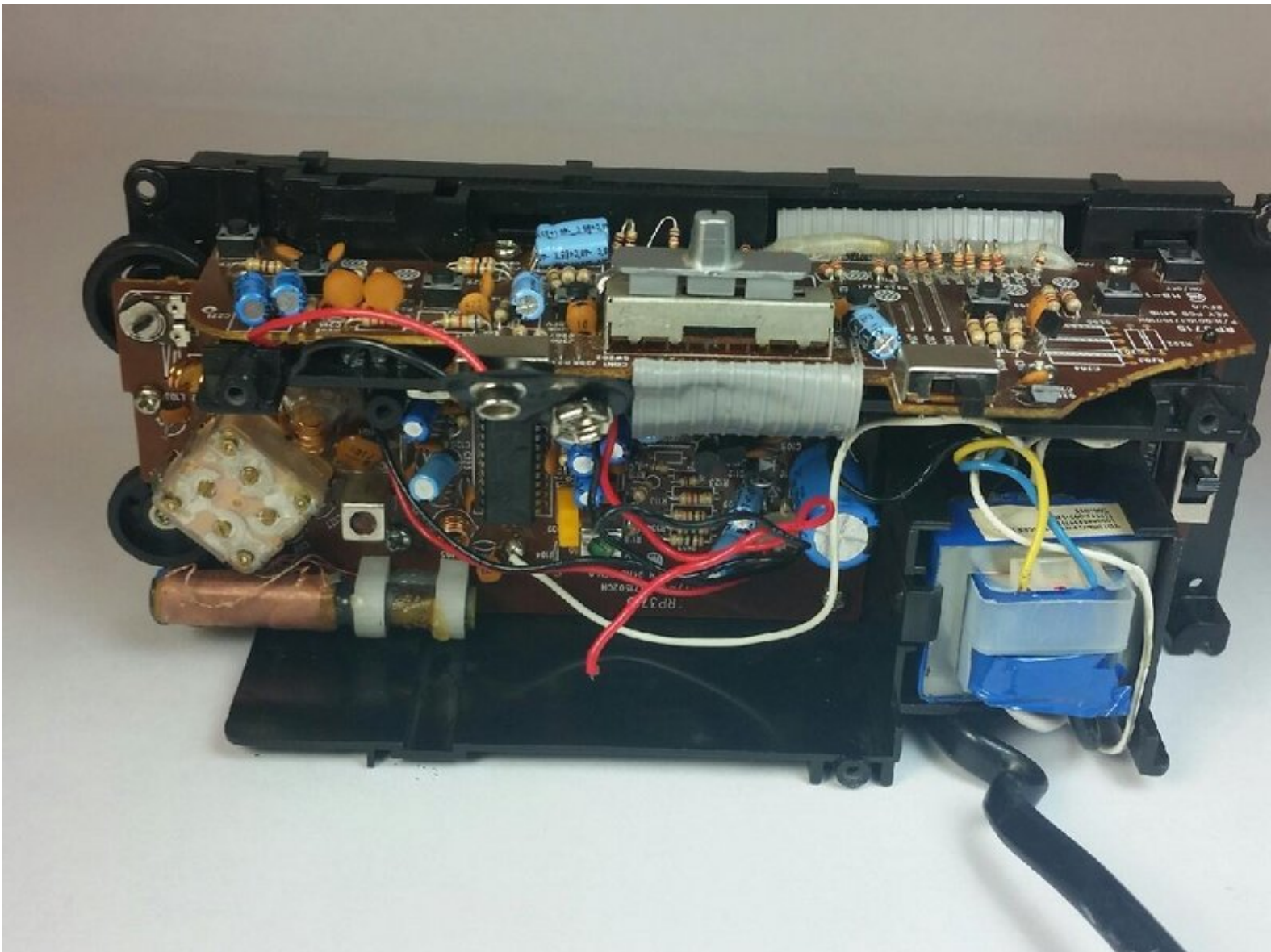




RCA RP3715A Motherboard Replacement

Guide provides step-by-step explanation on how to replace motherboard

Written By: Alexander Trowell



INTRODUCTION

This guide will explain on how to replace motherboard. Replacing the motherboard is the last resort in order to fix the device. Replacing the motherboard will give you brand new system from the inside. It should fix all known problems expect for a blown speaker or the tuning wheel.



TOOLS:

- [Phillips #00 Screwdriver](#) (1)
 - [Phillips #000 Screwdriver](#) (1)
 - [Spudger](#) (1)
-

Step 1 — Getting inside the device.



- Take out the six screws located on the back of the device.
- The red screws are 10 mm Phillip's #1. The orange screws are 13 mm Phillips #1.
- Three screws are located on the back panel. One is located inside the battery carriage.
- Two screws are located on the on the back panel on the bottom left and right side.

Step 2 — Relieve extension cord tension.



- Remove the 10 mm Phillip's #1 screw.
- Then remove the metal reinforcement.

Step 3



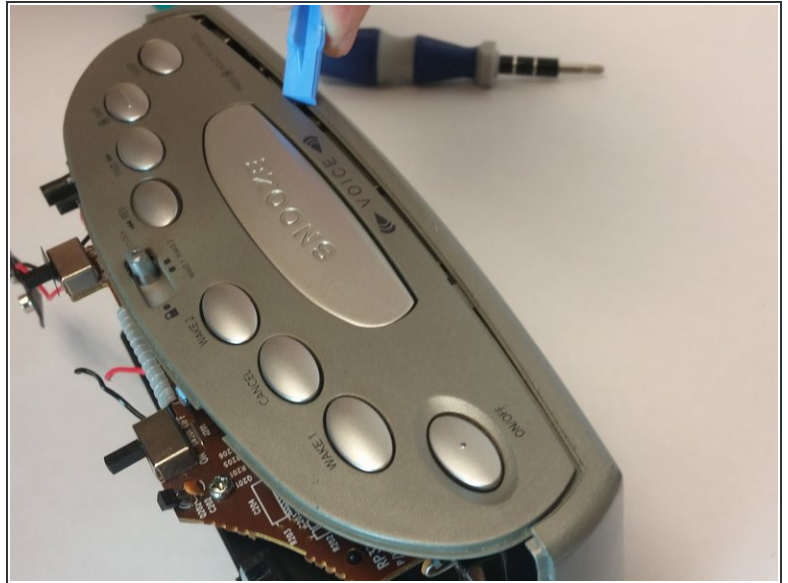
- Using flathead screwdriver undo the release tabs.

Step 4



- Pry the release tabs with a spudger.
- Start with back of the device on the topside.

Step 5



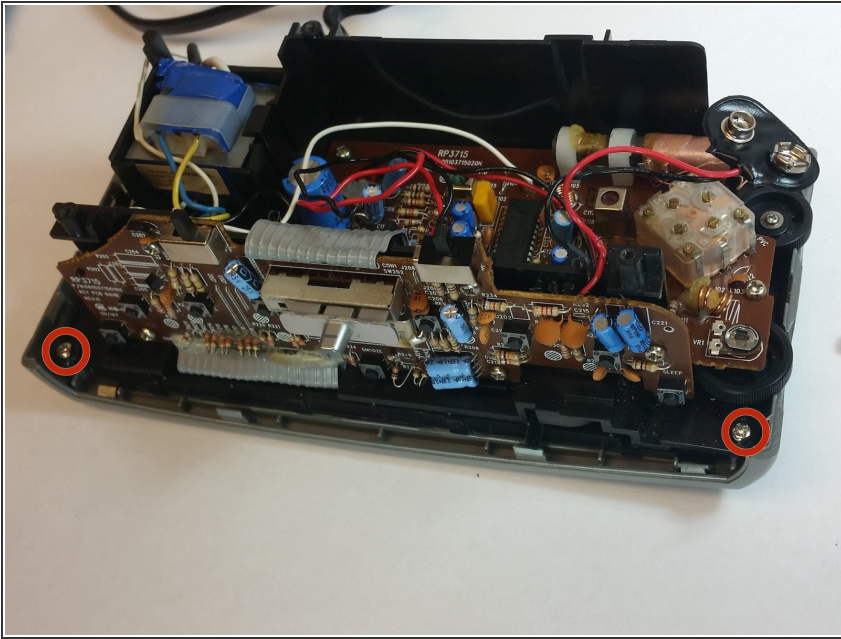
- Pry open both tabs to remove the topside of the clock.

Step 6 — Speaker Replacement



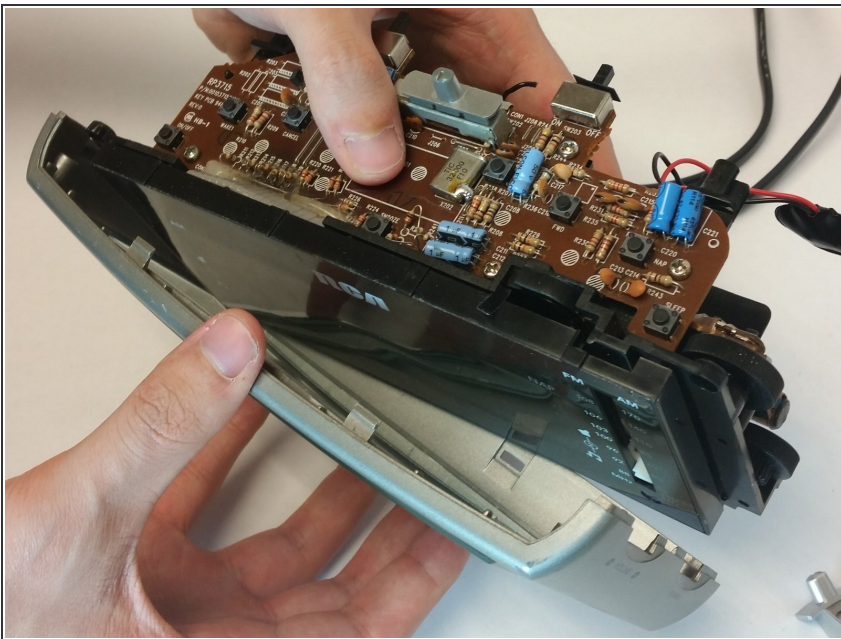
- Remove the two 10mm Phillip's #1 screws. Also remove the two reinforcements holding the speaker in place.

Step 7 — Detaching the front panel



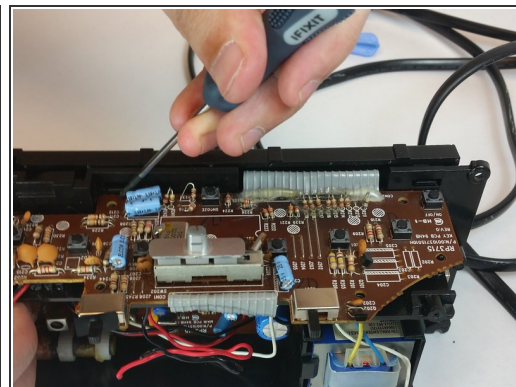
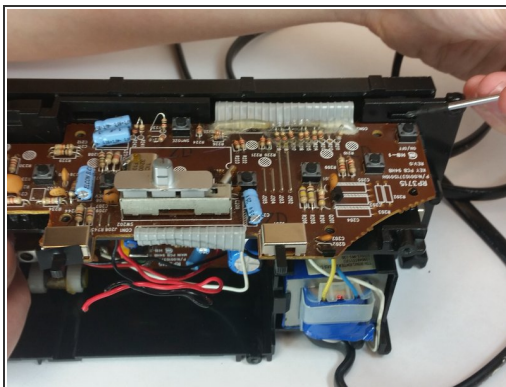
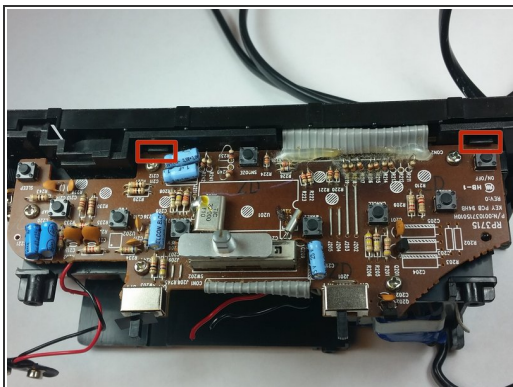
- Remove the two 10 mm Phillip's #1 screws.

Step 8



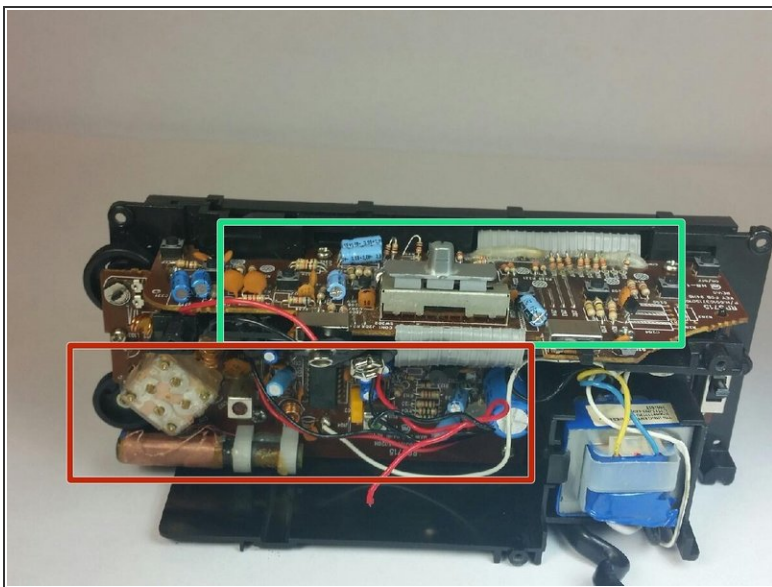
- Remove the gray panel from the frame.

Step 9 — Unlatch release tabs



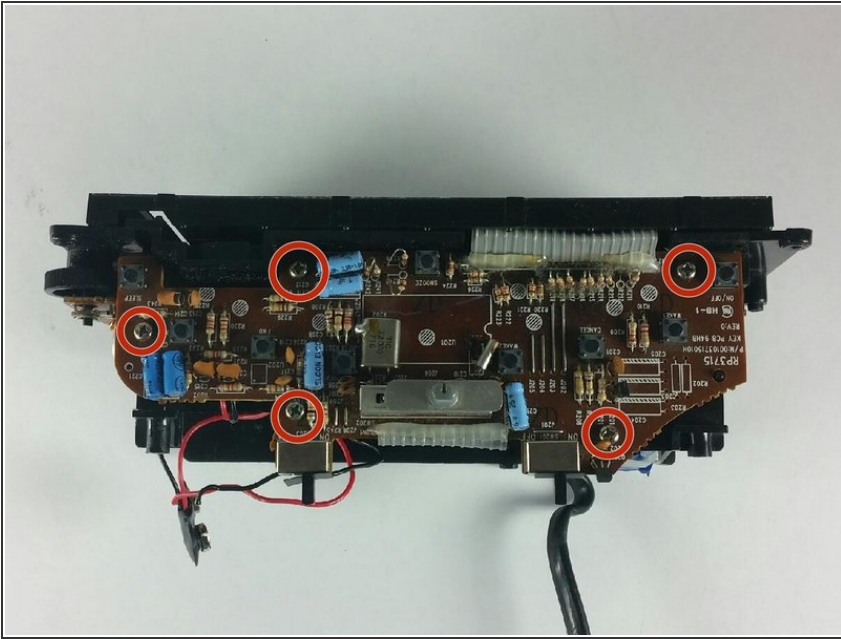
- The two latches located in the picture will help take off the display.
- Remove the display.

Step 10 — Motherboard



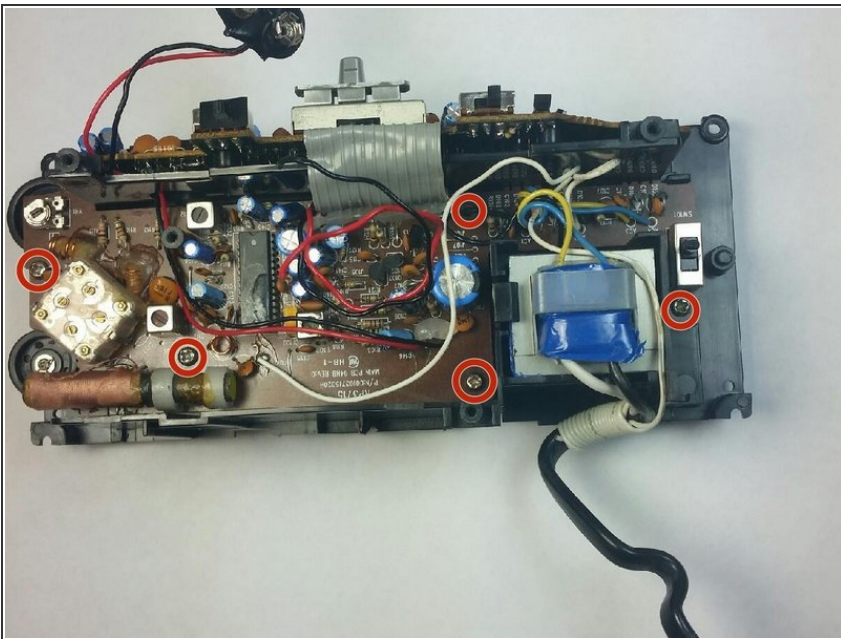
- asd

Step 11 — Removing the top part of motherboard



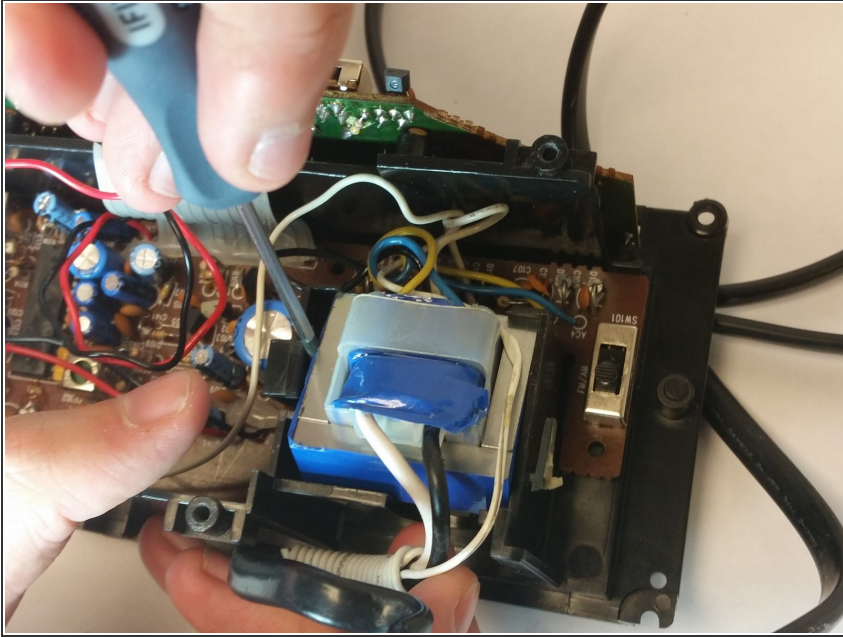
- Remove the top 5 10mm Phillips #1 screws holding the top part of the motherboard

Step 12 — Removing the side part of motherboard



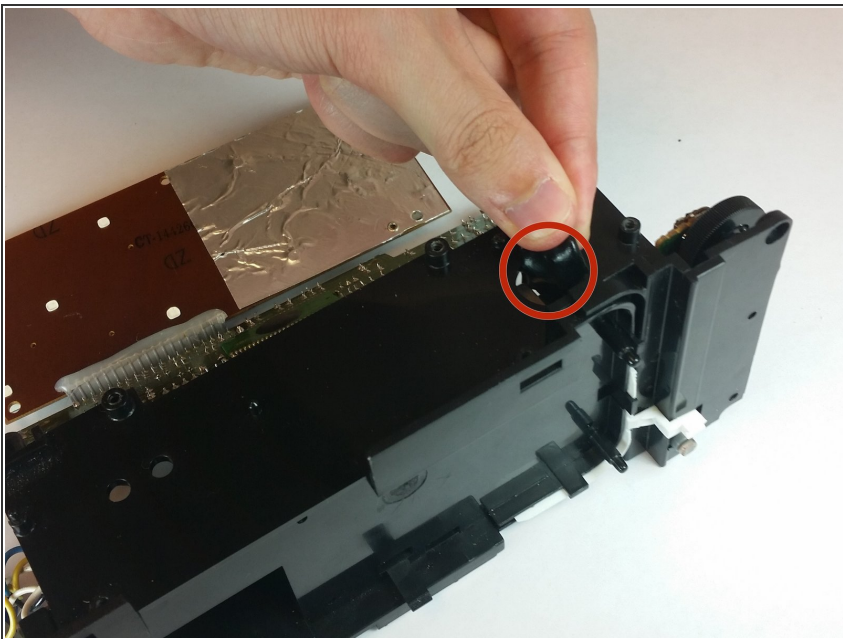
- Remove the 5 10mm Phillip's #1 screws that holding side part of the motherboard

Step 13



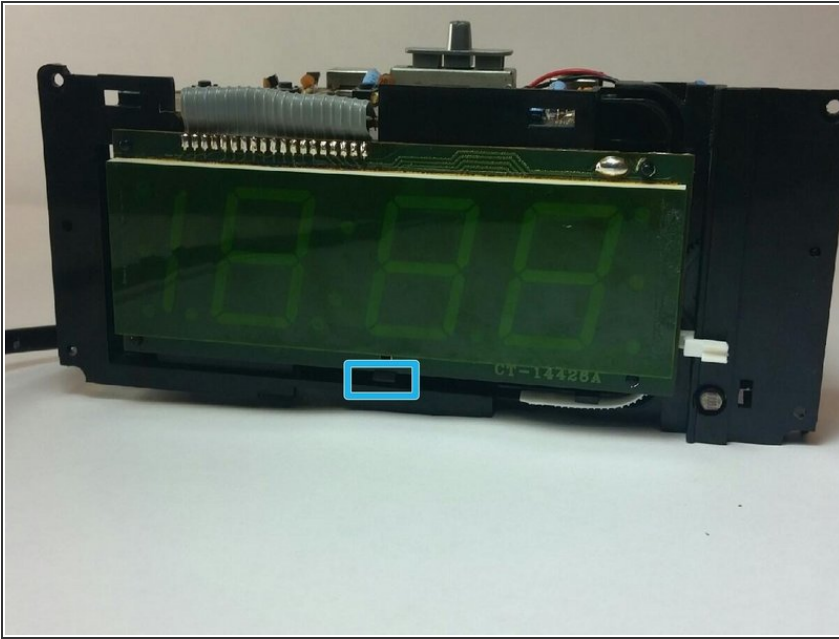
- Remove the transformer by pulling back the release tab shown.

Step 14



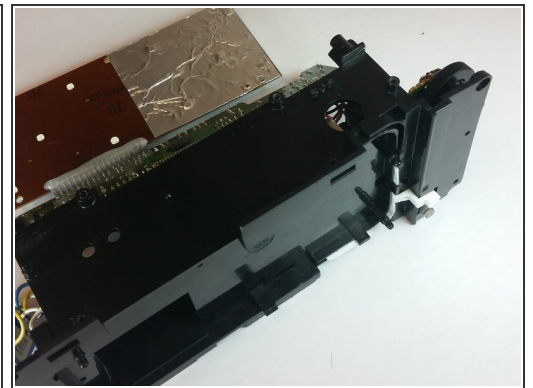
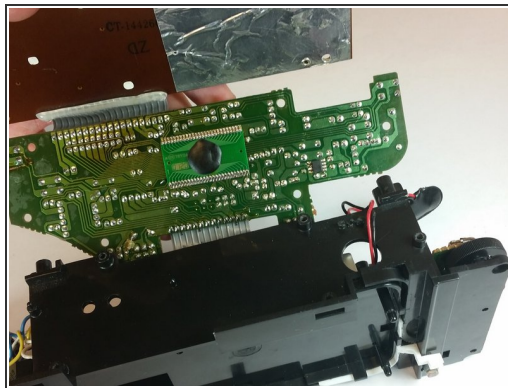
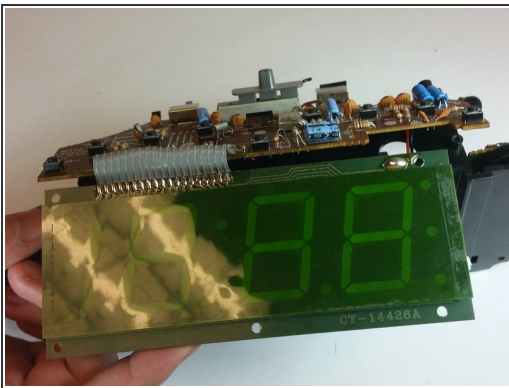
- Pull the battery terminal through the whole shown.

Step 15 — Lift the digital screen



- First release the latch highlighted in the picture. Then grab the screen by the bottom and lift it up.

Step 16 — Lift the top piece of motherboard



- Remove the motherboard from the frame using the illustration shown.

To reassemble your device, follow these instructions in reverse order.