



RCA ViSYS 25424RE1 Base Disassembly

Take apart the rear base from the front base on RCA ViSYS 25424RE1

Written By: Mit Patel



INTRODUCTION

Sometimes the issues with the phone may deal with an internal malfunction. This guide demonstrates how to take apart the base of the speakerphone as a prerequisite for internal technical repair. The base must be removed before accessing the internal parts.



TOOLS:

- [Phillips #00 Screwdriver](#) (1)
 - [iFixit Opening Tools](#) (1)
-

Step 1 — Base



- Remove the eight 11mm screws found on the bottom side of the base with a Phillips #00 screwdriver.

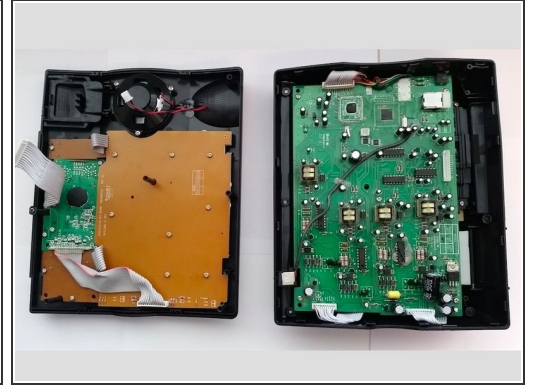
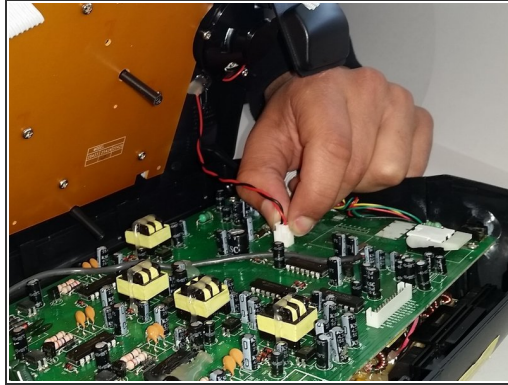
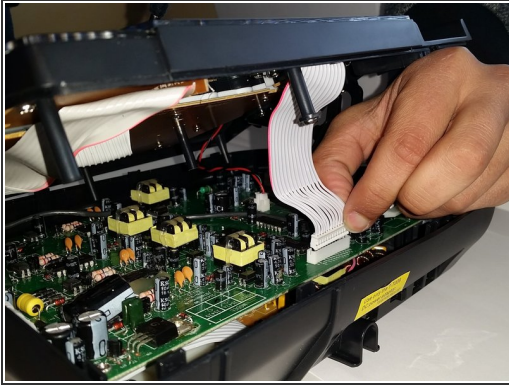
Step 2



- Use a plastic opening tool to separate the back and front pieces.

⚠ Gently remove the back cover, because the wires are connected to each piece.

Step 3



- Unclip the wires that connect the front piece to the circuit board on the back piece.

To reassemble your device, follow these instructions in reverse order.