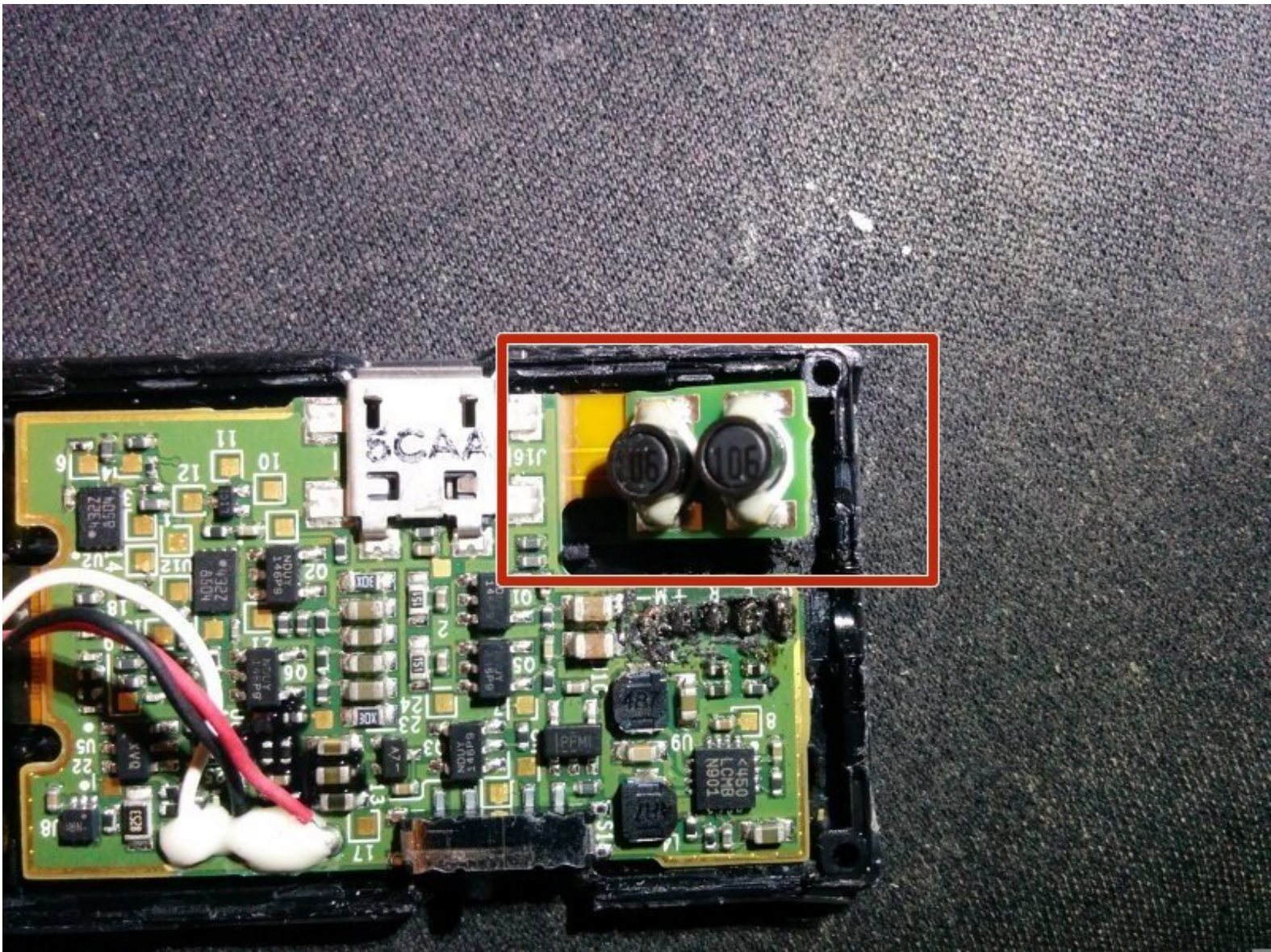




REAL vs. FAKE Bose QC20i circuit board comparison

Here is the difference between a REAL Bose QC20 (or QC20i) circuit and a FAKE Bose QC20 (like too many of us found on EBay)

Written By: RichB89600



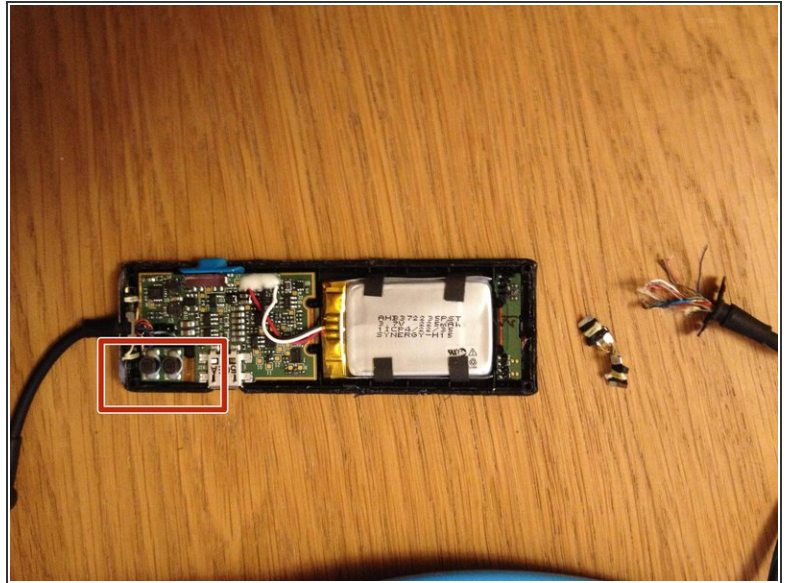
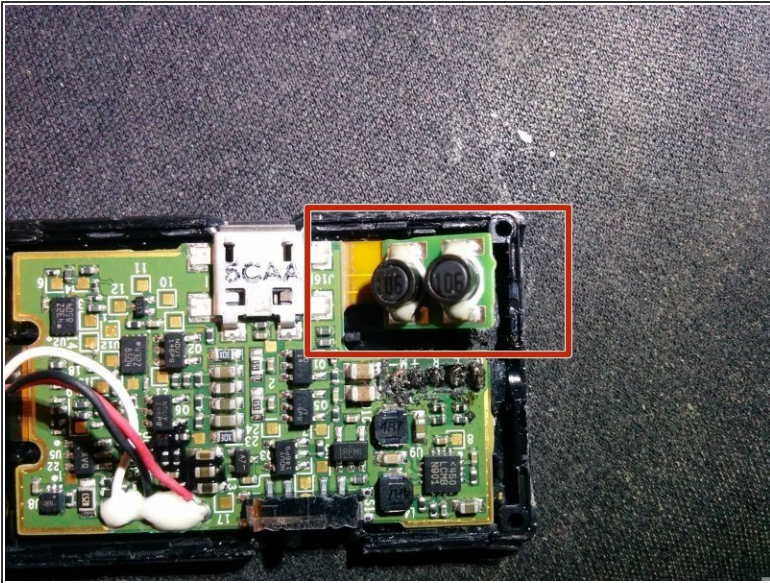
This document was generated on 2019-09-29 06:43:20 PM (MST).

INTRODUCTION

We have a few photos showing a REAL Bose QC20 and a FAKE Bose QC20 circuit board. (The REAL photos come from <https://www.head-fi.org/threads/bose-qui...> (bottom) and <https://imagebin.ca/v/2NN1A5BBBrCjf>. (With thanks to both) The FAKES are (unfortunately) from me.

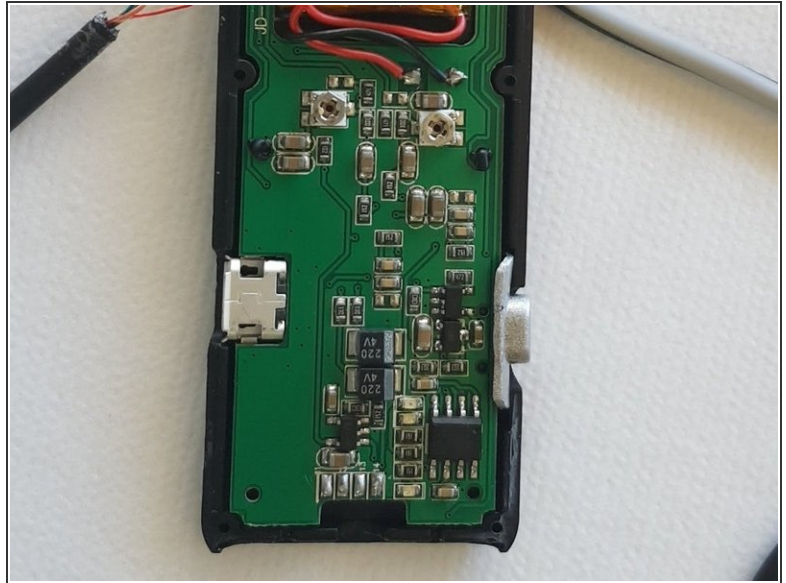
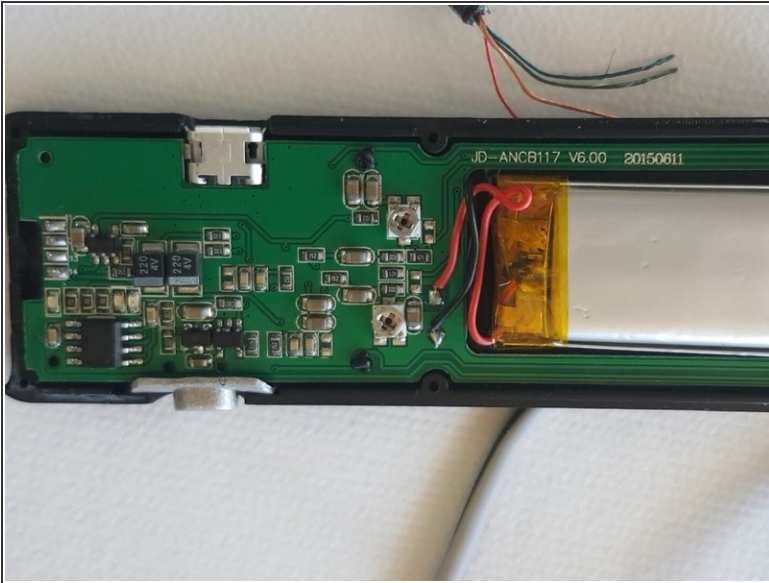
Also, thanks to Jordan Ditzler for his YouTube video on how to tell the difference between fakes and real without disassembly: <https://www.youtube.com/watch?v=VLgD9tOS...>

Step 1 — REAL vs. FAKE Bose QC20i circuit board comparison



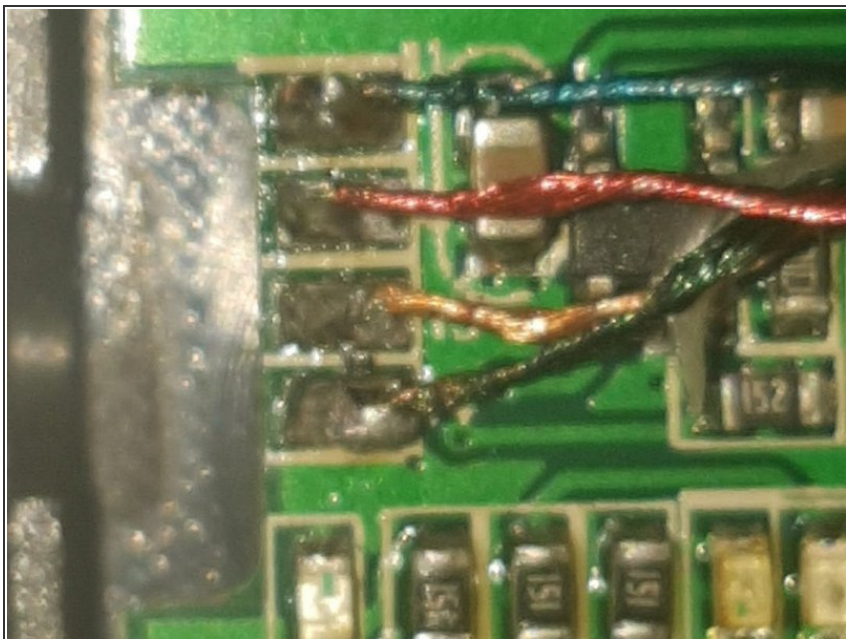
- These are REAL Bose QC20 circuit boards. Notice the large chokes (highlighted)
- Note that there are 3 connections (black, white and red) from battery to the board.
- Also, notice the battery connections (blk, wht, red wires) have white glue connecting them to the board.

Step 2



- These are photos of a FAKE Bose QC20 circuit board.
- Notice simple circuit compared to real.
- Battery has only 2 connections, and they are not in the right place.
- Also, notice there are no chokes on the board as there were in the real circuit board.
- The four solder points (left in first photo) and bottom (second photo) are where the headphone jack broke off of the controller on my first use.

Step 3



- So, if you were unlucky enough to have bought fake Bose QC20s, and your headphone jack broke off, here is the correct rewiring. Top to bottom: Green, Red, Yellow Black.
- (I got my money back from the seller -- hope you can too!)

To reassemble your device, follow these instructions in reverse order.