

Written By: Patrick

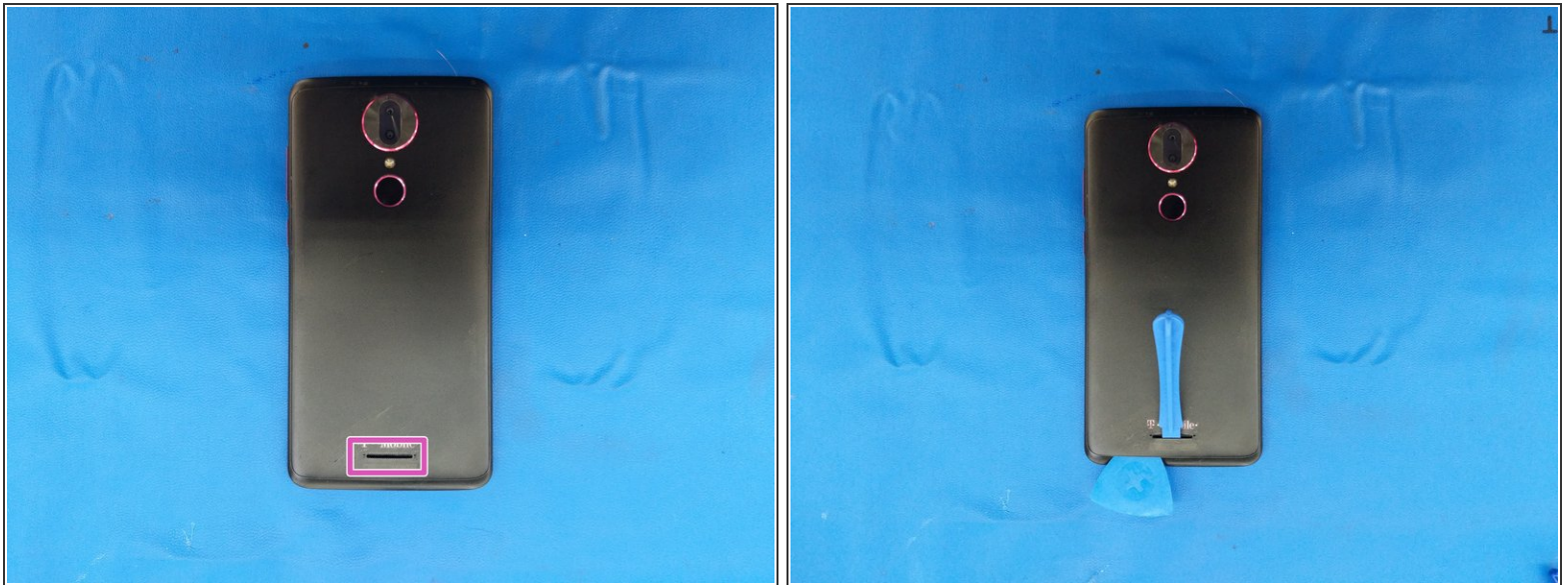




TOOLS:

- [Phillips #00 Screwdriver](#) (1)
- [iFixit Opening Tools](#) (1)
- [iFixit Opening Picks set of 6](#) (1)
- [Halberd Spudger](#) (1)
- [Tesa 61395 Tape](#) (1)
- [91% Isopropyl Alcohol](#) (1)

Step 1 — Removing the back



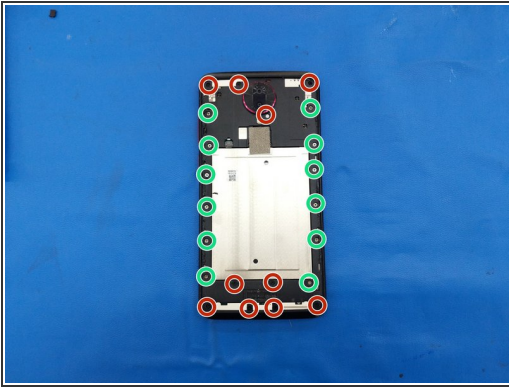
- The back of the phone is held on with a combination of plastic clips and adhesive.
- The entry point is the speaker grille near the bottom of the phone. Be careful not to insert the opening tool directly downward to avoid damaging the speaker.
- Insert a plastic opening tool in the hole in the back of the phone as shown to lift the back cover.
- Insert a guitar pick to keep the plastic cover lifted.

Step 2



- Work a guitar pick or opening tool around the edges of the back panel to disengage all clips.
- There is adhesive around the edges of the back panel as well as around the camera.
- ⚠ The fingerprint sensor is attached to the back panel of the phone. Be careful not to rip the flex cable!
- Insert the hook of a Halberd spudger into the small opening above the plastic part covering the fingerprint sensor and pry it off while covering it so it doesn't go flying away.
- Disconnect the fingerprint sensor flex cable with the flat end of a Halberd spudger or an opening pick and set the back panel aside.

Step 3 — Removing the midframe



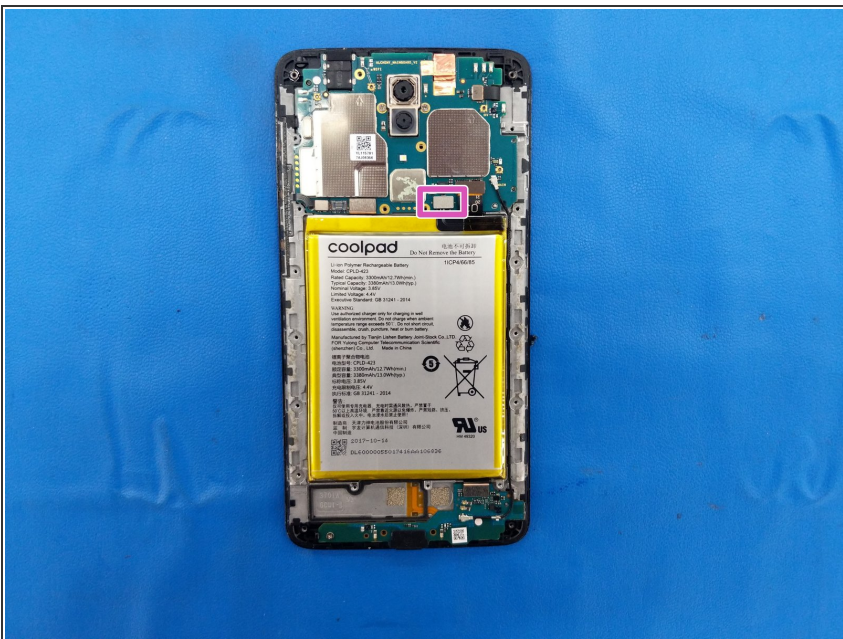
- Remove 10 black Philips screws (including one covered by a white sticker below the camera lens).
- Remove 12 silver Philips screws.
- Gently peel up the bottom half of the metal tape to reveal...
- Two more black Philips screws to remove.

Step 4



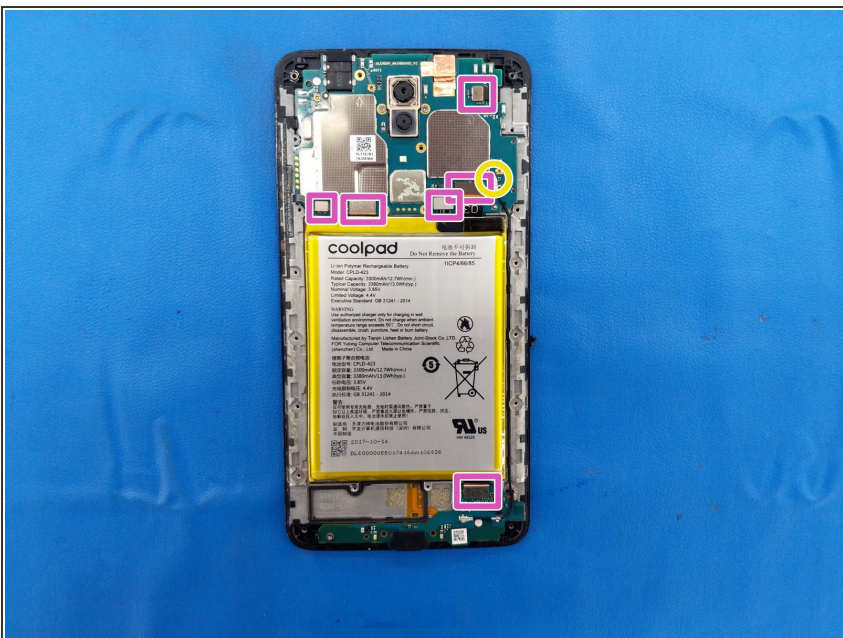
- The midframe is held on by strong plastic clips around the edges of the phone. Insert an opening tool or pick as shown near the SIM card slot
- Ensure that all screws have been removed, then work your way around the edges of the phone.
- Clips near the corners are particularly strong.

Step 5 — Remove the battery



- Disconnect the battery flex cable.
- The battery is held in by 3 vertical strips of adhesive. Use rubbing alcohol and/or heat to soften the adhesive.
- ⓘ If you are replacing the screen, skip this step and remove the battery last.

Step 6 — Display assembly (with frame)



- ⓘ These pictures show the battery still installed as it is easiest to remove the battery last.
- Disconnect 6 flex cables from the mother- and daughter-board.
- Disconnect the antenna cable and remove it from its channel on the frame.

Step 7



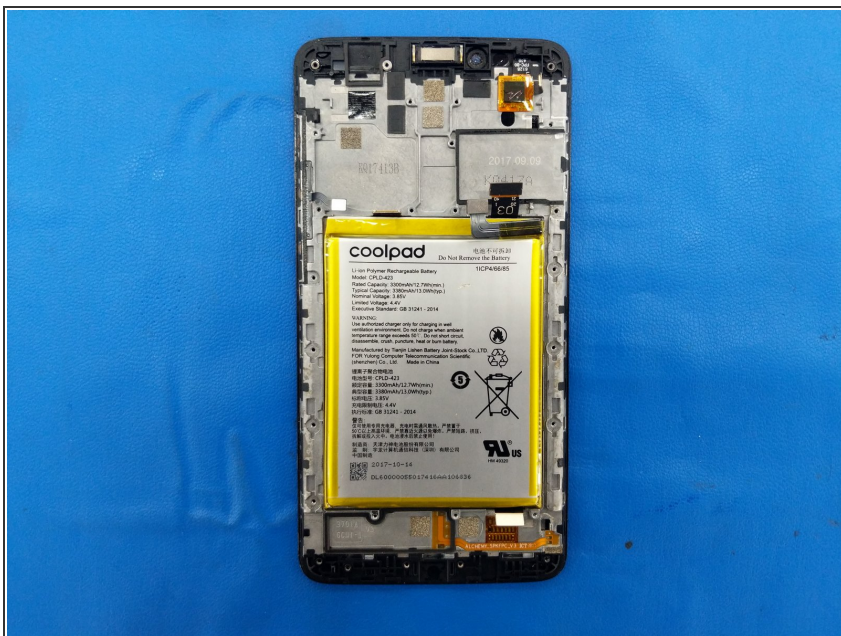
- Remove one Philips screw from the charging port assembly.
- ❗ The circuit board is held in by two clips: a plastic clip on the left side and a metal clip on the right side.
- To remove the circuit board, insert a plastic opening pick between the circuit board and the plastic clip, and gently bend the center of the circuit board upwards to disengage it.
- Using an opening pick, gently detach the weak adhesive underneath the circuit board and remove.

Step 8 — Removing the motherboard



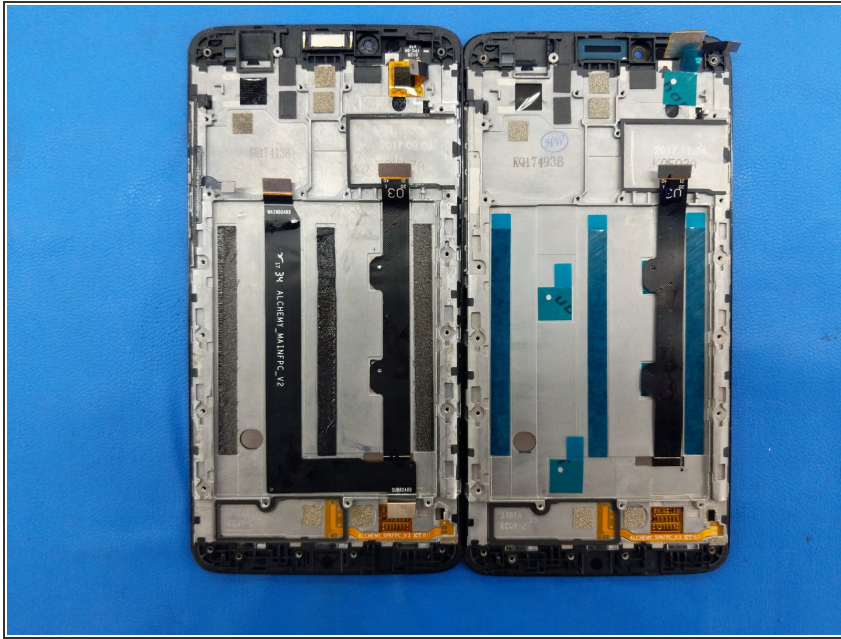
- Remove two Philips screws on either side of the rear-facing camera.
- ⓘ Like the charging port assembly, the motherboard is held in with clips as well. Use the same process to remove the motherboard.
- ⚠ The front and rear cameras are adhered to the frame *and* connected to the motherboard with flex cables. As you lift the motherboard, check underneath and disconnect the cameras from the motherboard with the flat end of a Halberd spudger if necessary.

Step 9 — Remove the battery



- ⓘ The battery is held in with 3 vertical strips of adhesive.
- Use heat and/or rubbing alcohol to soften the adhesive, then use opening picks to remove the battery.

Step 10 — Compare with replacement part



- Compare the broken and the replacement part and transfer over all missing parts.
- For example, this part needed the volume/power button flex cable and the ribbon cable connecting the charging port assembly transferred.

To reassemble your device, follow these instructions in reverse order.