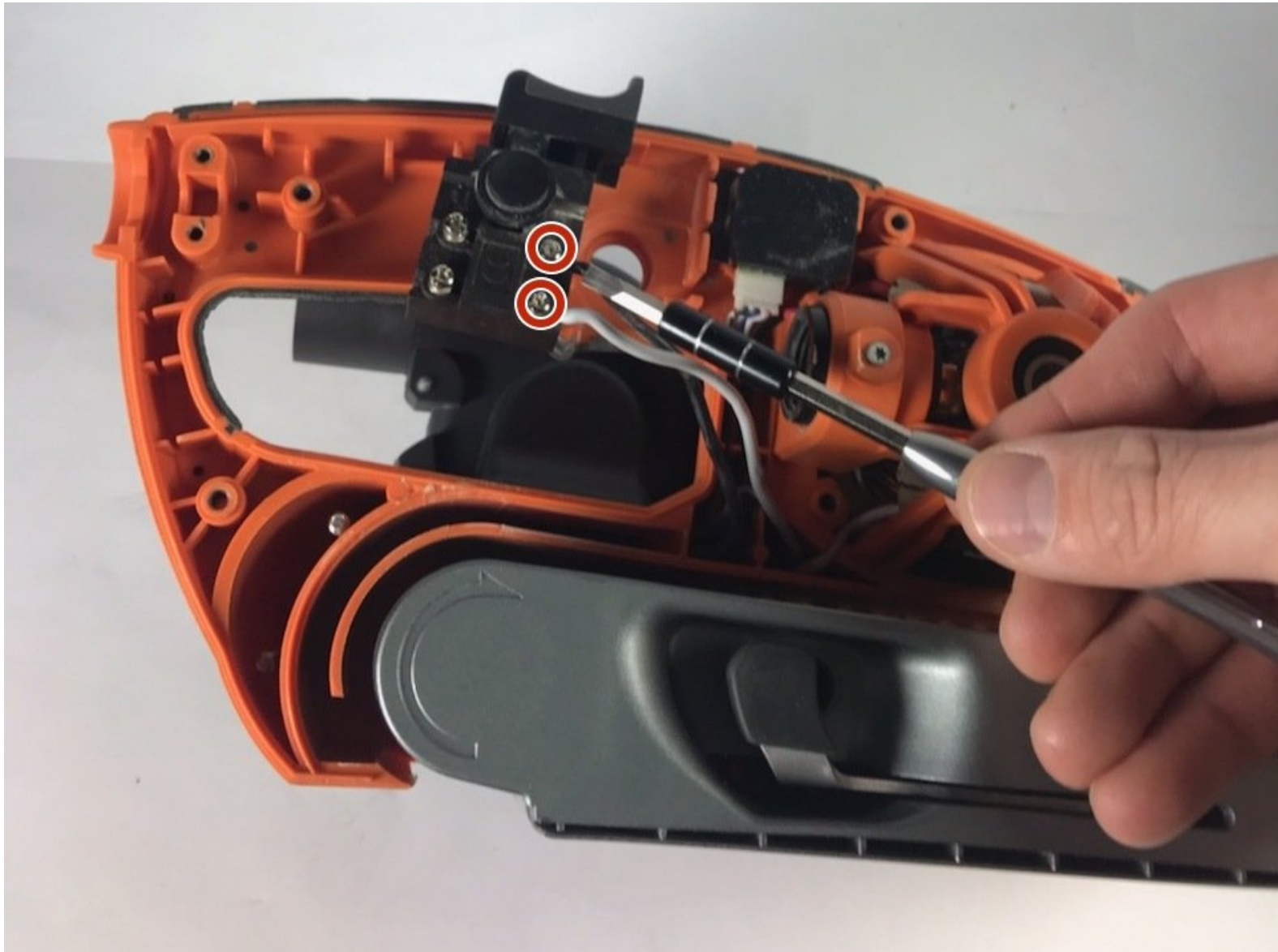




# RIDGID Belt Sander R2740 On/Off Switch Replacement

How to replace a RIDGID Belt Sander R2740 On/Off Switch.

Written By: Auddie Reynolds



## INTRODUCTION

If your RIDGID R2740 Belt Sander won't turn on, the on/off switch may be defective and need to be replaced. This guide will walk you through how to replace the on/off switch on your RIDGID R2740 Belt Sander.



### TOOLS:

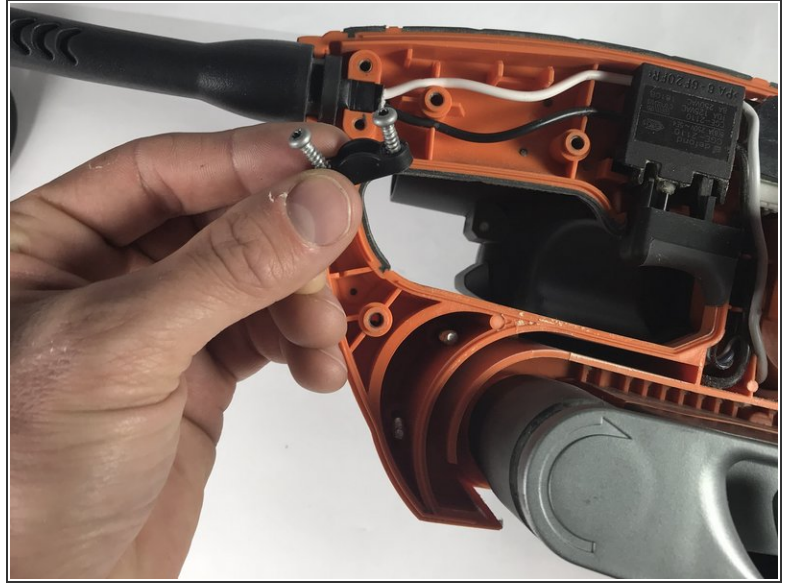
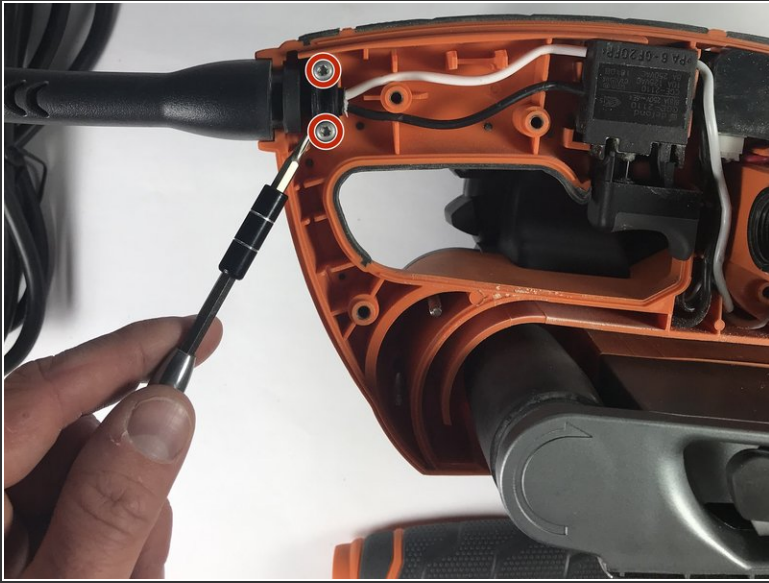
- [T20 Torx Screwdriver](#) (1)
  - [T10 Torx Screwdriver](#) (1)
  - [Phillips #3 Screwdriver](#) (1)
-

## Step 1 — Power Cord



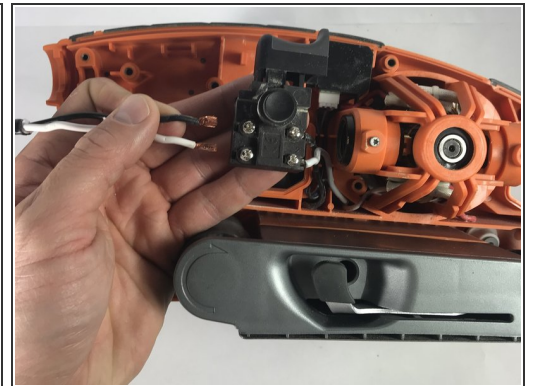
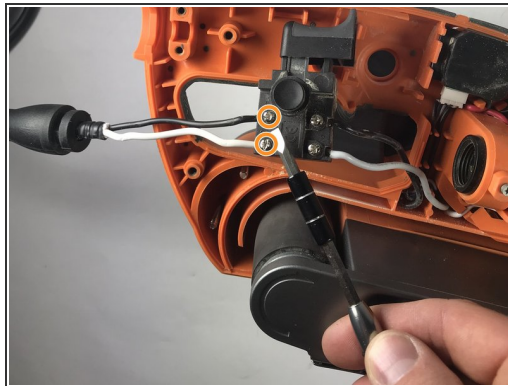
- Orient the belt sander so that the RIDGID logo is facing you.
- Remove the six 19 mm and three 51 mm T20 screws that hold the cover into place.
- Remove the cover from the belt sander.
- ⓘ Make sure you remember the correct placement of each screw.

## Step 2



- Remove the two 16 mm T10 screws.
- Remove the support bracket that holds the power cord into place.

## Step 3



- Lift the power cord from the resting grooves.
- Rotate the switch so that the lock-on button is facing you.
- Loosen the two 8 mm Phillips #3 screws.
- Pull the two wires away from the switch.



## Step 4 — On/Off Switch



- Undo the two screws on the backside of the switch with a Phillips #3 screw driver.

## Step 5



- Pull out the wires from the switch.

To reassemble your device, follow these instructions in reverse order.