



RIDGID R32104 Trigger Replacement

This guide will help you replace a faulty trigger for the RIDGID R32104 saw.

Written By: Lucas Pimentel



INTRODUCTION

If the trigger in your Worm Drive Saw won't respond when pressed or appears to be broken, use this guide to remove and replace your trigger switch and trigger. All you need are the standard Phillips 2 Screwdriver and Torque 20 Screwdriver, in order to remove the two types of screws involved with this replacement.




TOOLS:

- [Phillips #2 Screwdriver](#) (1)
 - [T20 Torx Screwdriver](#) (1)
-

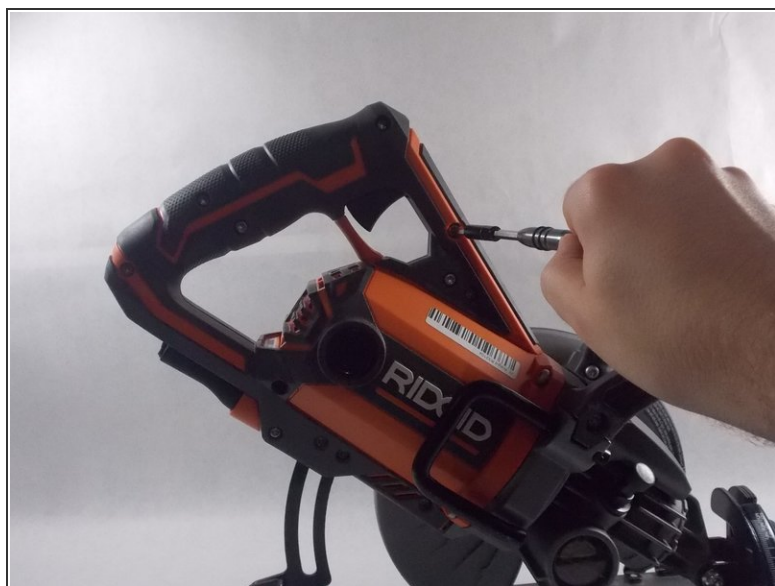
Step 1 — Trigger



 Turn off your saw and unplug before starting.

- Place the Worm Drive Saw down and adjust the base plate, so that way the main housing assembly and handle set is easily accessible.

Step 2



- Using the Torque 20 screwdriver, remove the twelve 3/10 cm screws holding the handle set together.

Step 3



- Carefully remove the handle set from the main housing assembly.

Step 4



- Place the Worm Drive Saw on its side to help remove the trigger.
- Use the Torque 20 screwdriver to remove the single 3/10 cm screw that attaches the trigger switch to the handle set.

Step 5



- Use the Phillips 2 screwdriver to remove the four 3/10 cm screws holding the trigger and four wires, from the main housing assembly, in place.

Step 6



- Remove the trigger switch and trigger from the handle set.

To reassemble your device, follow these instructions in reverse order.

This document was generated on 2020-01-18 06:01:19 PM (MST).

