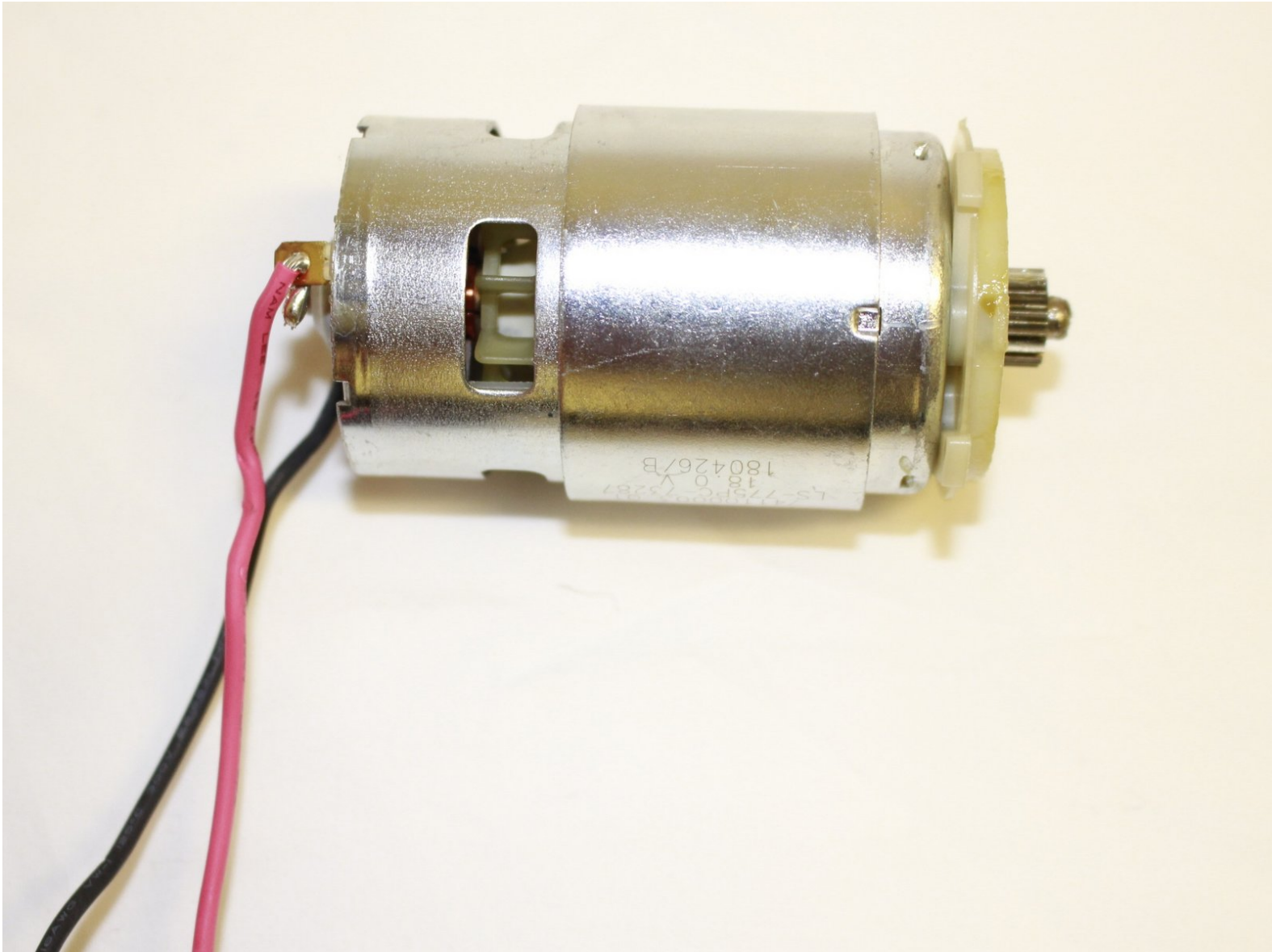




RIDGID R860052 Motor Replacement

Use this guide to learn how to replace the motor in your RIDGID R860052.

Written By: Andrea Hernandez



INTRODUCTION

If your drill does not turn on with a fully charged battery, the motor of your drill might be damaged. This guide will provide guidance to the process of replacing a defective motor in a RIDGID R860052.

TOOLS:

- [T10 Torx Screwdriver](#) (1)
 - [Soldering Iron](#) (1)
-

Step 1 — Motor



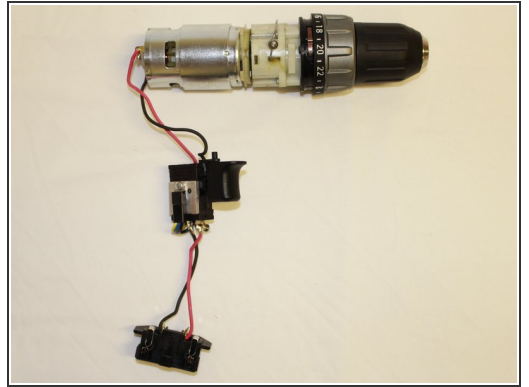
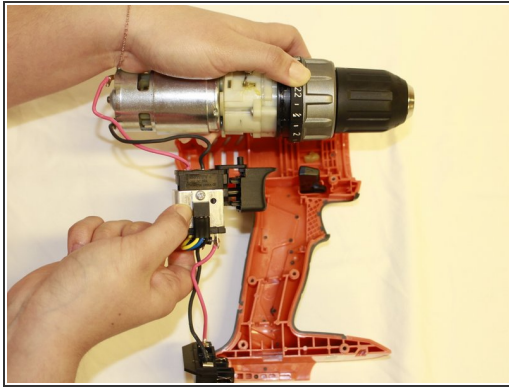
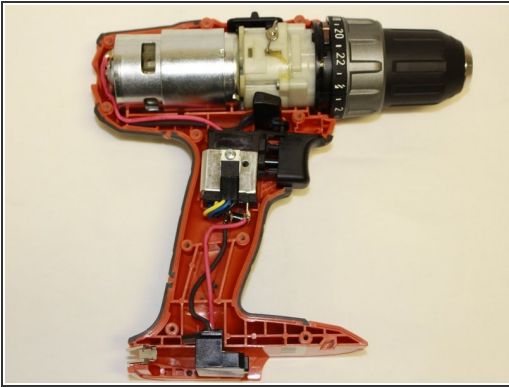
- ❗ Remove the battery from the drill before you begin.
- Use a T10 Torx screwdriver to remove the ten screws on the information label side of the drill.
- ❗ These ten screws are 19 mm long.

Step 2



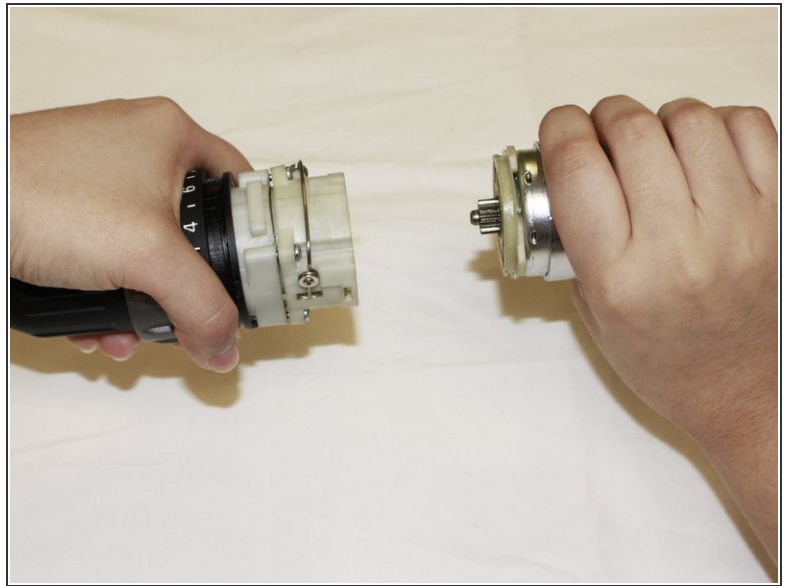
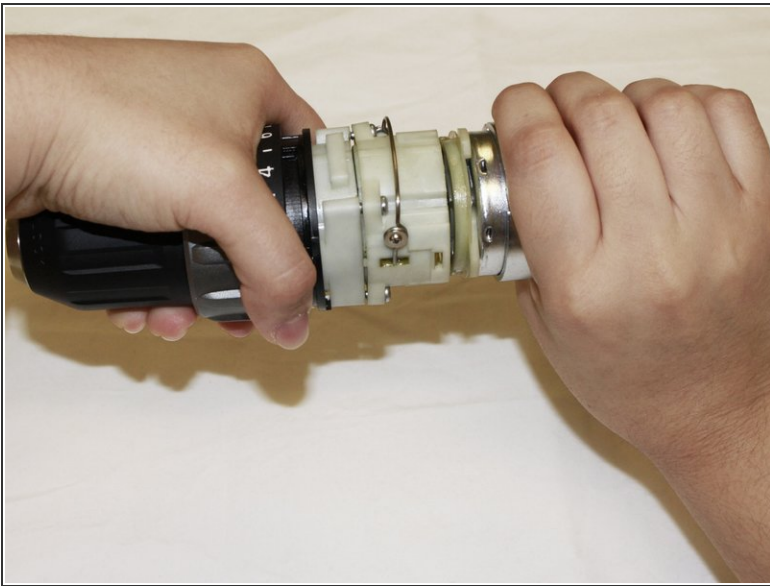
- Lift off and remove the cover with the informational label.

Step 3



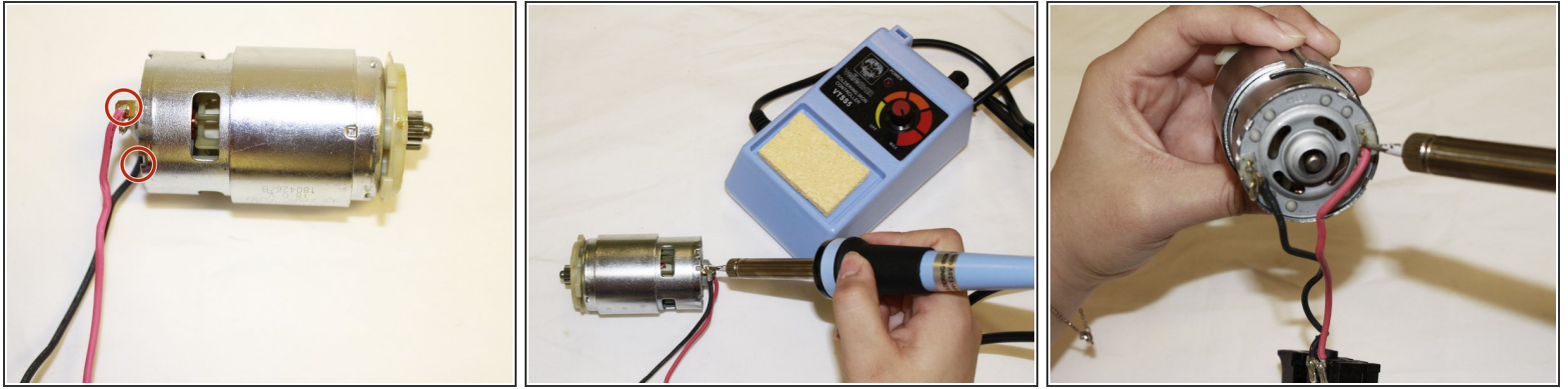
- Remove the switch assembly, chuck, and motor from all drill covers.

Step 4



- Twist the chuck and motor in the opposite direction and gently pull them apart.

Step 5



- Desolder the black and red wires from the motor.
- Replace motor and resolder the black and red wires back onto the motor.

⚠ Be aware of the heat level of the metal part on the soldering tool.

To reassemble your device, follow these instructions in reverse order.