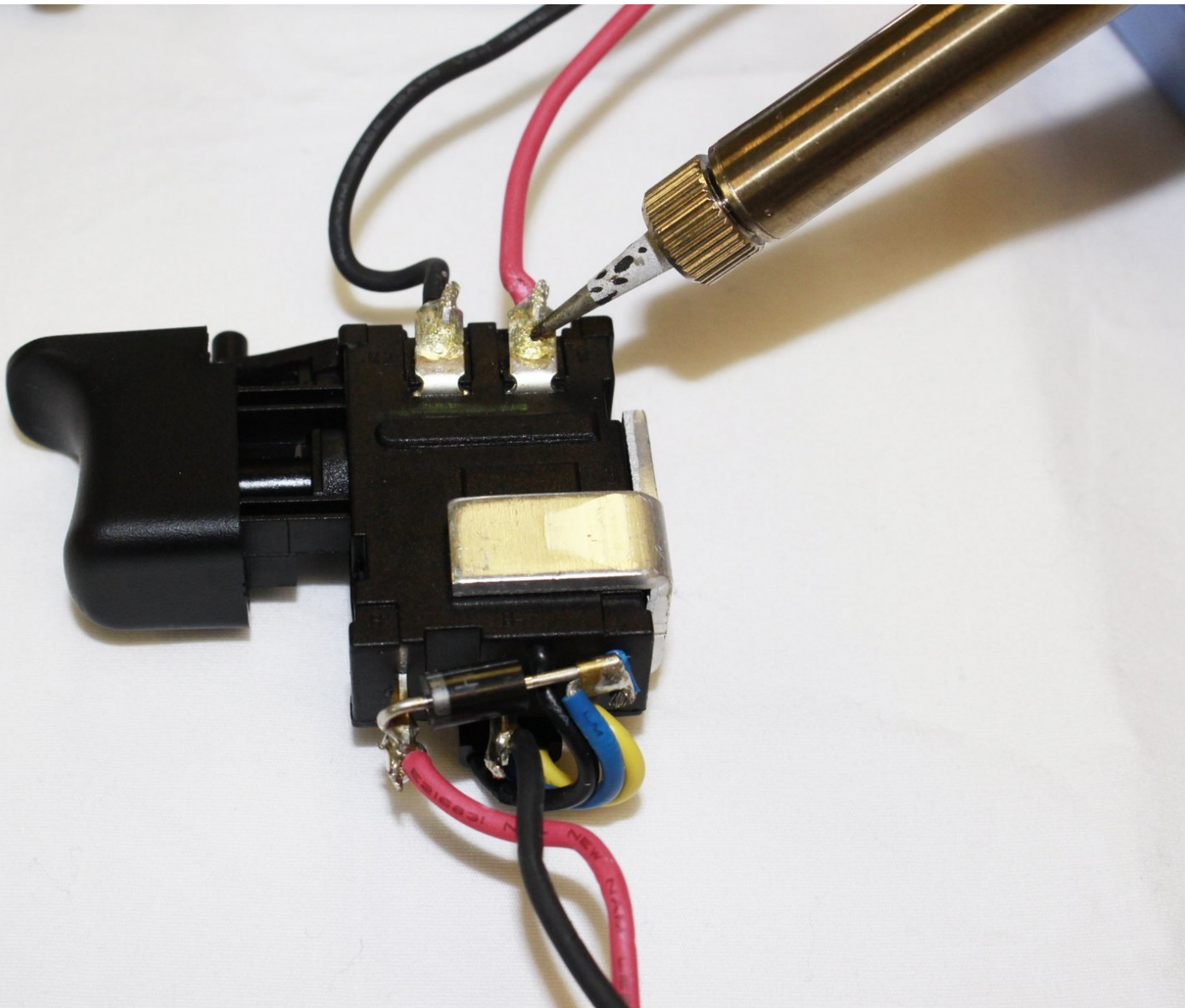




RIDGID R860052 Switch Assembly Replacement

Use this guide to learn how to replace the switch assembly in your RIDGID R860052.

Written By: Anna Wu



INTRODUCTION

If the drill does not turn on after pressing the trigger or it does not stop turning even after you release the trigger, the switch assembly might be damaged. This guide will provide guidance to the process of replacing a broken switch assembly in a RIDGID R860052.



TOOLS:

- [T10 Torx Screwdriver](#) (1)
 - [Soldering Iron](#) (1)
-

Step 1 — Switch Assembly



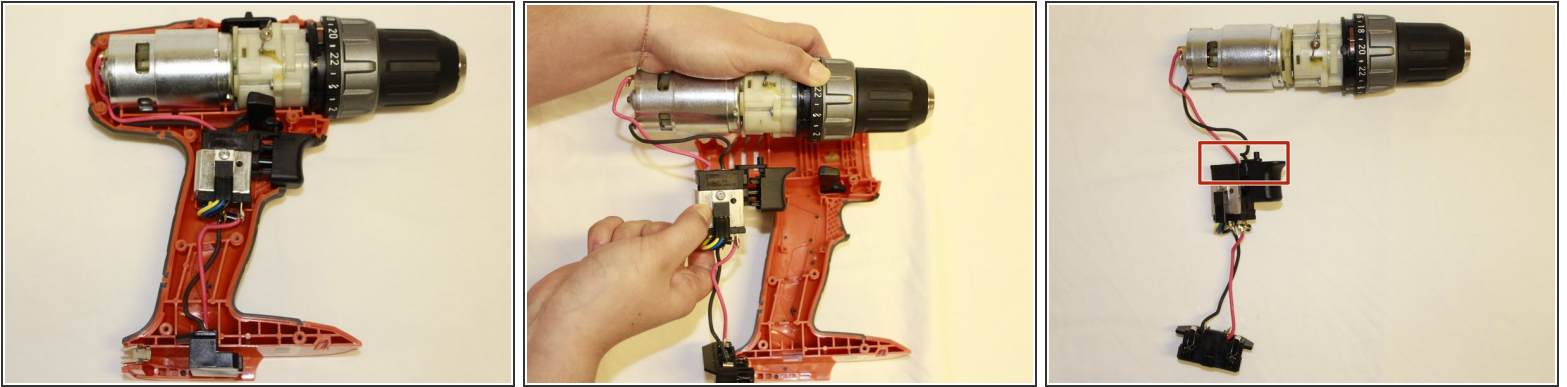
- ❗ Remove the battery from the drill before you begin.
- Use a T10 Torx screwdriver to unscrew the ten screws on the information label side of the drill.
- ❗ These ten screws are 19 mm long.

Step 2



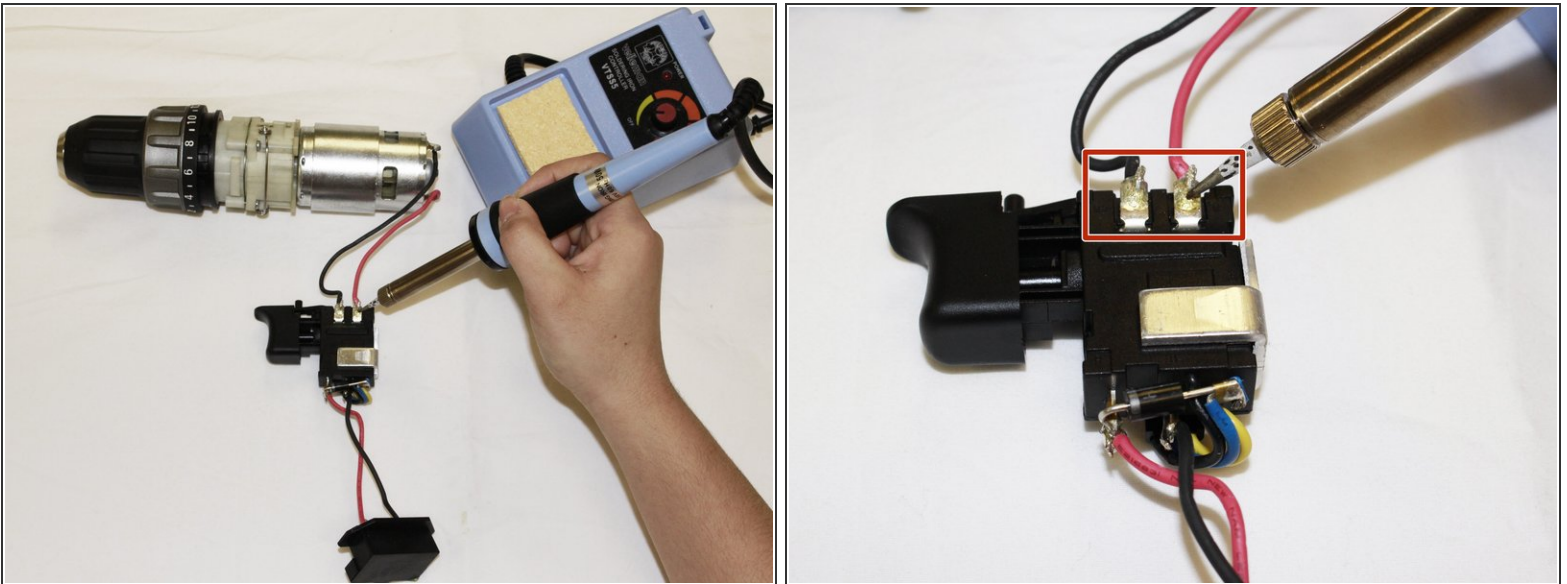
- Lift off and remove the cover with the informational label.

Step 3



- Remove the switch assembly, chuck, and motor from all drill covers.
- Check if all wires are connected to the switch assembly and motor as illustrated in the image.

Step 4



- To replace the switch assembly, desolder the black and red wires and replace with a new switch assembly.

⚠ Be aware of the heat level of the metal part on the soldering tool.

To reassemble your device, follow these instructions in reverse order.