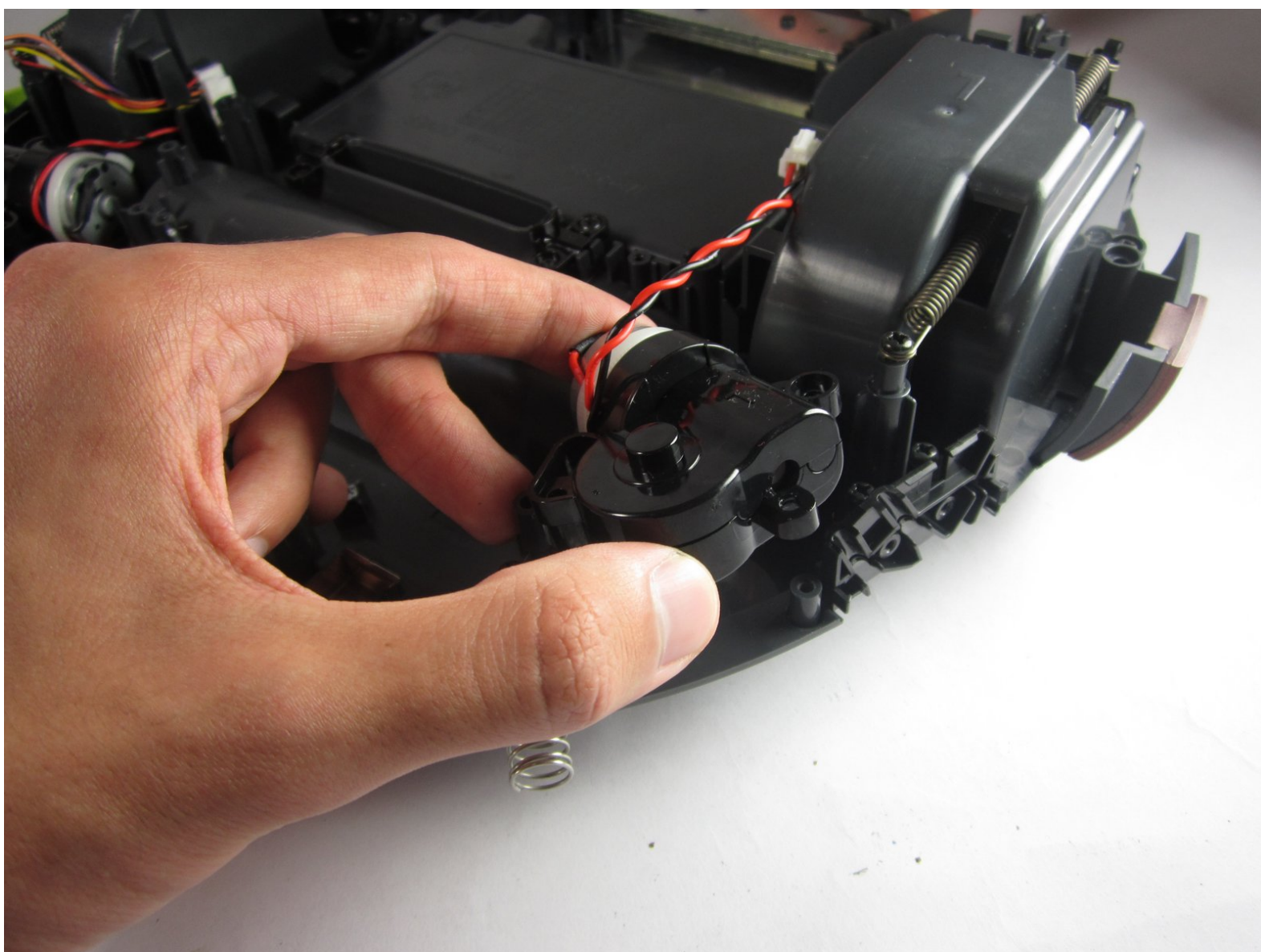




RYDIS H68 Pro Side Brush Motor Replacement

The motor that controls the side brush may be defective causing the side brush to stop spinning in your RYDIS H68 Pro. Replacement guide here.

Written By: jude auguste



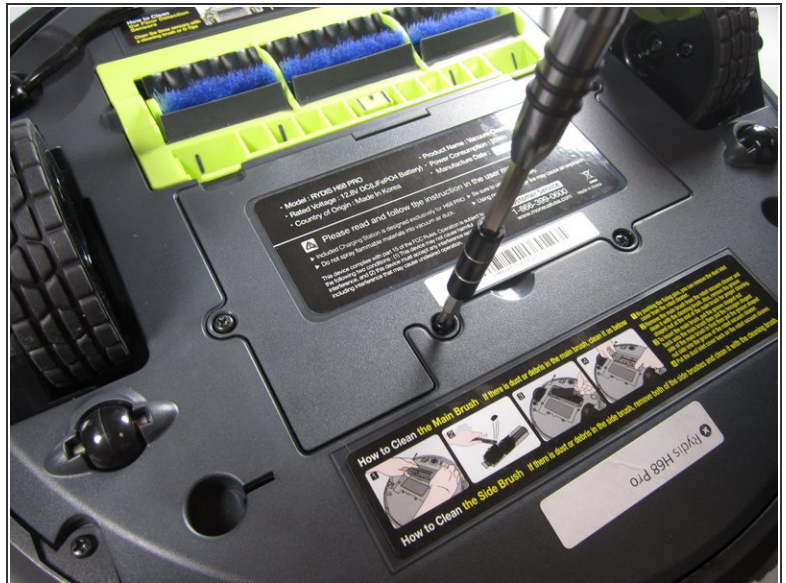
INTRODUCTION

The side brushes are a problem many people encounter when dealing with the RYDIS H68 Pro. This guide will show you how to fix a side brush issue.

TOOLS:

- [Phillips #1 Screwdriver](#) (1)
 - [Metal Spudger](#) (1)
-

Step 1 — Battery



- Flip the vacuum over so that the wheels are facing you.
- Use a Phillips #1 screwdriver to remove the four 10mm screws that surround the battery cover.

Step 2



- Lift up the battery cover to reveal the battery.
- Remove the battery.

Step 3 — Bumper



- Remove the eight 10 mm Phillips #1 screws.

Step 4



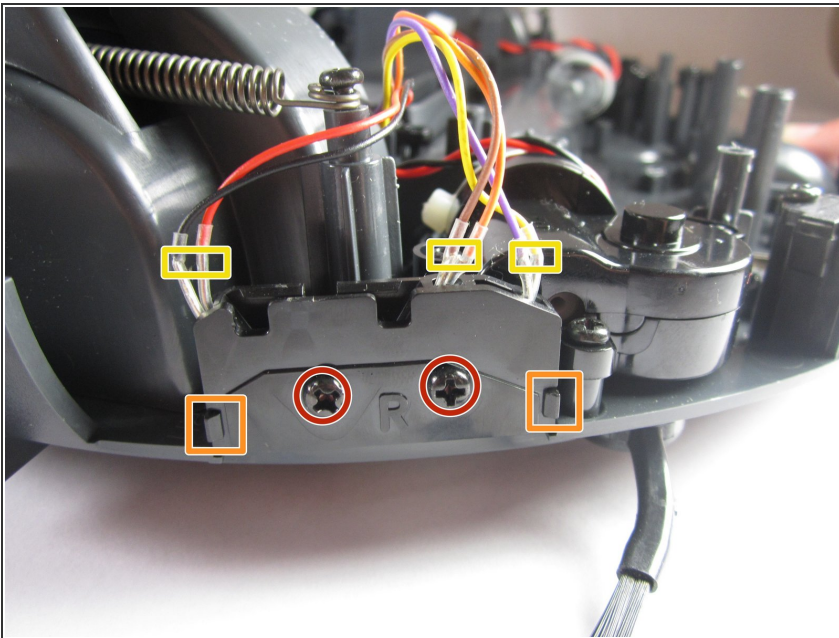
- Hold the front bumper and pull it off.
- ⓘ It requires a lot of force to pull the bumper off.

Step 5



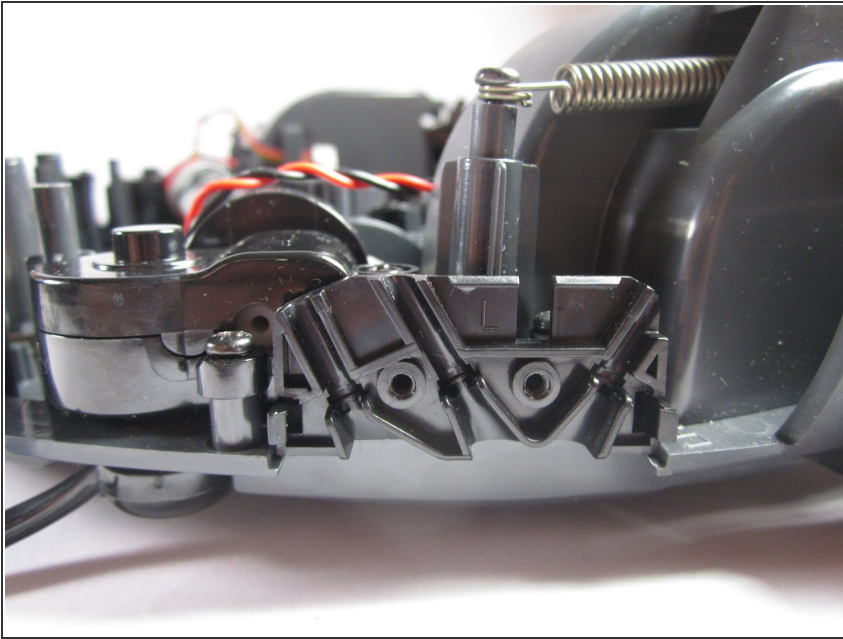
- Pry off the back bumper by going around the entire top of the bumper with the metal spudger.

Step 6 — Side Brush Motor



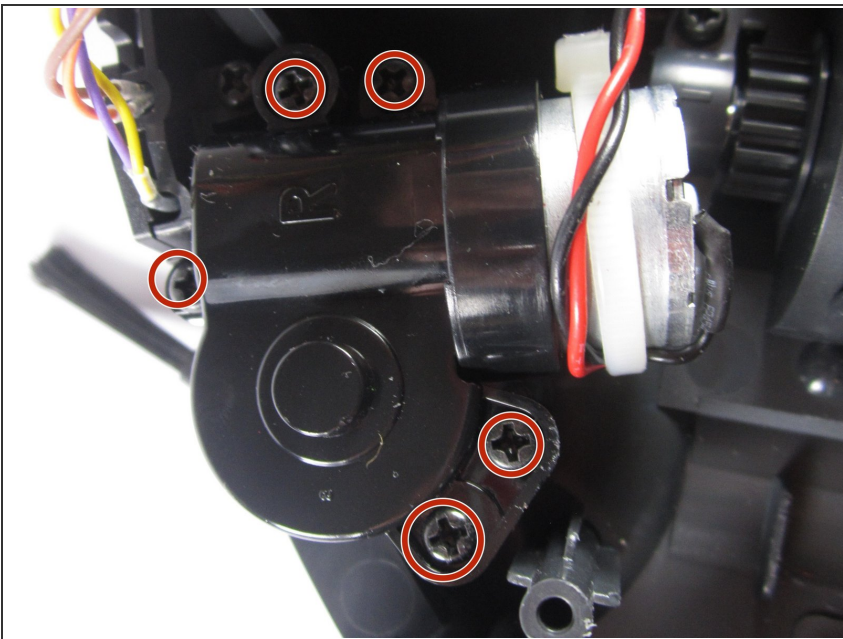
- Begin by unscrewing the 2 10mm screws using a Phillips #1 screwdriver.
 - Unlatch the latches indicated. It can be easily done with your finger.
 - Once unsecured, the covering for the sensors can easily be removed allowing access to the sensors.
- ⓘ The reason for these first few steps is to avoid damaging the signal wires for the sensor.

Step 7



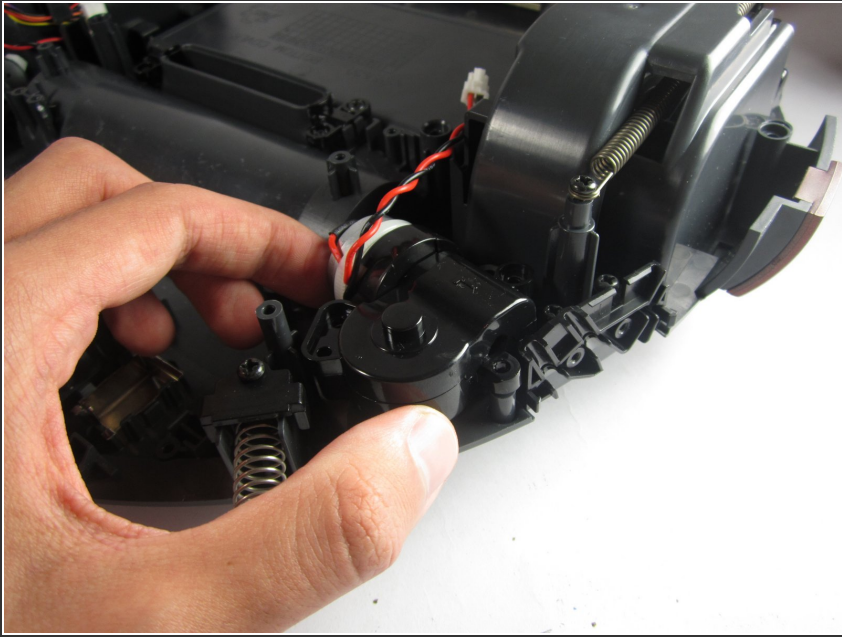
- This step just shows you how everything looks after the previous steps were completed.
- ⓘ There are sensors on both the left and right side. This can be done for either side.

Step 8



- Unscrew the five 10mm screws using a Phillips #1 screwdriver.

Step 9



- The side brush motor can now be removed by lifting it up.

To reassemble your device, follow these instructions in reverse order.