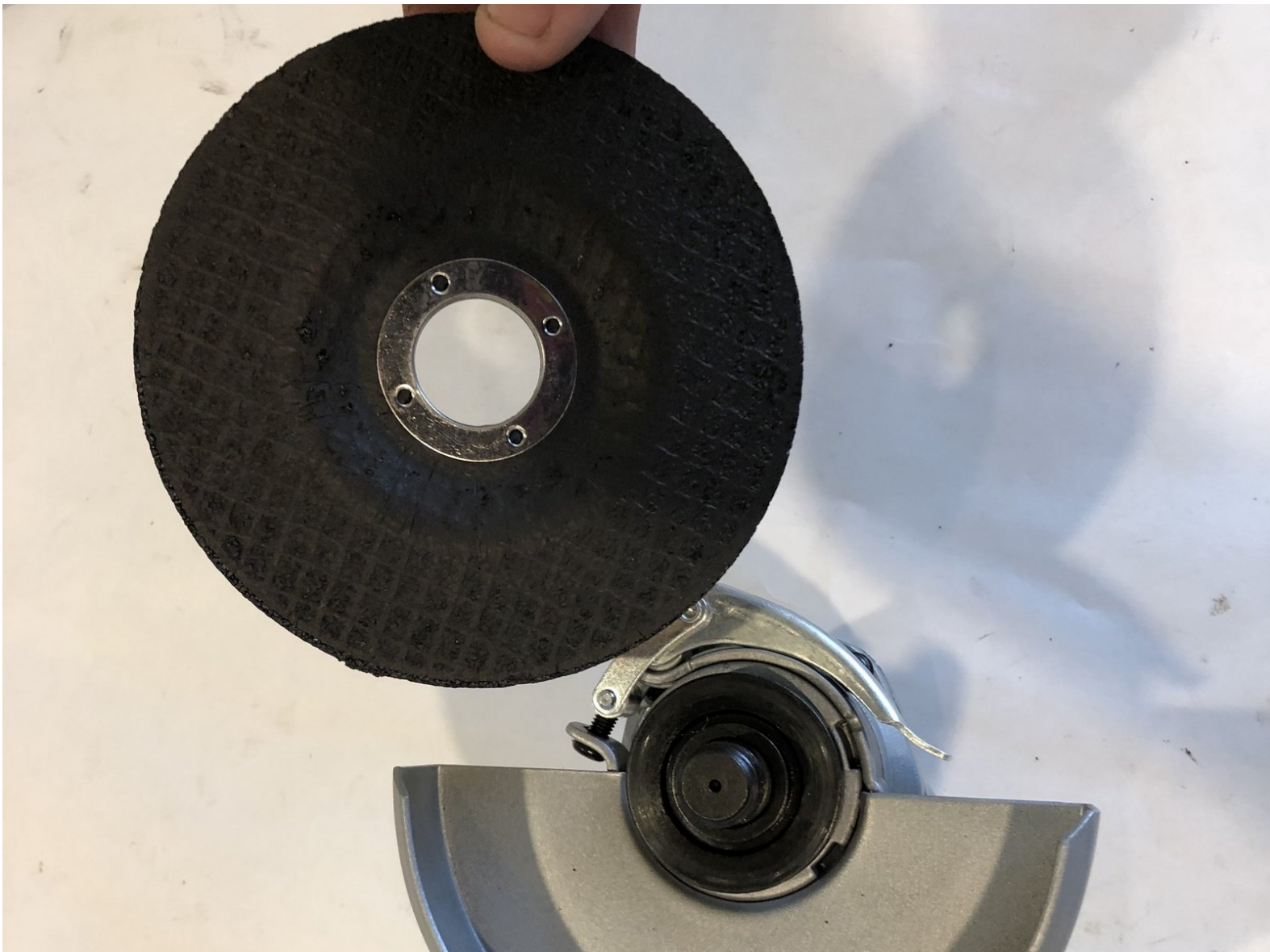




# RYOBI AG454 Blade Replacement

Use this guide to replace the blade in your Ryobi AG454.

Written By: Erica Faulkner



## INTRODUCTION

If the blade of your angel grinder is worn out, it is probably due for replacement. This guide will go over how to detect problems with the blade and how to fix those issues. A couple things to note before proceeding with this guide:

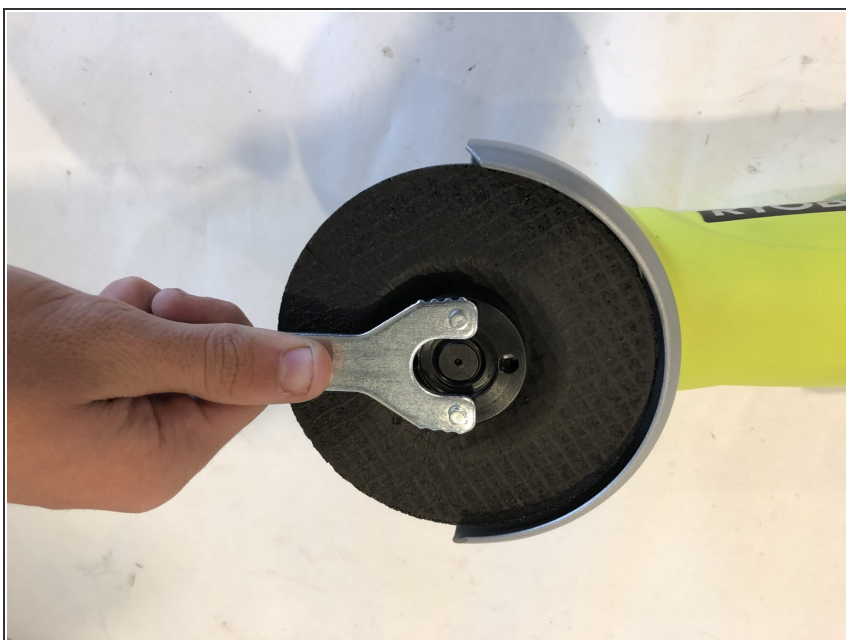
- Our device didn't come equipped with a blade, so you may need to take extra steps to remove the blade from your device.
- The tools used in this guide are attached to the device itself, so you won't be needing any extra tools for this guide.

## Step 1 — Blade



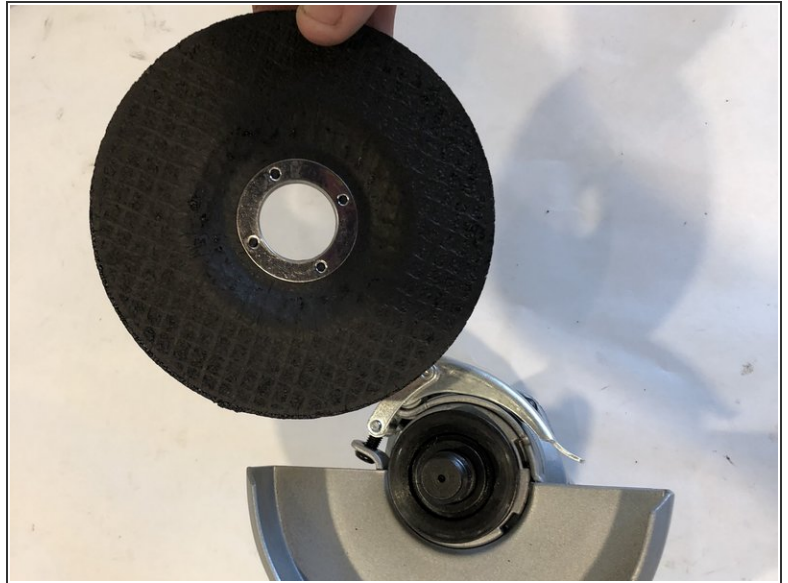
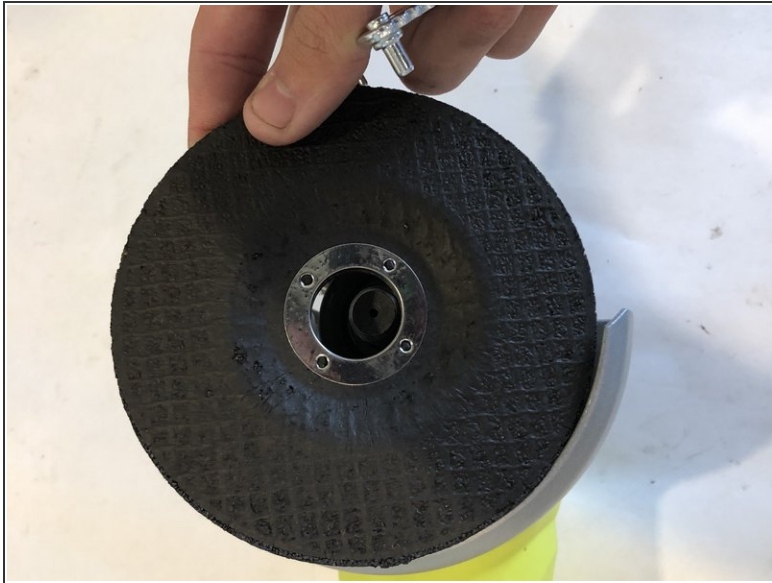
- Remove the wrench from the detachable handle.

## Step 2



- Ensure that the spindle lock is engaged.
- Remove the clamp nut from top of disc with wrench that's located inside the handle.

### Step 3



- Remove the grinding wheel from the device.

To reassemble your device, follow these instructions in reverse order.