



RYOBI AG454 Rotator Handle Replacement

Use this guide to replace the rotator handle in your Ryobi AG454.

Written By: Erica Faulkner



INTRODUCTION

When your handle starts to have malfunctions fix them soon as possible for the best performance of the device. This device guide will go over a couple of problems we found with the handle. For instance, if you're noticing that your handle is moving while you're performing a task, this guide will help you fix that.



TOOLS:

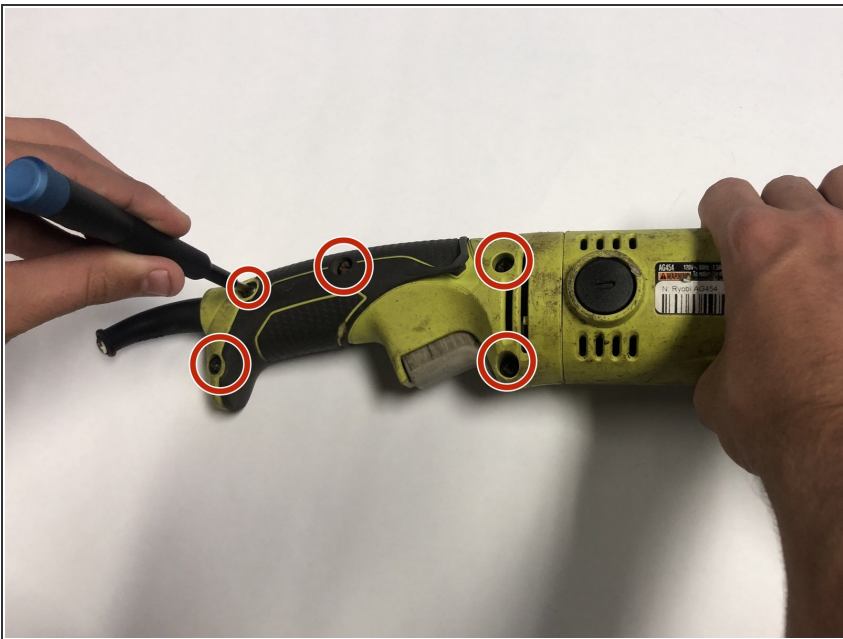
- [Phillips #1 Screwdriver](#) (1)
-

Step 1 — Rotator Handle



- Lay the handle on it's side, with the screws facing up.

Step 2



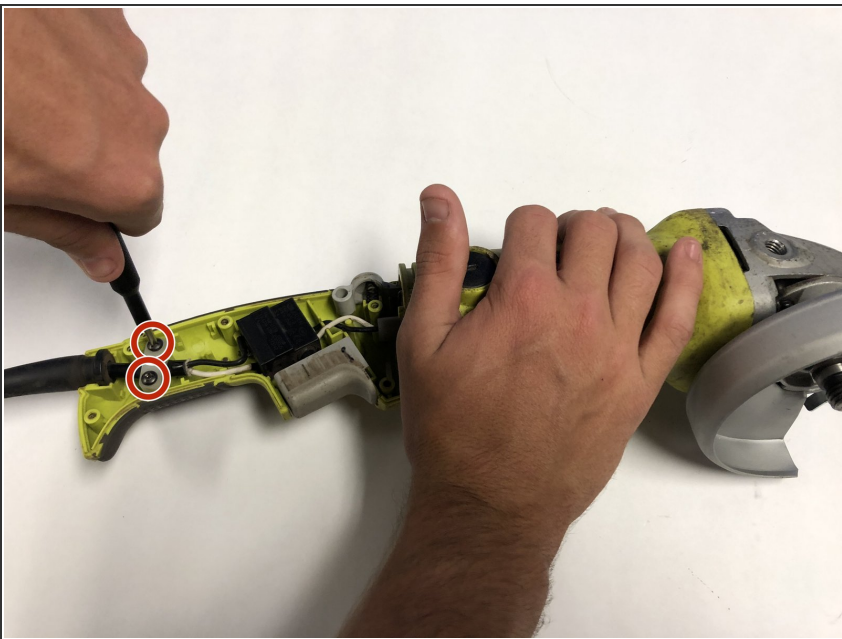
- Remove the five 14mm screws from the rotating handle using the Phillips #1 screwdriver.

Step 3



- Take the top part of the handle off.

Step 4



- Unscrew the two 14mm screws from the clear bracket using the Phillips #1 screwdriver.
- Remove the bracket.

Step 5



- Push handle rotation latch and separate the rest of the handle from main body.

To reassemble your device, follow these instructions in reverse order.