



RYOBI P422 Grinding Head Assembly Replacement

This guide will show you how to remove the main cover for the driving mechanism of your grinder's blade and spindle. If the main gear is damaged, you can order a replacement head assembly component from RYOBI. [[RYOBI Parts List w/ ID #'s and Names](#)]

Written By: Thomas Napert



INTRODUCTION

If your grinder begins to malfunction because of gear issues, it's time to replace the grinding head assembly. The link below contains the information necessary to order a replacement from RYOBI's home webpage.

[RYOBI Parts List w/ ID #'s and Names](#)

[Click on link to "Power Tool Parts Store"](#)



TOOLS:

- [T20 Torx Screwdriver](#) (1)

Step 1 — Battery and Handle



- To remove the battery press down on the two buttons located on each side of the battery and pull away from the body of the grinder.
- To remove the handle hold grinder with one hand and use the other hand to unscrew the handle with a counter-clockwise motion

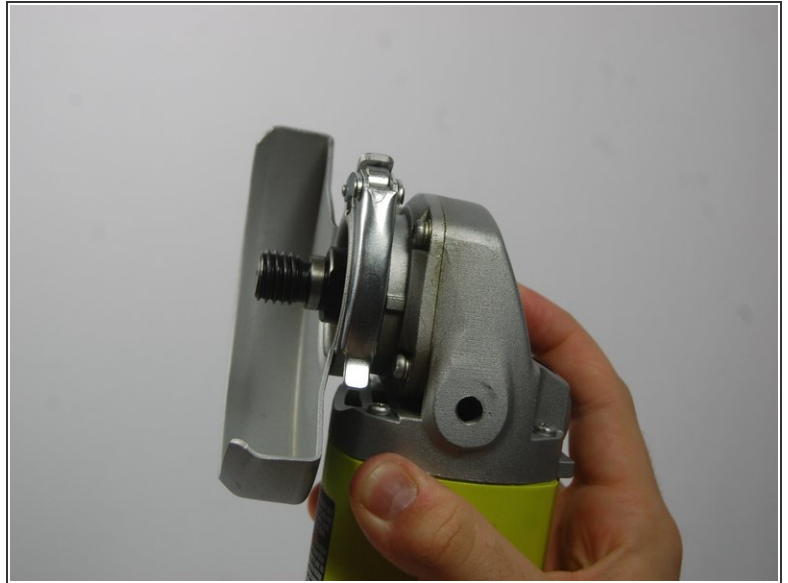
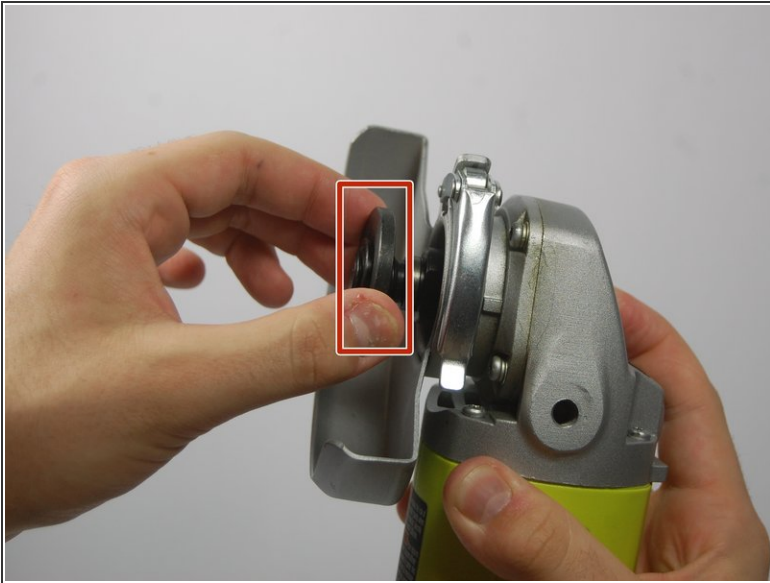
Step 2 — Wheel Guard



⚠ Do not perform this task immediately after using the grinder for grinding/cutting. The blade will be too hot to touch and could result in injury.

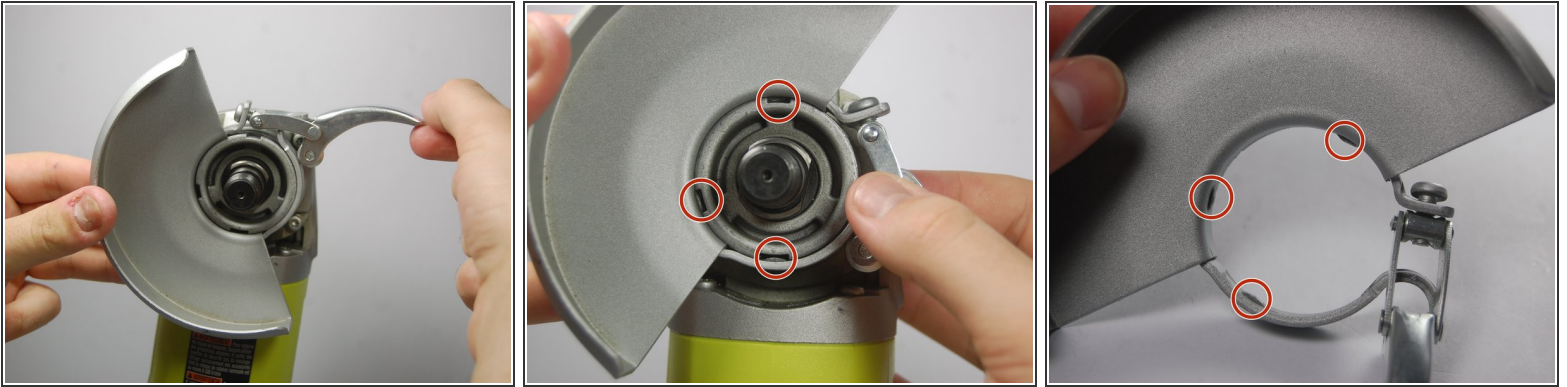
- Fully press the spindle lock button.
- With the spindle lock button held down, use the wrench provided to loosen the clamp nut. Once loose, you can use your fingers to unscrew the nut completely

Step 3



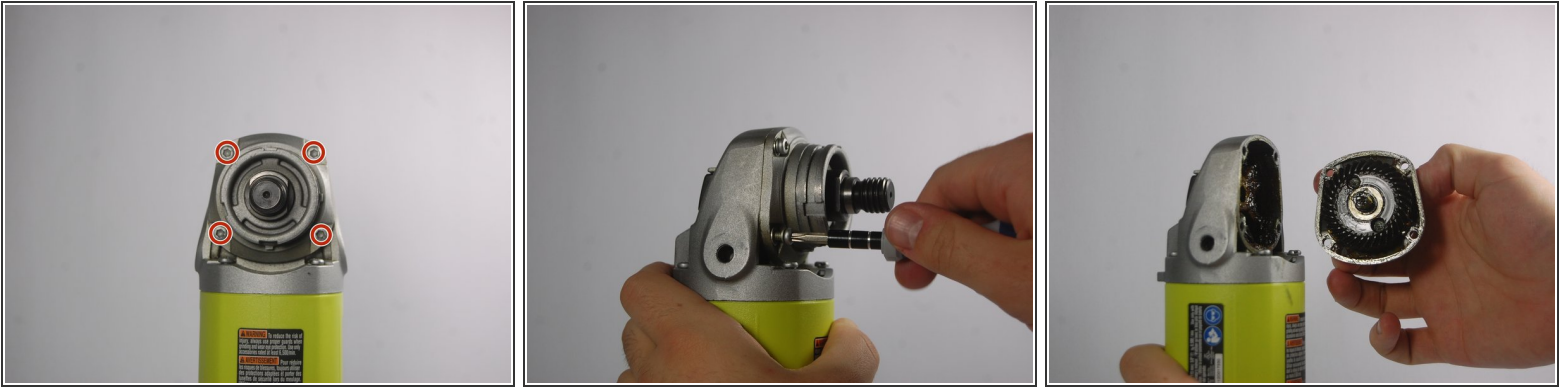
- Remove your grinding/cutting tool by simply pulling it off the spindle.
- Next remove the disc flange (a.k.a spacer) by pulling it off of the back end of the spindle.
- ⓘ The disc flange has two small raised edges on its back side. These ridges need to be aligned with the two flat faces at the back of the spindle lock when reassembled. This will ensure a safe, snug fit for your grinding blades.

Step 4



- Lift the clasp on the grinder guard. Make sure the clasp is completely loosened before proceeding.
- Rotate the grinder guard so that the three notches on its interior align with the three slots on the grinding head assembly.
- Once aligned, simply pull the guard off.

Step 5 — Grinding Head Assembly



- Remove the four 1.4 cm screws from the grinding head assembly using a Torx T20 screwdriver.
- With the screws removed, the grinding head assembly can be removed from the rest of the head with a gentle pull.
- ⓘ If there is no visible damage to either the pinion or gear inside the grinder head, the issue may stem from a lack of lubrication. Clean the interior of the grinder head before applying new lubricating grease to the pinion and gear.
- ★ When replacing the grinder head, make sure that the head edges are flush with the edges of the gear case assembly (The larger half of the head assembly).

To reassemble your device, follow these instructions in reverse order.