



Raleigh M20 Bicycle Rear Rack Replacement

This guide will show you how to install a rear rack on a bicycle.

Written By: Alyssa Compania



INTRODUCTION

This guide demonstrates how to remove and replace a rear rack from the Raleigh M20 bicycle. This requires the removal of the old rear rack before replacing the new rear rack.



TOOLS:

- [Phillips #1 Screwdriver](#) (1)



PARTS:

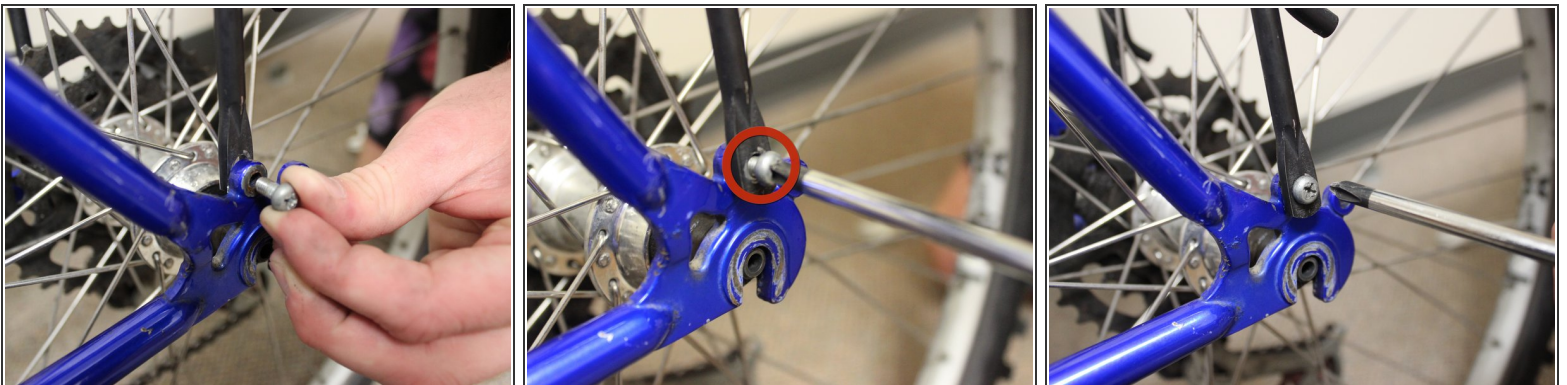
- [Bicycle Rear Rack](#) (1)

Step 1 — Bicycle Rear Rack



- Make sure that the bike is upright and stable.
- ❗ With both hands, place the rear rack on the rear wheel of the bike. Take note of where the rear rack will attach on the bike.
- Make sure that the rear rack is fitted on the bike.

Step 2



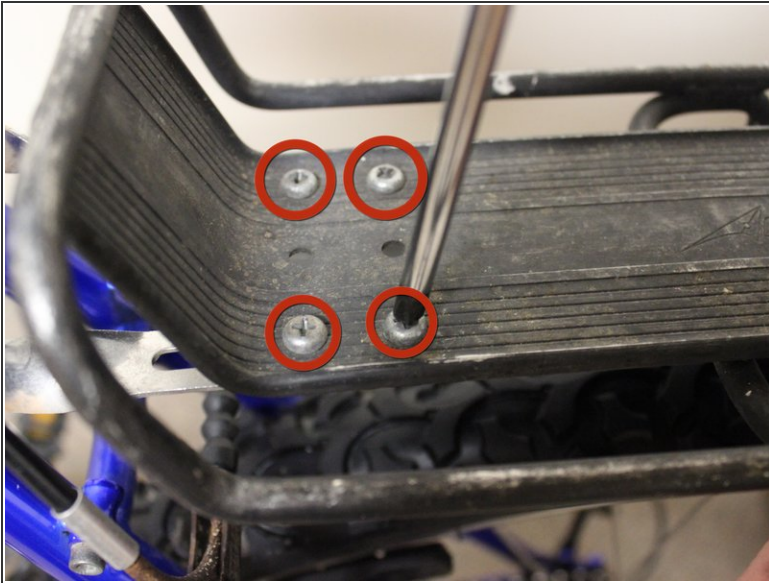
- Place a screw to attach the rear rack to the frame of the tire.
- Tighten the screw with a philips screwdriver by turning it in a clockwise direction.
- Repeat the steps above on the other side of the bike.

Step 3



- Place the metal holder to be even with the bar sticking out of the rear rack.
- Line up the holes. Place a bolt to attach them together.
- Use a philips screwdriver to tighten the bolts.
- Do this for both sides.

Step 4



- Make sure that the rear rack is even. If it is not, redo the previous step.
- Locate the screws on top of the rear rack. Tighten the screws using a philips screwdriver.
- Once the screws are tightened, you are done.

To detach the rear rack, follow the instructions of this guide in the reverse order.