



Raleigh M20 Chain Guard Replacement

In this guide, you will be instructed in how to disassemble the chain guard from the Raleigh M20 Mountain Bike.

Written By: Carl Lind



INTRODUCTION

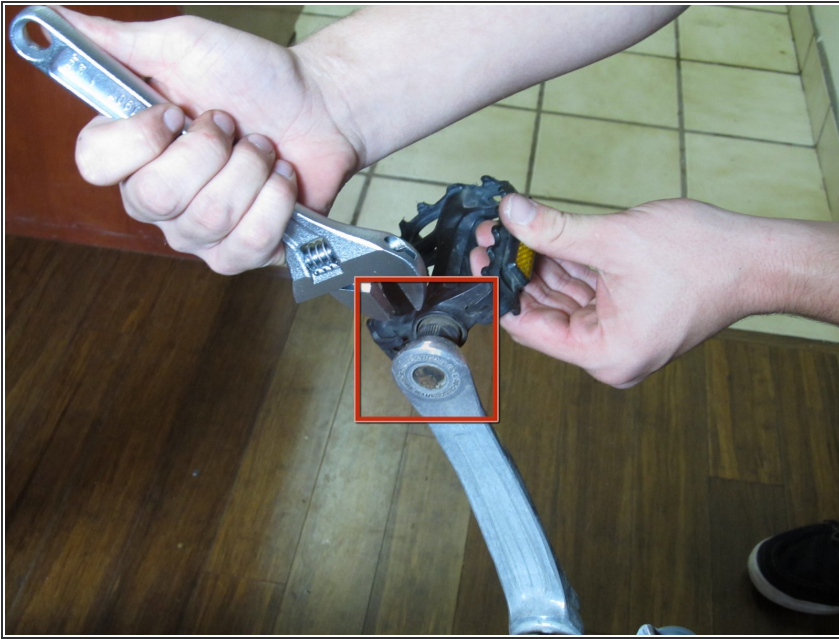
Before removing the crank arms, the pedals must be removed first. Follow this guide to the crank arms to replace the chain guard. To reassemble the crank arms and chain guard, follow steps in reverse order.



TOOLS:

- [Adjustable 8inch Crescent Wrench](#) (1)
 - [Crank Arm Puller](#) (1)
 - [Flathead Screwdriver](#) (1)
 - [Phillips #2 Screwdriver](#) (1)
 - [Socket Wrench](#) (1)
-

Step 1 — Raleigh M20 Pedal Removal



- First take an 8 in adjustable crescent wrench and fit it around the base of the pedal.

Step 2



- To unscrew the chain side pedal twist the the wrench counter clockwise.
- To unscrew the pedal that is on the side away from the chain, twist the wrench clockwise.

Step 3



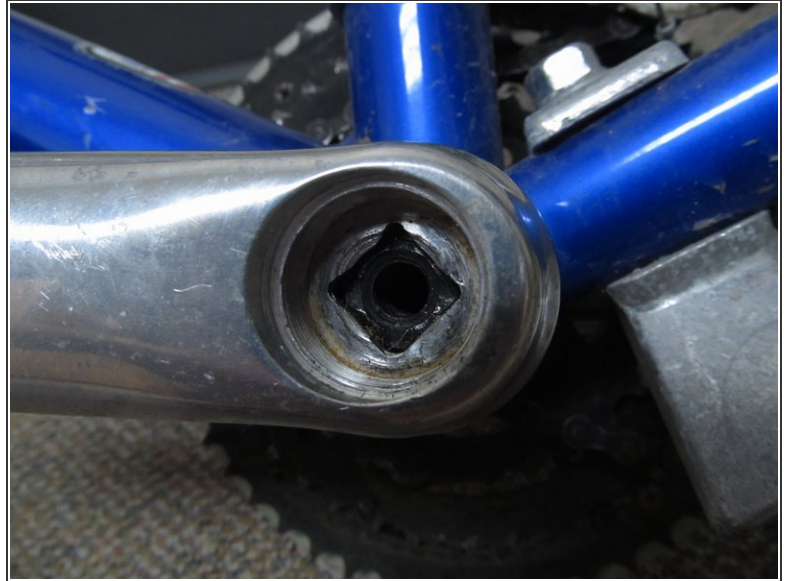
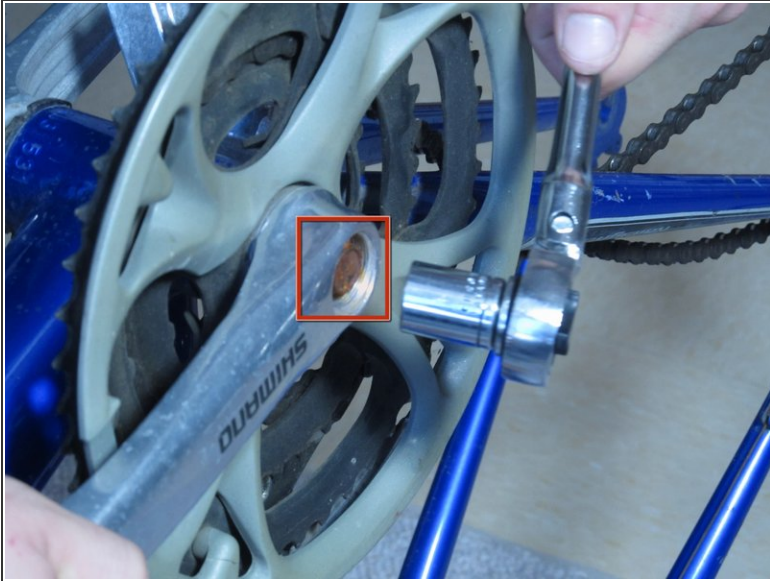
- Continue turning the wrench until the pedal detaches from the crank arm.

Step 4 — Chain Guard



- Use a flathead screwdriver to remove the cap over the screw.
- Do this for both sides.

Step 5



- To unscrew crank-arms, position socket wrench onto screw.
- Twist the socket wrench clockwise until the screw has been removed.

Step 6



- Insert the crank arm puller into the hole that the screw was occupying.
- Use a crescent wrench to tighten the crank arm puller by twisting clockwise until the puller cannot be tightened further.

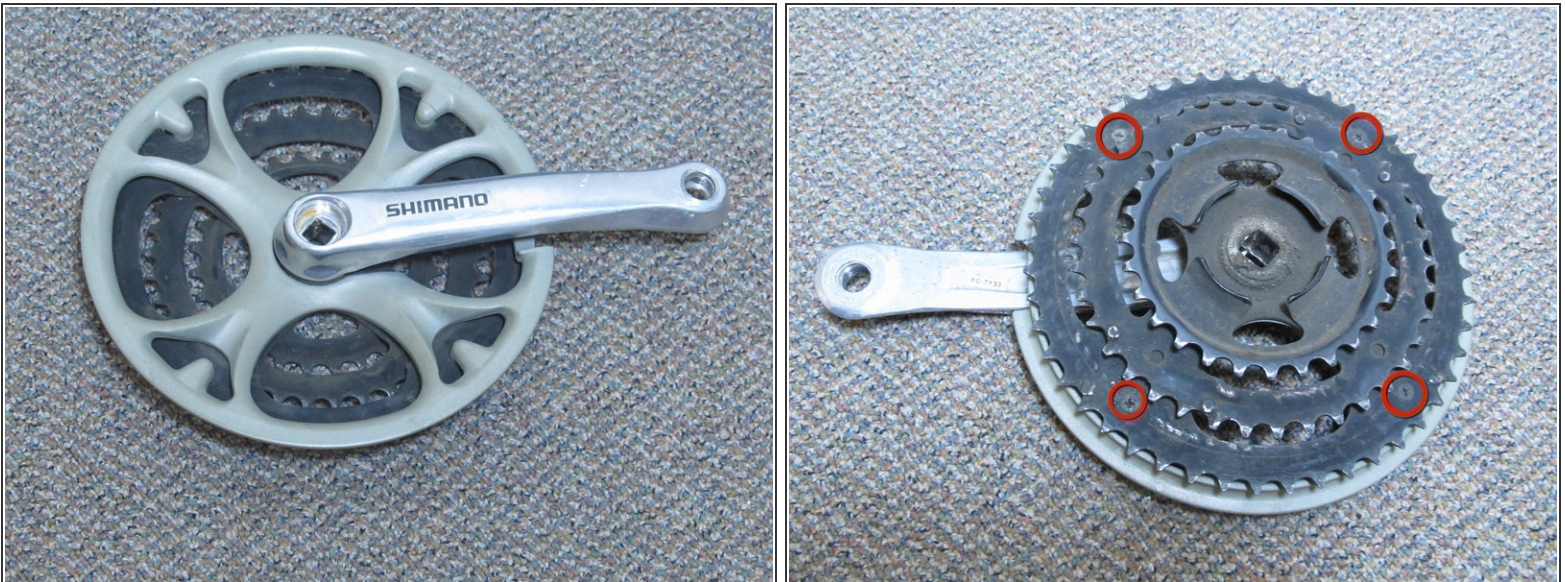
⚠ Do not over tighten the crank arm puller. Once it begins to become hard to tighten, stop.

Step 7



- Turn the crank arm puller clockwise until the crankarm pops off.
- ⓘ There will be some resistance when taking the crank arm off.
- Repeat steps 2-4 on the other side of the bike to remove the other crank arm.

Step 8



- Flip the crank arm, that has the chain-guard on it, over so that the chainring shows.
- Locate the four screws on the back of the chain ring.

Step 9



- Use a Phillips head screwdriver to remove the four screws on the back of the chain ring.

Step 10



- Flip chain guard back over so that the chain guard faces you.

Step 11



- Grasp the crankarm in one hand and the chain guard in the other.
- Gently, pull out and up on the chain guard until the guard pops off.

To reassemble your device, follow these instructions in reverse order.

If you are replacing the chain guard, use the new chain guard when reassembling the device.