



Raspberry Pi 3 SD Card Replacement

Replace the SD card for the Raspberry Pi 3.

Written By: ΛΛKΛRΞT



INTRODUCTION

In this guide I will show you how to change SD card in your Raspberry Pi 3.



TOOLS:

- [Pair of Hands](#) (1)



PARTS:

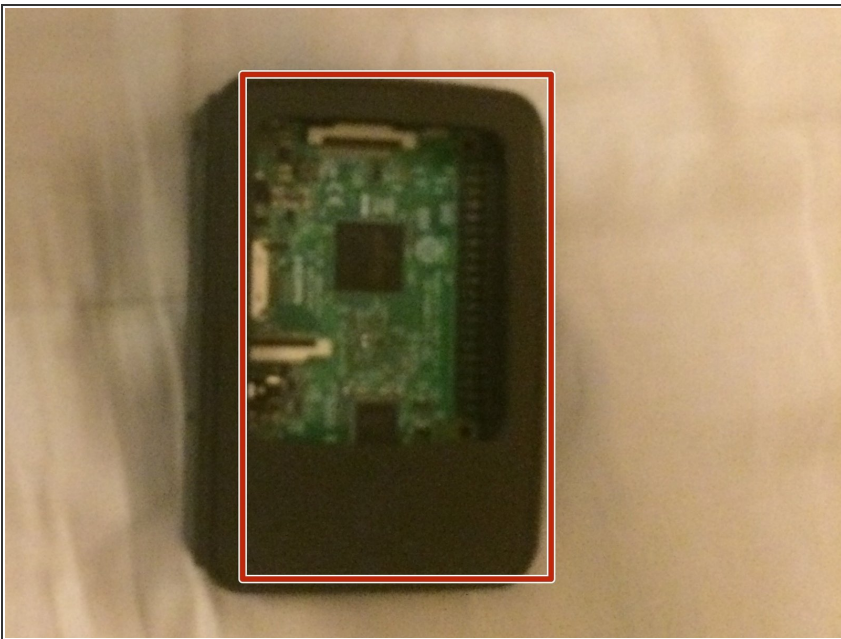
- [Raspberry Pi 3](#) (1)

Step 1 — Raspberry Pi 3 SD Card replacement.



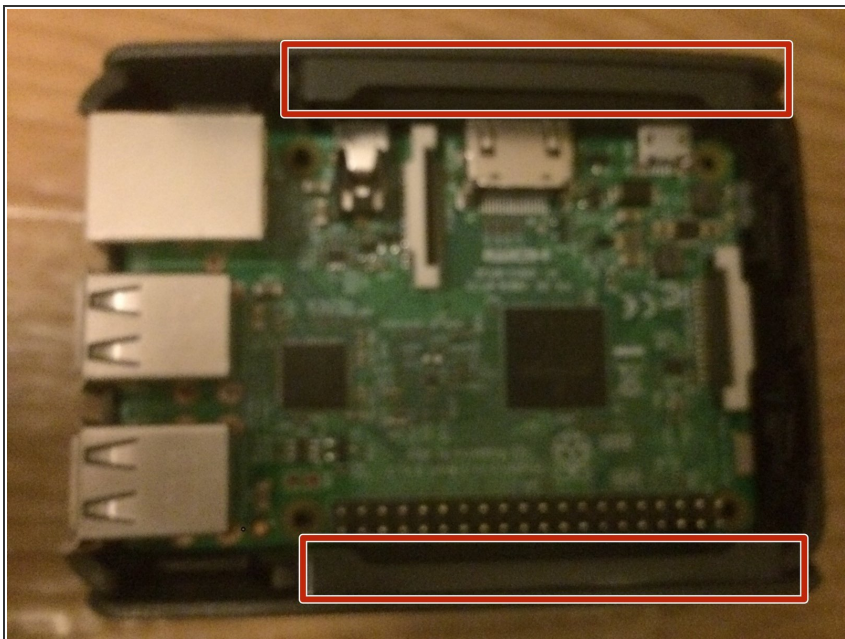
- ★ The Raspberry Pi 3 should look like this closed.

Step 2 — Top cover removal



- Open the top lid like I have done on the image.
- i The top is marked that you are gonna remove in the next step.

Step 3 — Cover for GPIO Hider and IO Shield removal



- Now remove the cover for the two covers.

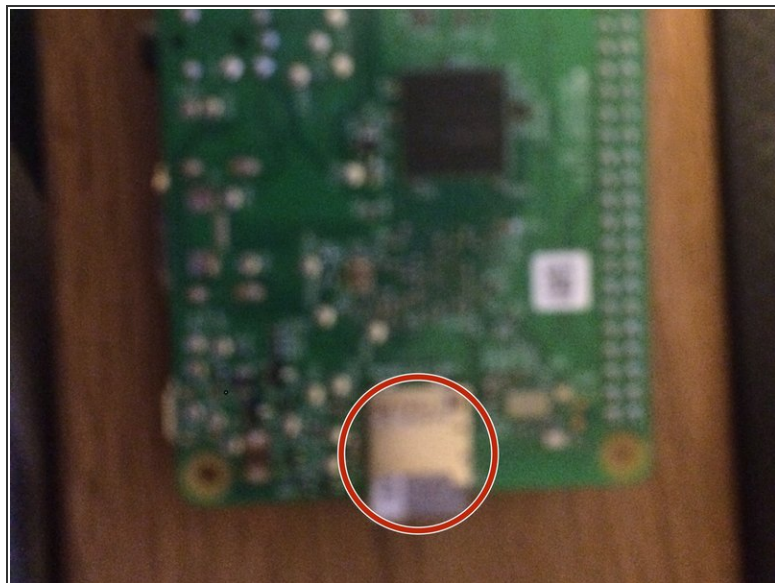
- ① It should look like the image.
- ① I have marked the covers for the next step.

Step 4 — IO Shield and GPIO Hider removal



- Remove the two sides.
- ① It should look like the image.

Step 5 — Removal.



- Now we should successfully have removed the case.
- ⓘ Notice that the side shown on the first image is the one that we are interested in.
- ⓘ When we have flipped the Pi 3 over we can remove the SD card.

To reassemble your device, follow these instructions in reverse order.