



Razer BlackWidow Chroma Lights Replacement

This guide will go through the steps necessary to replace a light in the Razer BlackWidow Chroma keyboard.

Written By: Brooke Stevenson



INTRODUCTION

In this replacement guide we will go over how to disassemble the Razer BlackWidow Chroma. After disassembling the keyboard there will be a link on how to solder and replace the lights.



TOOLS:

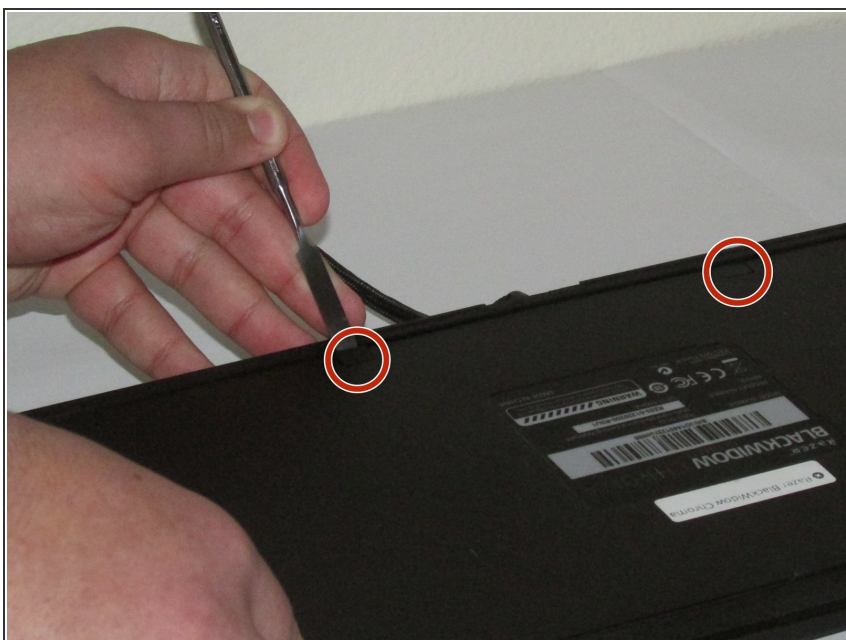
- [Metal Spudger](#) (1)
 - [Phillips #0 Screwdriver](#) (1)
 - [iFixit Opening Tools](#) (1)
-

Step 1 — Lights



- Gently pull off the four rubber tabs located on the corners of the keyboard with your fingers.

Step 2



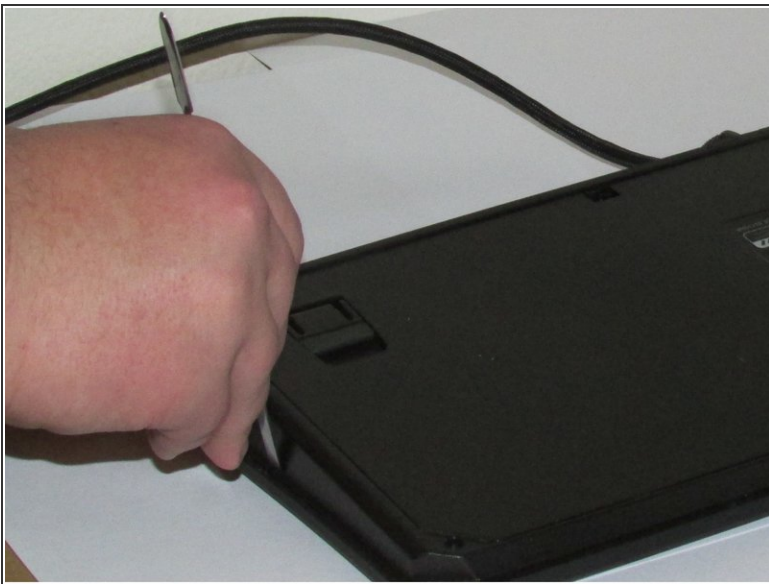
- Using a metal spudger, gently remove the plastic tabs that are covering the two screws.

Step 3



- There are six 10mm screws indicated by the red markups . Remove the screws using the Phillips #0 Screwdriver.

Step 4



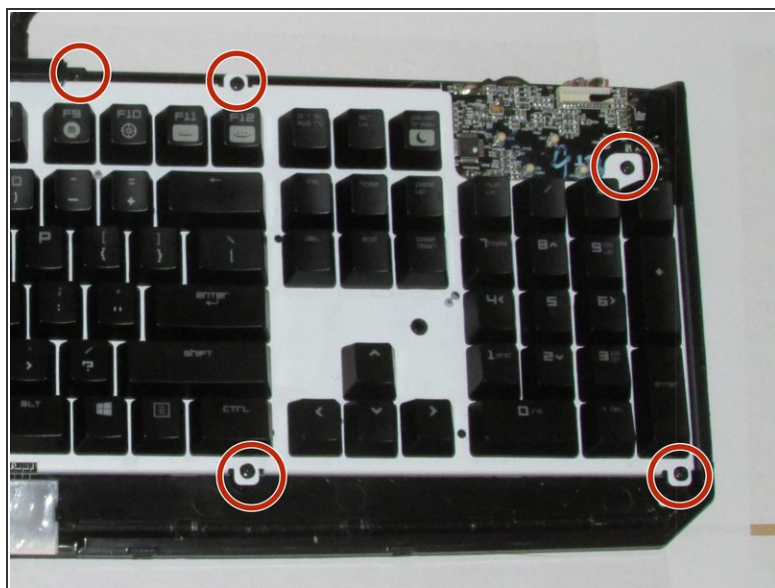
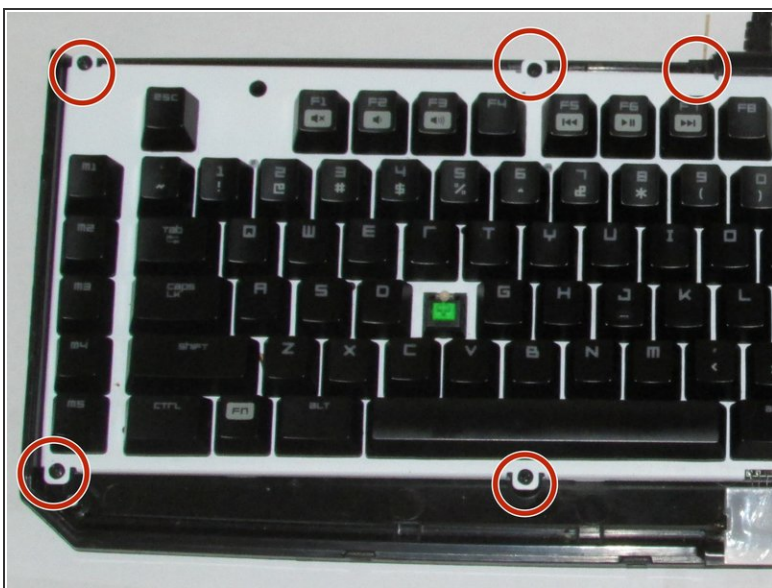
- Using a metal spudger, begin prying off the faceplate of the keyboard. There are small tabs along the edge of the keyboard and the faceplate that must be released. There are four tabs along the front of the keyboard and two along each side.

Step 5



- Using a plastic opening tool, lift the plastic covering away from the LED light.

Step 6



- Using the Phillips #0 Screwdriver, remove the ten 10mm screws that are indicated by the red markers.

Step 7



- Click the link below to watch a video that will guide you through the rest of the steps on how to replace LEDs in the keyboard. This step does require soldering . [How to Replace Back-light LEDs](#)

To reassemble your device, follow these instructions in reverse order.