



Razer Blade 15 Keyboard Replacement

Damaged keys or top case

Written By: Ved Pitre

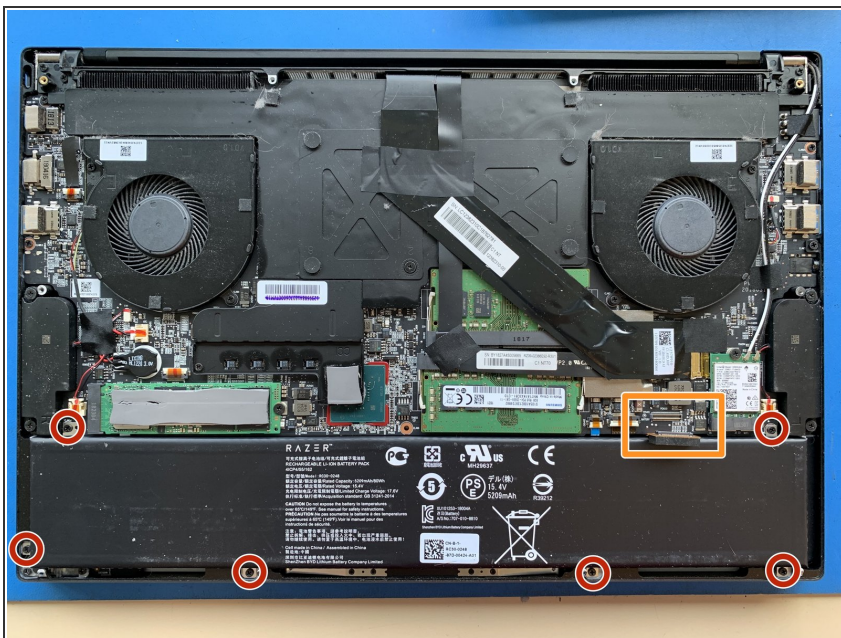


Step 1 — Remove the Back Cover



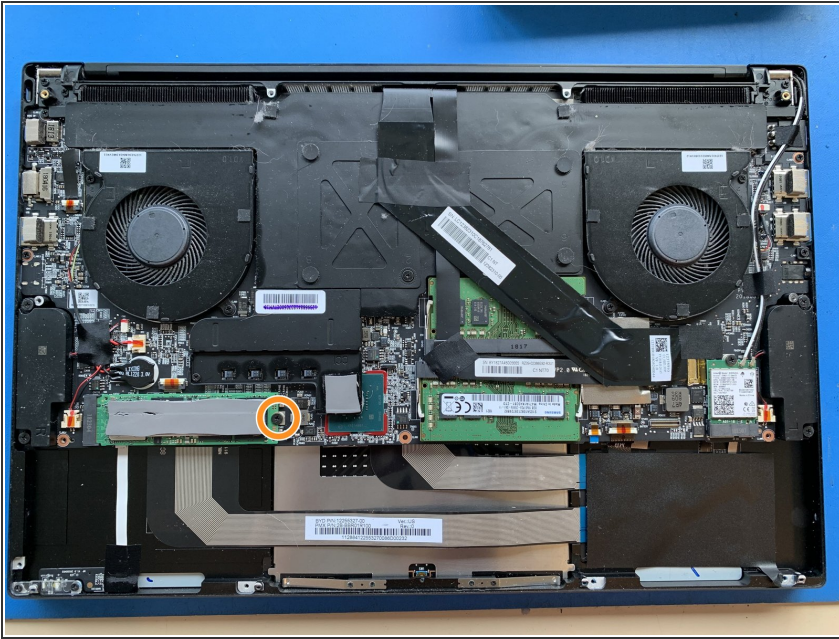
- Flip over to the back side of the laptop
- Remove the 10 screws at the bottom of the Razer using a T5 screwdriver head

Step 2 — Remove the Laptop Battery



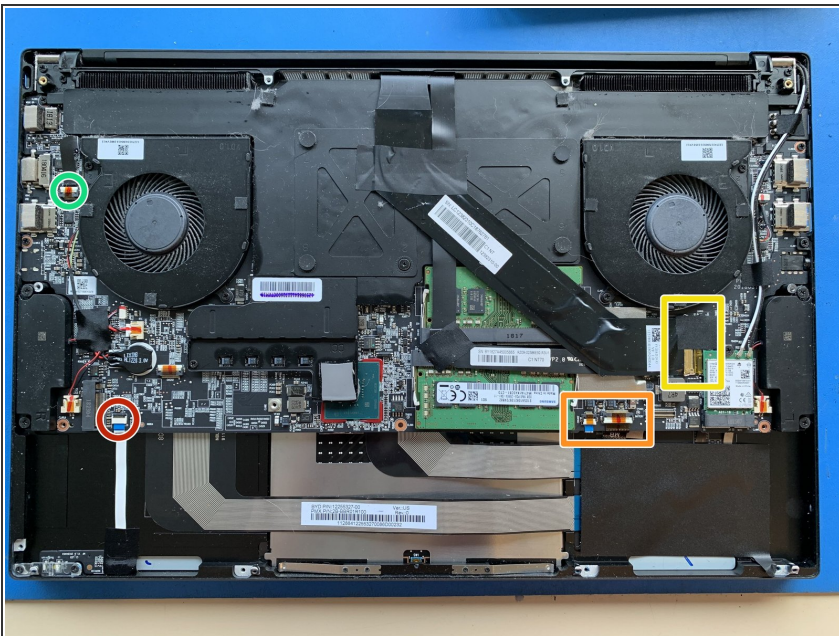
- Unplug the battery and wear the anti-static band before proceeding
- Unscrew the six Philips screws around the battery and lift the battery

Step 3 — Remove the SSD



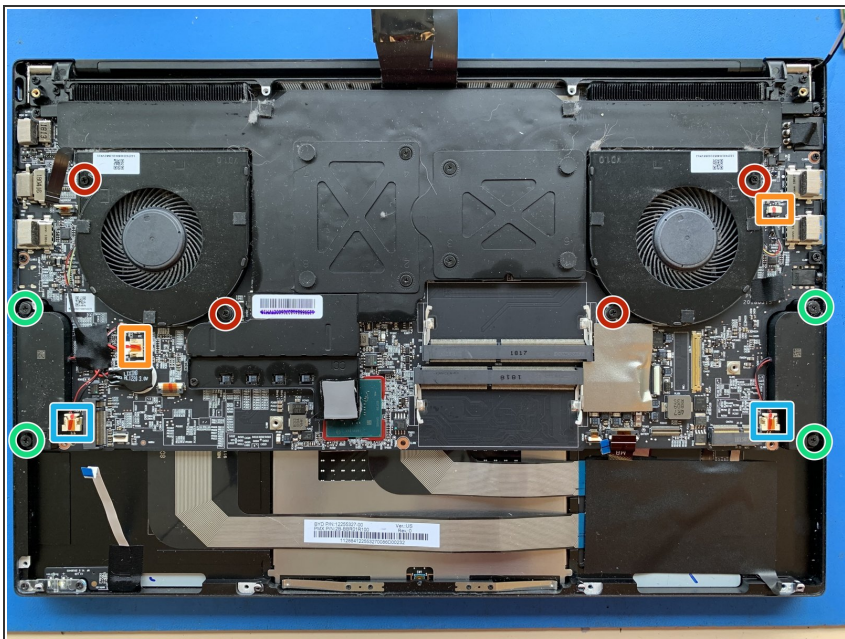
- Find the SSD and unscrew the single screw
- Once it is unscrewed, the SSD will pop up on one side
- Carefully remove the SSD and place it to the side

Step 4 — Disconnect the MOBO Cables



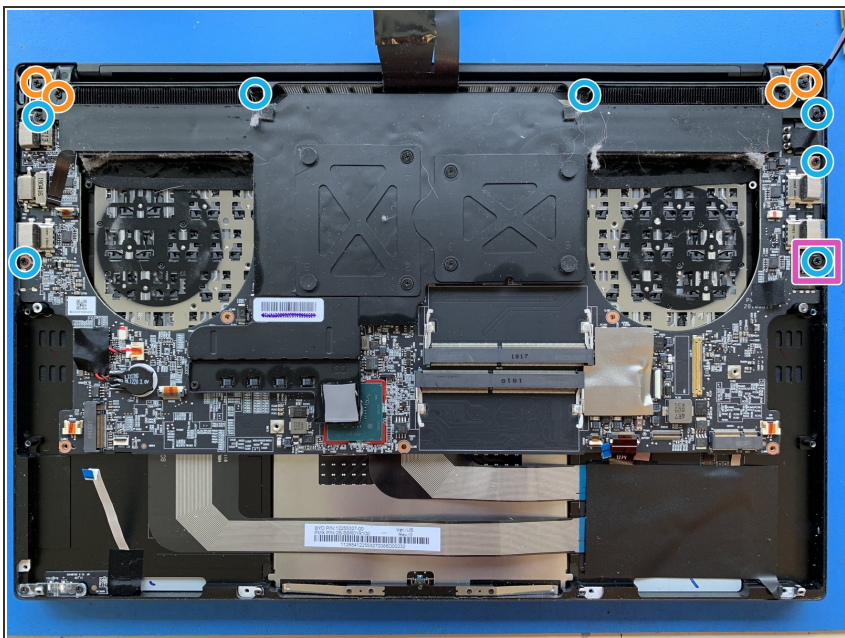
- Locate the two display cables to the left of the left speaker and disconnect both. (one is underneath the other)
- Locate and disconnect the four cables
 - Disconnect one cable that is underneath the SSD
 - Disconnect another cable that is next to the right fan
 - Disconnect the final two cables that are to the left of the battery connector

Step 5 — Remove the Fans and Speakers



- Unscrew the four screws on the fans (two screws on each)
- Make sure to unplug the connector on each of the fans. Lift and remove the fans.
- Unscrew the four screws on the speakers (two screws on each)
- Make sure to unplug the connector on each of the speakers and place them to the side

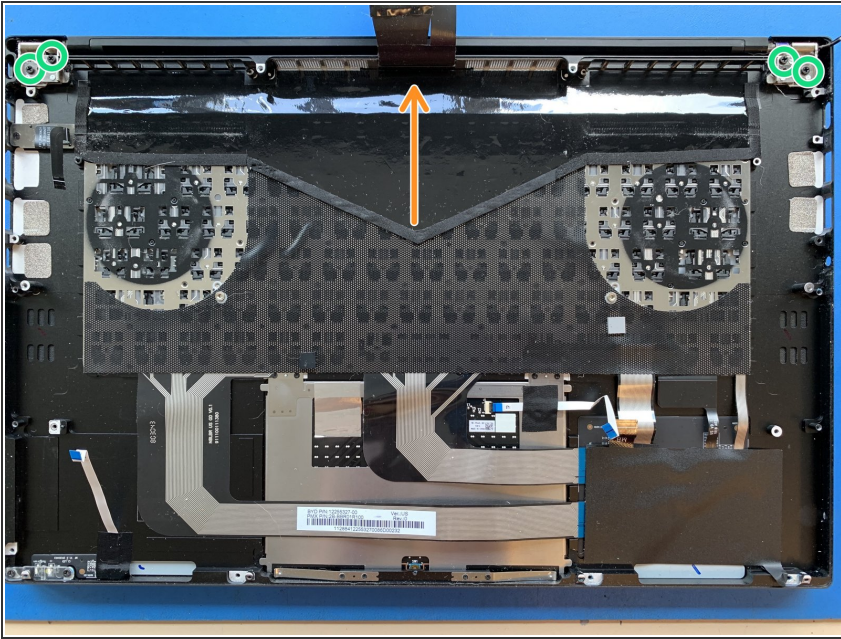
Step 6 — Remove the Motherboard and Hinges



- Remove the two screws on each hinge and pick up the black pieces
- Locate the seven screws holding down the motherboard and remove them
- Remove the plastic headphone jack cover
- Lift up the MOBO and place it to the side

⚠ Be careful when handling the motherboard and make sure you're wearing the anti-static band.

Step 7 — Replacing the Keyboard



- Unscrew the LCD
- Slide the LCD connectors through the opening at the top when removing the LCD
- Slide the LCD connectors of the new LCD through the opening at the top
- Screw the new LCD back into the bottom case

Step 8 — Put Everything Back Together



- Make sure all of the cables are in sight once the motherboard has been placed down
- Screw in both the motherboard screws and the hinges
- Reconnect the motherboard connectors
- Place and screw in the fans and speakers
- Make sure the SSD has been reconnected and screwed in
- Screw the battery back in and reconnect the battery

Make sure all of the keys on the keyboard are working properly. Once done, call the user to pick up their laptop.