



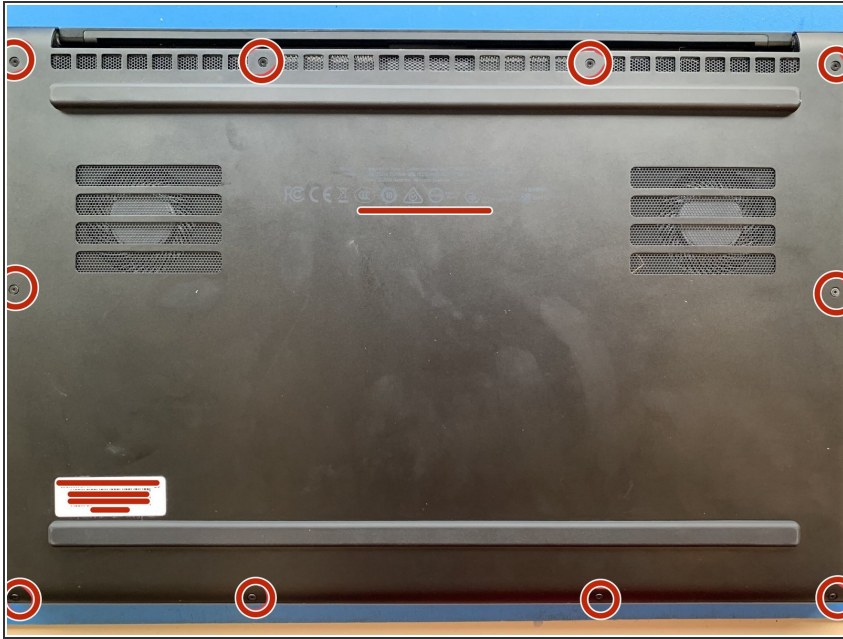
# Razer Blade 15 LCD Replacement

Cracked and Damaged LCD Replacements

Written By: Ved Pitre

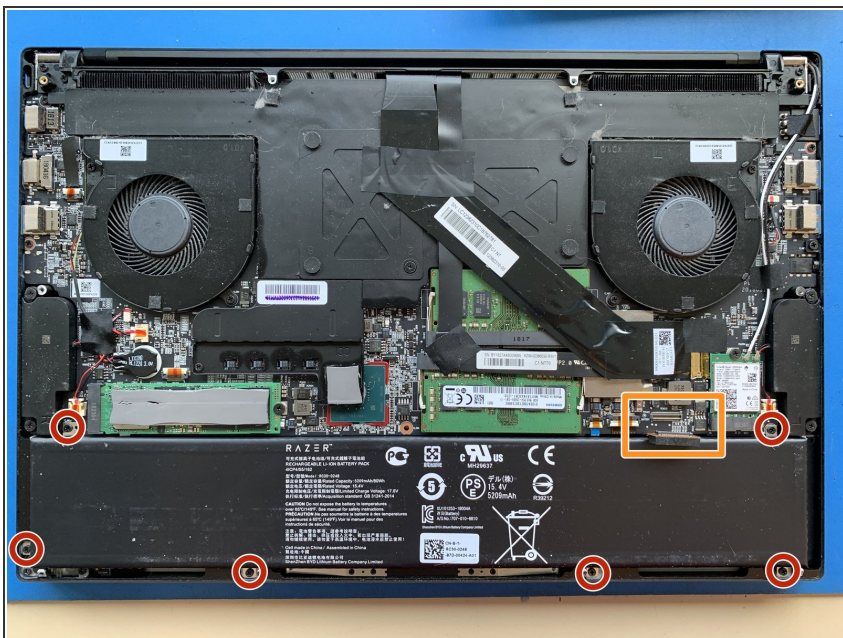


## Step 1 — Remove the Back Cover



- Flip over to the back side of the laptop
- Remove the 10 screws at the bottom of the Razer using a T5 screwdriver head

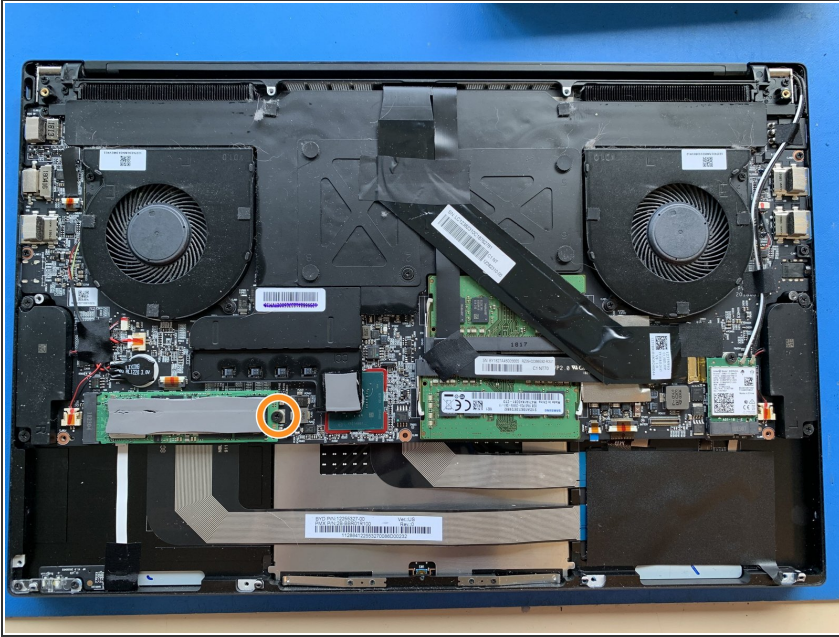
## Step 2 — Remove the Laptop Battery



- Unplug the battery and wear the anti-static band before proceeding
- Unscrew the six Philips screws around the battery and lift the battery

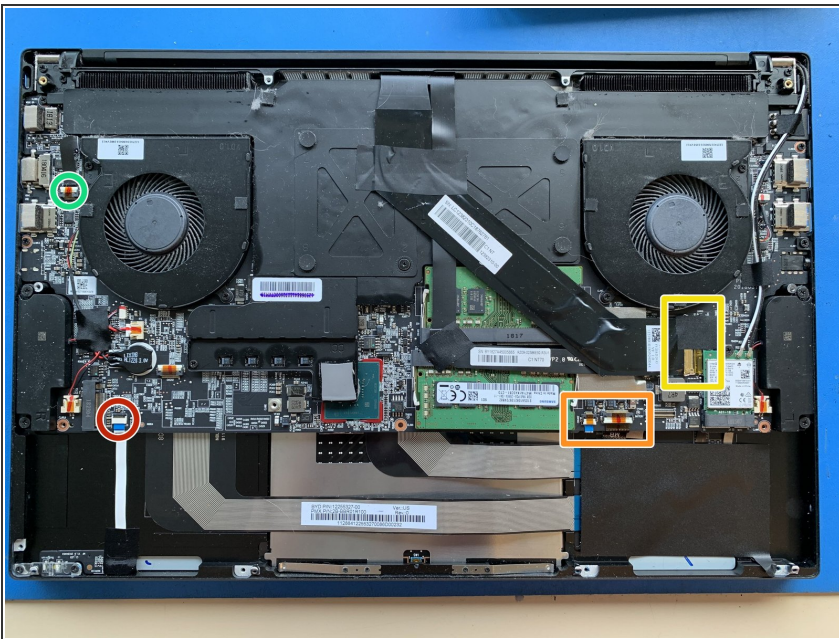


### Step 3 — Remove the SSD



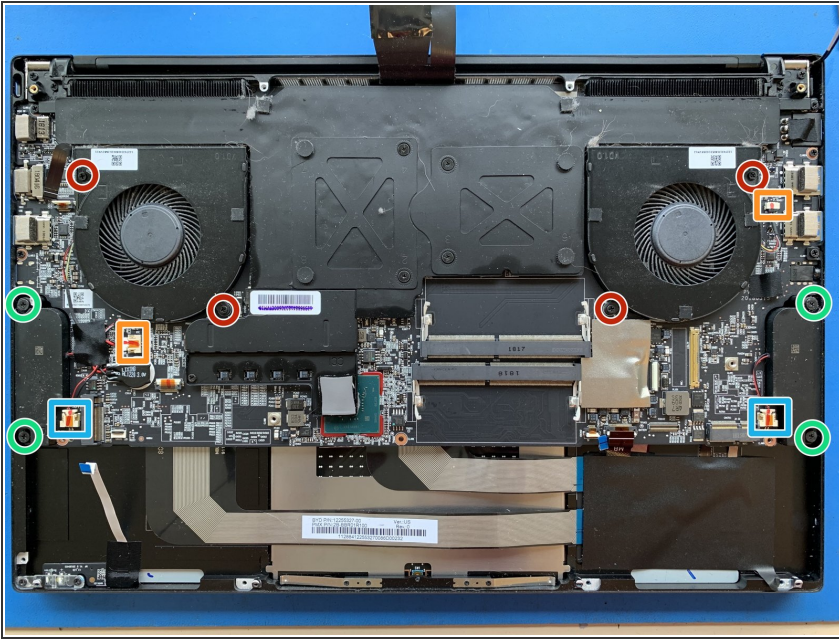
- Find the SSD and unscrew the single screw
- Once it is unscrewed, the SSD will pop up on one side
- Carefully remove the SSD and place it to the side

### Step 4 — Disconnect the MOBO Cables



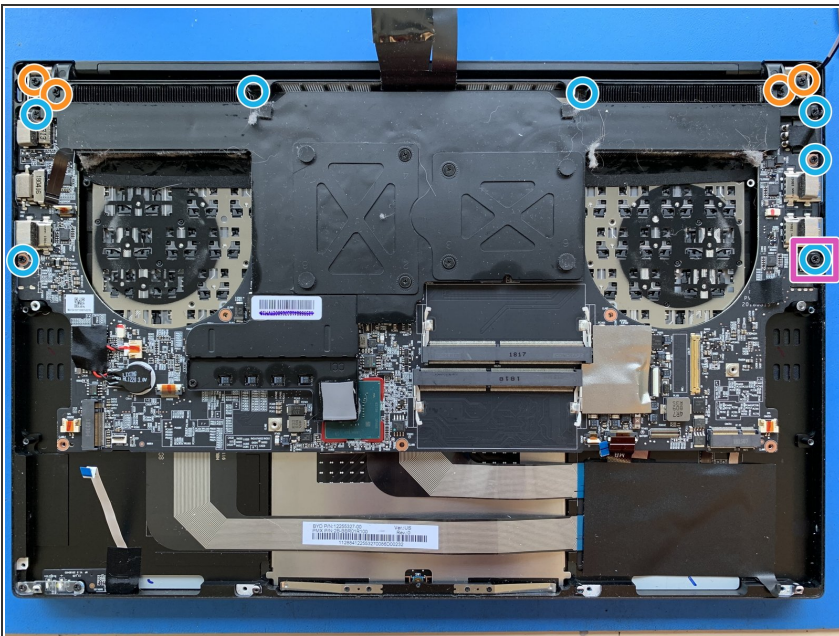
- Locate the two display cables to the left of the left speaker and disconnect both. (one is underneath the other)
- Locate and disconnect the four cables
  - Disconnect one cable that is underneath the SSD
  - Disconnect another cable that is next to the right fan
  - Disconnect the final two cables that are to the left of the battery connector

## Step 5 — Remove the Fans and Speakers



- Unscrew the four screws on the fans (two screws on each)
- Make sure to unplug the connector on each of the fans. Lift and remove the fans
- Unscrew the four screws on the speakers (two screws on each)
- Make sure to unplug the connector on each of the speakers and place them to the side

## Step 6 — Remove the Motherboard and Hinges

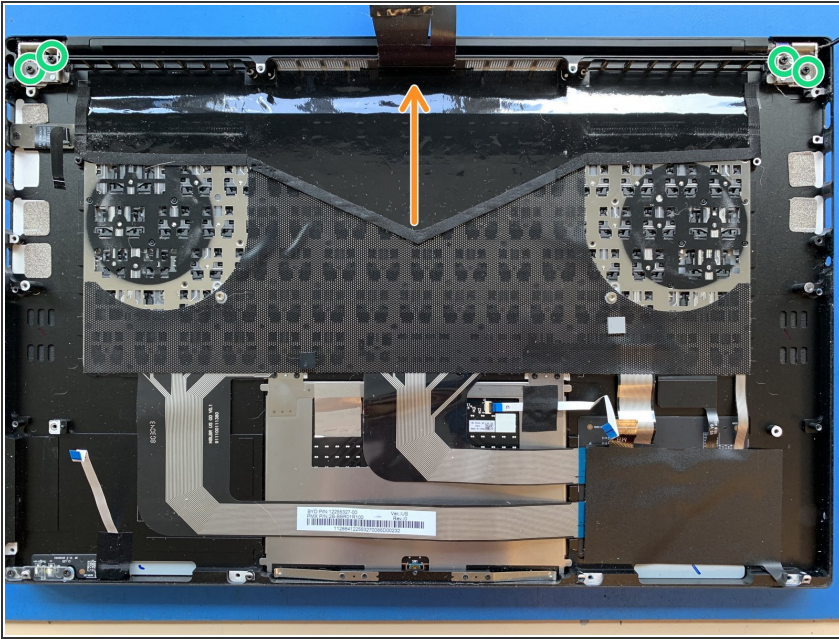


- Remove the two screws on each hinge and pick up the black pieces
- Locate the seven screws holding down the motherboard and remove them
- Remove the plastic headphone jack cover
- Lift up the MOBO and place it to the side

⚠ Be careful when handling the motherboard and make sure you're wearing the anti-static band



## Step 7 — Replacing the LCD



- Unscrew the LCD
- Slide the LCD connectors through the opening at the top when removing the LCD
- Slide the LCD connectors of the new LCD through the opening at the top
- Screw the new LCD back into the bottom case

## Step 8 — Put Everything Back Together



- Make sure all of the cables are in sight once the motherboard has been placed down
- Screw in both the motherboard screws and the hinges
- Reconnect the motherboard connectors
- Place and screw in the fans and speakers
- Make sure the SSD has been reconnected and screwed in
- Screw the battery back in and reconnect the battery

This document was generated on 2020-04-05 08:27:26 PM (MST).

Make sure the new LCD is working properly. Once done, call the user to pick up their laptop.