



Razer Blade 15 Motherboard Replacement

Replacing the motherboard if it stops working or the I/O outputs stop working

Written By: Ved Pitre

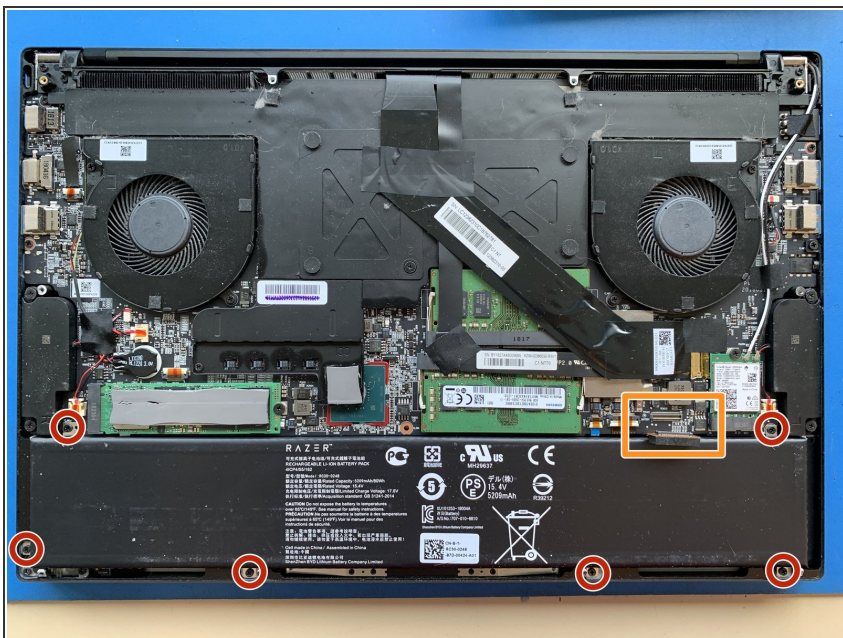


Step 1 — Remove the Back Cover



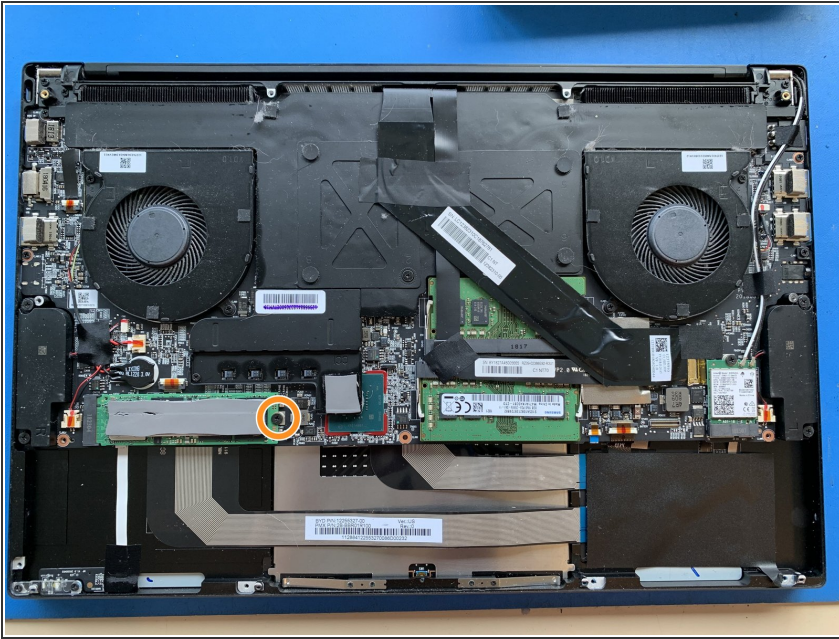
- Flip over to the back side of the laptop
- Remove the 10 screws at the bottom of the Razer using a T5 screwdriver head

Step 2 — Remove the Laptop Battery



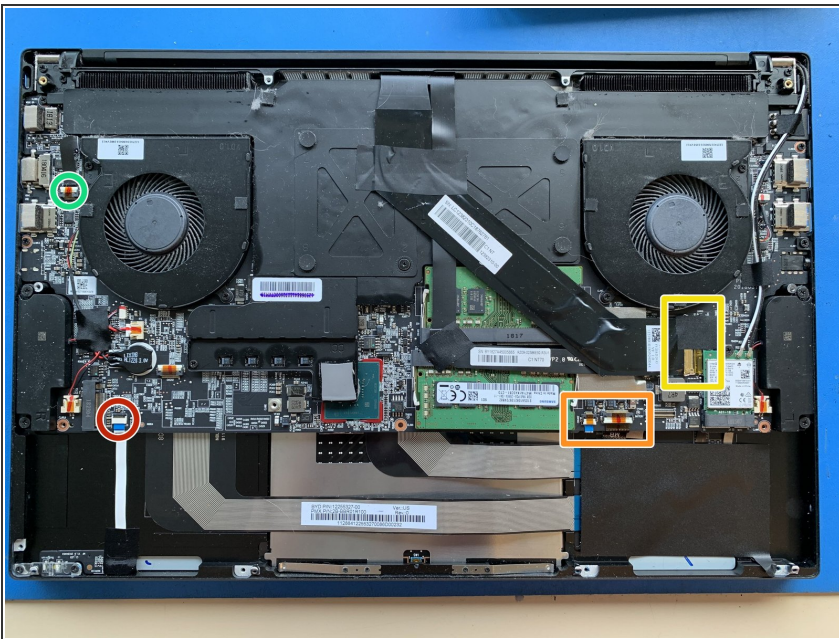
- Unplug the battery and wear the anti-static band before proceeding
- Unscrew the six Philips screws around the battery and lift the battery

Step 3 — Remove the SSD



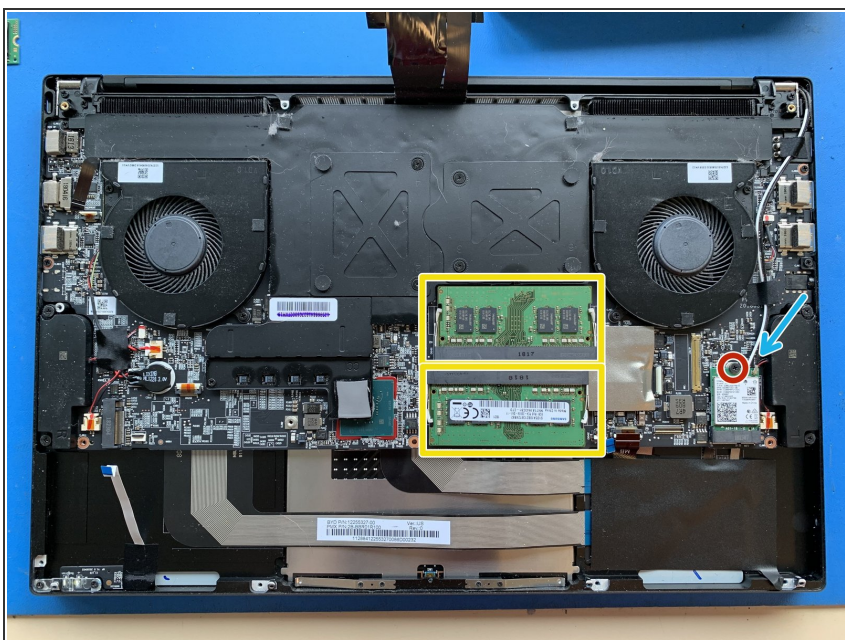
- Find the SSD and unscrew the single screw
- Once it is unscrewed, the SSD will pop up on one side
- Carefully remove the SSD and place it to the side

Step 4 — Disconnect the MOBO Cables



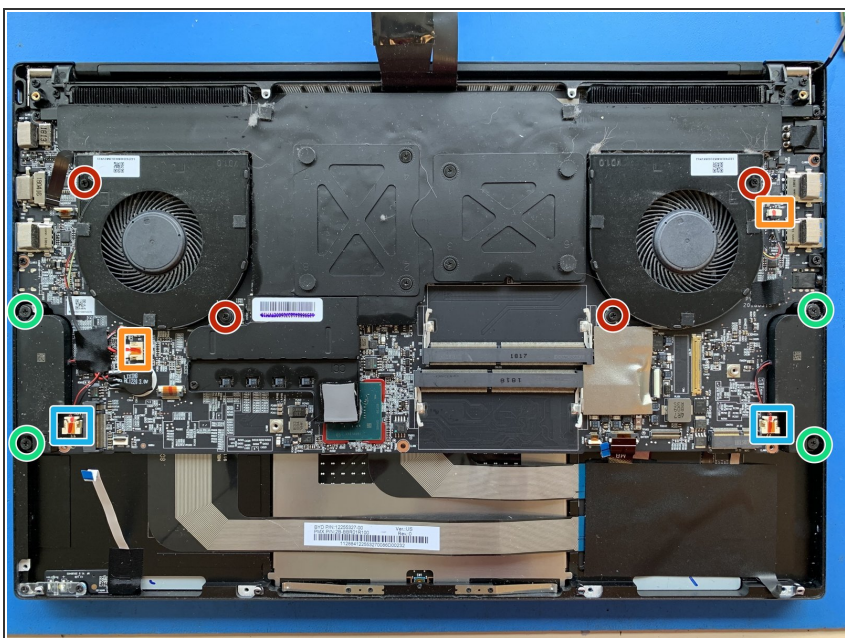
- Locate the two display cables to the left of the left speaker and disconnect both. (one is underneath the other)
- Locate and disconnect the four cables
 - Disconnect one cable that is underneath the SSD
 - Disconnect another cable that is next to the right fan
 - Disconnect the final two cables that are to the left of the battery connector

Step 5 — Remove the RAM and Wi-Fi Card



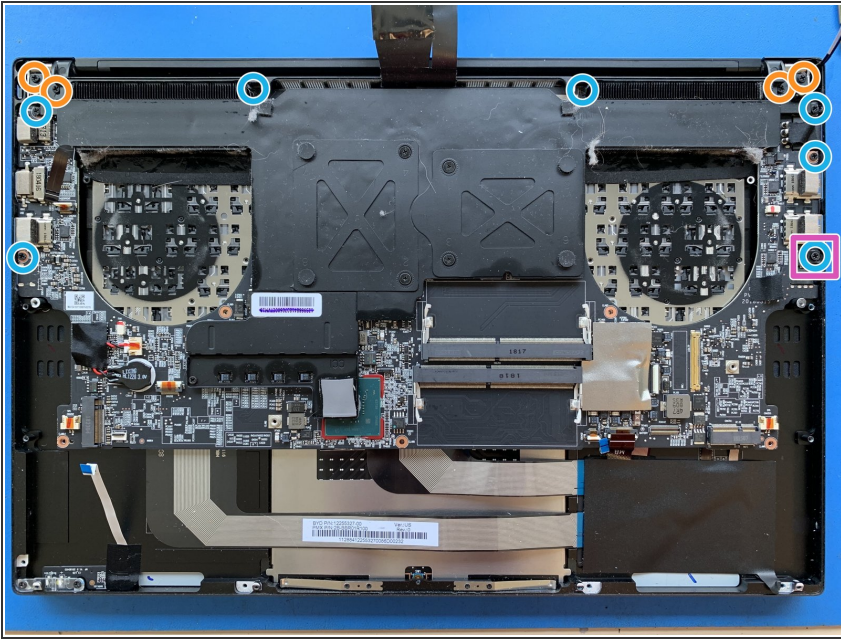
- Move the two metal pieces to each side and remove the two RAM
- Disconnect the two thin cables connected to the Wi-Fi card
- Remove the screw and carefully pull out the Wi-Fi card

Step 6 — Remove the Fans and Speakers



- Unscrew the four screws on the fans (two screws on each)
- Make sure to unplug the connector on each of the fans. Lift and remove the fans.
- Unscrew the four screws on the speakers (two screws on each)
- Make sure to unplug the connector on each of the speakers and place them to the side

Step 7 — Remove the Motherboard and Hinges



- Remove the two screws on each hinge and pick up the black pieces
- Locate the seven screws holding down the motherboard and remove them
- Remove the plastic headphone jack cover
- Lift up the MOBO and place it to the side

⚠ Be careful when handling the motherboard and make sure you're wearing the anti-static band.

Step 8 — Put Everything Back Together



- Make sure all of the cables are in sight once the motherboard has been placed down
- Screw in both the motherboard screws and the hinges
- Reconnect the motherboard connectors
- Make sure you reconnect the Wi-Fi card and RAM
- Place and screw in the fans and speakers
- Make sure the SSD has been reconnected and screwed in
- Screw the battery back in and reconnect the battery
- Update DMI Info

Once the repair had been done. Call the user and let them know their laptop is ready for pick-up