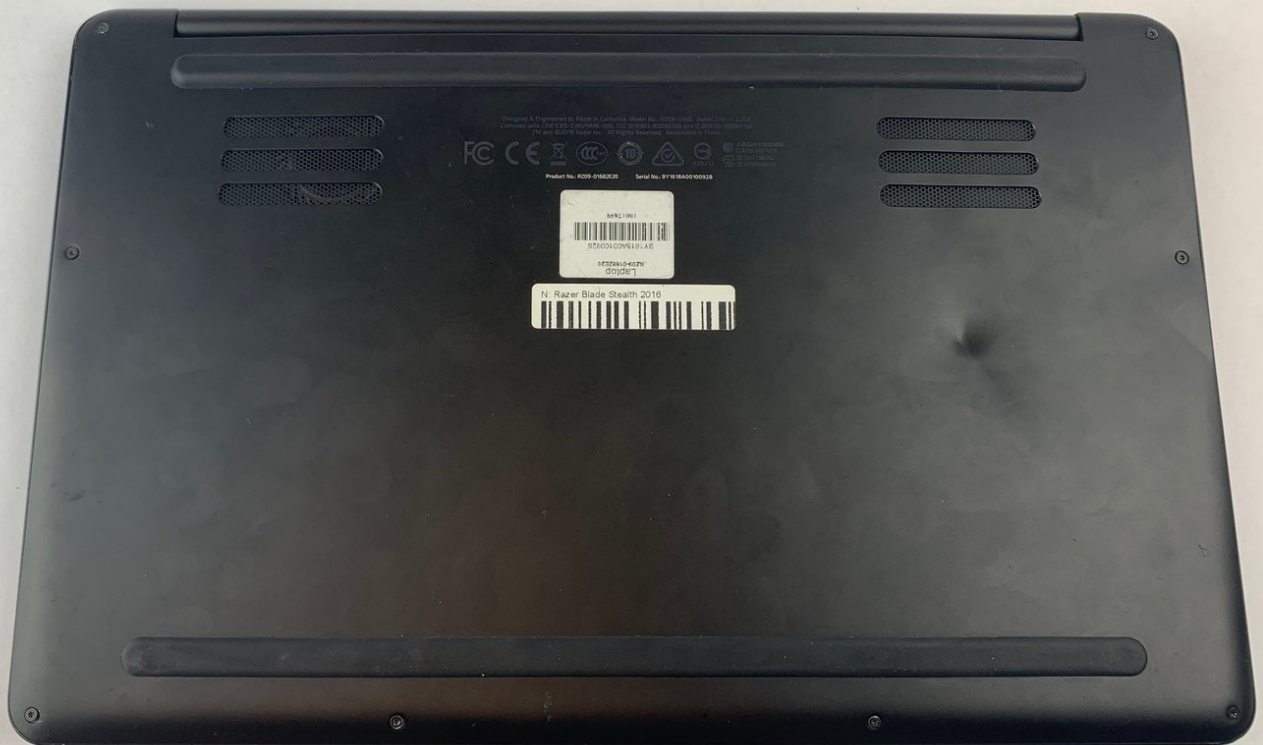




Razer Blade Stealth 2016 Hard Drive Replacement

This guide is created to give instructions on how to replace the hard drive of the Razer Blade Stealth 2016.

Written By: Lindsay Grant



INTRODUCTION

This guide will demonstrate how to replace the hard drive of the Razer Blade Stealth 2016.



TOOLS:

- [Phillips #00 Screwdriver](#) (1)
- [T4 Torx Screwdriver](#) (1)



PARTS:

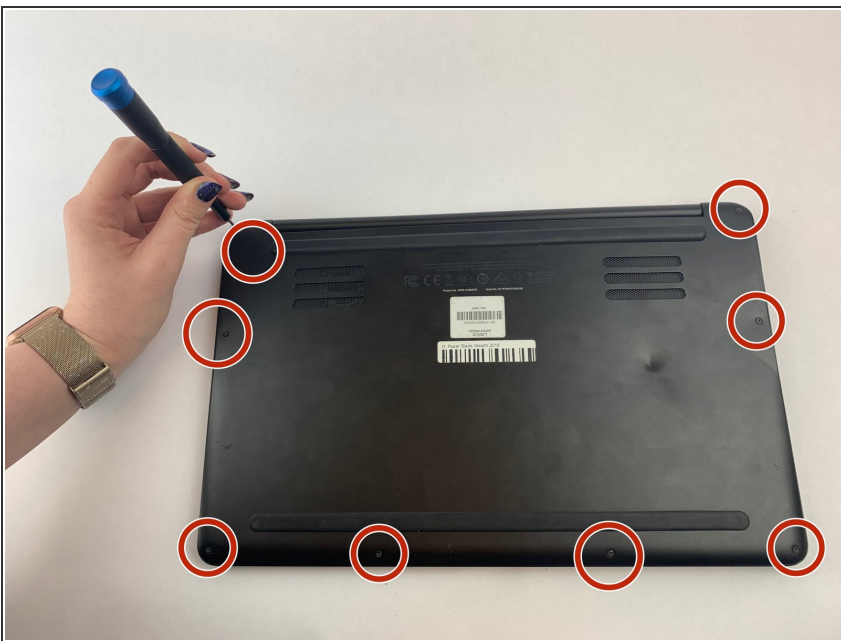
- [Razer Blade Stealth 2016 Hard Drive](#) (1)

Step 1 — Hard Drive



- Turn the laptop over so it's upside down.

Step 2



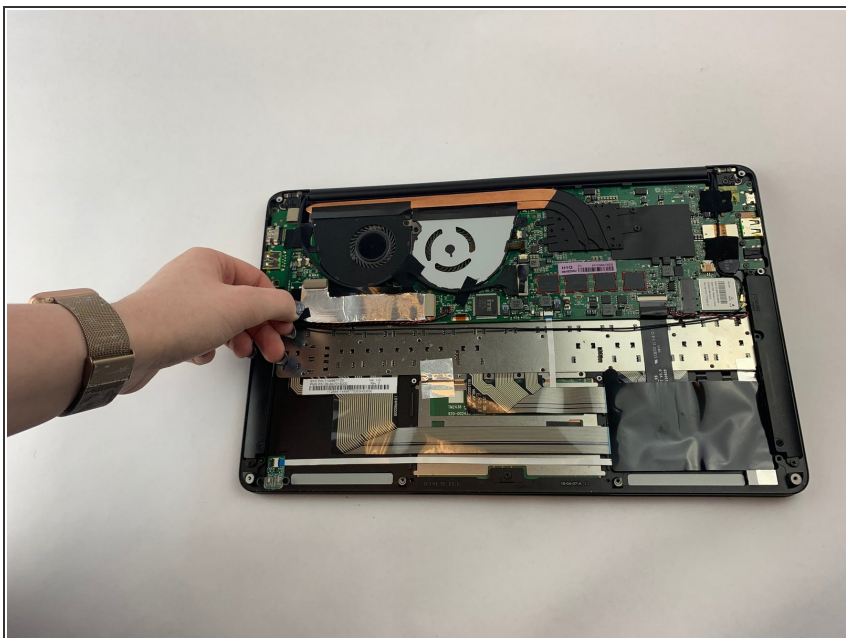
- Using a Torx T4 screwdriver, remove the eight 3 mm screws that secure the bottom cover.

Step 3



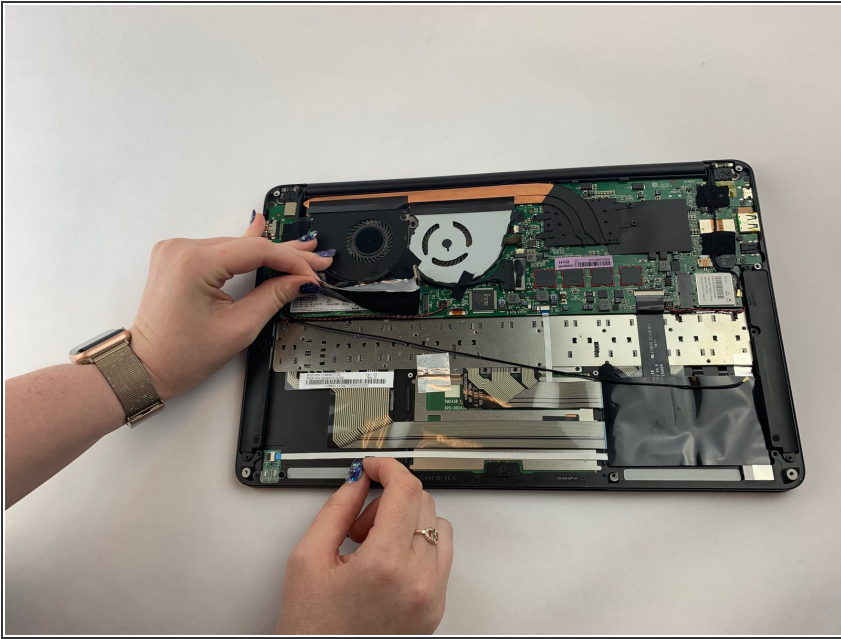
- Carefully lift the bottom cover off of the laptop.

Step 4



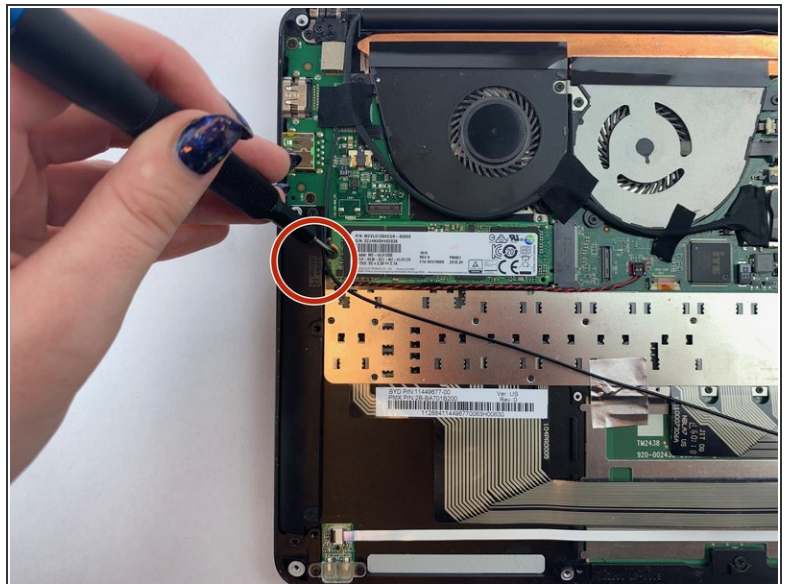
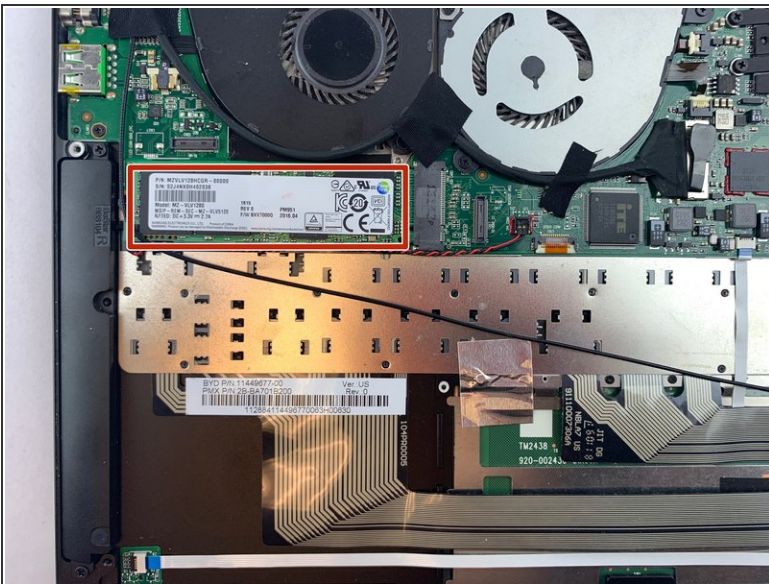
- Carefully remove the tabs from their slots of the silver piece of foil.

Step 5



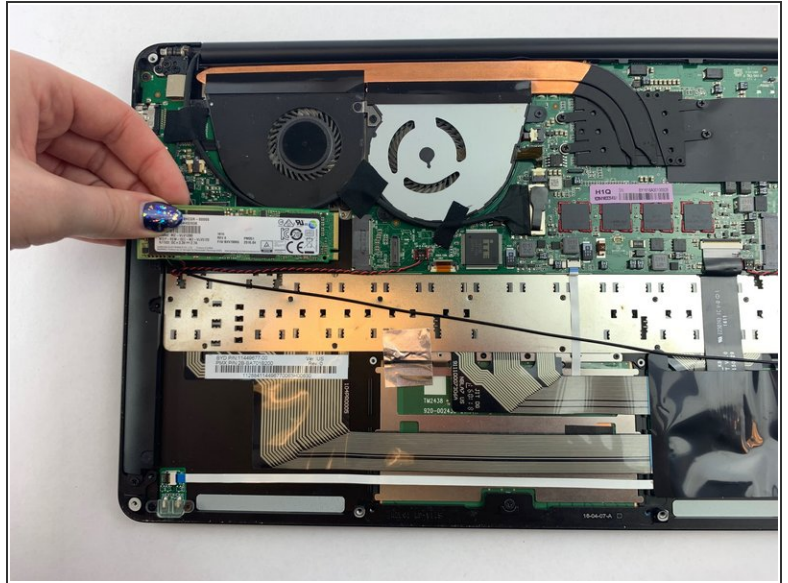
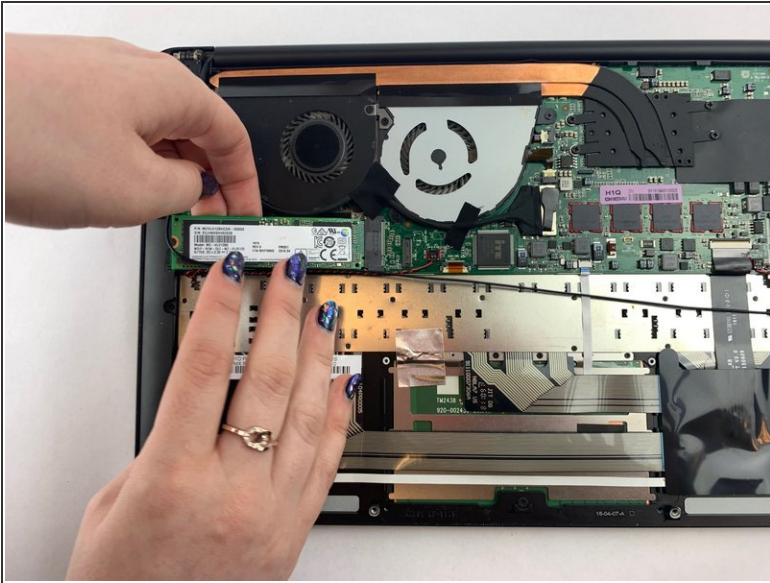
- Slowly peel back the silver piece and black tape beneath it to reveal the hard drive.

Step 6



- Using a Phillips #00 screwdriver, remove the 2.5 mm screw on the left side of the hard drive.

Step 7



- Carefully slide the hard drive out from its slot.

To reassemble your device, follow these instructions in reverse order.