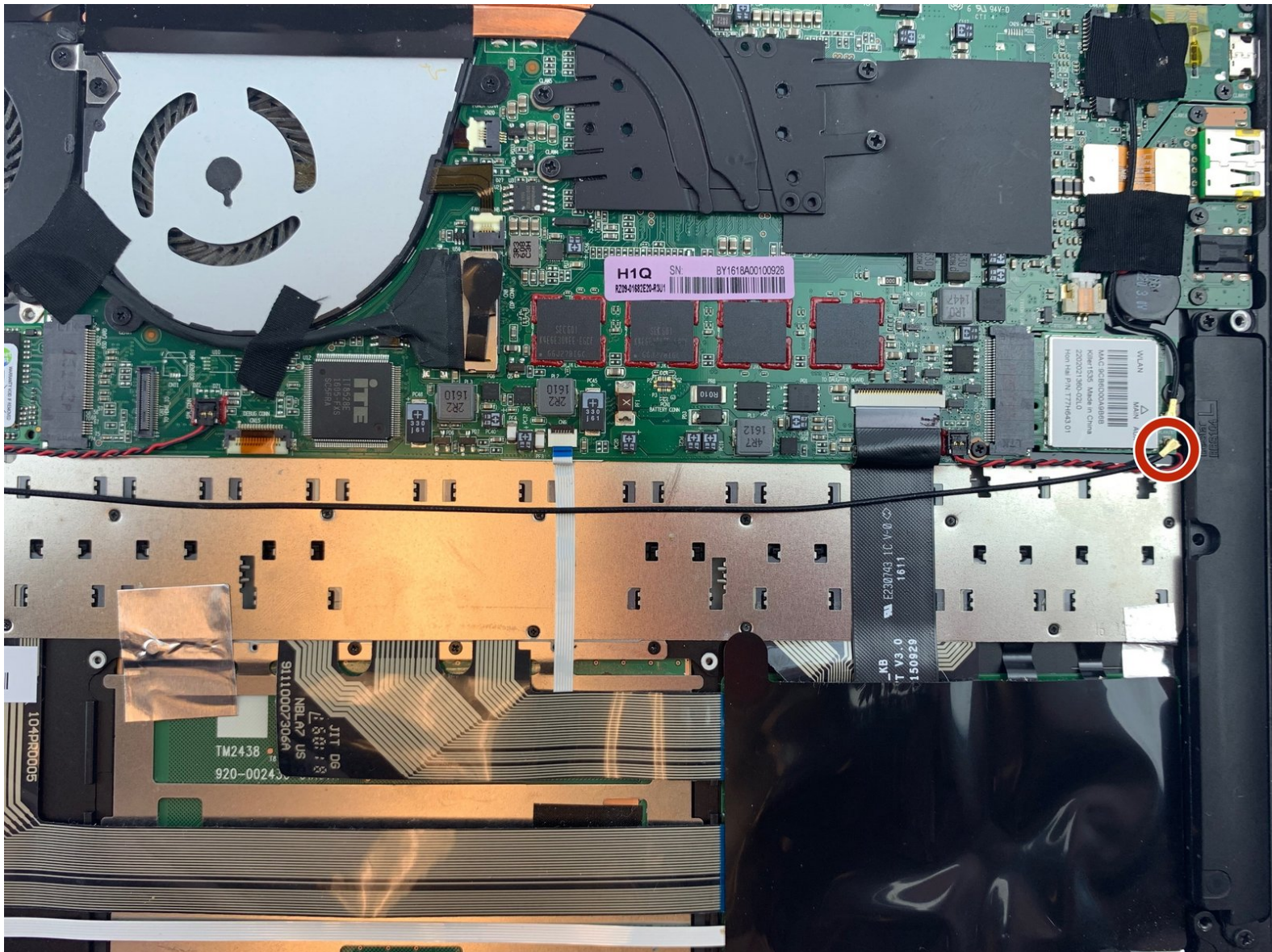




Razer Blade Stealth 2016 Killer 1535 Wireless Card Replacement

This guide shows how to remove and replace the Killer 1535 Wireless Card in the Razer Blade Stealth 2016 laptop

Written By: Kaitlyn Murray



This document was generated on 2020-04-14 12:20:47 PM (MST).

INTRODUCTION

If your Razer Blade Stealth 2016 is having difficulty connecting and staying connected to the internet, use this guide to remove and replace your wireless card.



TOOLS:

- [T4 Torx Screwdriver](#) (1)
 - [Phillips #00 Screwdriver](#) (1)
-

Step 1 — Battery



- Use a Torx 4 screwdriver to remove the eight 3.04 mm screws on the back case and remove the rear cover by prying up lightly starting in one of the corners.

Step 2



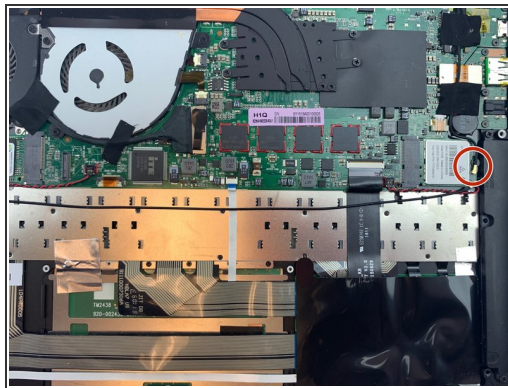
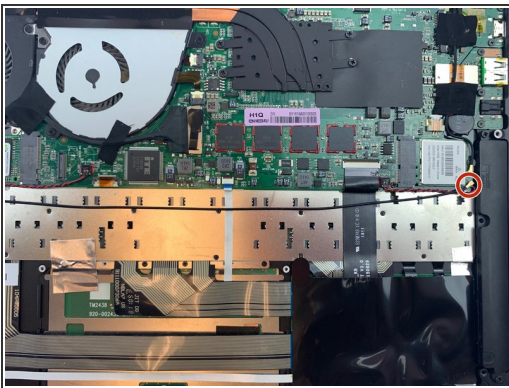
- Remove the battery carefully by removing the six screws using the T4 Torx screwdriver.

Step 3



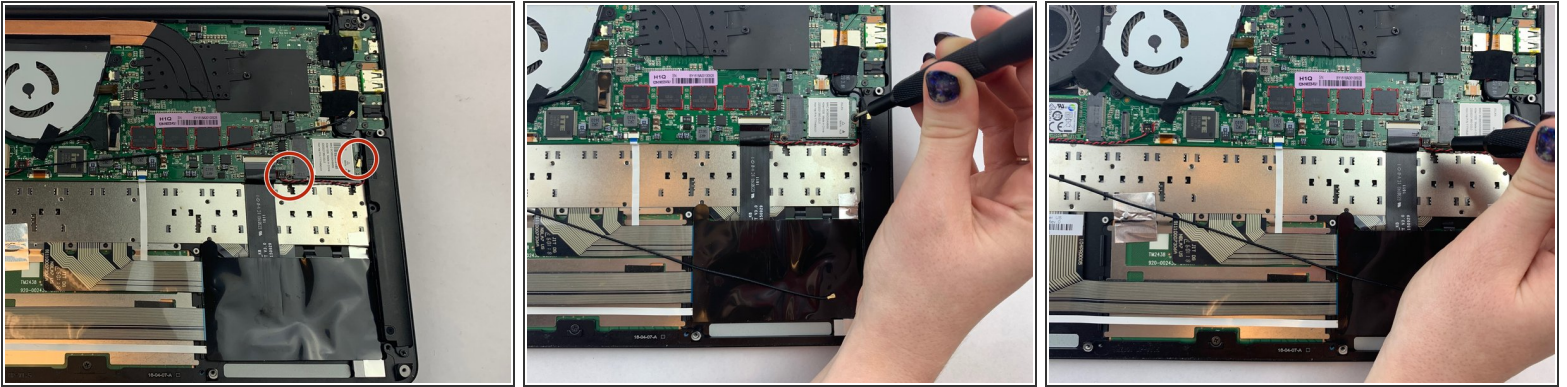
- Unplug and remove battery from the device.

Step 4 — Killer 1535 Wireless Card



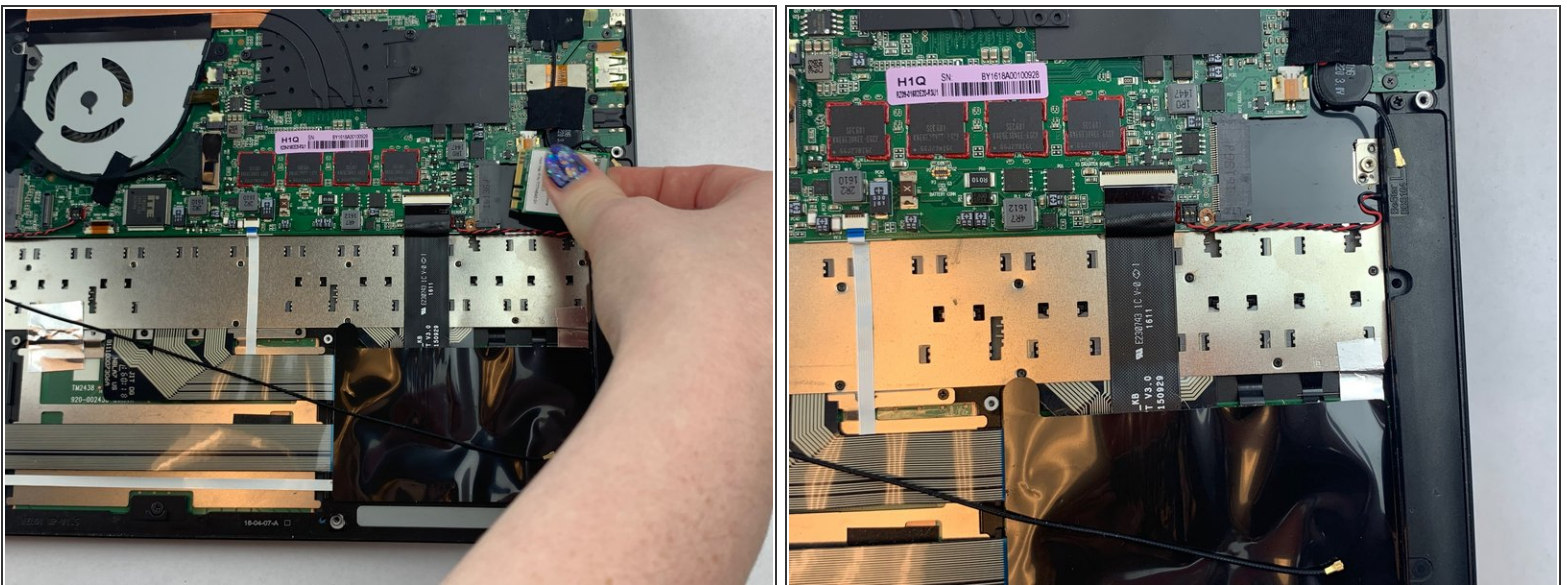
- Carefully remove the auxiliary and main wire from the Killer 1535 wireless card.

Step 5



- Use a Phillips #00 screwdriver to remove the two 2.61 mm screw holding the card in place.

Step 6



- Carefully remove the card.

To reassemble your device, follow these instructions in reverse order.