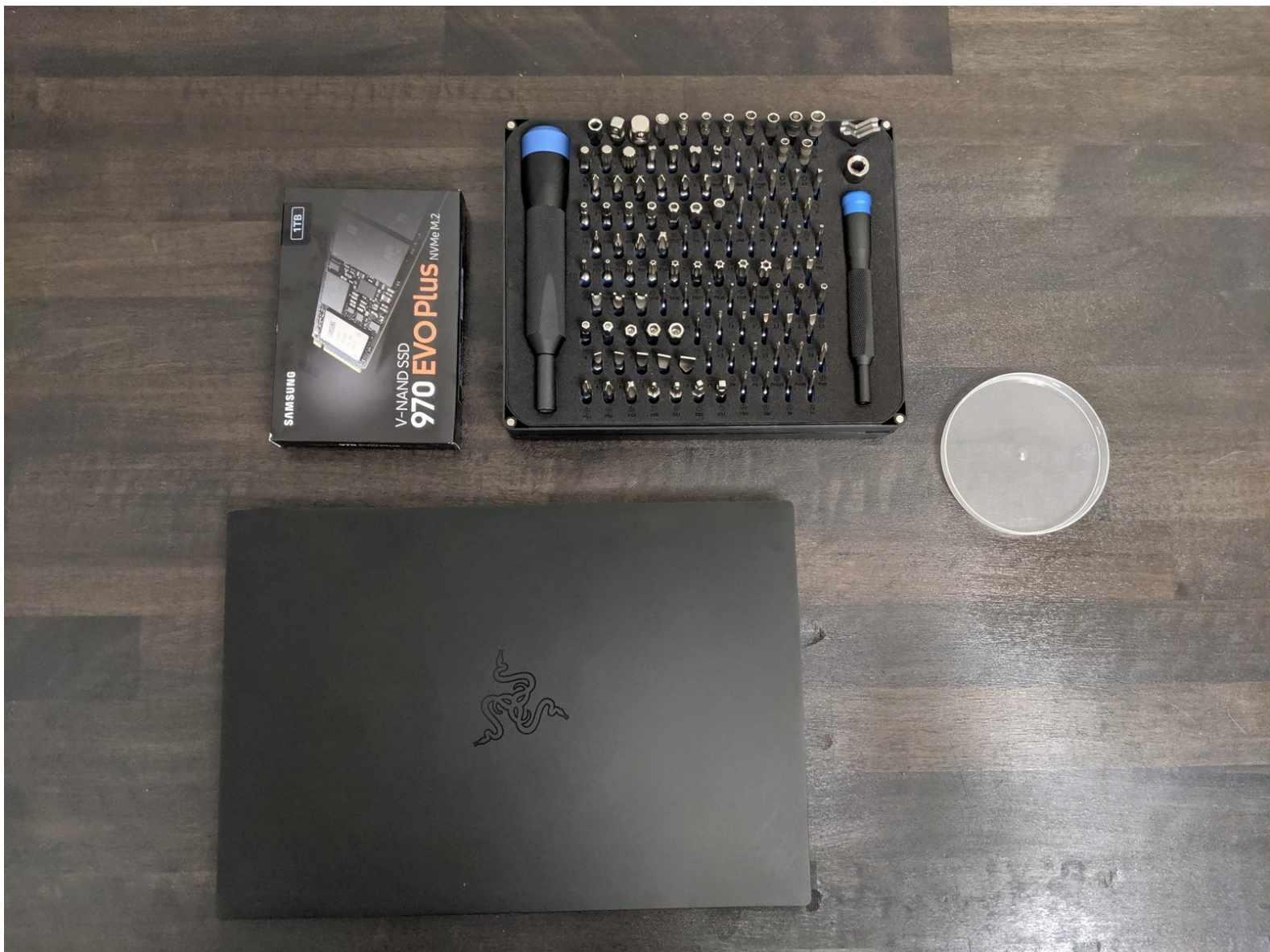




Razer Blade Stealth NVMe M.2 Upgrade

The stock storage of the Razer Blade Stealth is very small, let's upgrade it!

Written By: Brandon Martinez



INTRODUCTION

This is a very simple guide on upgrading/replacing your existing M.2 drive for the Razer Blade Stealth (2019). We will not be covering data transfer or transferring the operating system.



TOOLS:

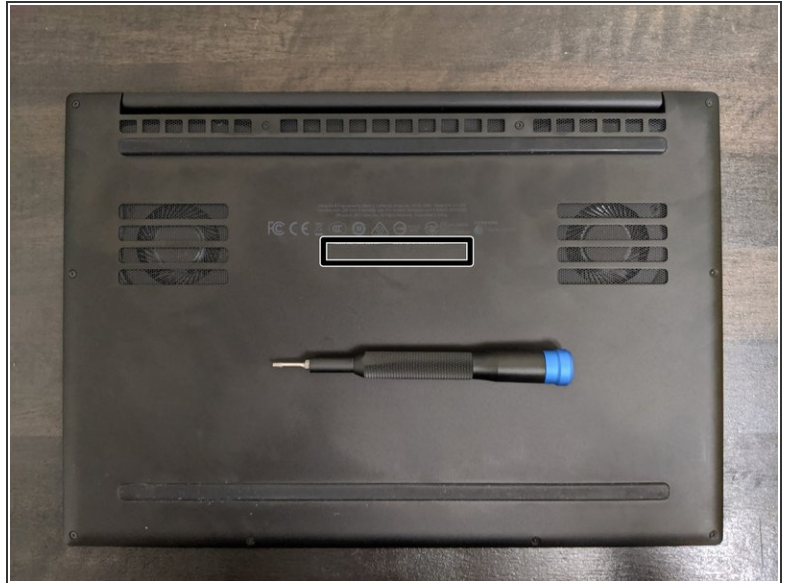
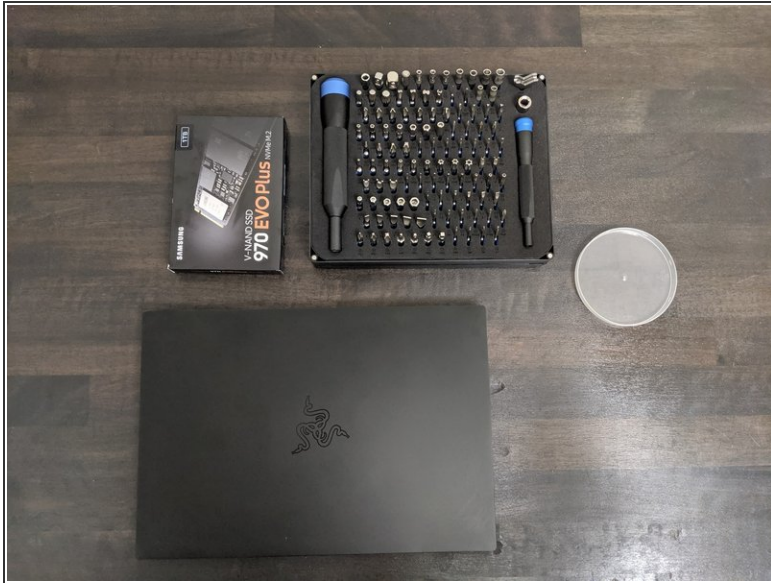
- [T5 Torx Screwdriver](#) (1)
- [1 x PH0 screw bit](#) (1)
- [Anti-Static Project Tray](#) (1)
- [Manta Driver Kit - 112 Bit Driver Kit](#) (1)



PARTS:

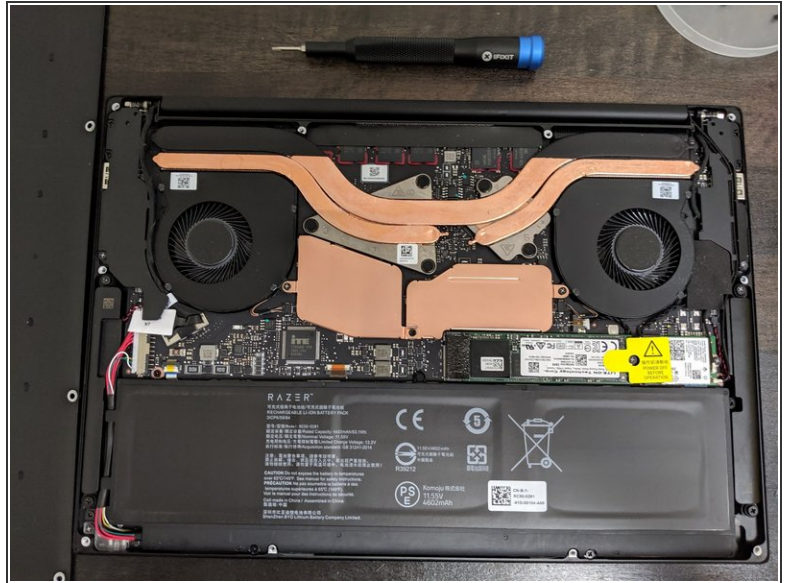
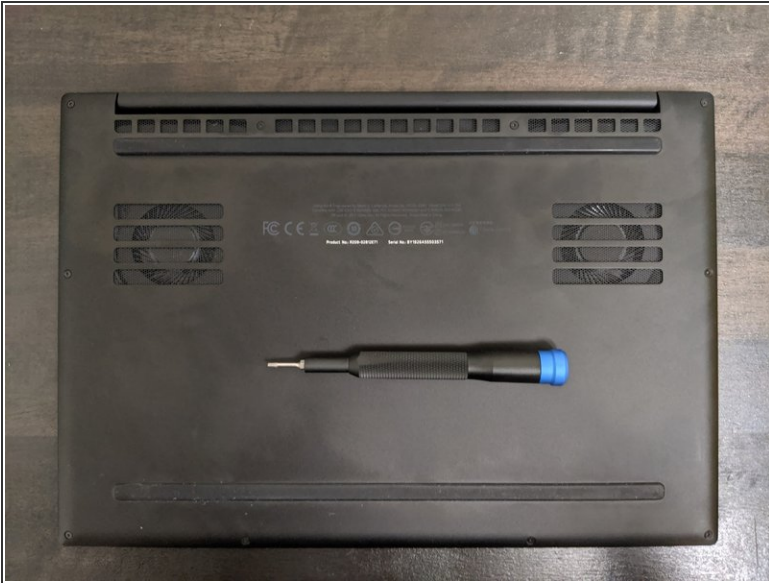
- [Samsung 970 EVO M.2 SSD](#) (1)

Step 1 — Preparing your work area



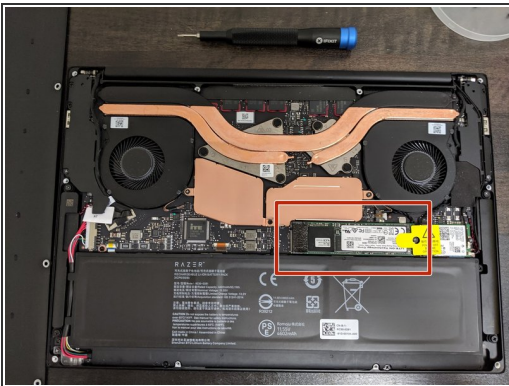
- NVMe M.2 SSD
- Manta Driver Kit from iFixIt (Recommended)
- Collection tray
- TURN OFF THE LAPTOP and make sure you have grounded yourself

Step 2 — Removing bottom plate screws



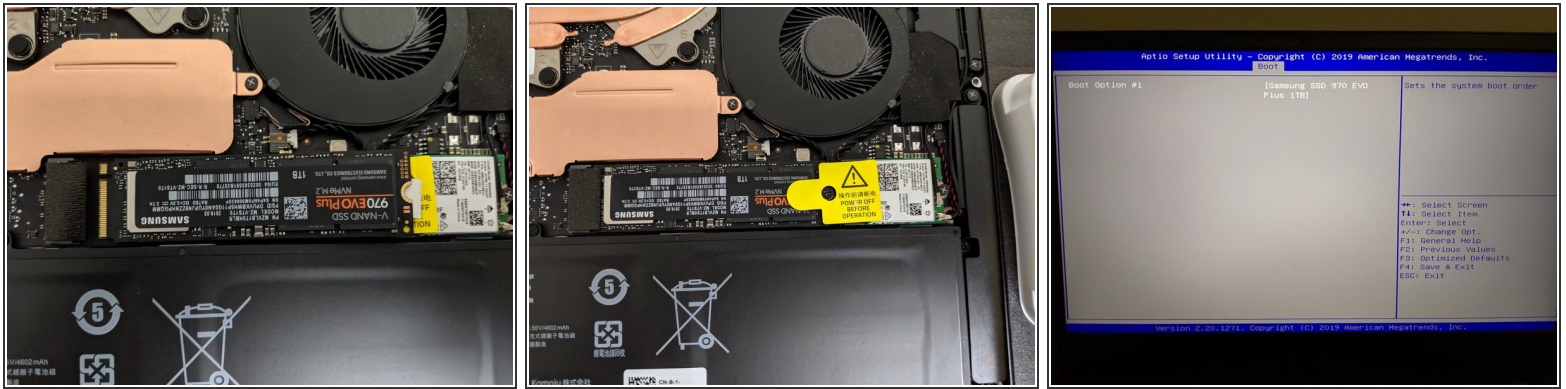
- There are only 10 screws, use the T5 bit to remove them
- After removing the screw lift the bottom plate from the hinge, it will free easily

Step 3 — Remove stock M.2 SSD



- Locate stock M.2 drive, read and take note of the yellow sticker
- Roll sticker back (left to right) and stick it to itself so it is out of our way
- Use PH0 driver to puncture sticker and remove SSD screw
- Verify one last time our new SSD has the same form factor as the stock one

Step 4



- Insert M.2 into the slot at roughly a 30 degree angle in the depicted orientation, do not use force
- Gently press SSD flat against the mother board with a single finger and thread the SSD screw
- Boot into BIOS and verify drive presence

This is a very simple process make sure to count your screws and set them properly.