



Razer DeathAdder Chroma Outer Casing Replacement

Remove the casing of the mouse to access the inner components.

Written By: Corrie Tung



INTRODUCTION

This is a prerequisite for all DeathAdder Chroma replacement guides.



TOOLS:

- [Phillips #0 Screwdriver](#) (1)
 - [Spudger](#) (1)
-

Step 1 — Outer Casing



- ❗ Opening the mouse casing will void any warranty that exists for the mouse.
- Turn the mouse over so the bottom is facing up.

Step 2



- Use the blunt end of the spudger to pry the adhesive rubber pads from the top left and right edges.

Step 3



- Use a Phillips #0 screwdriver to remove two 6.7 mm screws.

Step 4



- Use your fingers to identify the location of the screw under the bottom label.

Step 5



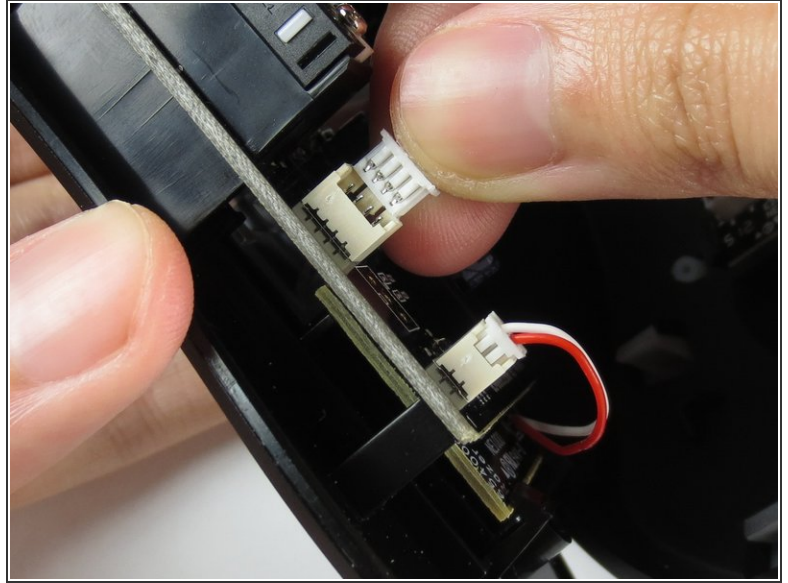
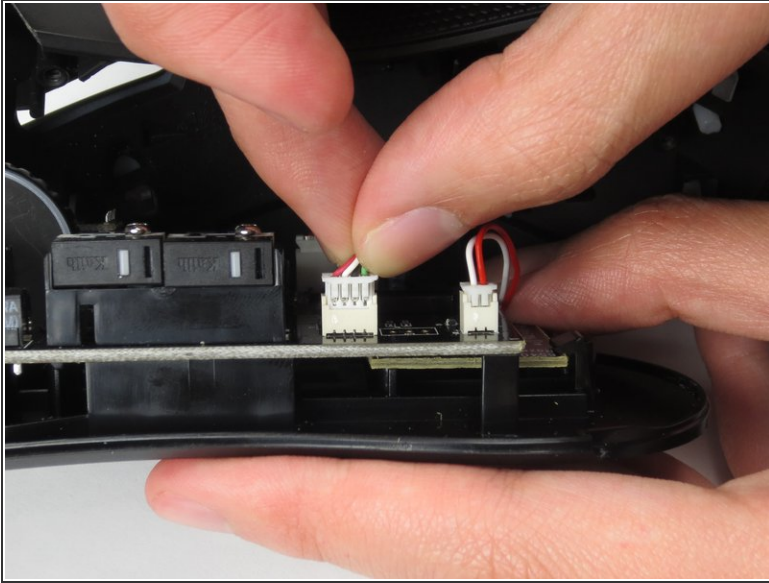
- Use a Phillips #0 screwdriver to remove one 6.7 mm screw.
- ⓘ Clear the label away from around the screw for easier removal.

Step 6



- Turn the mouse over so the bottom is facing down.
 - Separate the top casing from the bottom base by pulling the top casing upwards.
- ⚠ Separating the casing too quickly could damage the ribbon connector between the motherboard and the LED lights.

Step 7



- Disconnect the ribbon connector between the motherboard and the LED lights by pulling upward.

⚠ Pulling too hard could damage the wire connections.

To reassemble your device, follow these instructions in reverse order.