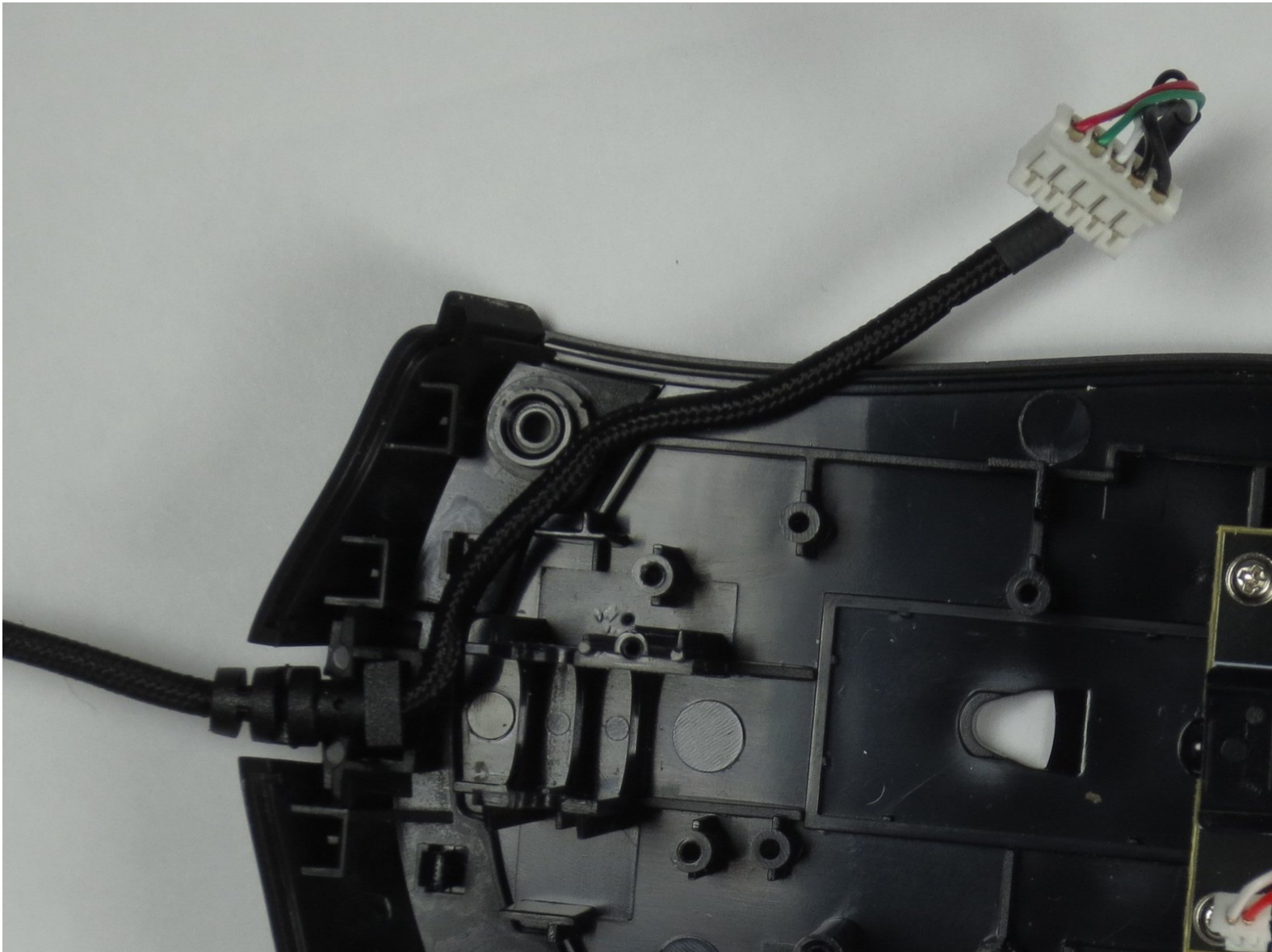




Razer DeathAdder Chroma USB Cable Replacement

This guide will inform you how to remove and replace the USB cable for the DeathAdder Chroma.

Written By: Henry Shi



INTRODUCTION

The Razer DeathAdder Chroma may experience critical issues related to the device not being registered by the computer via a fault in the USB cable.

TOOLS:

- [Phillips #0 Screwdriver](#) (1)
 - [Phillips #000 Screwdriver](#) (1)
 - [Spudger](#) (1)
-

Step 1 — Outer Casing



- ❗ Opening the mouse casing will void any warranty that exists for the mouse.
- Turn the mouse over so the bottom is facing up.

Step 2



- Use the blunt end of the spudger to pry the adhesive rubber pads from the top left and right edges.

Step 3



- Use a Phillips #0 screwdriver to remove two 6.7 mm screws.

Step 4



- Use your fingers to identify the location of the screw under the bottom label.

Step 5



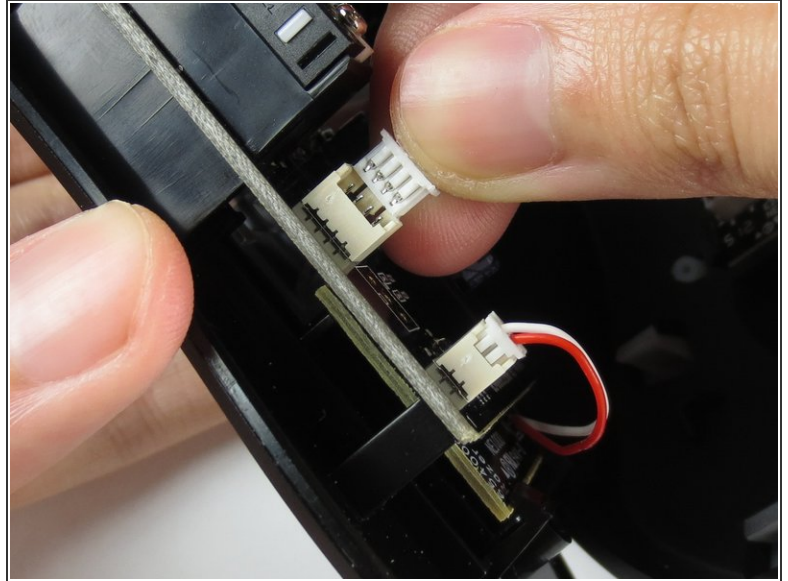
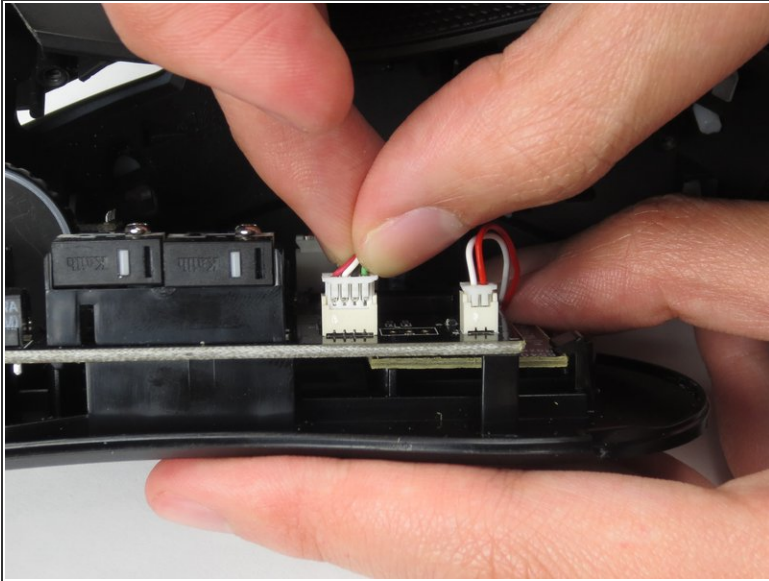
- Use a Phillips #0 screwdriver to remove one 6.7 mm screw.
- ⓘ Clear the label away from around the screw for easier removal.

Step 6



- Turn the mouse over so the bottom is facing down.
- Separate the top casing from the bottom base by pulling the top casing upwards.
- ⚠ Separating the casing too quickly could damage the ribbon connector between the motherboard and the LED lights.

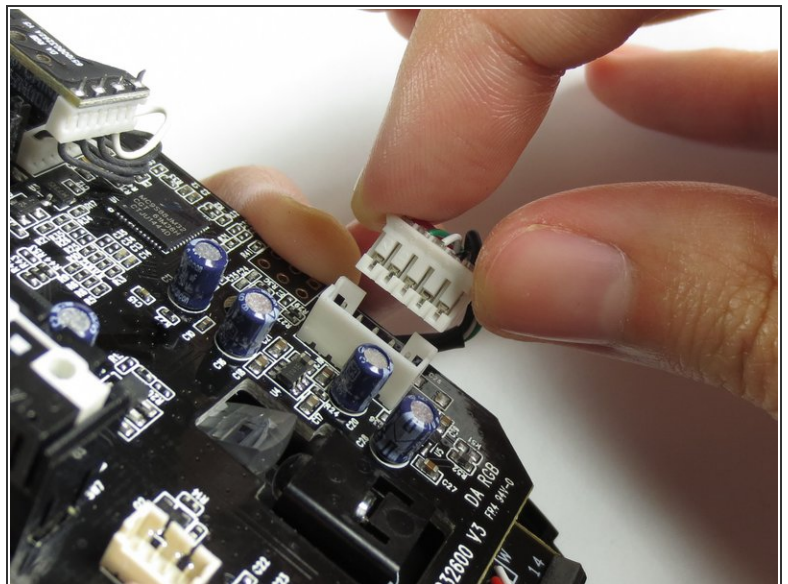
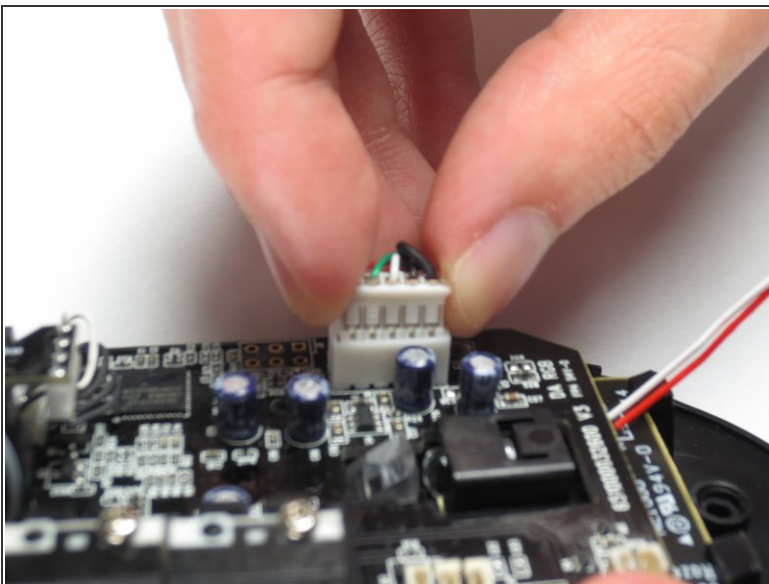
Step 7



- Disconnect the ribbon connector between the motherboard and the LED lights by pulling upward.

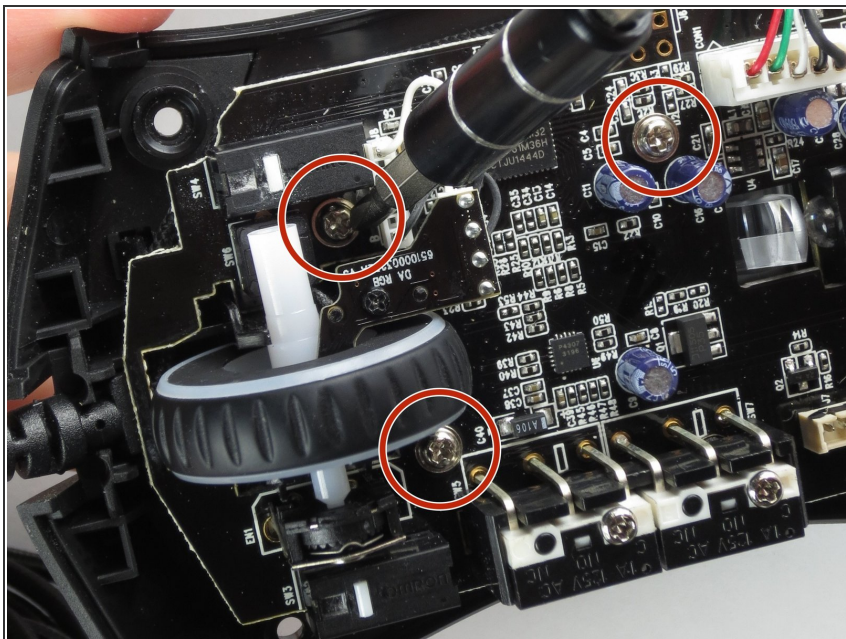
⚠ Pulling too hard could damage the wire connections.

Step 8 — Motherboard



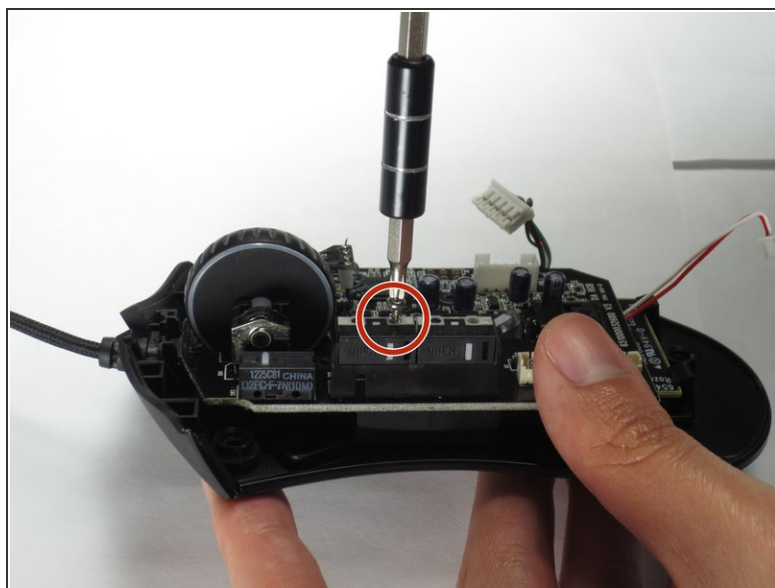
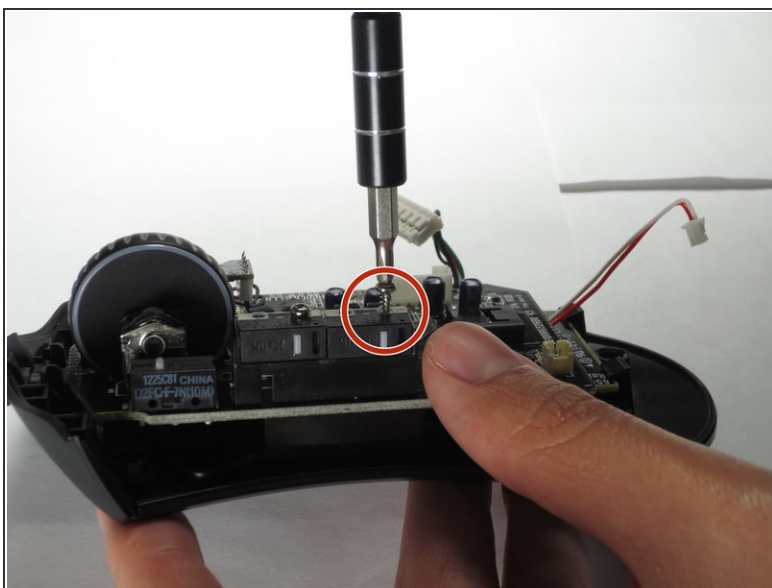
- Disconnect the ribbon connector between the motherboard and the USB cable by pulling upward.

Step 9



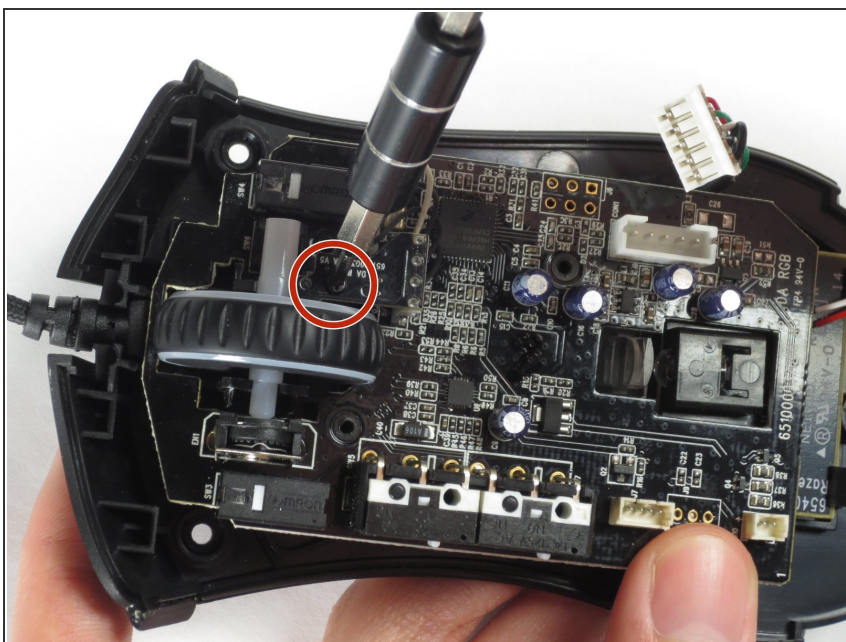
- Use a Phillips #0 screwdriver to remove three 5.5 mm screws.

Step 10



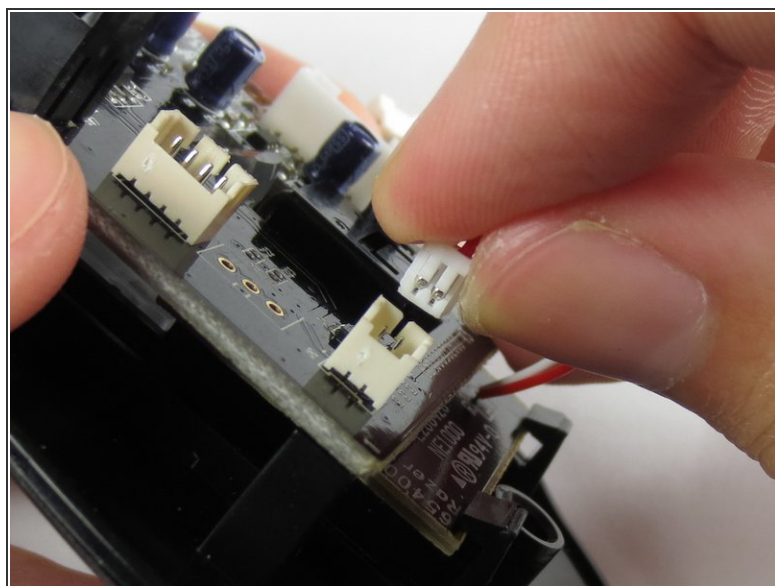
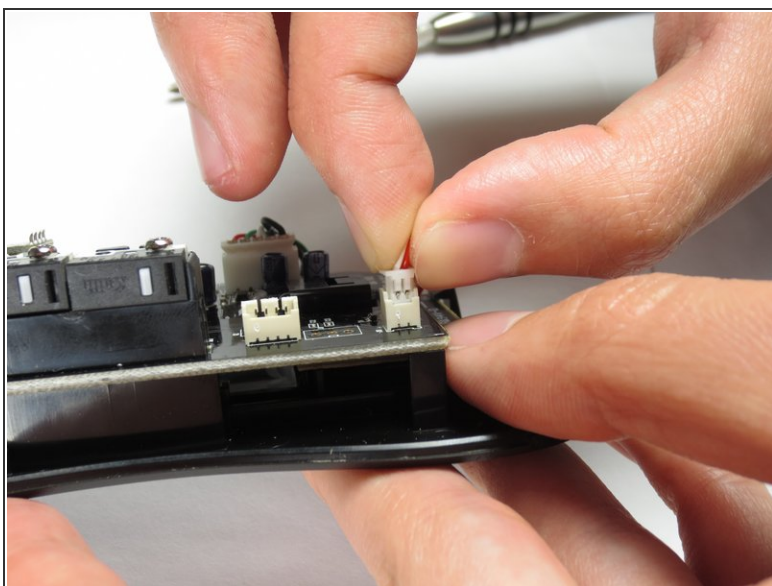
- Use a Phillips #0 screwdriver to remove two 11.5 mm screws on the side buttons.

Step 11



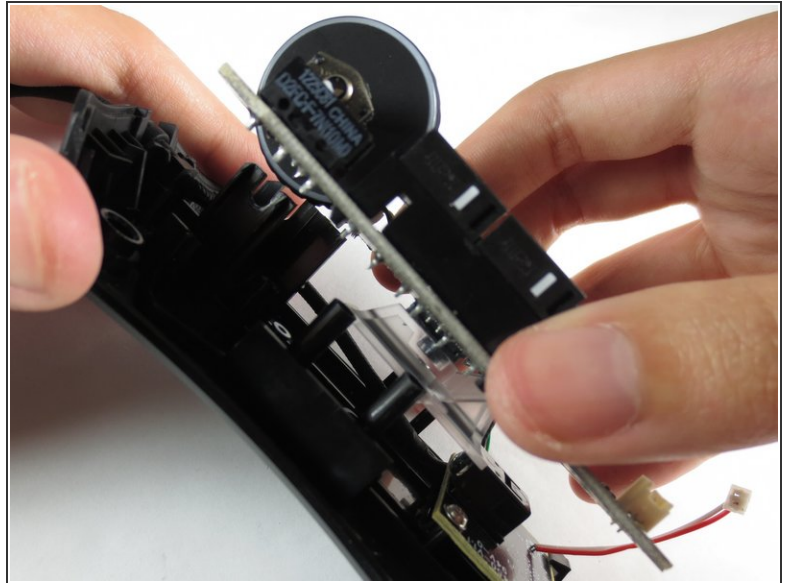
- Use a Phillips #000 screwdriver to remove one 5.0 mm screw.

Step 12



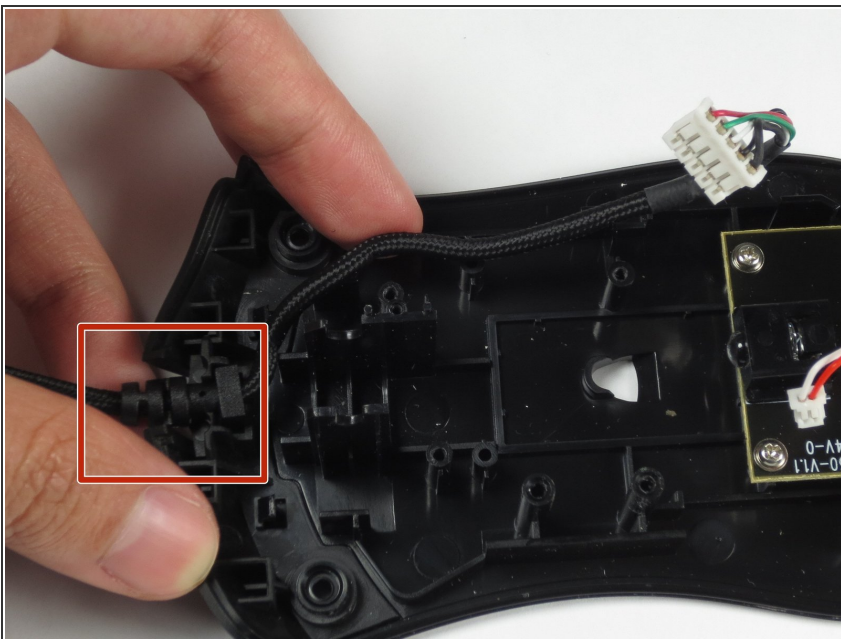
- Disconnect the ribbon connector between the motherboard and the optical sensor.

Step 13



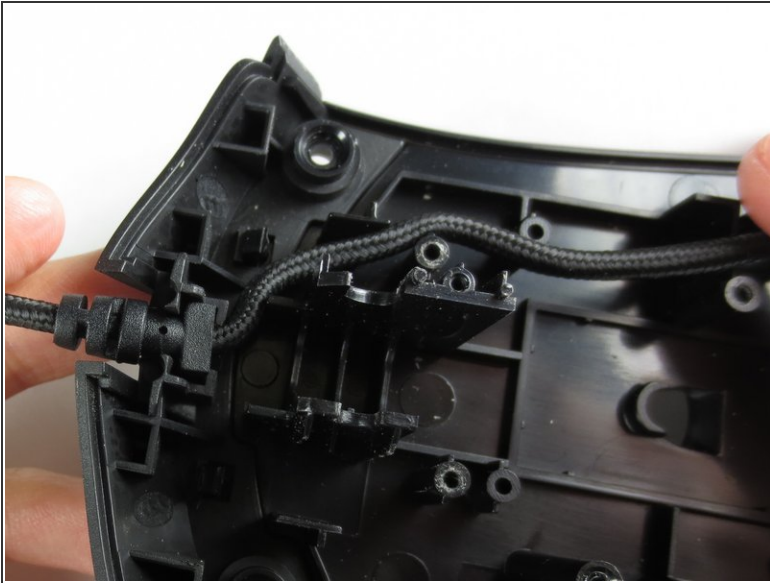
- Remove the motherboard by grasping the sides and gently pulling upward.

Step 14 — USB Cable



- Locate the USB cable.

Step 15



- Remove the USB cable by pulling it up and out.

To reassemble your device, follow these instructions in reverse order.