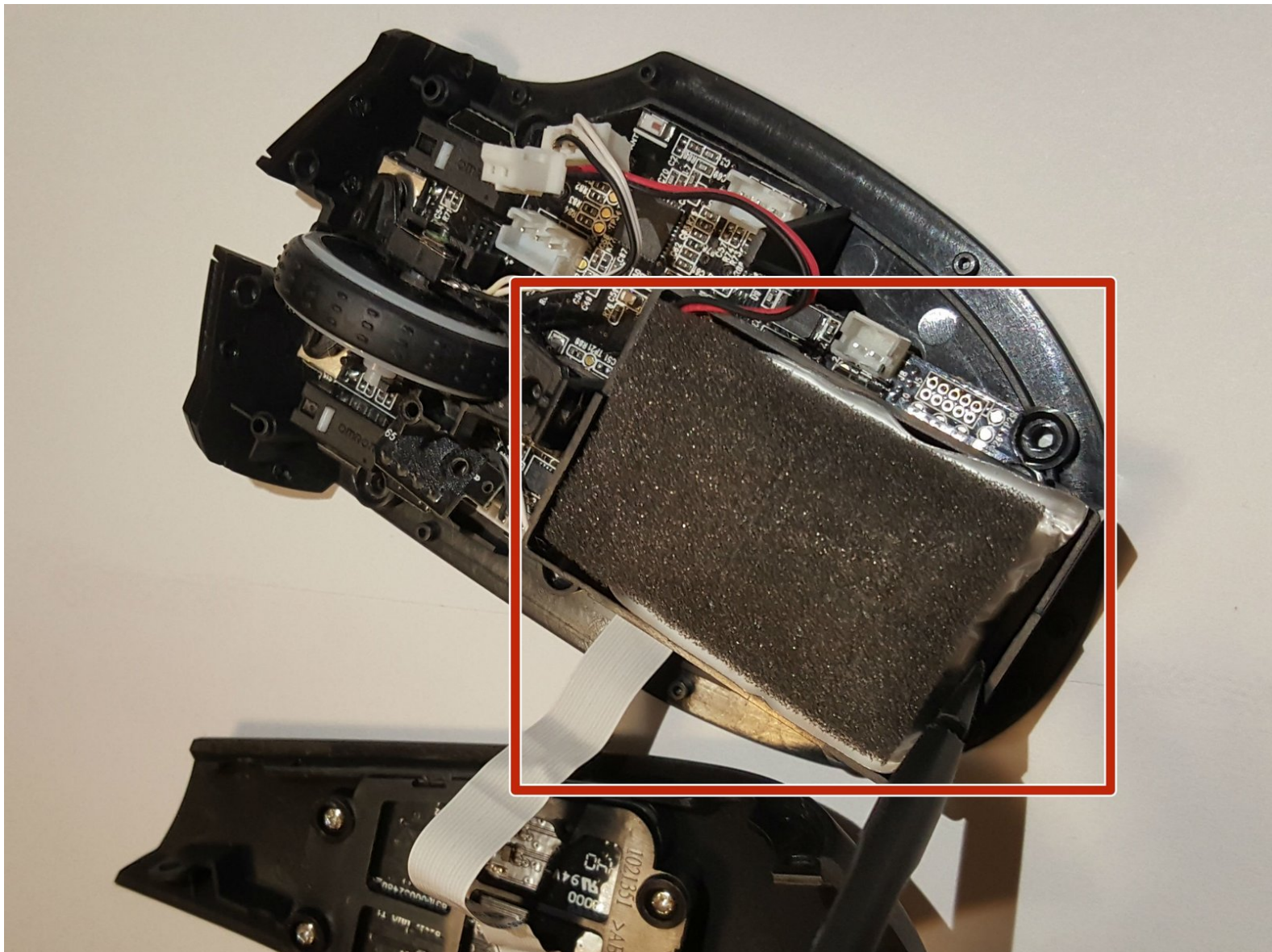




# Razer Naga Epic Chroma Battery Replacement

This guide will show how to replace the battery in the Razer Naga Epic Chroma.

Written By: Jordan Morgan





## TOOLS:

- [Phillips #00 Screwdriver](#) (1)
- [Spudger](#) (1)



## PARTS:

- [3.7V 1300mAh battery](#) (1)

## Step 1 — Razer Naga Epic Chroma Disassembly



- Remove the teflon tape from the bottom of the mouse with a spudger.

## Step 2



- Remove the four screws with the Phillips head #00 screwdriver.

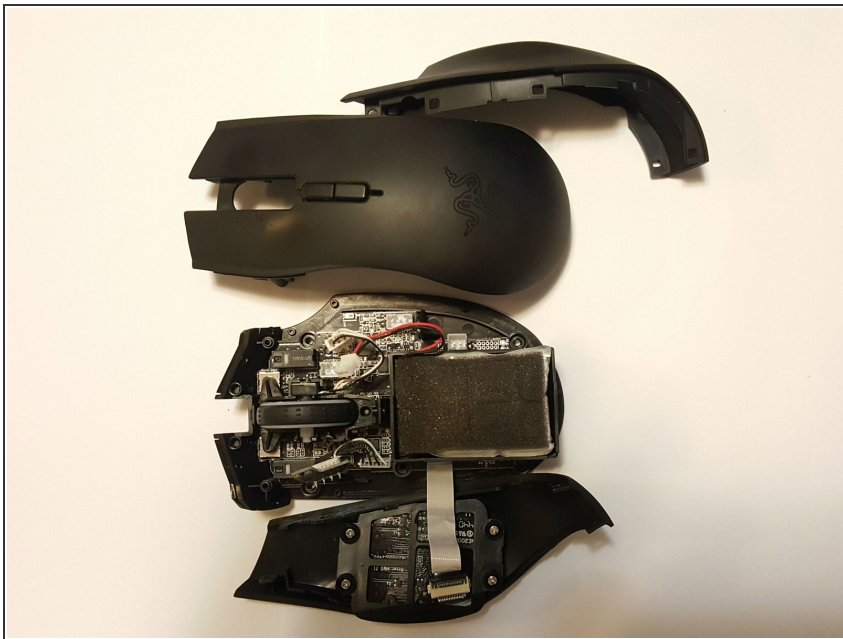


### Step 3



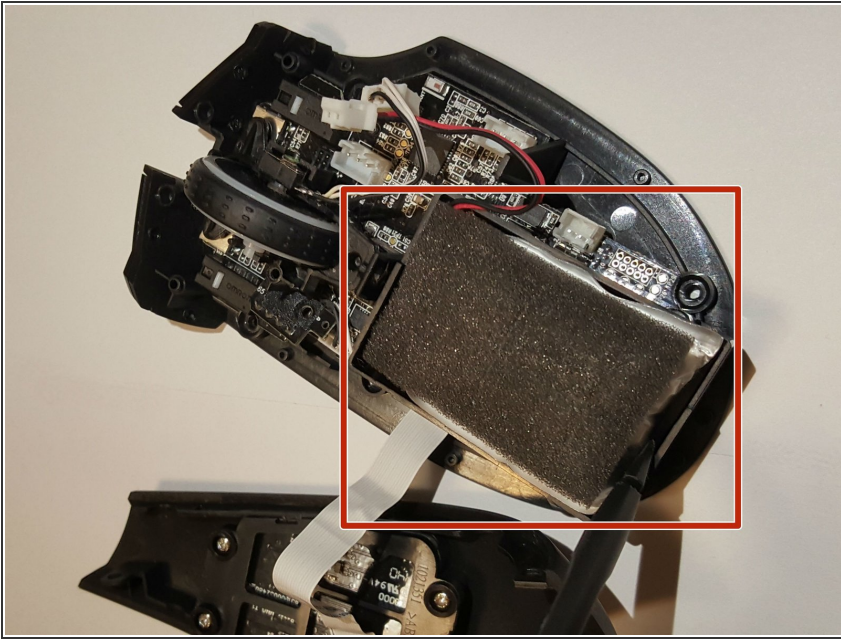
- Gently pull on the top plastic plate of the device and carefully unplug the white cord from the circuit board.

### Step 4



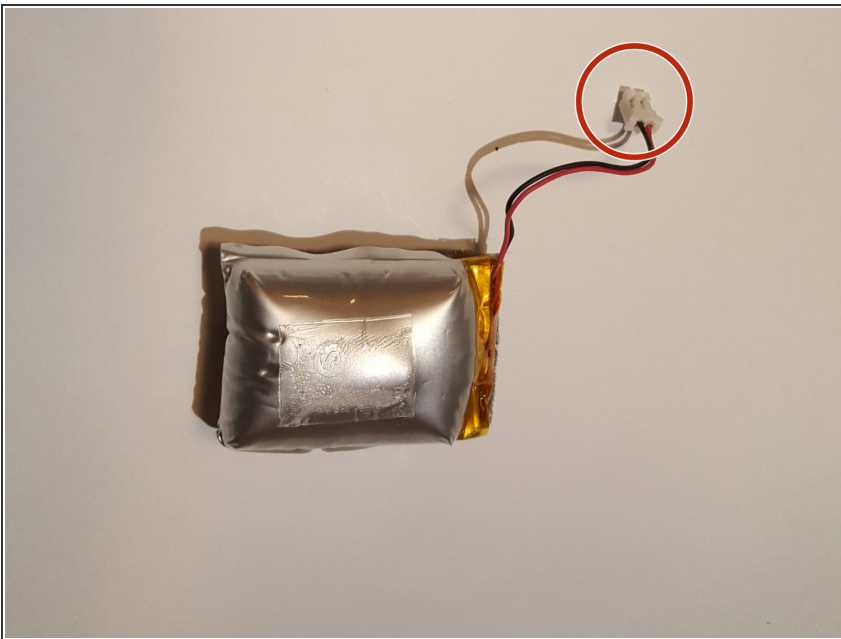
- Gently pull up on the two side plastic plates.

## Step 5 — Battery



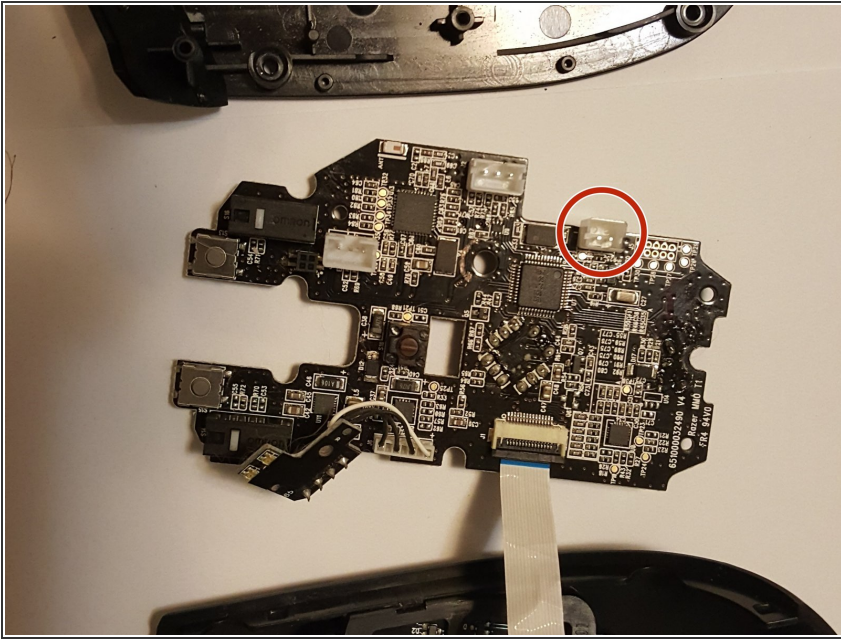
- Take a nylon spudger and gently pry the battery pack from the device.

## Step 6



- Unplug the power cord from the circuit board.

## Step 7



- Plug the cord of the new battery into the socket on the bottom right of the circuit board.

To reassemble your device, follow these instructions in reverse order.