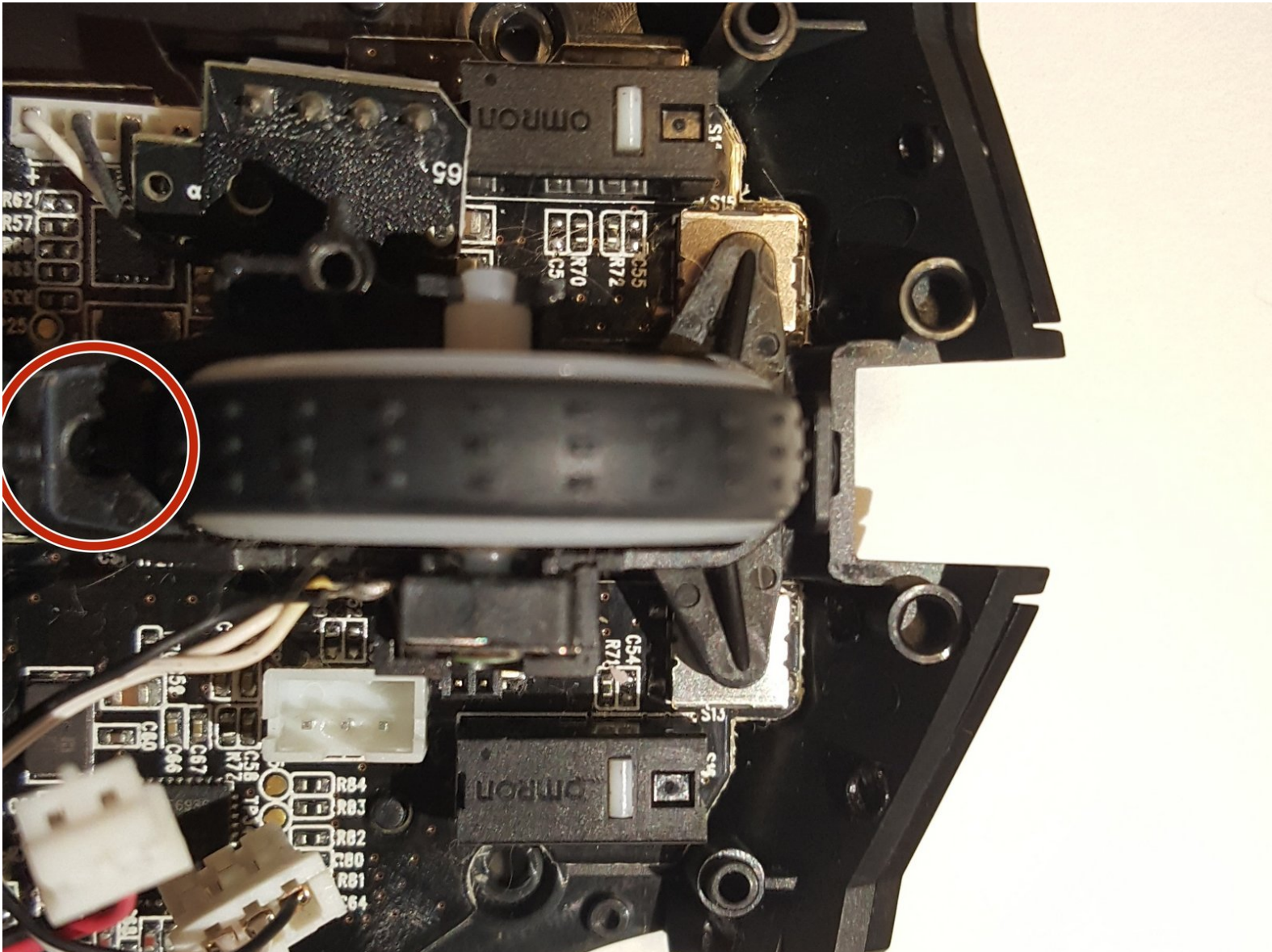




# Razer Naga Epic Chroma Scroll Wheel Replacement

This guide will show how to replace the scroll wheel of the mouse.

Written By: Jordan Morgan





## TOOLS:

- [Phillips #00 Screwdriver](#) (1)
  - [Spudger](#) (1)
-

## Step 1 — Razer Naga Epic Chroma Disassembly



- Remove the teflon tape from the bottom of the mouse with a spudger.

## Step 2



- Remove the four screws with the Phillips head #00 screwdriver.



### Step 3



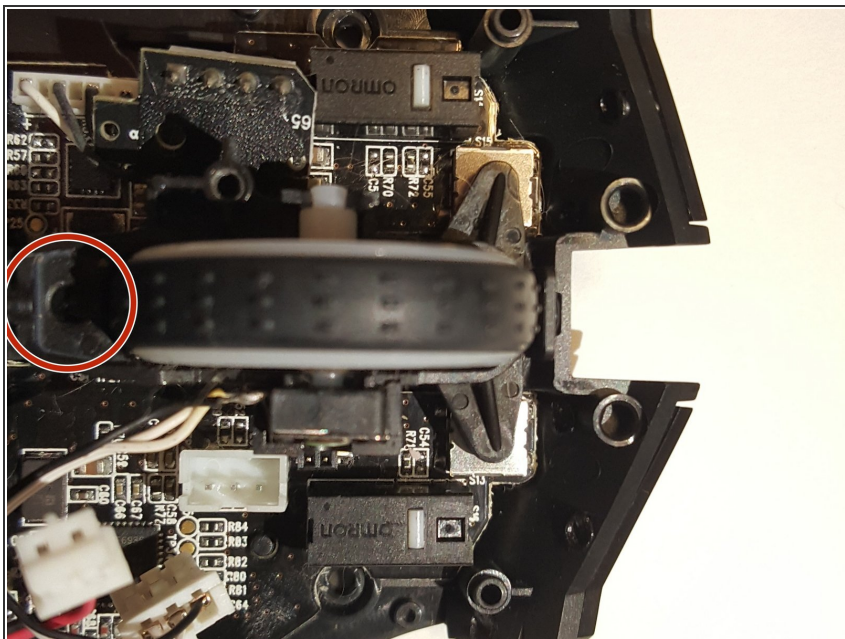
- Gently pull on the top plastic plate of the device and carefully unplug the white cord from the circuit board.

### Step 4



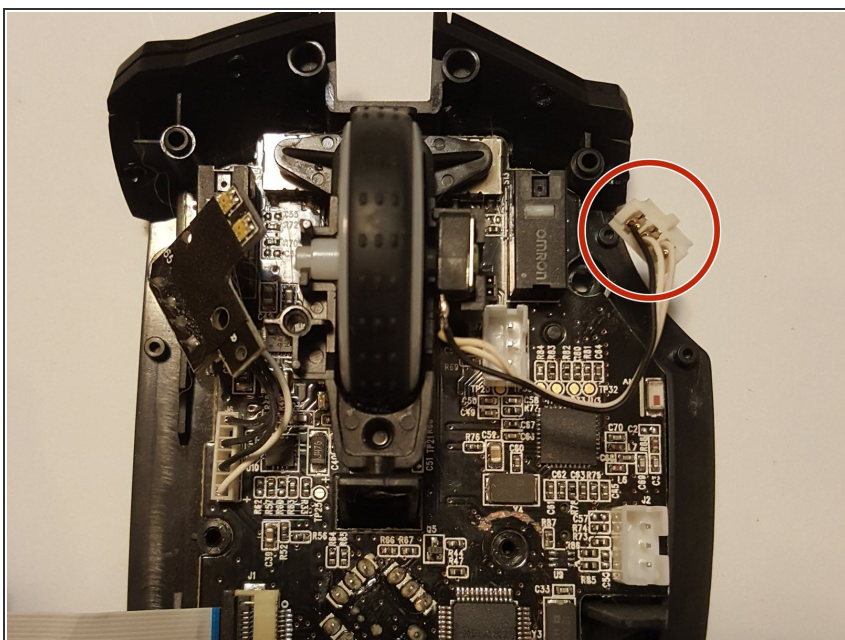
- Gently pull up on the two side plastic plates.

## Step 5 — Scroll Wheel



- Remove the screw holding the scroll wheel in place.

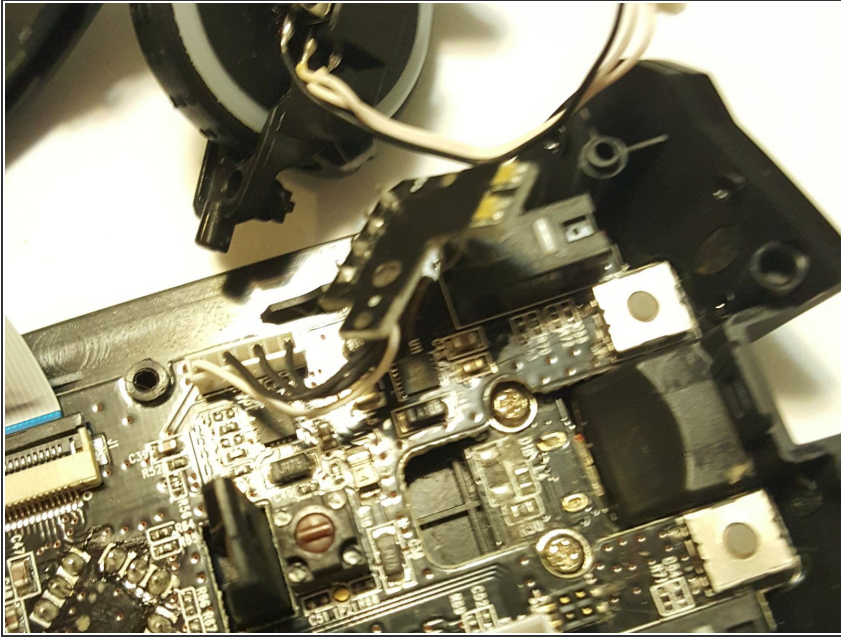
## Step 6



- Unplug the cords connecting the scroll wheel with the circuit board.

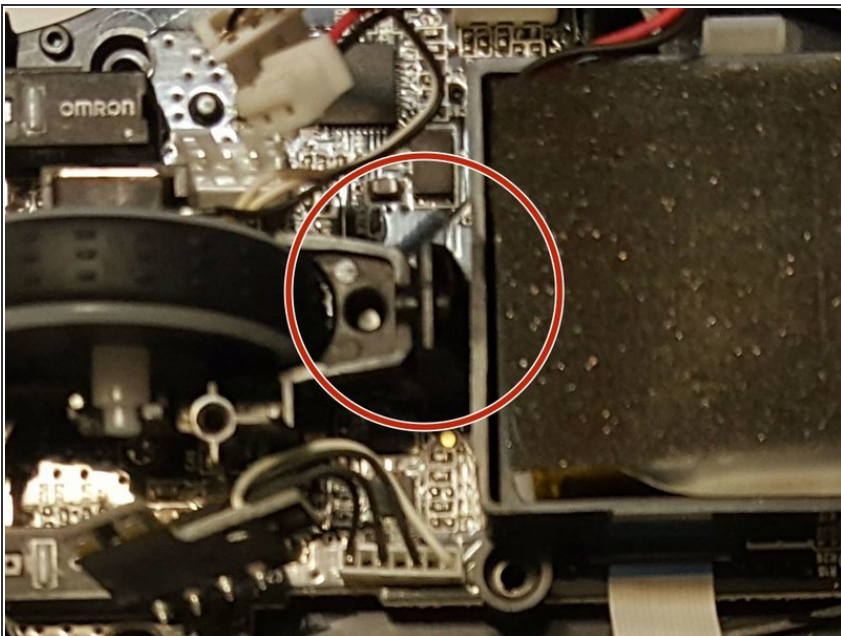


## Step 7



- Use your fingers to pull back on the plastic between the scroll wheel and the battery mount.
- Keep pulling this tab gently towards the battery mount until the scroll wheel has been removed.

## Step 8



- Place the new scroll wheel in the mount and relieve pressure on the plastic tab between the battery mount and scroll mount.

To reassemble your device, follow these instructions in reverse order.