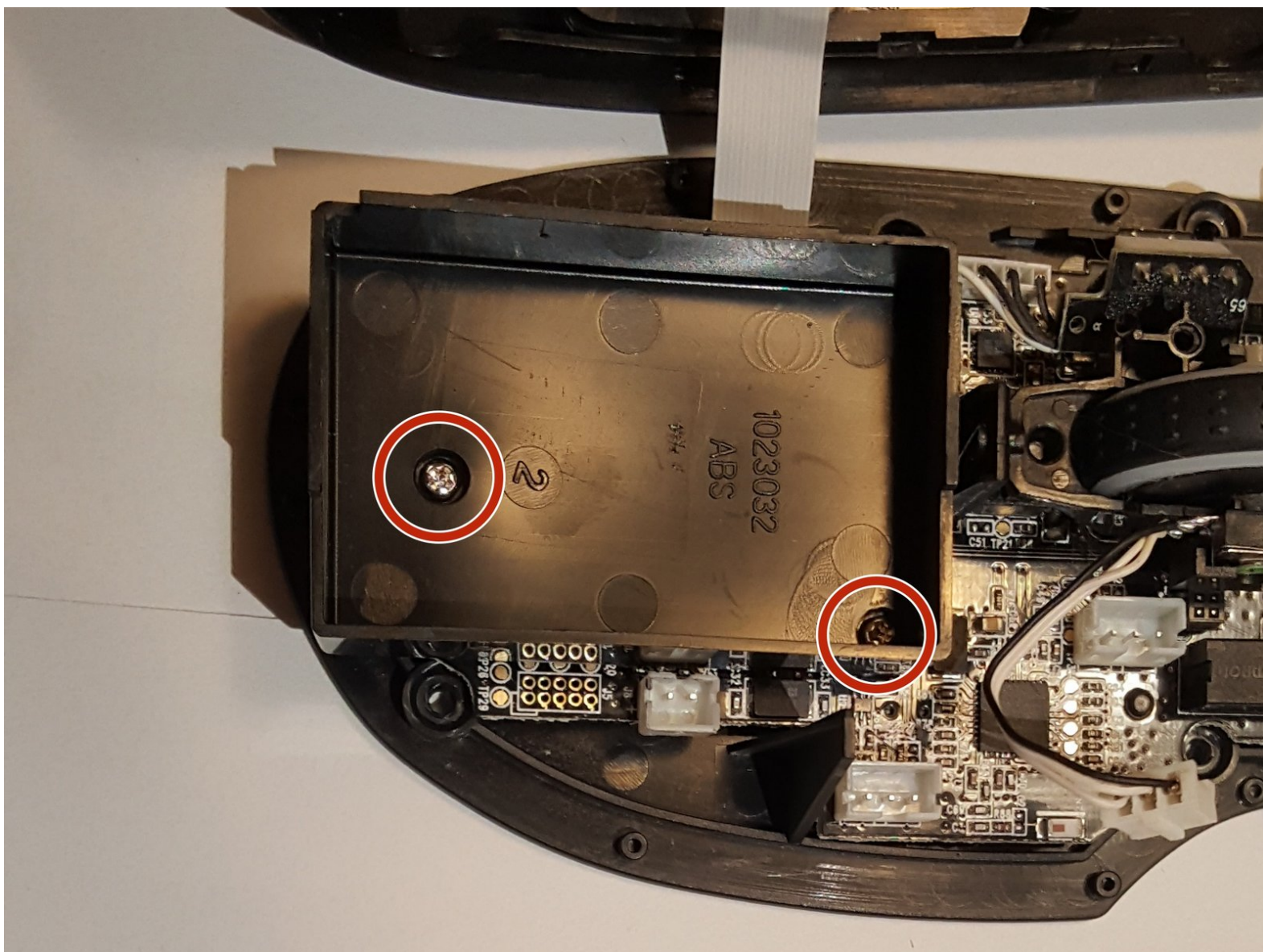




Razer Naga Epic Chroma Side Button Connection Strip Replacement

This guide will show how to replace the connection cable between the side buttons and the circuit board.

Written By: Jordan Morgan





TOOLS:

- [Spudger](#) (1)
 - [Phillips #00 Screwdriver](#) (1)
-

Step 1 — Razer Naga Epic Chroma Disassembly



- Remove the teflon tape from the bottom of the mouse with a spudger.

Step 2



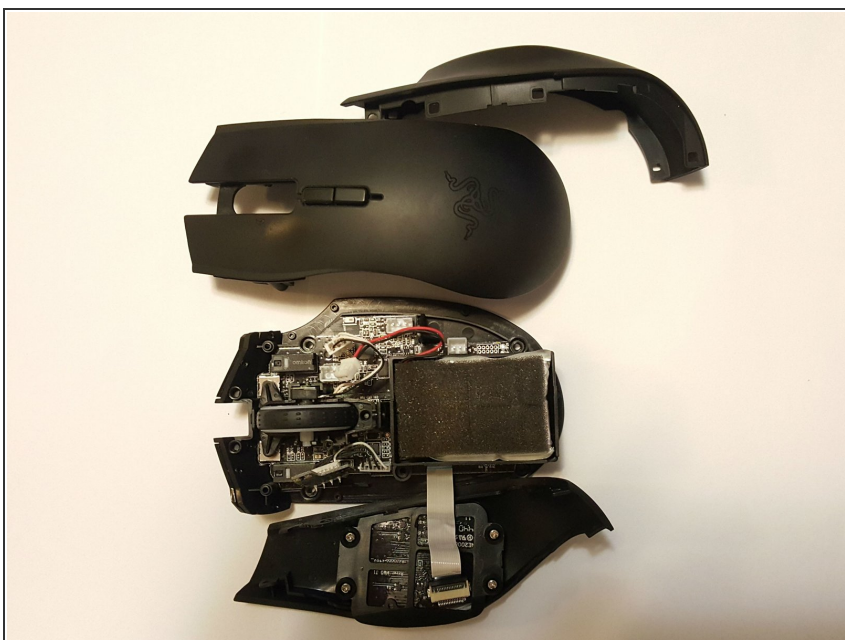
- Remove the four screws with the Phillips head #00 screwdriver.

Step 3



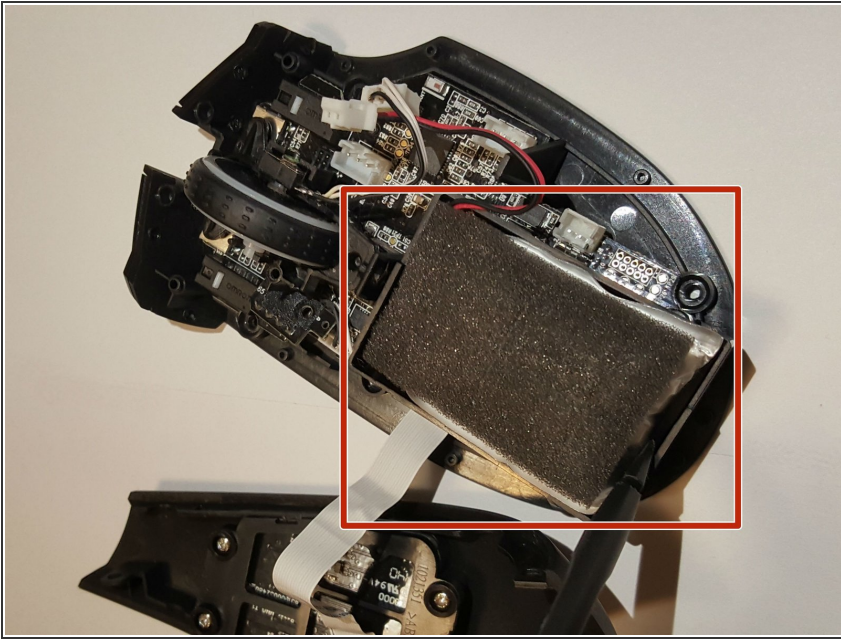
- Gently pull on the top plastic plate of the device and carefully unplug the white cord from the circuit board.

Step 4



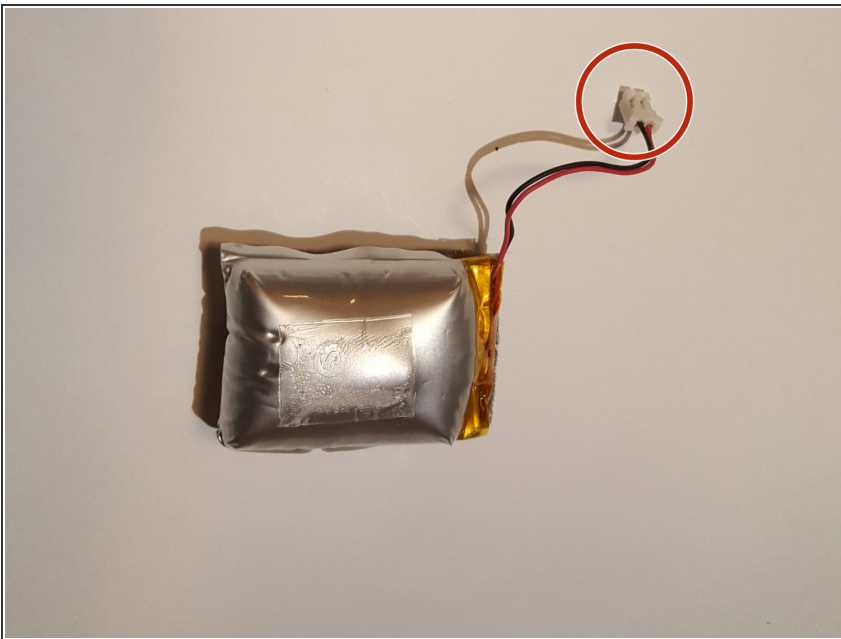
- Gently pull up on the two side plastic plates.

Step 5 — Battery



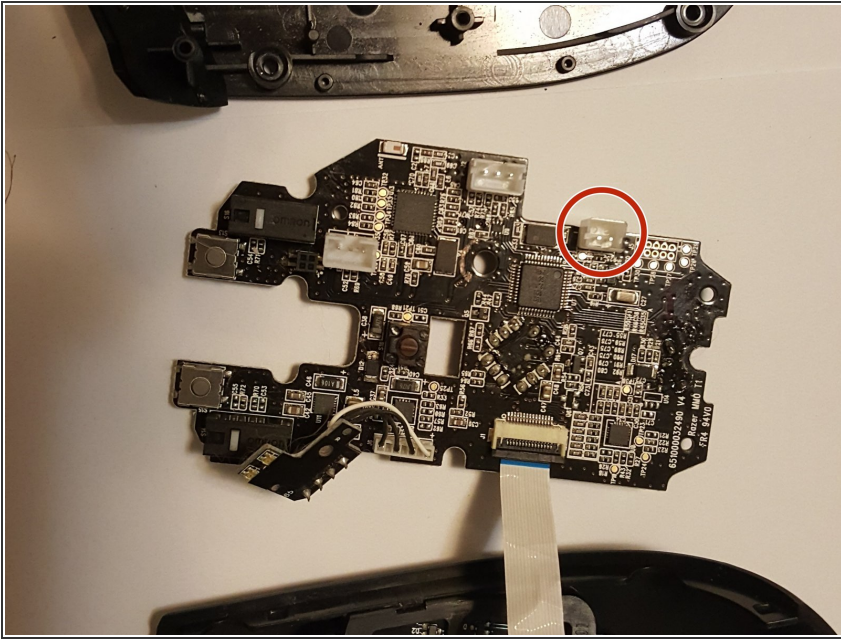
- Take a nylon spudger and gently pry the battery pack from the device.

Step 6



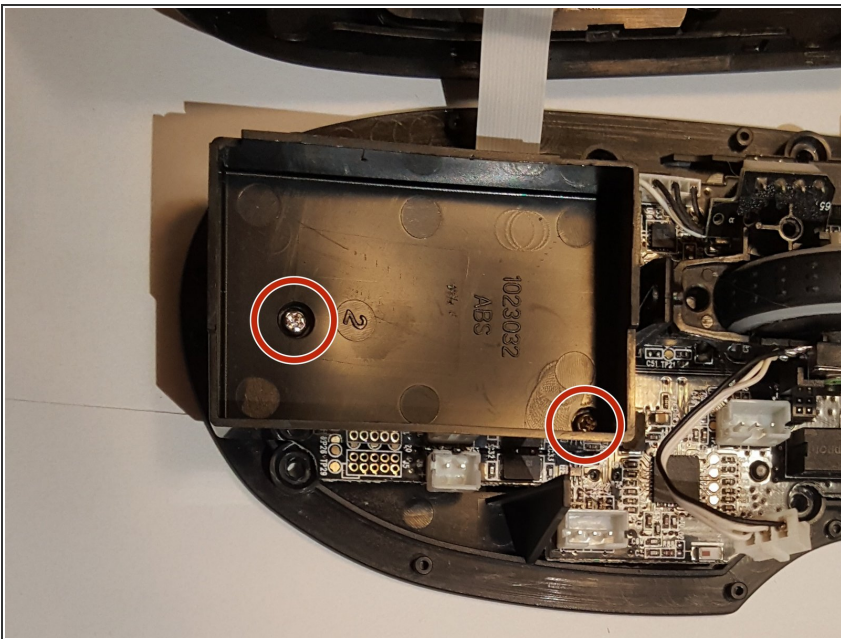
- Unplug the power cord from the circuit board.

Step 7



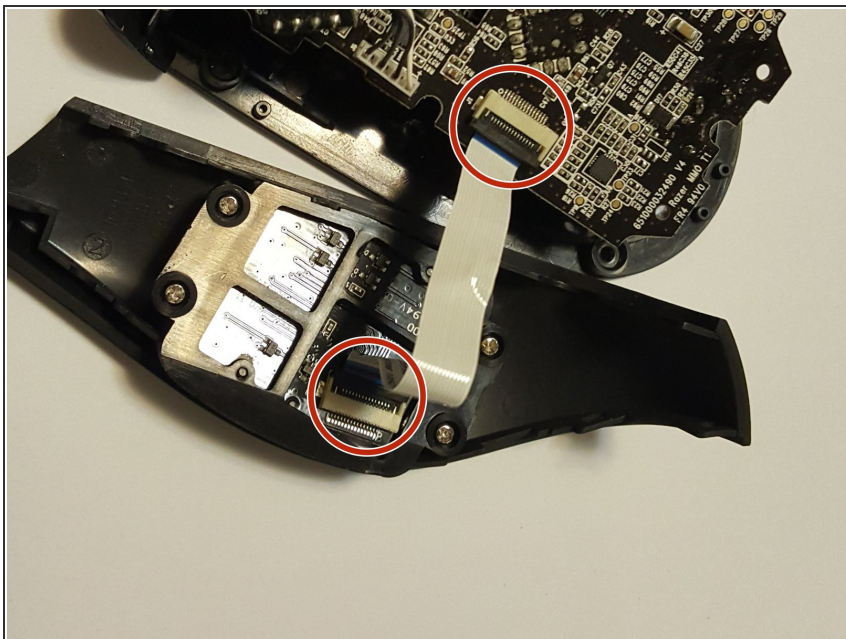
- Plug the cord of the new battery into the socket on the bottom right of the circuit board.

Step 8 — Side Button Connection Strip



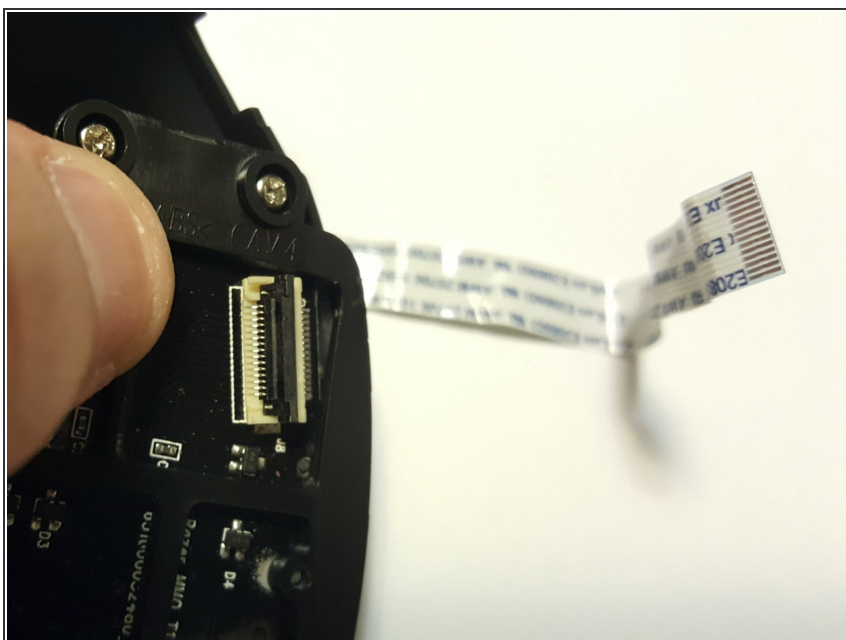
- Under the battery, remove the two screws holding the battery mount in place.
- Remove the battery mount.

Step 9



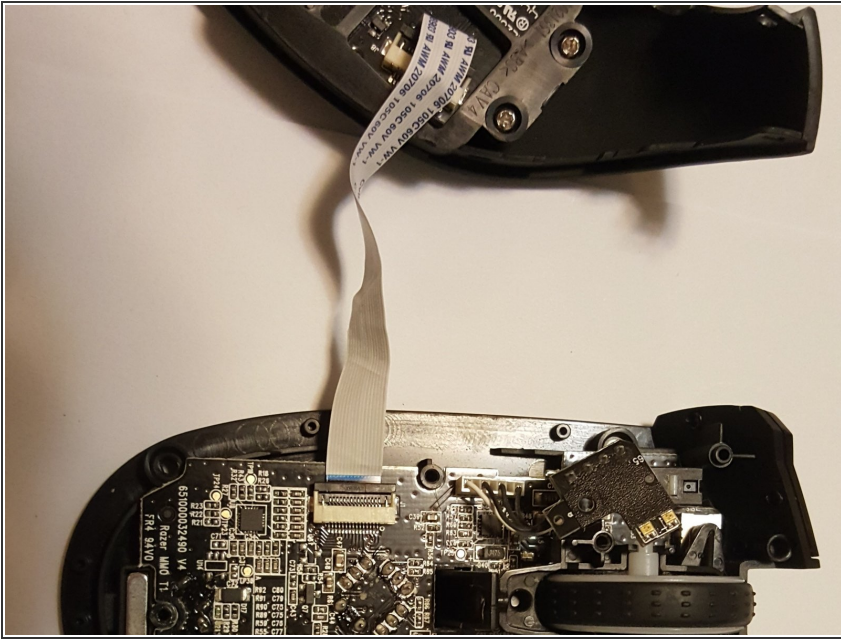
- Flip open the black pieces on either end of the white connection strip holding the side buttons onto the circuit board.

Step 10



- Gently pull the white connection strip out of both connection ports.

Step 11



- Insert the blue stripes of the new white connection strip into both white connection points.
- One connection point is on the plastic plate that has the buttons. The second connection point is where the battery mount was.

To reassemble your device, follow these instructions in reverse order.