



Razer Naga Epic Chroma Top Casing Replacement

This guide will show how to replace the top plastic casing. This guide was made because the plastic pieces in the case are the most likely to break.

Written By: Jordan Morgan





TOOLS:

- [Phillips #00 Screwdriver](#) (1)
- [Spudger](#) (1)

Step 1 — Razer Naga Epic Chroma Disassembly



- Remove the teflon tape from the bottom of the mouse with a spudger.

Step 2



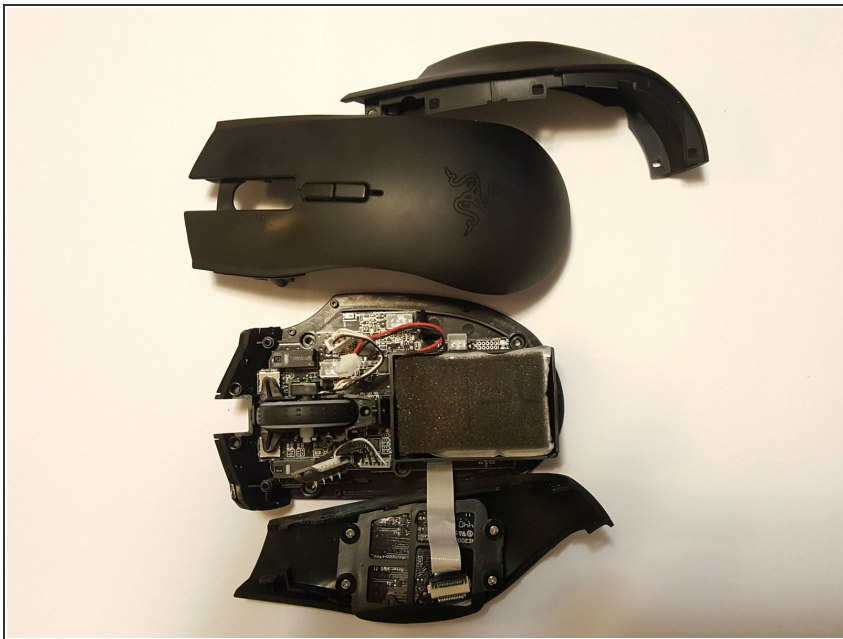
- Remove the four screws with the Phillips head #00 screwdriver.

Step 3



- Gently pull on the top plastic plate of the device and carefully unplug the white cord from the circuit board.

Step 4



- Gently pull up on the two side plastic plates.

Step 5 — Top Plastic Casing



- Plug the new top casing's cable back into the socket on the right side of the circuit board near the middle.

Step 6



- Reassemble the device.
- Test device to make sure the connections function correctly.

To reassemble your device, follow these instructions in reverse order.